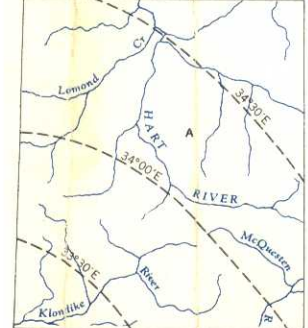


DECLINATION OF THE COMPASS NEEDLE 1954

Produced by the Surveys and Mapping Branch,
Department of Mines and Technical Surveys, 1954,
from air photographs taken in 1951 and 1952.
Printed by the Army Survey Establishment, R.C.E.,
Department of National Defence, 1955.

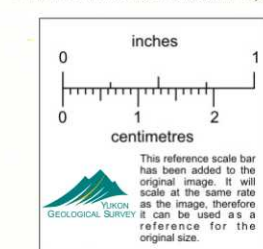
Universal Transverse Mercator Projection

Contour interval 500 Feet
All Elevations in Feet above Mean Sea Level
North American Datum 1927.



REFERENCE

- Wagon or Winter Road
- Trail or Portage
- Village or Settlement
- Post Office
- Building or Cabin
- Horizontal Control Point
- Astronomical Position
- Spot Elevation, (in feet) 4275



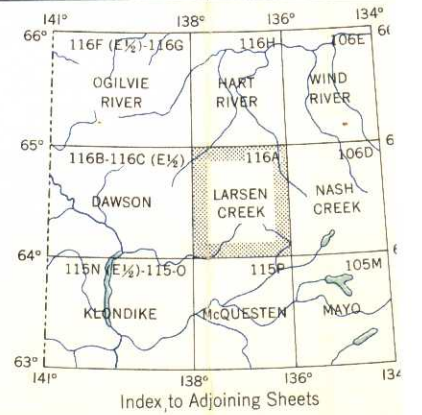
LARSEN CREEK

YUKON TERRITORY

Scale 1:250,000
1 Inch to 4 Miles Approximately

REFERENCE

- Contours, Elevation
- Contours, Depression
- Contours, Approximate
- Stream, Intermittent or Dry
- Sand, Gravel or Mud
- Rapids and Falls
- Marsh or Swamp
- Wooded Areas



Declination of the compass needle at any place along
near line is the declination given on that broken line.
Where the declination is between those given on
neighbouring broken lines; that at the place marked
a declination is between 34°00'E and 34°30'E. The
action of the compass needle is decreasing 4 1/2
minimally.

Index to Adjoining Sheets



TRVERSE

Change in trend
 (D. or S. C.)
 2000
 MONSONITE???

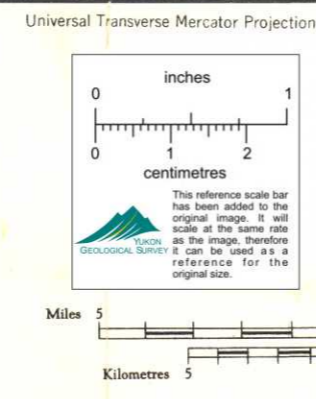
THE DECLINATION OF THE COMPASS NEEDLE 1954
 The declination of the compass needle of any place along a broken line is the declination given at that place. At other places the declination is between those given on the neighbouring broken lines. At the place marked A, the declination is between 34°00'E and 34°30'E. The declination of the compass needle is decreasing 4 1/2 min. annually.

Produced by the Surveys and Mapping Branch, Department of Mines and Technical Surveys, 1954, from air photographs taken in 1951 and 1952. Printed by the Army Survey Establishment, R.C.E., Department of National Defence, 1955.

Universal Transverse Mercator Projection

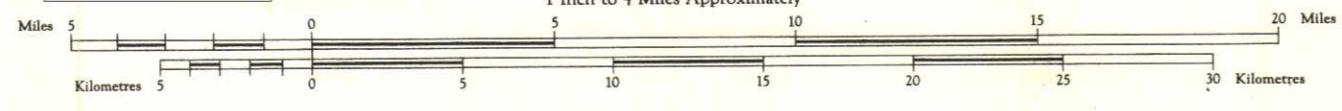
Contour interval 500 Feet
 All Elevations in Feet above Mean Sea Level
 North American Datum 1927

Contours may be obtained from the Map Distribution Office, Department of Mines and Technical Surveys, Ottawa, at 25 cents each.



LARSEN CREEK
 YUKON TERRITORY

Scale 1:250,000
 1 Inch to 4 Miles Approximately



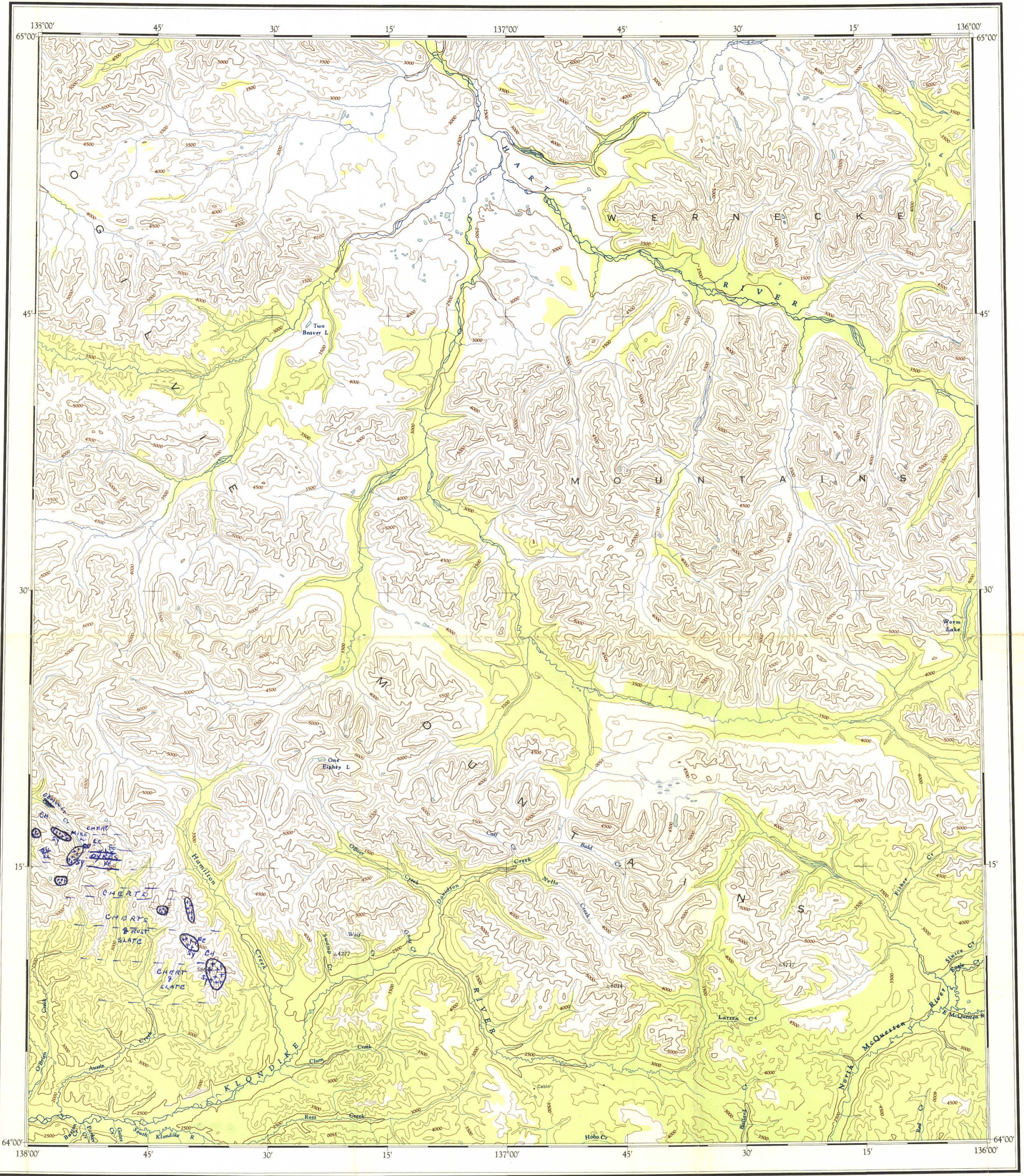
REFERENCE

- Wagon or Winter Road
- Trail or Portage
- Village or Settlement
- Post Office
- Building or Cabin
- Horizontal Control Point
- Astronomical Position
- Spot Elevation (in feet)

REFERENCE

- Contours, Elevation
- Contours, Depression
- Contours, Approximate
- Stream, Intermittent or Dry
- Sand, Gravel or Mud
- Rocks and Falls
- Marsh or Swamp
- Wooded Areas

Patte



A.R. Lindsay
 CU. COPPER
 SY. SYENITE
 CH. CHERT
 FE. IRON
 SL. SLATE
 QU. QUARTZ

THE DECLINATION OF THE COMPASS NEEDLE 1954
 Produced by the Survey and Mapping Branch, Department of Mines and Technical Surveys, 1954, from air photographs taken in 1951 and 1952. Printed by the Army Survey Establishment, R.C.E., Department of National Defence, 1955.

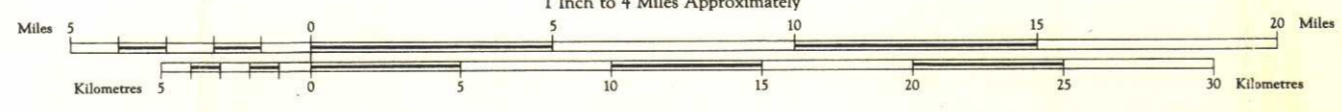
REFERENCE

Wagon or Winter Road	---
Trail or Portage	---
Village or Settlement	○
Road Office	○
Building or Cabin	□
Horizontal Control Point	△
Astronomical Position	⊙
Spot Elevation (in feet)	4275

"Syenite" is low quartz monzonite

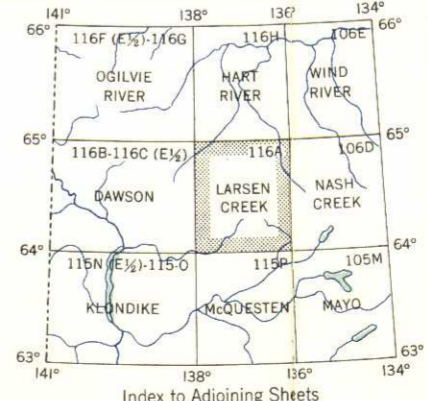
LARSEN CREEK
 YUKON TERRITORY

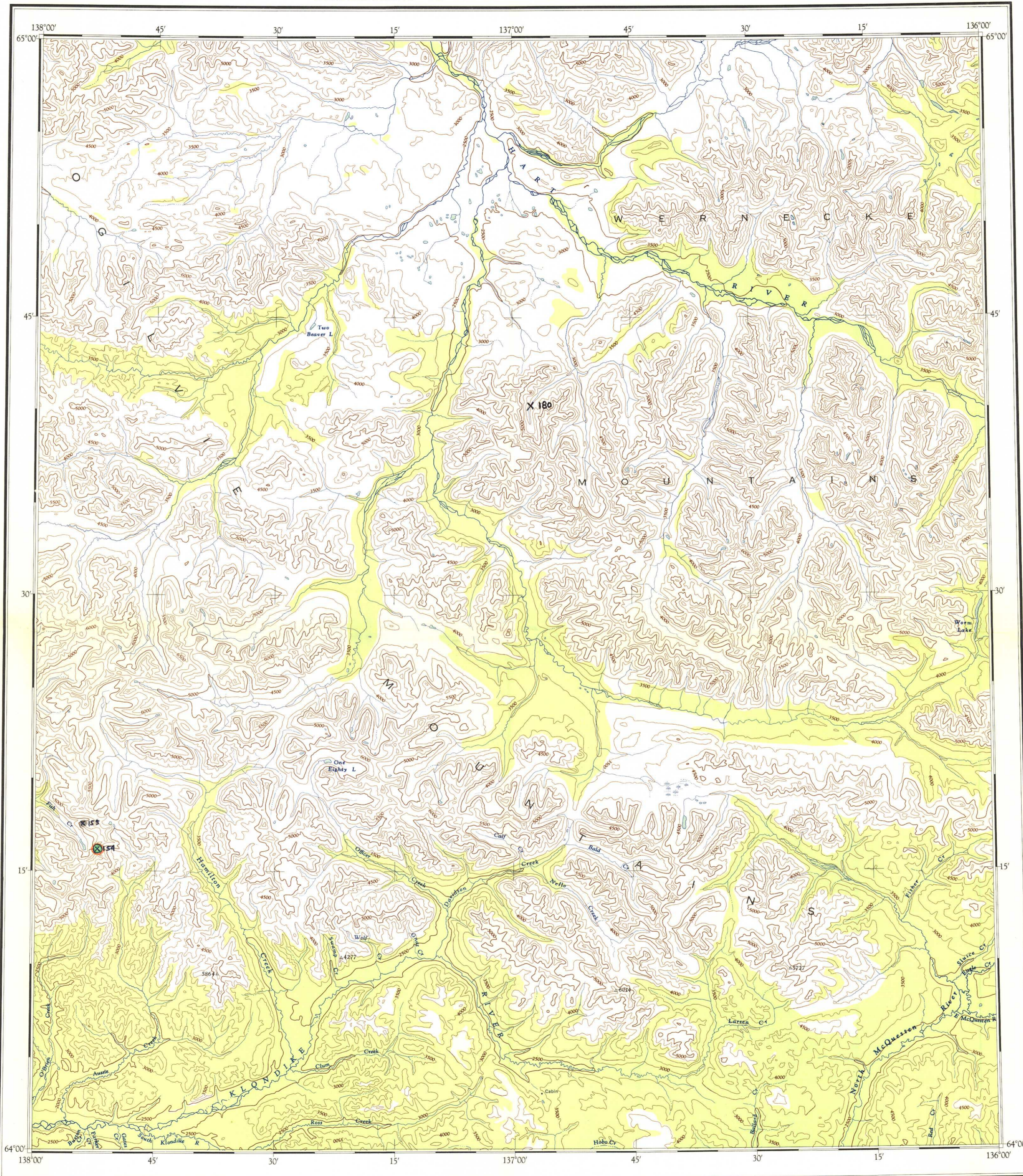
Scale 1:250,000
 1 Inch to 4 Miles Approximately



REFERENCE

Contours, Elevation
Contours, Depression
Contours, Approximate
Streams, Intermittent or Dry
Sand, Gravel or Mud
Rocks and Falls
Marsh or Swamp
Wooded Area





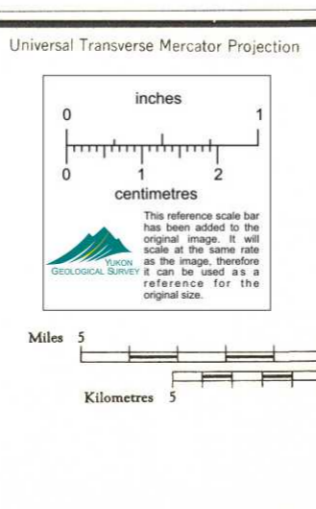
THE DECLINATION OF THE COMPASS NEEDLE 1954

The declination of the compass needle at any place along a broken line is the declination given at that broken line. At other places the declination is between those given on the neighboring broken lines. Thus, at the place marked A, the declination is between 34°00'E and 34°30'E. The declination of the compass needle is decreasing 4 1/2" per year.

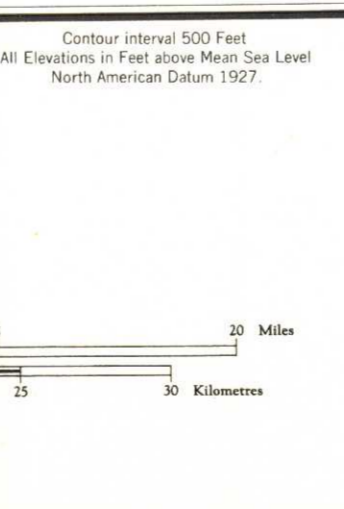
Produced by the Surveys and Mapping Branch, Department of Mines and Technical Surveys, from air photographs taken in 1951 and 1952. Printed by the Army Survey Establishment, R.C.E., Department of National Defence, 1955.

REFERENCE

Wagon or Winter Road
 Trail or Portage
 Village or Settlement
 Post Office
 Building or Cabin
 Horizontal Control Point
 Astronomical Position
 Spot Elevation, in feet

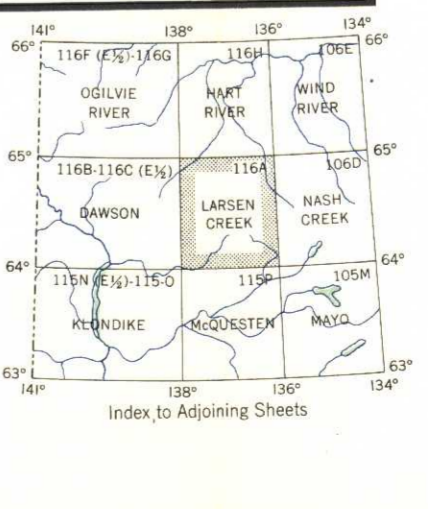


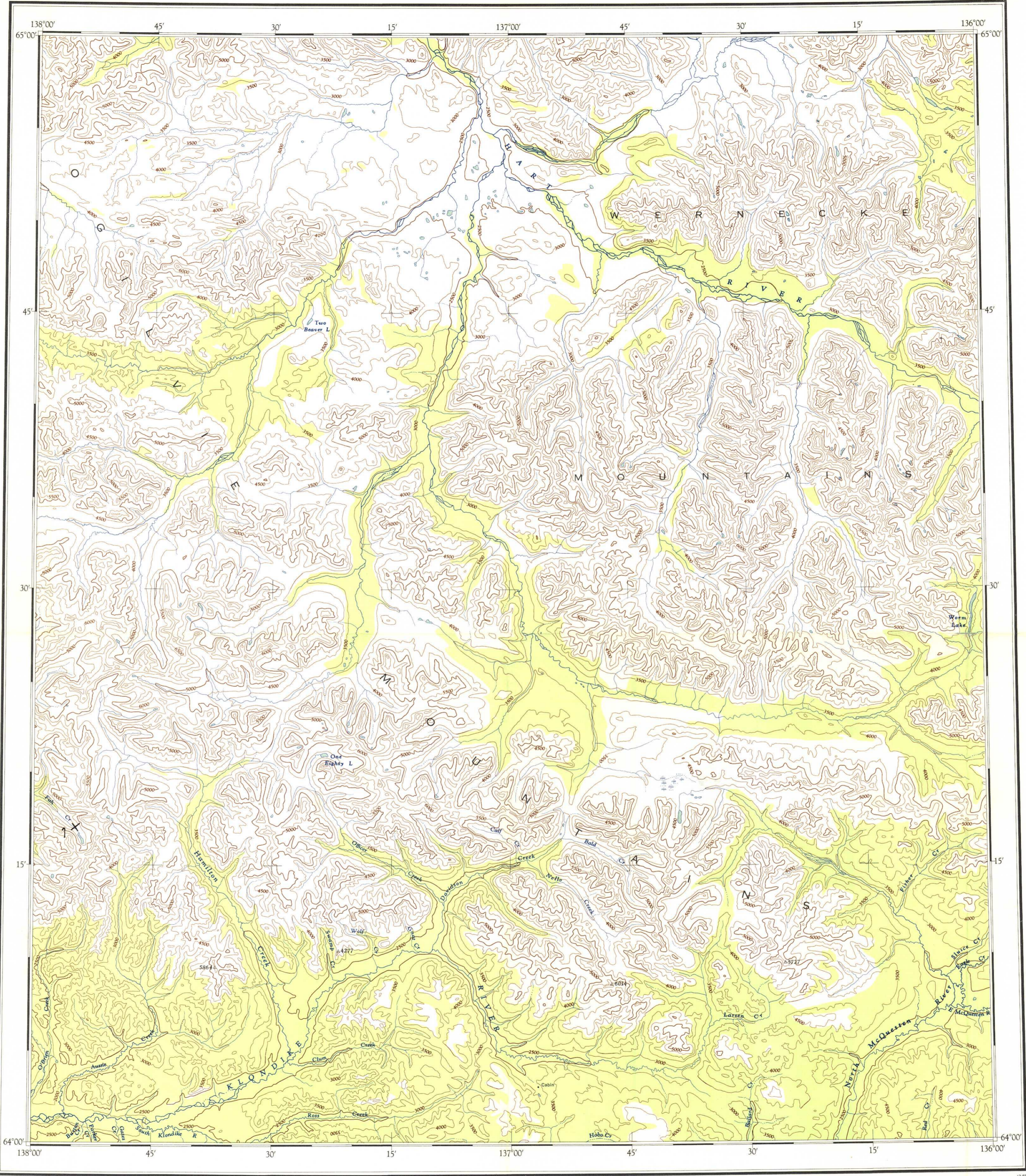
LARSEN CREEK
 YUKON TERRITORY
 Mineral Index Map
 Scale 1:250,000
 1 Inch to 4 Miles Approximately



REFERENCE

Contours, Elevation
 Contours, Depression
 Contours, Approximate
 Stream, Intermittent or Dry
 Sand, Gravel or Mud
 Rapids and Falls
 Marsh or Swamp
 Wooded Area





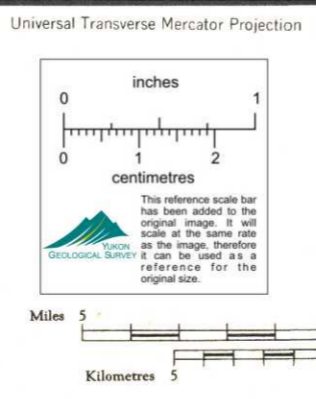
THE DECLINATION OF THE COMPASS NEEDLE 1954

The declination of the compass needle at any place along a broken line is the declination given for that place. At other places the declination is between those given on the neighbouring broken lines. Thus, at the place marked A, the declination is between 34°00' E and 34°15' E. The declination of the compass needle is decreasing 4 1/2" annually.

Produced by the Survey and Mapping Branch, Department of Mines and Technical Surveys, from air photographs taken in 1951 and 1952. Printed by the Army Survey Establishment, R.C.E., Department of National Defence, 1955.

REFERENCE

Wagon or Winter Road
 Trail or Portage
 Village or Settlement
 Post Office
 Building or Cabin
 Horizontal Control Point
 Astronomical Position
 Spot Elevation (in feet) 4275



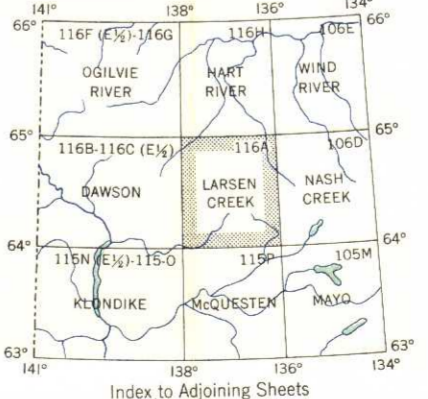
LARSEN CREEK
 YUKON TERRITORY

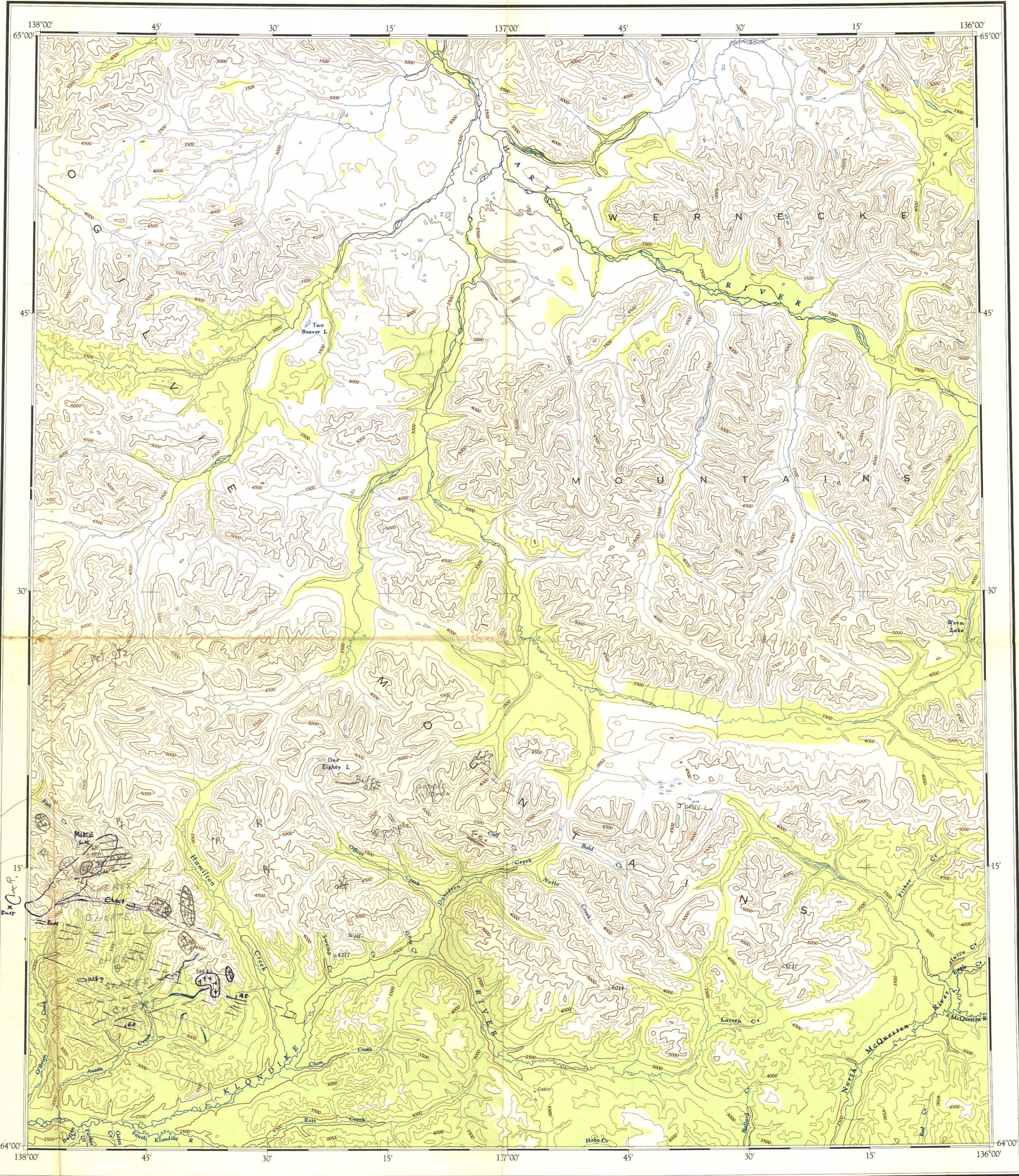
Scale 1:250,000
 1 Inch to 4 Miles Approximately

Contour Interval 500 Feet
 All Elevations in Feet above Mean Sea Level
 North American Datum 1927.

REFERENCE

Contours: Elevation
 Contours: Depression
 Contours: Approximate
 Streams, Intermittent or Dry
 Sand, Gravel or Mud
 Rapids and Falls
 Marsh or Swamp
 Wooded Area
 Copies may be obtained from the Map Distribution Office, Department of Mines and Technical Surveys, Ottawa, at 25 cents each.





CO Cobble
 BY Shale
 CL Chert
 FE Iron
 SL SLATE
 QD Quartz

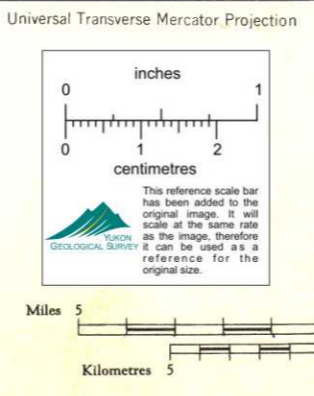
THE DECLINATION OF THE COMPASS NEEDLE 1954

The declination of the compass needle at any place along a broken line is the declination given in that column. At other places the declination is between those given on the neighboring broken lines. True or the place marked A, the declination is between 34°00'E and 34°30'E. The declination of the compass needle is increasing 4 1/2 minutes annually.

Produced by the Surveys and Mapping Branch, Department of Mines and Technical Surveys, 1954, from air photographs taken in 1951 and 1952. Printed by the Army Survey Establishment, R.C.E., Department of National Defence, 1955.

REFERENCE

- Wagon or Winter Road
- Trail or Portage
- Village or Settlement
- Post Office
- Building or Cabin
- Horizontal Control Point
- Astronomical Position
- Spot Elevation, in feet



LARSEN CREEK

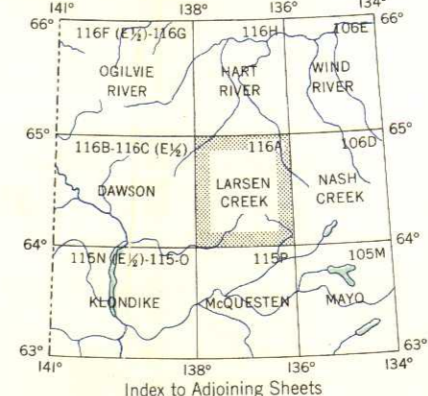
YUKON TERRITORY

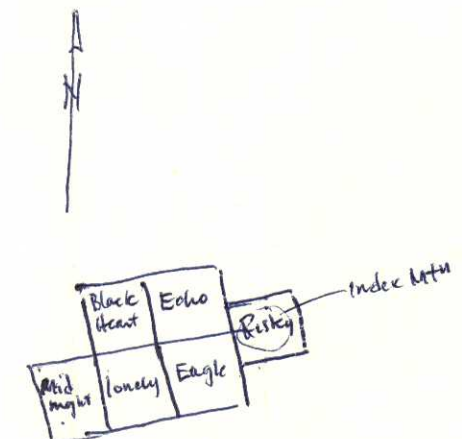
Scale 1:250,000
 1 Inch to 4 Miles Approximately

Contour interval 500 Feet
 All Elevations in Feet above Mean Sea Level
 North American Datum 1927

REFERENCE

- Contours, Elevation
- Contours, Depression
- Contours, Approximate
- Streams, Intermittent or Dry
- Sand, Gravel or Mud
- Rapids and Falls
- Marsh or Swamp
- Wooded Area





N. 2-3 1/2 mi. N. of Miles Hk.

March 2
Larsen Creek
Index letter

THE DECLINATION OF THE COMPASS NEEDLE 1954
Produced by the Survey and Mapping Branch, Department of Mines and Technical Surveys, from air photographs taken in 1951 and 1952. Printed by the Army Survey Establishment, R.C.E., Department of National Defence, 1955.

REFERENCE

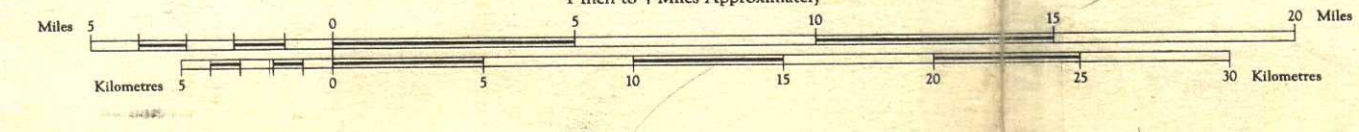
Wagon or Winter Road	---
Trail or Portage	---
Village or Settlement	○
Post Office	□
Building or Cabin	■
Horizontal Control Point	△
Astronomical Position	⊙
Spot Elevation, (in feet)	• 425

Universal Transverse Mercator Projection
Map of Larsen Creek
Red-green slates
N. 91 W. at 2 miles N.

116A LARSEN CREEK

YUKON TERRITORY

Scale 1:250,000
1 Inch to 4 Miles Approximately



Contour interval 500 Feet
All Elevations in Feet above Mean Sea Level
North American Datum 1927

Copies may be obtained from the Map Distribution Office, Department of Mines and Technical Surveys, Ottawa, at 25 cents each.

REFERENCE

Contours, Elevation	—
Contours, Depression	—
Contours, Approximate	—
Stream, Intermittent or Dry	—
Sand, Gravel or Mud	—
Rapids or Falls	—
Marsh or Swamp	—
Wooded Area	—

