

1) G. Lishy Aussie Camp

20.6.69

012660

The Intrusive south of camp consisting of Granitic or Syenitic rock appears in form of a Dike, striking roughly east west and dipping nearly vertical. Some parts are thinly capped by country rock (Chert) with occasional Hornfels sections near contact. Above location of Silt Sample 86 alterations of Scarn with Pyrite, Magnetite and specks of Chalco Pyrite mineralisation is found in form of float below the rim of Intrusion. One piece of float containing some Chalco was found in Creek main branch about  $\frac{1}{2}$  mile west of camp.

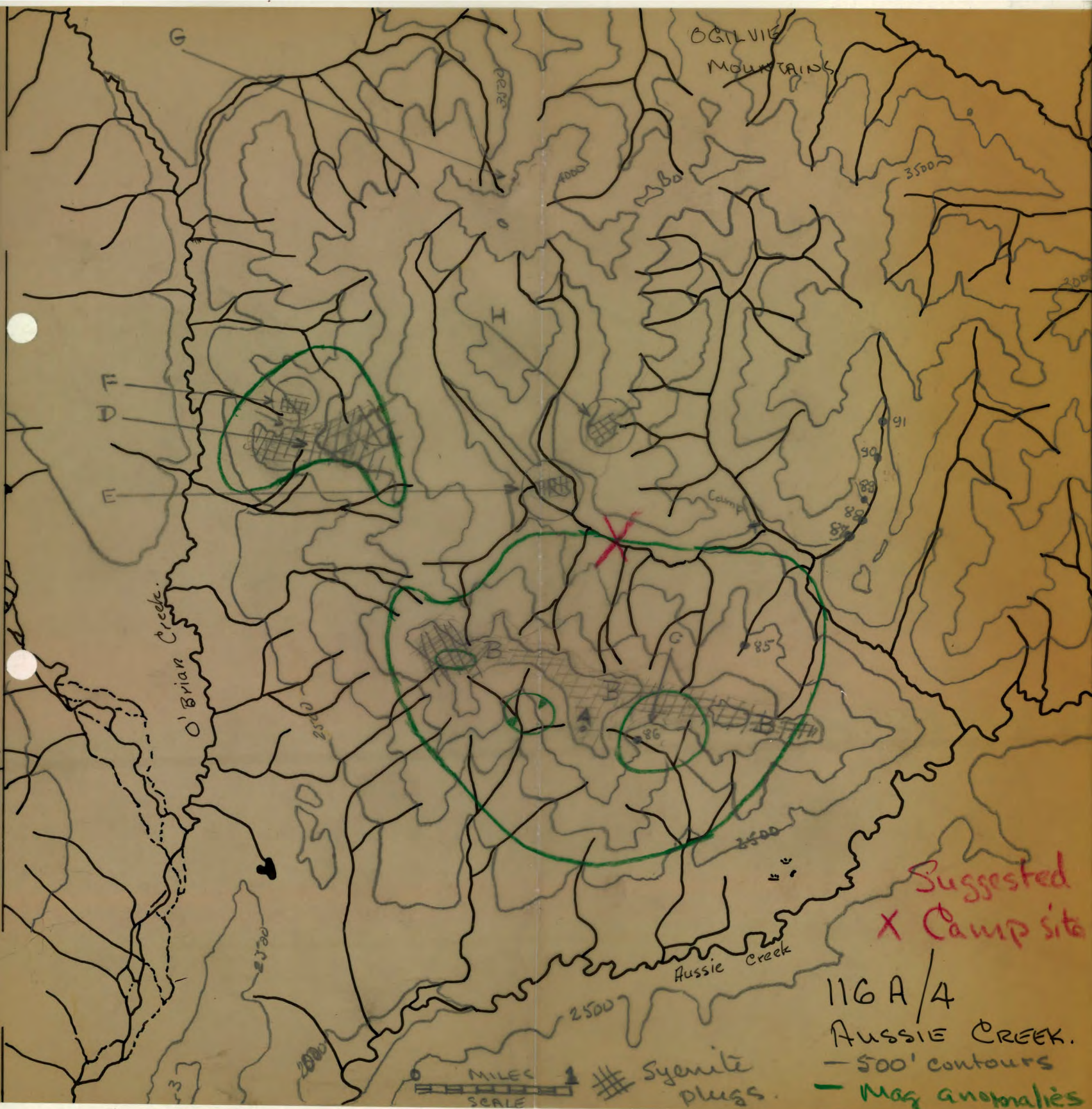
The second anomalous Intrusive north west of camp seemingly barren of mineralisation might not be of the Dike type since it leads out toward O'Brian Creek in a high shoulder. The two smaller Intrusions north west of camp although seem to be of the Dike type. Through lack of proper exposures nothing positive can be said nor was any mineralisation or alteration found.

Cherts which dominate the entire area are vary-colored with white and rusty weathering surfaces. Some sections in the area especially the northern divide are of a gritty shaly appearance and can be recognized by a light grey weathered talus (sample 5.) Strike and dip in the general area is identical to that of the southern Intrusive.

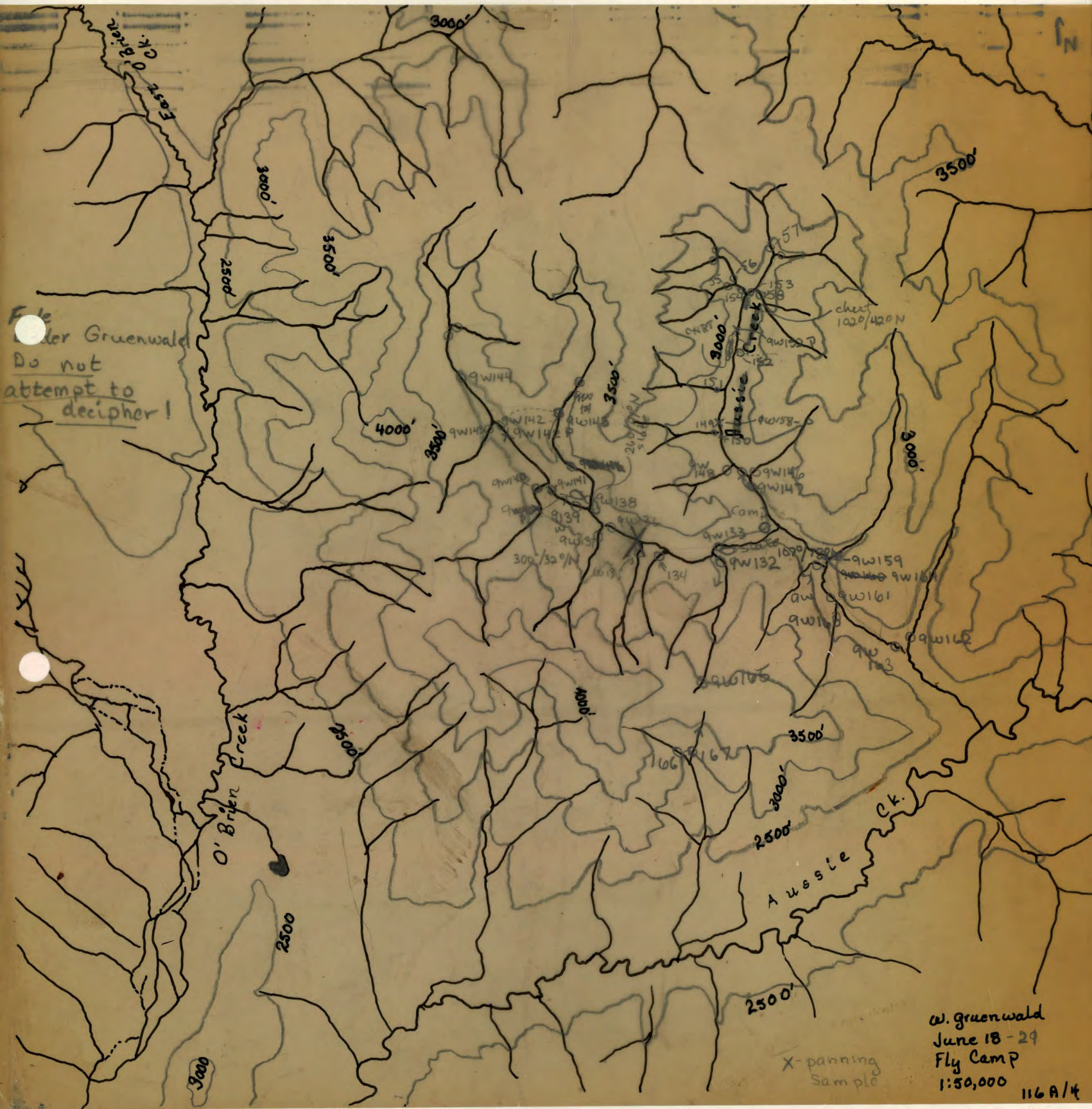
Lampodora

## Anomalies;

The cause of these might be two-fold. It might be caused by the Syenite itself intruding an area of very low magnetic background or by the accompanying Hornfels of which sample FX is an example (slightly magnetic.) Sample C which contains some Magnetite can be ruled out since it occurs only at the locality of Silt Sample 86 in very limited quantities. No mineralisation except at locality of sample C and one piece of float in creek was found in the area prospected.



File  
W. Gruenwald  
Do not  
attempt to  
decipher!



W. Gruenwald  
June 18-29  
Fly Camp  
1:50,000  
116A/4