

LEGEND

Note: Weighted legend blocks indicate map-units that appear on this map

- QUATERNARY**
 25 Unconsolidated glacial and alluvial deposits
- TERTIARY**
 24 Dark grey and brown andesite and basalt, commonly porphyritic; minor shale, sandstone, and conglomerate

- CRETACEOUS (?) AND TERTIARY**
UPPER CRETACEOUS (?) AND LATER
 22 22a, poorly consolidated, brown, buff, and grey, arkosic and micaceous sandstone, light and dark shale, poorly sorted conglomerate; minor lignite and agglomerate; 22b, brown weathering, thin-bedded, brown chert-grain sandstone, siltstone, shale, and fine chert-pebble conglomerate

- TERTIARY (?)**
 23 Quartz porphyry

- CRETACEOUS (?)**
 21 21a, fine- to coarse-grained, uneven textured, biotite granodiorite and biotite quartz monzonite; 21b, mainly hornblende and hornblende/biotite syenite, commonly porphyritic (potassium feldspar phenocrysts), uneven textured, mostly medium grained, locally fine or coarse grained; minor diorite

- 20 Orange to brown weathering diorite and gabbro; altered equivalents

- JURASSIC**
MIDDLE JURASSIC
 19 Brown weathering, thin-bedded, brown siltstone, commonly limy; minor black shale and sandstone

- PRE-MIDDLE JURASSIC**
 17 Grey and blue-grey, massive quartzite; minor slate and phyllite, commonly graphitic, argillaceous quartzite; 17a, thin-bedded and phyllitic quartzite, graphitic and chloritic slate and phyllite; minor limestone and massive quartzite

- TRIASSIC**
UPPER TRIASSIC
 18 Black weathering, platy, black limy shale and limestone; thin bands of grey to buff weathering limestone

- PERMIAN**
 16 White, light grey, and dark grey chert, cherty limestone, and limestone

- CARBONIFEROUS TO PERMIAN**
 15 Buff weathering, dark grey, thin- to medium-bedded limestone; minor black shale, chert, and chert-pebble conglomerate; 15a, dark shale, argillaceous limestone, and thin-bedded brown sandstone; minor chert-pebble conglomerate; 15b, black and silvery weathering shale and slate; minor platy, buff weathering grey limestone, impure sandstone

- DEVONIAN TO CARBONIFEROUS**
MIDDLE DEVONIAN TO CARBONIFEROUS
 13 Black shale, argillite, and slate, black platy limestone, chert, minor chert-pebble conglomerate and quartzite; 13a, brown weathering fine chert-pebble conglomerate and chert-grain sandstone

- DEVONIAN**
LOWER MIDDLE DEVONIAN
 11 Limestone, dark grey, brown and black, massive to thin-bedded, very fine grained, buff grey weathering

- SILURIAN (?) TO MIDDLE DEVONIAN**
 12 Dark grey weathering, black, thin-bedded, platy limestone, commonly argillaceous and locally siliceous and interbedded black chert

- CAMBRIAN, ORDOVICIAN, AND SILURIAN**
 8 Grey and buff weathering dolomite and limestone, mostly medium to thick bedded; minor platy black argillaceous limestone and dolomite (may include some 10 and 11); 8a, grey to dark grey weathering, dark volcanic rocks, many partly serpentinized, brown weathering grey-green limy tuff and argillite, and thin-bedded brown limestone

- CAMBRIAN**
MIDDLE (?) AND UPPER CAMBRIAN
 7 Buff, brown, and grey weathering, thin- to medium-bedded, limestone, and grey weathering thin- to thick-bedded, dolomite; minor brown and green shale and orange weathering dolomite

- LOWER (?) CAMBRIAN TO ORDOVICIAN (?)**
 6 Grey weathering, brown to buff limestone and limestone conglomerate; 6a, grey weathering, medium- to thick-bedded limestone and dolomite (may include some Precambrian)

- CAMBRIAN (?)**
 5 Mainly brick red, thick-bedded to massive sandstone and red to buff massive conglomerate; minor red shale, local andesitic or basaltic flows and sills

- PRECAMBRIAN**
 2 Orange weathering, platy, grey-green dolomite, dark slate, minor phyllite and quartzite; 2a, mainly black shale and slate, and platy sandstone; minor black limestone, quartzite, orange weathering dolomite and grey dolomite; 2b, buff weathering dolomite-boulder conglomerate; 2c, massive, cherty and quartzose, grey dolomite; thin-bedded, buff-weathering grey dolomite; minor black shale and white quartzite; 2d, buff, orange and pink dolomite, black shale; minor black limestone, red dolomite, green argillite, maroon quartzite and shale, and greenstone; 2e, dark grey, thinly laminated dolomite; minor black chert

- PRECAMBRIAN**
 1 Mainly dark grey, grey-green, and black, thin-bedded argillite, slate, and phyllite; minor grey quartzite, orange weathering dolomite, and conglomerate; 1a, grey weathering, thinly laminated, silicified limestone

- METAMORPHIC ROCKS SOUTHWEST OF TINTINA TRENCH**
- A Reddish brown weathering dark green serpentinized ultrabasic rocks
- B Mainly buff weathering, light pale green quartz-muscovite-chlorite schist, and schistose, chloritic quartzite, with all intermediate rock types also present; minor silvery muscovite schist, fine-grained quartz-biotite gneiss, thinly laminated quartz-graphite-sericite schist and quartzite, and sheared igneous rocks, primarily quartz-feldspar porphyries

- C Grey and grey-green, micaceous quartzite; dark grey, light grey and silvery quartz-mica schist; minor fine-grained quartz biotite gneiss, graphitic schist and quartz-muscovite-chlorite schist; Ca, coarsely crystalline, whitish limestone
- D Dark weathering greenstone and banded amphibolite gneiss; minor chloritic quartz-mica schist, graphitic quartz-mica schist, quartzite, and limestone
- E Fine- to medium-grained, granitic textured, quartz-biotite gneiss; minor quartzite, quartz-mica and biotite-chlorite schist, and quartz-feldspar pegmatite

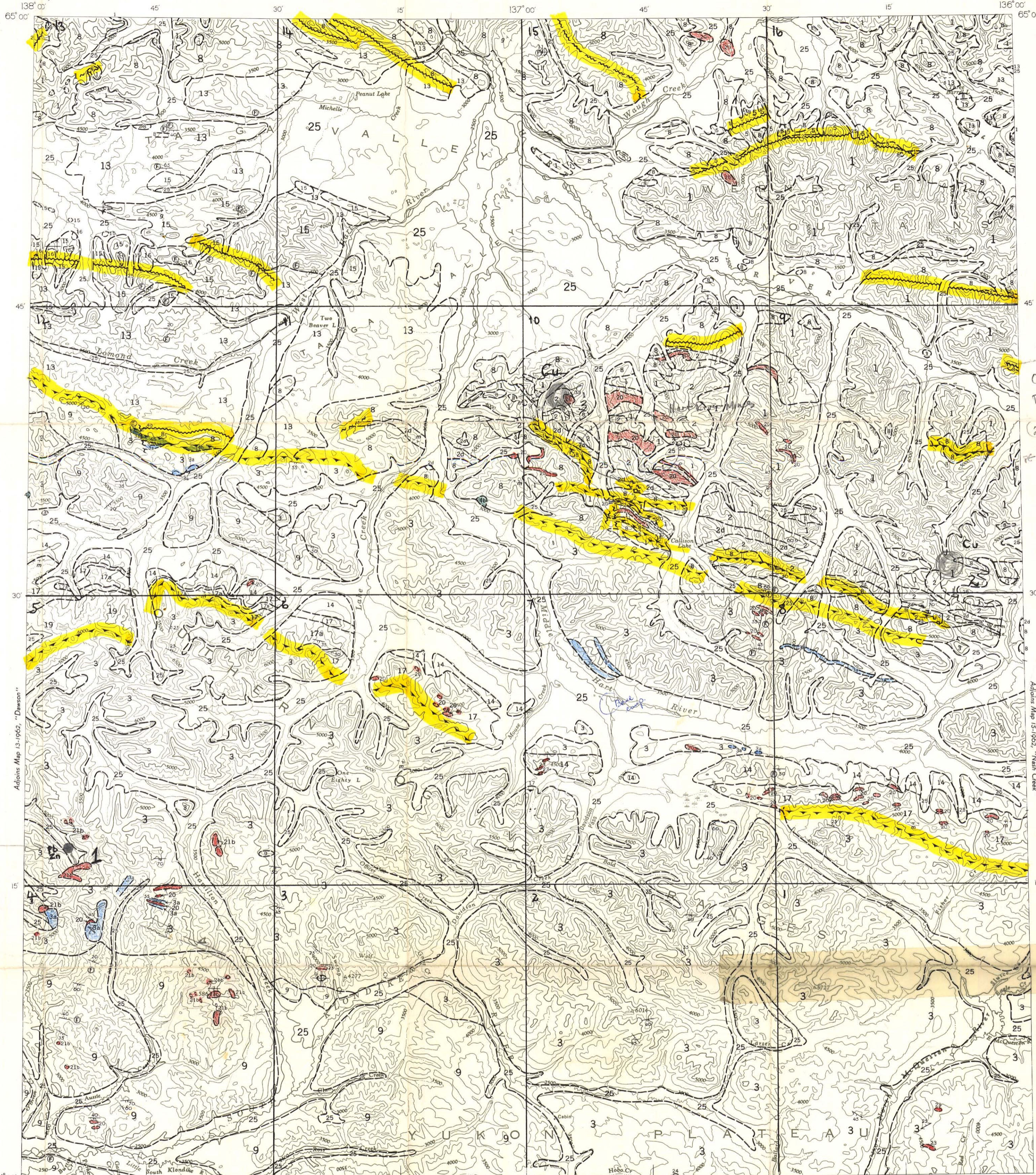
- Geological boundary (defined, approximate and assumed)
- Bedding (horizontal, inclined, vertical)
- Bedding, tops unknown (dip known)
- Bedding, estimated attitudes, may in part be of foliation; horizontal, inclined (dip: g, gentle; m, medium; s, steep)
- Fault (defined, approximate, assumed)
- Thrust fault (teeth in direction of dip; defined, approximate or assumed)
- Anticline
- Syncline
- Fossil locality

Geology by L. H. Green and J. A. Roddick, 1961

Cartography by the Geological Survey of Canada, 1962

Mean magnetic declination, 33°20' East, decreasing 4.2' annually. Readings vary from 33°20' E in the SW corner to 34°51' E in the NE corner of the map area.

PRELIMINARY SERIES

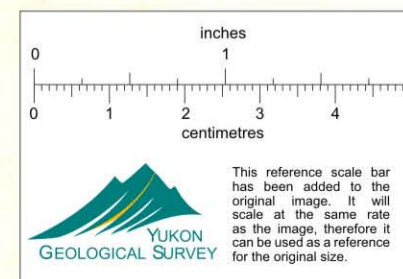


MAP 14-1962
 TO ACCOMPANY PAPER 62-7
 GEOLOGY
 LARSEN CREEK
 YUKON TERRITORY

Scale: One Inch to Four Miles = $\frac{1}{253,440}$ Miles

0 2 4 8 12 Miles

COPIES OF THIS MAP MAY BE OBTAINED FROM THE DIRECTOR, GEOLOGICAL SURVEY OF CANADA, OTTAWA



- LEGEND**
- Intermittent stream
- Marsh
- Contours (interval 500 feet)
- Height in feet above mean sea-level 2327

Base-map by the Surveys and Mapping Branch, 1954

Geographical names subject to revision

MAP 14-1962
 LARSEN CREEK
 YUKON TERRITORY

012672