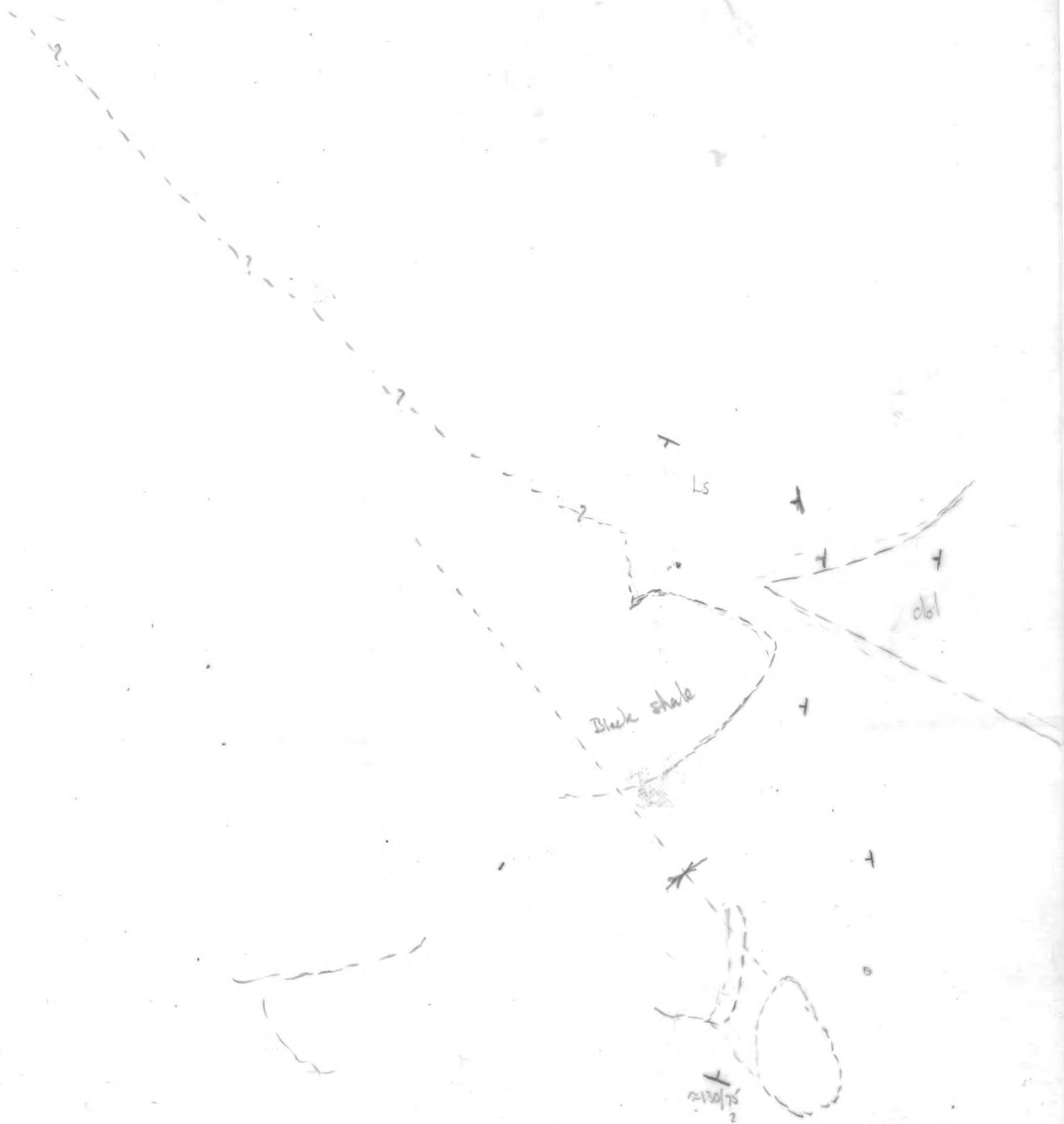




Scale 1" = 1/2 mi
105 P. 13
Paul Schota
Prospect & map



012709

A13536-29

med. grey LS or DS
weathers into shaley blocks,
no good marker beds.

40

A 12233 - 461

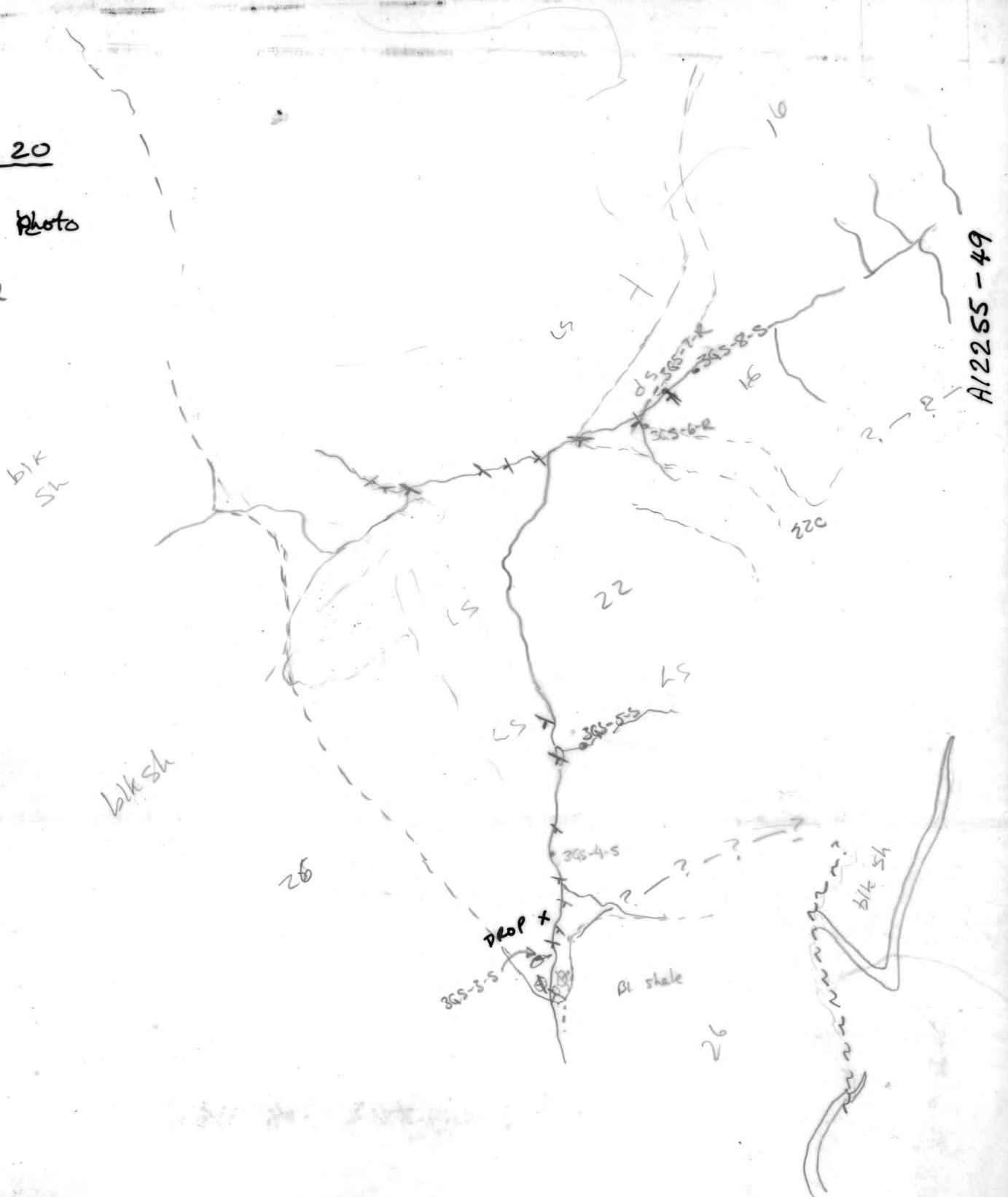
106B-1

thin bedded
shaley grey LS or DS

Western

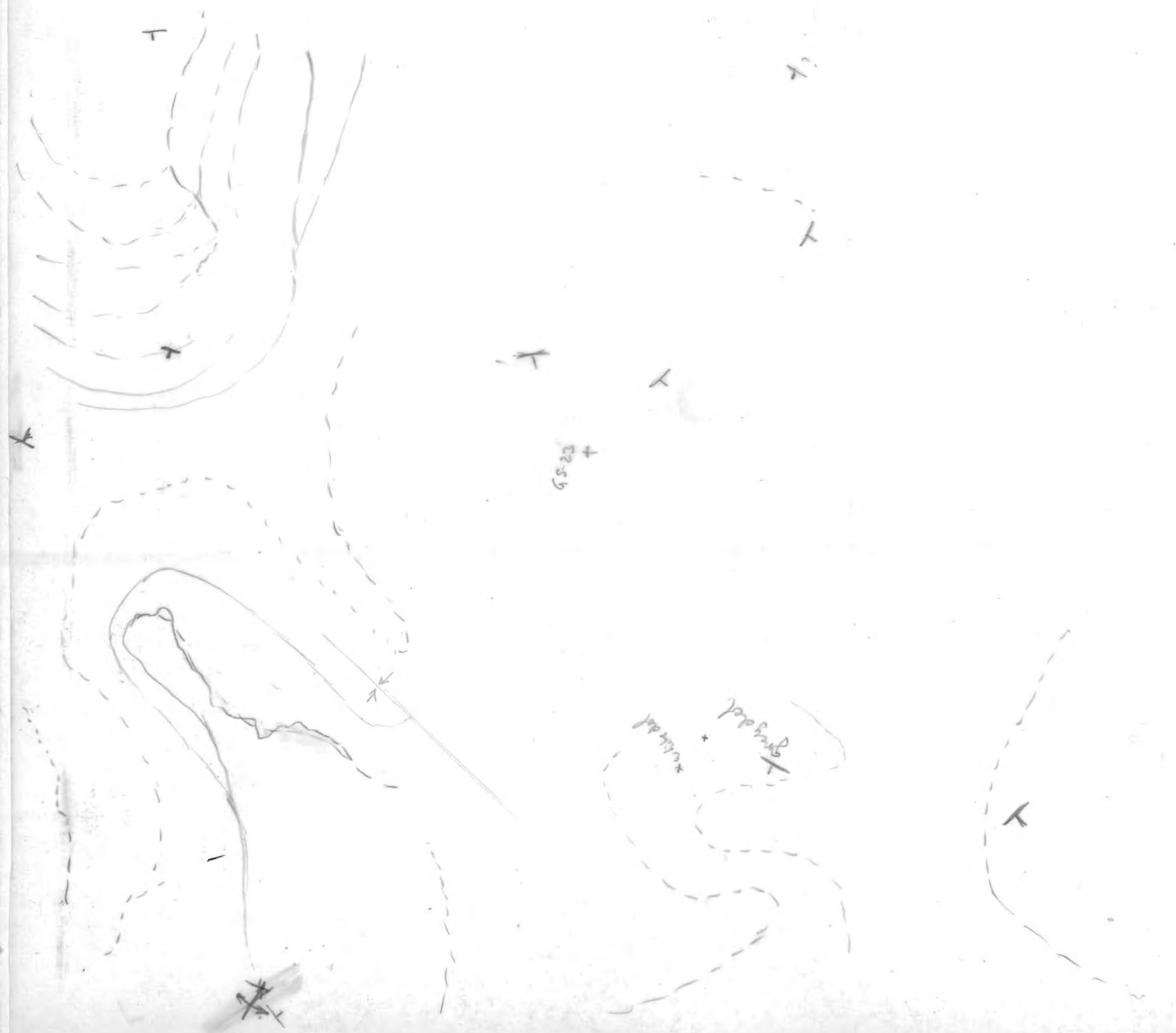
TRAVERSE 20

2 photos
this is west photo
105 P-13
Paul Sihota
6 July 73



Paul Sihota

106A3





Paul Sihota

105P 14

106A 3

A12246-159

middle

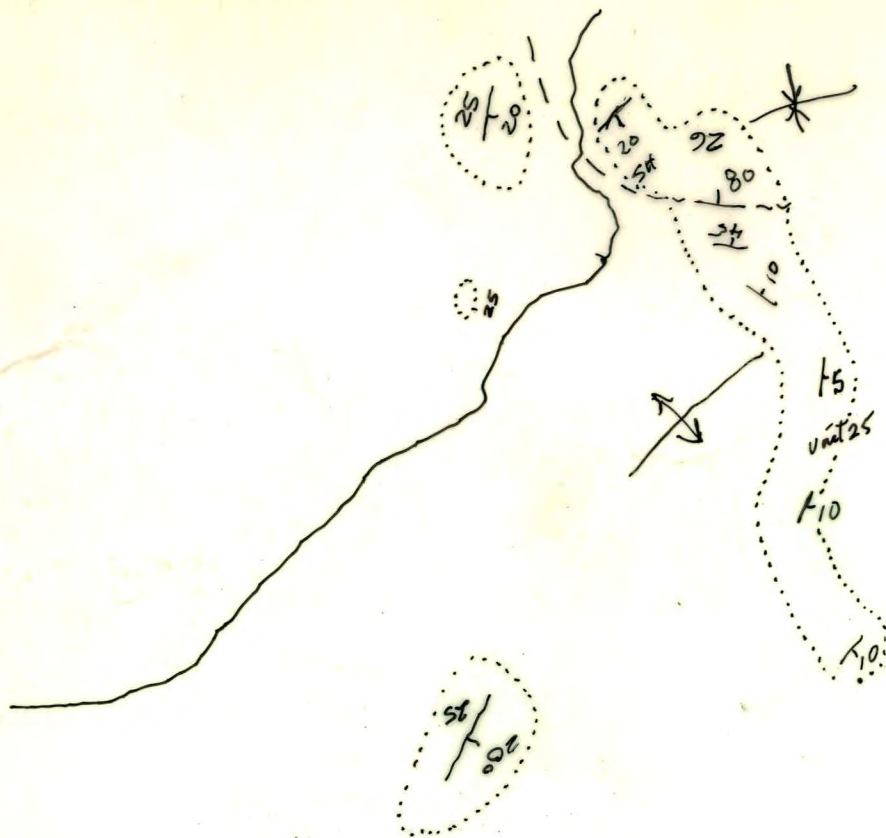
massive ls

LS
sh
MS
LS

approx
shale, blocky
w carb.

45
26 shale

103A4
A12248-70



106A4 x 5

A12225-396

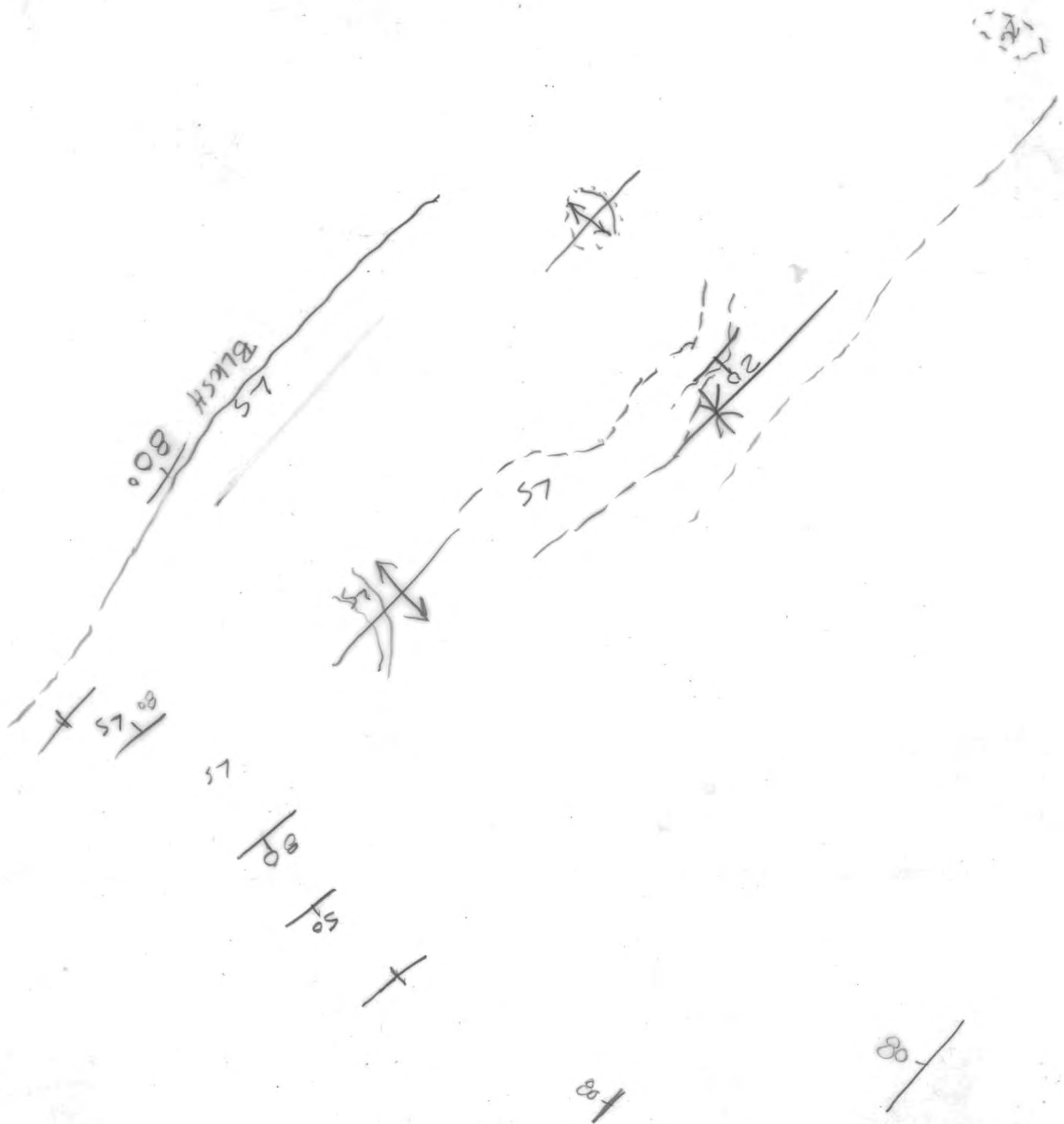
521
174
33

Shoda
L
T
5-1

Sibota
106A4

A12225-368

58
280
Snake



106A4
A 12225-372

10:01

09/1/60
20
57
MISSISSIPPI
22



60 LS

SH

09/1/60
20
57

25

8

106A4
A12225-392



106A5

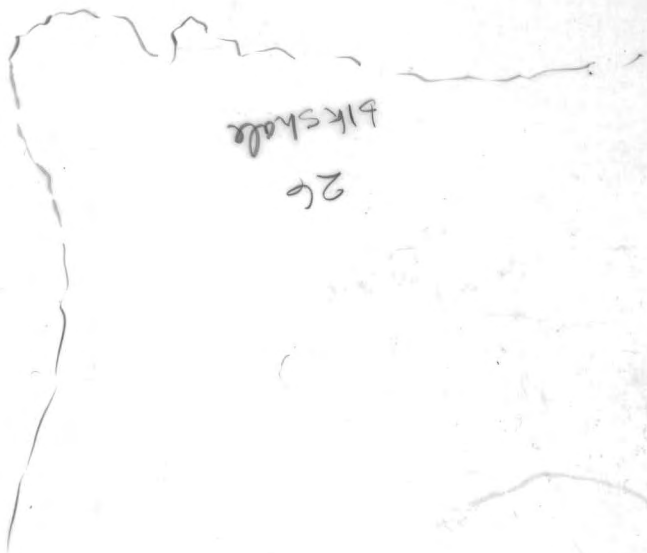
A12225-364

2 →

to
15

PP-03
40X270
1257

106A-5
A12225-363



Bikshade

26

← 2

106A4
A12188-279

(20/25/5)

Shale



← 2

106A4

A12188-278

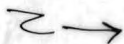


106A4

A12100-281



LS



40 Shale

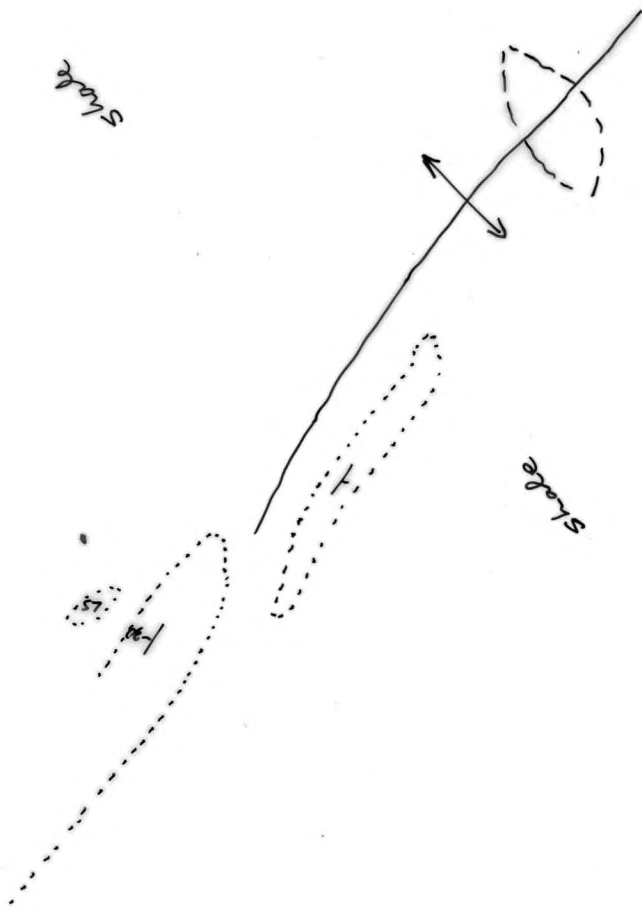


5 SHALE

1

106A4

A12225-369



106A4
A12248-66

SHK

SHK

SHK

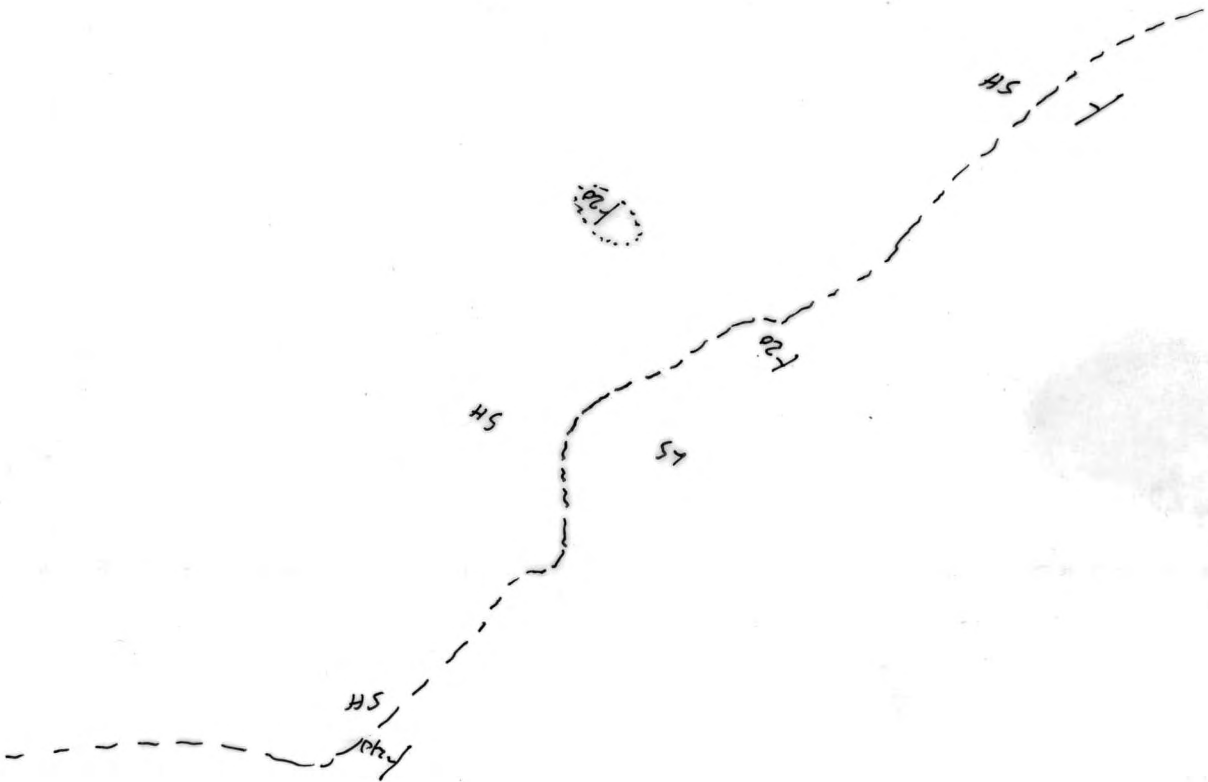
SHK

SHK

SHK

SHK

SHK



east

← N

106A4
A12225-388



(5)

SH

SH

/// T-50

T-60

T-60

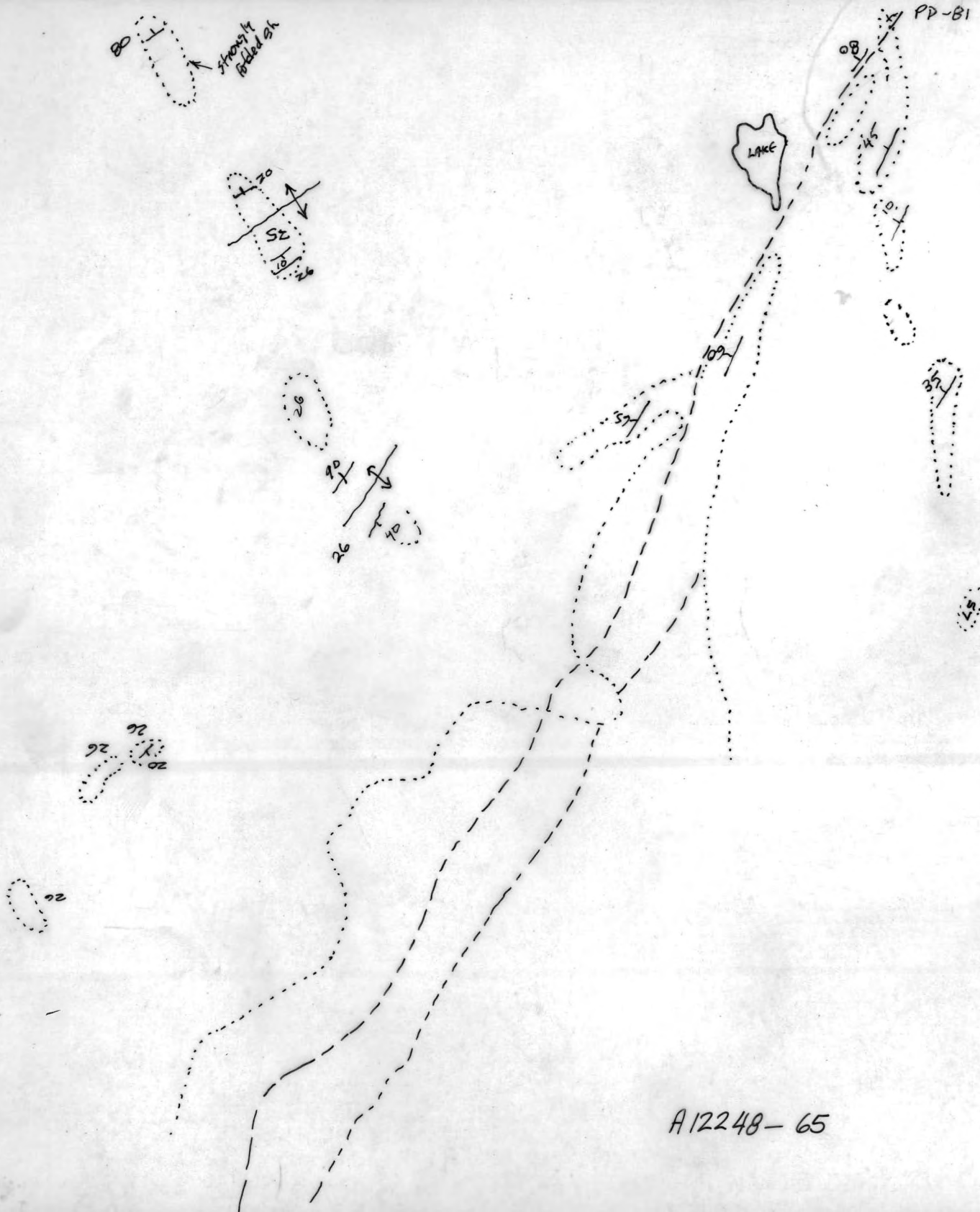
T-60
25/26

BLK
SH

/// T-85

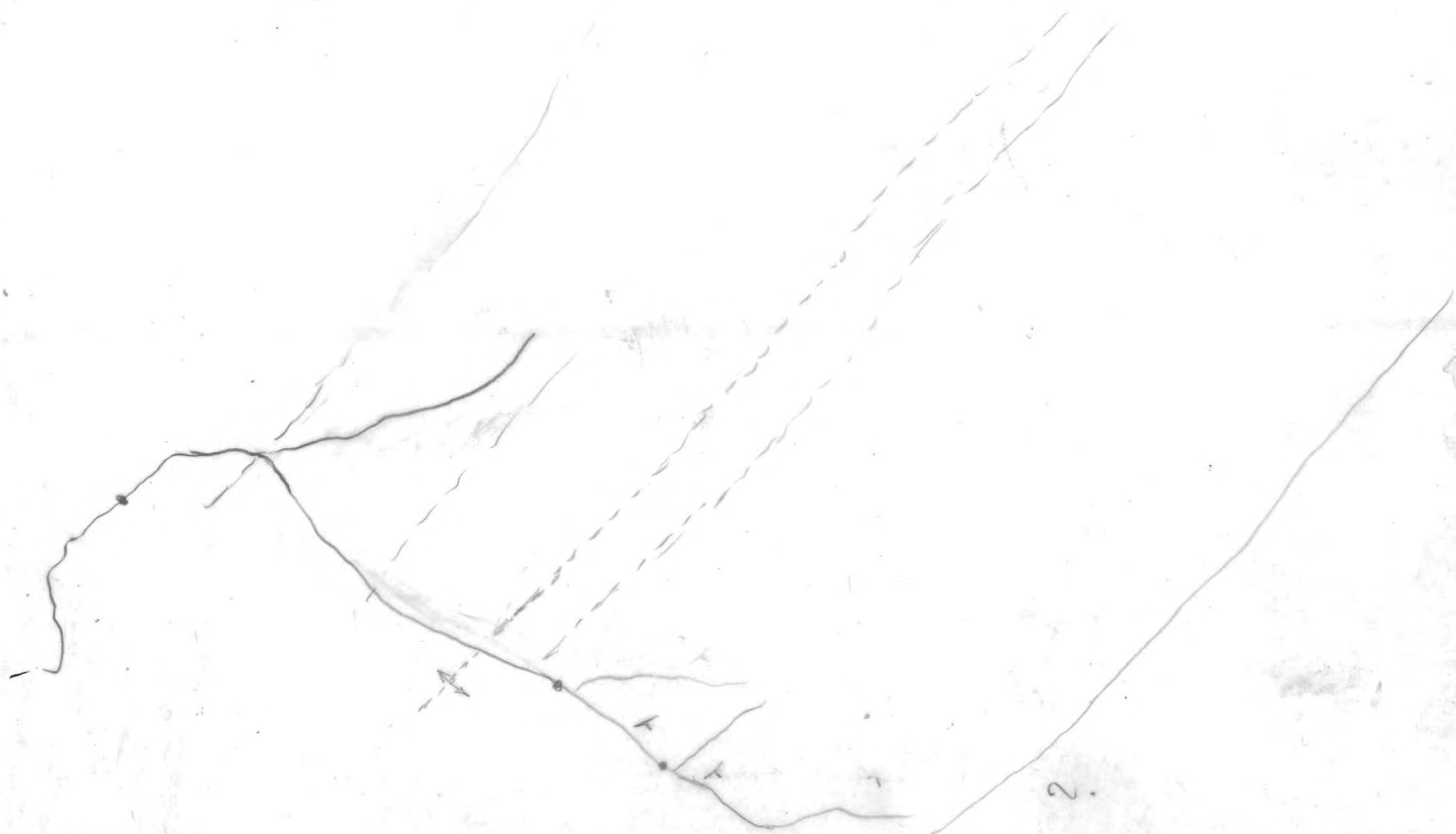
/// SH

106A4
A12225-370



A12248-65

Paul -



A12188-274