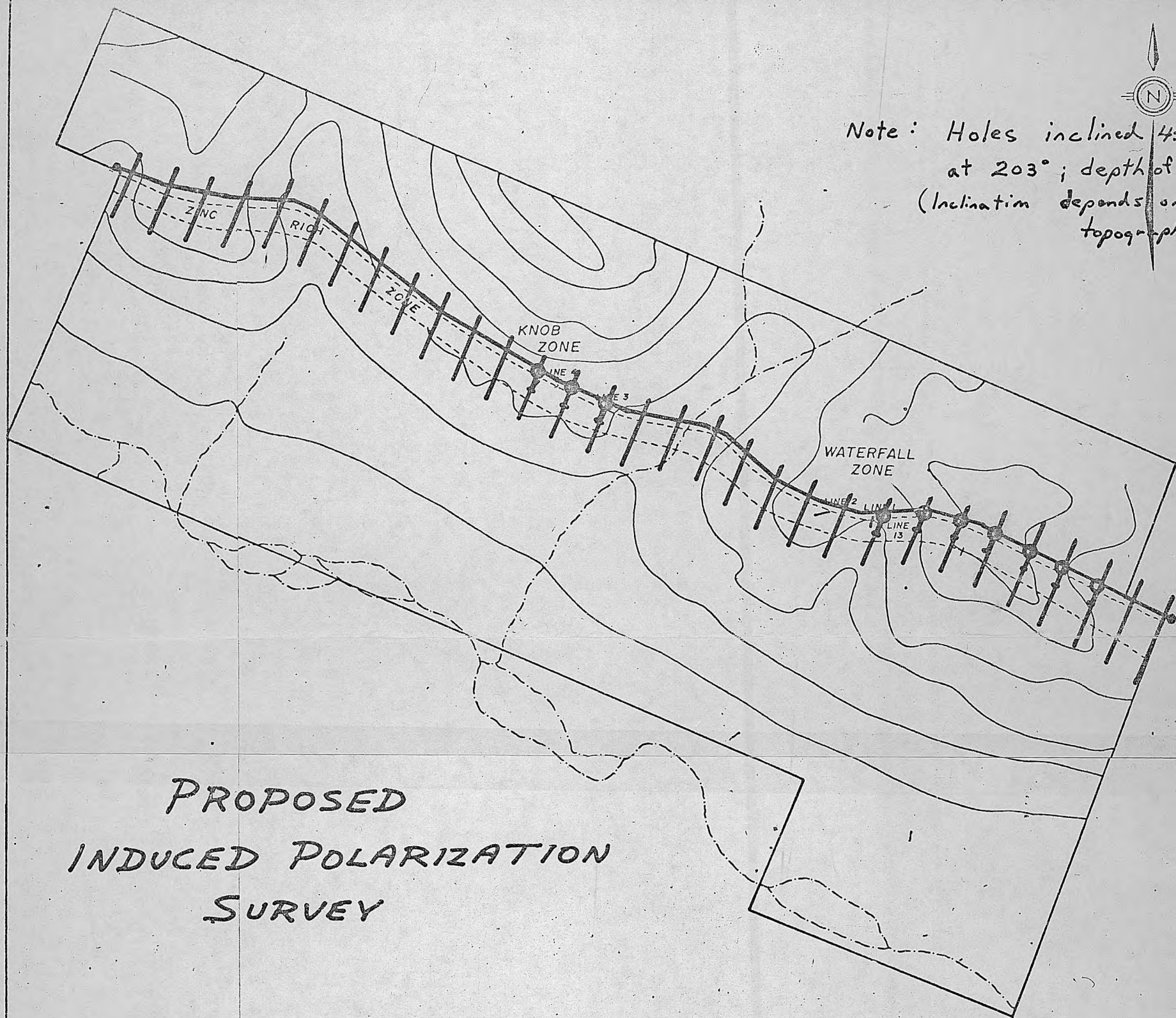




Note: Holes inclined 45° to 60°
at 203° ; depth of 500'
(Inclination depends on
topography)



PROPOSED
INDUCED POLARIZATION
SURVEY

PROPOSED
PHASE I
DIAMOND DRILL PLAN

012729

106-C - Boycek
CYPRESS RESOURCES LTD. (N.P.L.)

CHIP SAMPLING LINES
Scale: 1 inch = 2500 feet