

SHEET 106C-13

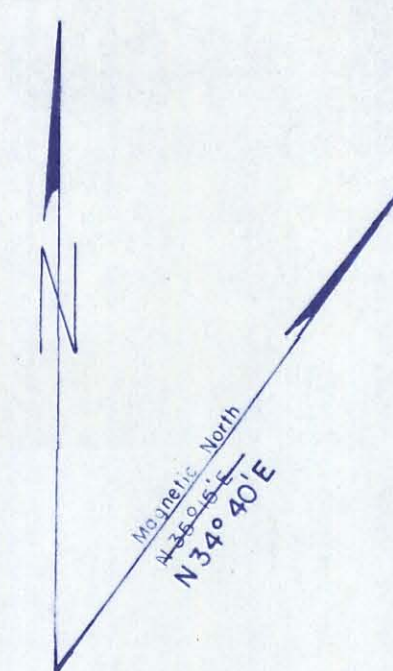
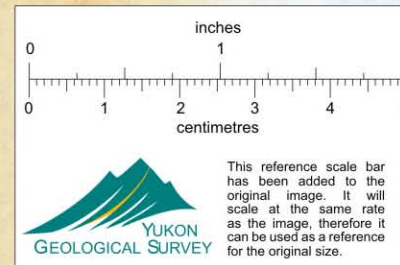
LATITUDE 64°45' TO 65°00'
LONGITUDE 133°30' TO 134°00'

CANADA
DEPARTMENT OF NORTHERN AFFAIRS AND NATIONAL RESOURCES

SCALE: 1/2 MILE TO 1 INCH

FT. 500 1500 3000 4500 6000 7500 9000 10500 FT.

ISSUED UNDER THE AUTHORITY OF THE MINISTER



106E-1	106F-4	106F-3
106D-16	106C-13	106C-14
106D-9	106C-12	106C-11

NOTICE
THIS MAP IS ISSUED AS A PRELIMINARY GUIDE FOR WHICH THE DEPARTMENT OF NORTHERN AFFAIRS AND NATIONAL RESOURCES WILL ACCEPT NO RESPONSIBILITY FOR ANY ERRORS, INACCURACIES OR OMISSIONS WHATSOEVER ON THE SHEET BEFORE ADEQUATE SURVEYS HAVE BEEN MADE.

WHITEHORSE 21 SEPT. 1972
5 MAY 1965

7 NOV 74 24 SEP 75
2 OCT 74 2 SEP 75
200 NOV 74 14 JUL 75
18 JUNE 74 18 JUL 75
14 MAY 74 8 JUL 75
26 APR 73 15 MAY 72



>100ftm >100ftm
Cu Pb
U Zn
>10ftm >400ftm

Hs = gnt Unit
Hc = carbonate