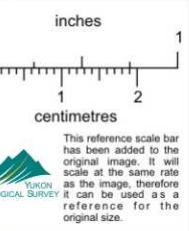


106-D



204000  
KINDSAY  
Fossil  
380' above base of H.  
140'

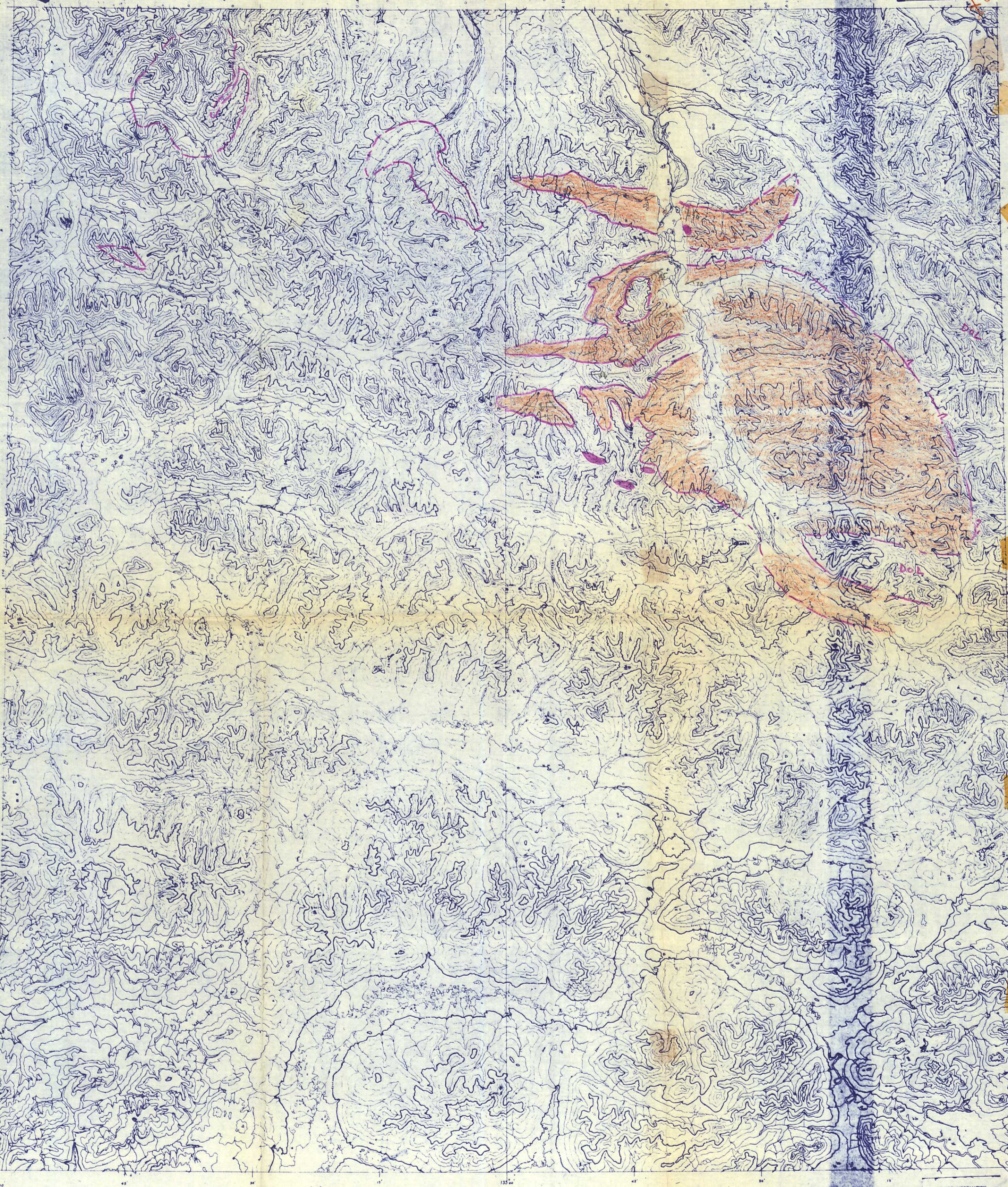
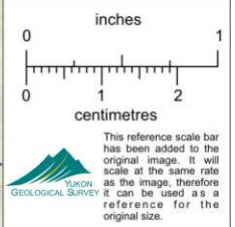


**NASH CREEK**  
YUKON TERRITORY  
SCALE 1 INCH = 2 MILES

ADVANCE INFORMATION  
SUBJECT TO REVISION

106-D  
106-D  
106-D

106-D



NASH CREEK  
YUKON TERRITORY  
SCALE 1 INCH = 2 MILES

ADVANCE INFORMATION  
SUBJECT TO REVISION



**THE DECLINATION OF THE COMPASS NEEDLE 1959**

The declination of the compass needle at any place along a broken line is the declination given on that broken line. At other places the declination is shown between these places or at the midpoint of the line between these places.

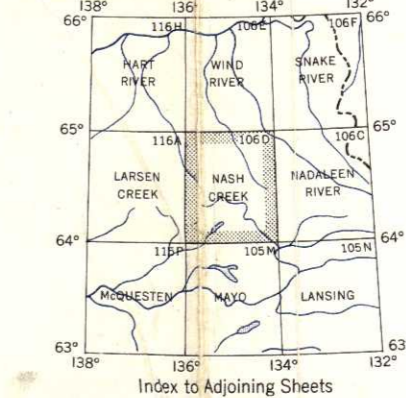
A. The declination is between 1900° and 1950° E. The declination of the compass needle is increasing 4½ minutes annually.

Produced and printed by the Survey and Mapping Branch, Department of Mines and Technical Surveys, 1957, from air photographs taken in 1949.

Universal Transverse Mercator Projection

Contour Interval 500 Feet  
Elevations in Feet above Mean Sea Level  
North American Datum 1927.

Copies may be obtained from the Map Distribution Office, Department of Mines and Technical Surveys, Ottawa, at 25 cents each.

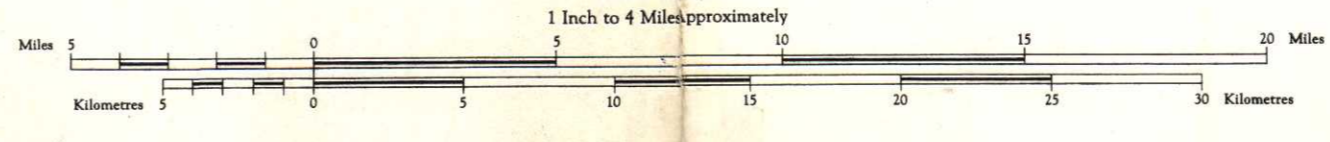


- REFERENCE**
- Wagon or water road.....
  - Trail or portage.....
  - Village or settlement..... O
  - Post office..... P
  - Building or cabin.....
  - Mine.....
  - Horizontal control point.....
  - Astronomical position.....
  - Spot elevation (in feet).....

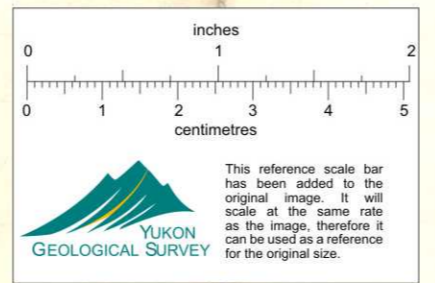
## NASH CREEK

### YUKON TERRITORY

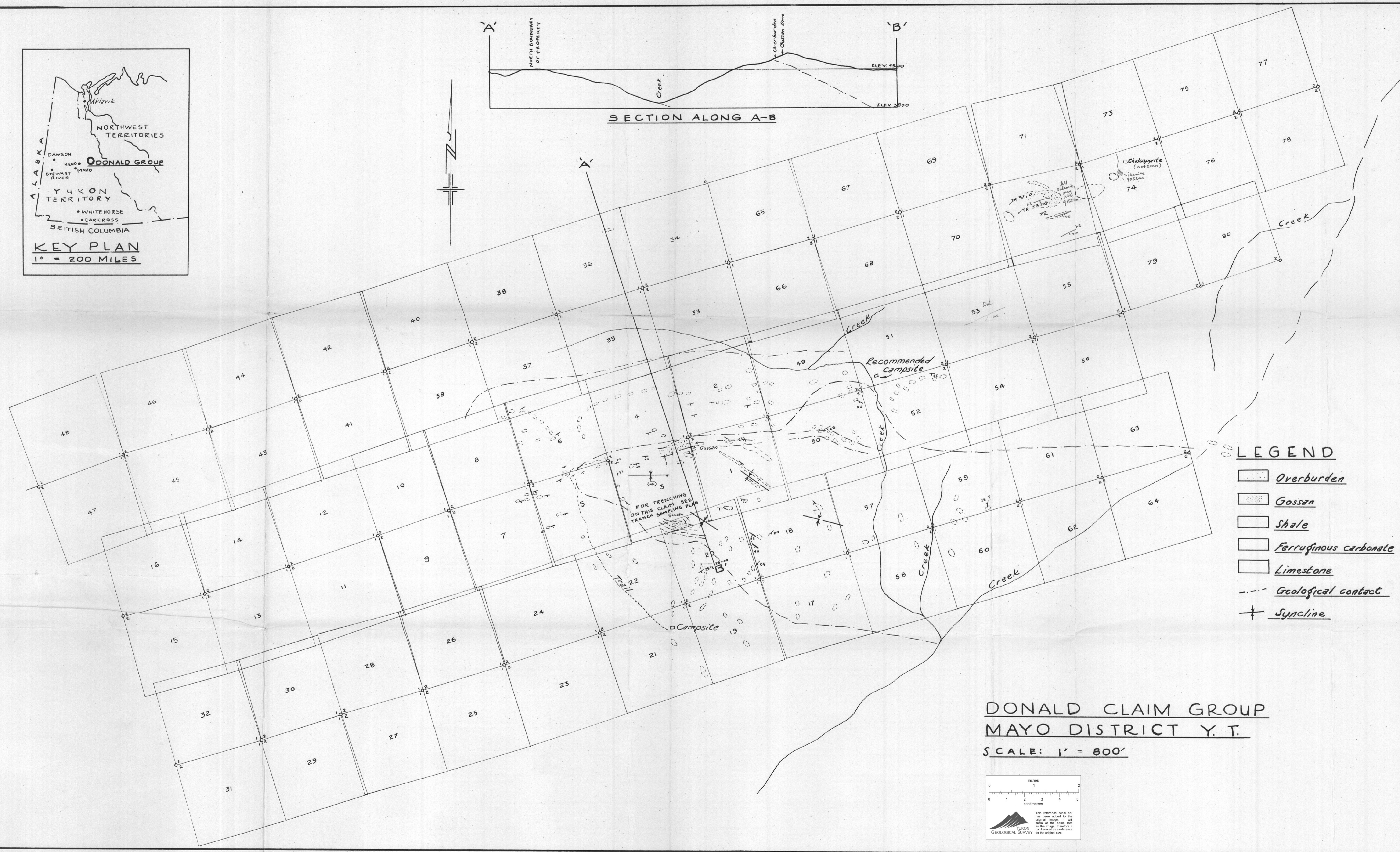
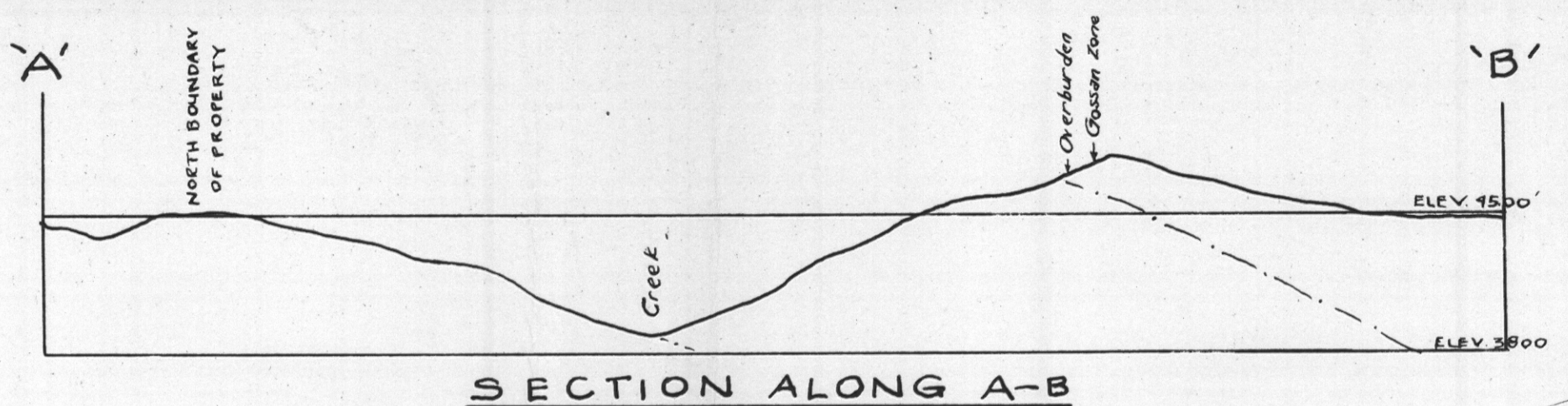
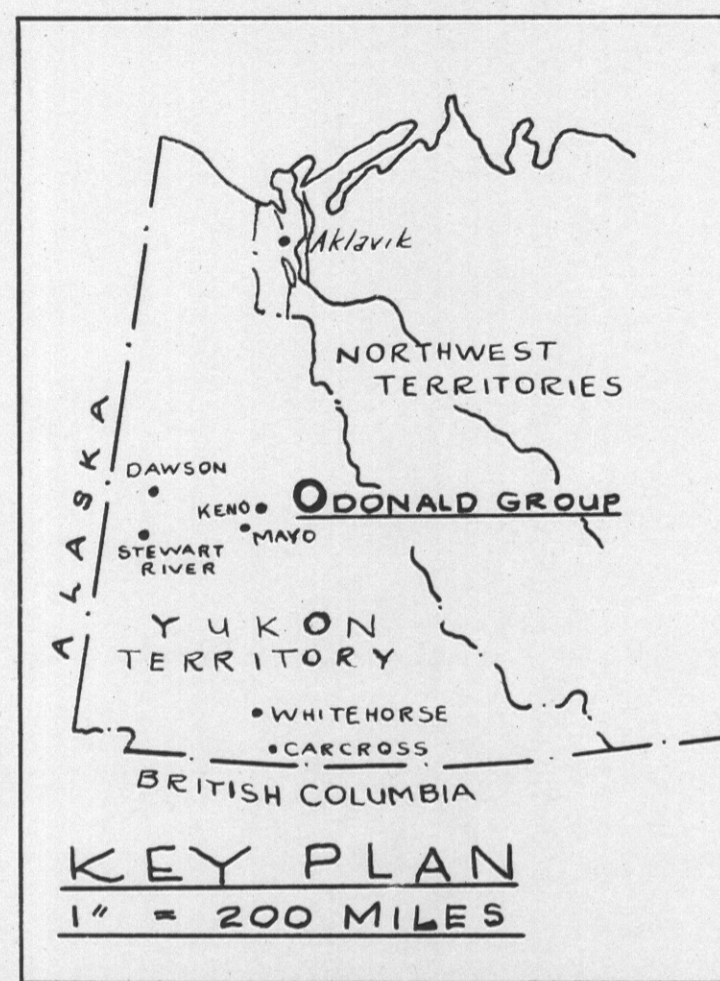
Scale 1:10,000  
1 Inch to 4 Miles (approximately)



- REFERENCE**
- Streams: intermittent or dry.....
  - Marsh or swamp.....
  - Rapids, falls.....
  - Contours: elevation.....
  - depression.....
  - approximate.....
  - Wooded areas.....

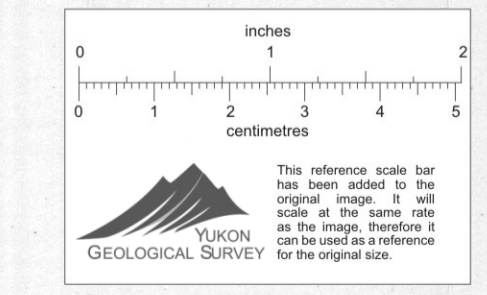


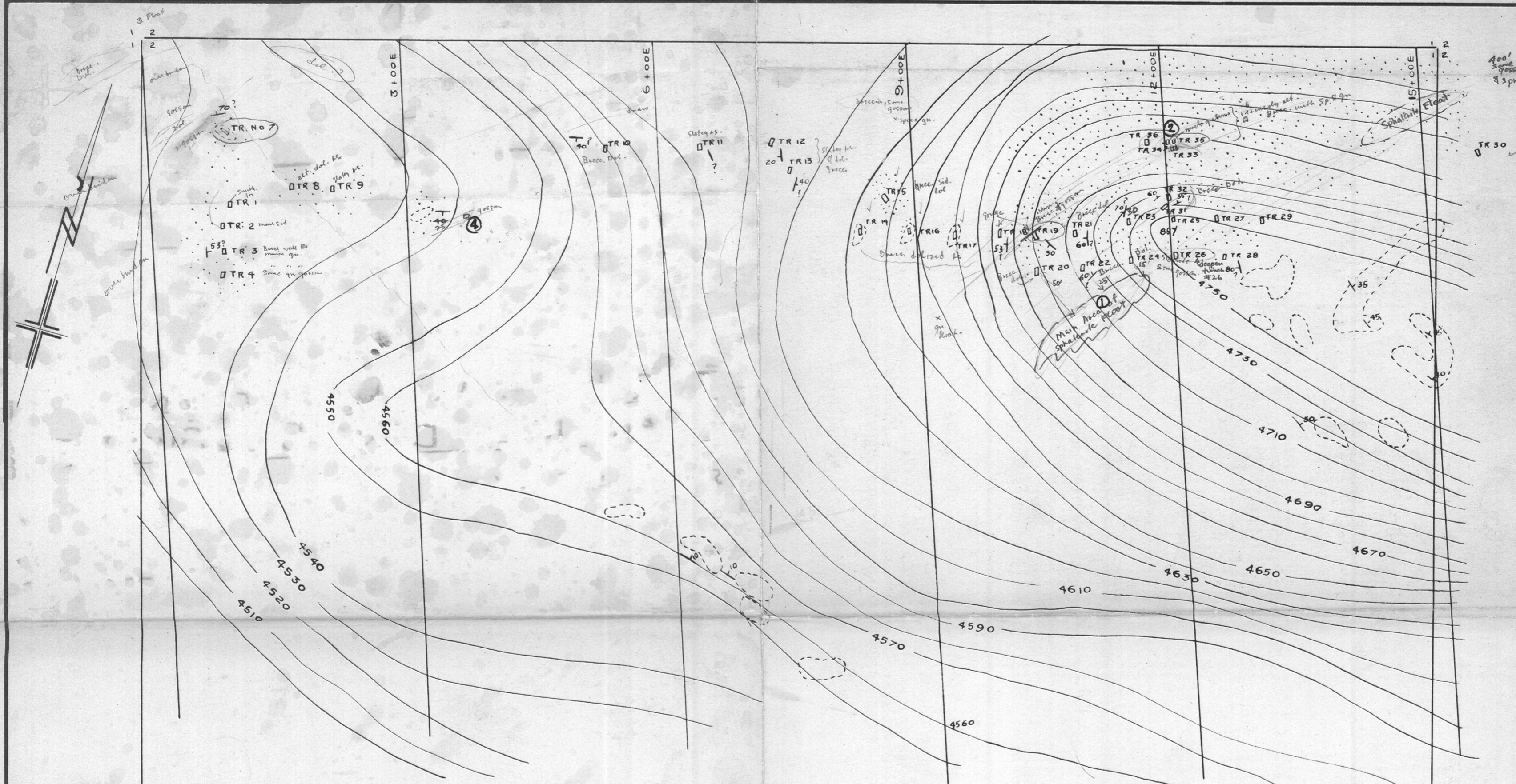
NASH CREEK 106D



- LEGEND**
- Overburden
  - Gossan
  - Shale
  - Ferruginous carbonate
  - Limestone
  - Geological contact
  - Syncline

**DONALD CLAIM GROUP**  
**MAYO DISTRICT Y. T.**  
**SCALE: 1" = 800'**





**TRENCH SAMPLING AVERAGE**

TRENCH NO.	%Zn	%Pb	Oz Ag
1	3.11	NIL	.16
2	3.42	NIL	.17
3	.40	.16	-
4	.35	.69	TR.
5	1.25	.03	.18
6	.05	.18	-
7	3.53	.70	1.74
8	1.35	NIL	-
9	NIL	"	-
10	"	"	-
11	"	"	-
12	"	"	-
13	NO MINERALIZATION		
14	"	"	-
15	.76	TR	-
16	NIL	NIL	TR
17	"	"	-
18	"	TR	TR
19	6.41	NIL	5.8
20	1.18	.05	TR
21	.17	NIL	-
22	2.00	.32	-
23	.31	NIL	-
24	.34	.04	.20
25	1.33	.80	TR
26	.51	NIL	"
27	1.02	.05	"
28	TR	1.00	.96
29	1.64	NIL	-
30	.80	"	-
31 & 32	2.94	1.63	4.56
33	1.74	TR	-
34	11.55	1.53	3.96
35	25.78	0.44	1.12
36	16.61	2.65	3.92
37	.10	NIL	TR
38	NIL	"	"
39	"	7.77	2.84

DTR 5  
DTR 6  
Peak ③  
P.M. Kavanagh.  
Asb. Corp. Samples  
in pencil  
(Permission of  
G. Dickson.)

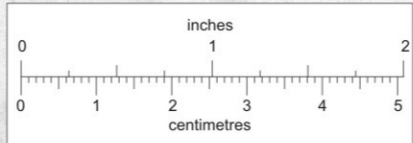
Smithsonite, pale Dr. Sp.  
Oxidized sid  
Well hole base.  
oxidized  
? gossan in place - some galena  
base - 1"  
? no bedrock, maybe det.  
chert  
5.8 ? on 0.58 ?  
chert w  
2' gauge, end of pit  
B.D. minor gossan.  
Frost, no BK.  
Bree. det with calcite, looks  
pretty min.  
Bree det. etc.  
Grab (damp) zinc  
Grab (damp) lead  
37 & 38  
TRENCHES 28 & 39  
IN EASTERN ZONE

**LEGEND**

- Overburden
- Gossan
- Shale
- Spot Elevation
- Trench
- Contours (Relative to Kathleen Lake at 3000)

**TRENCH SAMPLING PLAN  
CLAIM NO. 3 - DONALD GROUP-Y.T.**

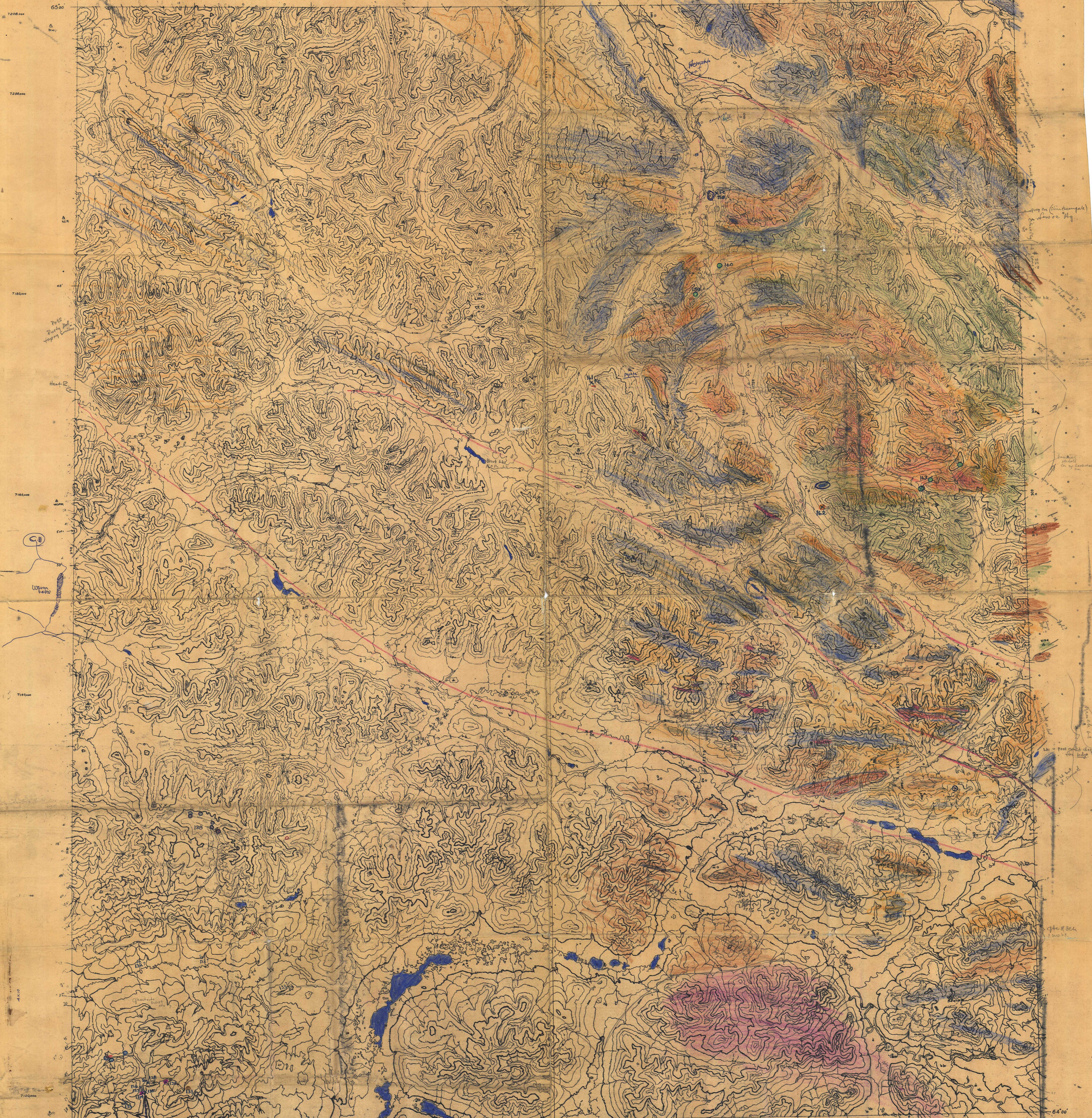
SCALE: 1" = 100'



106 D

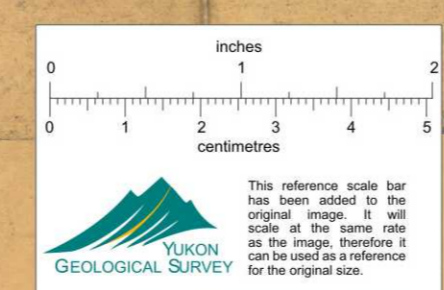
106-D

17



A1092

NASH CREEK  
YUKON TERRITORY  
SCALE IN H = 2 MILES



ADVANCE INFORMATION  
SUBJECT TO REVISION



Refer to this Map as: 106 D EDITION 1 ASE SERIES A502

### MINERAL SHOWINGS LOCATION MAP

**LEGEND:**

**LOOSE DEPOSITS**

- MINERAL PRODUCER (PAST, PRESENT OR FUTURE)
- PROSPECT
- MINERAL OCCURRENCE (SMALL OR NO INFORMATION AVAILABLE)

**COLOR CODE:**

- GOLD
- SILVER
- COPPER
- LEAD
- ZINC
- TUNGSTEN
- MOLYBDENUM
- IRON
- BARITE
- NICKEL
- ASBESTOS
- ANTIMONY

**PLACER DEPOSITS**

- GOLD
- TIN

GRID ZONE DESIGNATION	100,000 M. SQUARE IDENTIFICATION			
	8W	MH	NH	720
	MG	NG	710	
	MF	NF	710	
	50			

TO GIVE A REFERENCE TO NEAREST 1000 METRES

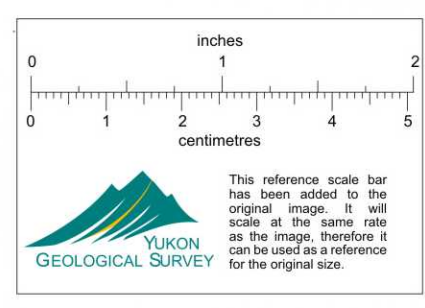
EXAMPLE: GOLD MINE

SQUARE	Read letters of 100,000 m square	MG
EASTING	Read number on grid line immediately to left of point	5
	Estimate tenths of a square from this line eastward to point	9
NORTHING	Read number on grid line immediately below point	0
	Estimate tenths of a square from this line northward to point	1
MILITARY GRID REFERENCE	MG5901 (to nearest 1,000 metres)	01

(If reporting beyond 18° in any direction prefix Grid Zone Designation as: 8WMG5901)

TEN THOUSAND METRE  
UNIVERSAL TRANSVERSE MERCATOR GRID  
ZONE 8

THE DECLINATION OF THE COMPASS NEEDLE 1955



The declination of the compass needle at any place along a broken line is the declination given on that broken line. At other places the declination is between those given on the neighbouring broken lines; thus, at the place marked A, the declination is between 33°00' E. and 33°30' E. The declination of the compass needle is decreasing 4½ minutes annually.

Produced and printed by the Surveys and Mapping Branch, Department of Mines and Technical Surveys, 1957, from air photographs taken in 1949.

Universal Transverse Mercator Projection

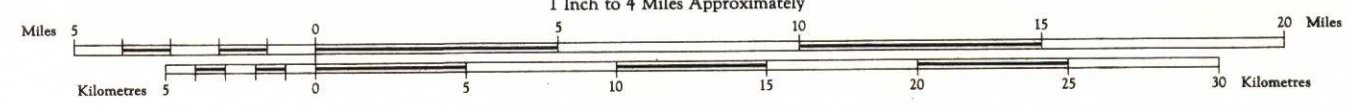
Contour interval 500 Feet  
Elevations in Feet above Mean Sea Level  
North American Datum 1927.

**REFERENCE**

- Wagon or winter road
- Trail or portage
- Village or settlement
- Post office
- Building or cabin
- Mine
- Horizontal control point
- Astronomical position
- Spot elevation (in feet)

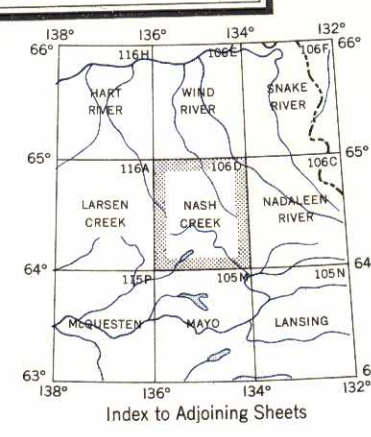
## NASH CREEK YUKON TERRITORY

Scale 1:250,000  
1 Inch to 4 Miles Approximately



**REFERENCE**

- Streams: intermittent or dry
- rapids
- Rapids, falls
- Marsh or swamp
- Contours: elevation
- depression
- approximate
- Wooded areas



NASH CREEK  
106D  
EDITION 1 ASE



Refer to this map as: 106 D EDITION 2 ASE SERIES A 502

UNIVERSITY OF TORONTO  
TRANSVERSE MERCATOR GRID  
ZONE 8



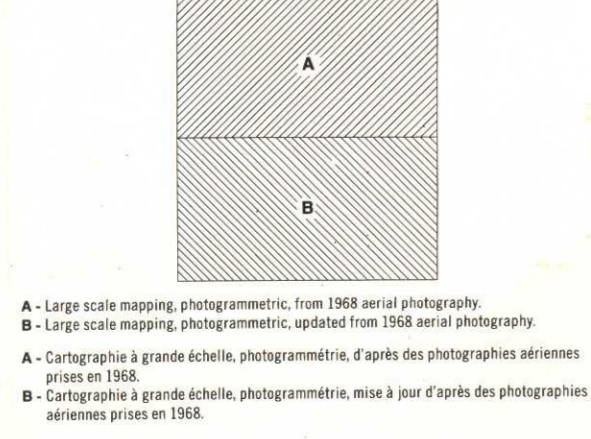
SCALE OF METHOD USED  
 REFERENCE TO NEAREST 1000 METRES  
 1:250,000



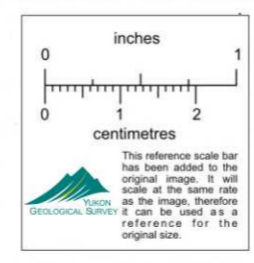
EXAMPLE MILITARY GRID REFERENCE: NUS404  
 If reporting "NU" in any direction, prefix Grid Zone Designation as: 15VNU5404

*R. 90.0 m. Def. Keene T. Unit 2 S/Bl...*

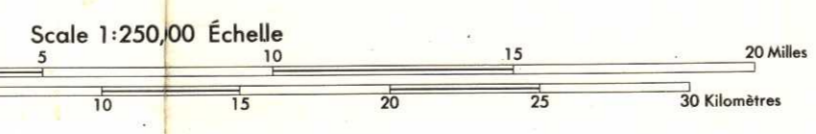
RELIABILITY DIAGRAM - CROQUIS D'EXACTITUDE



Produced 1972 by the SURVEYS AND MAPPING BRANCH, DEPARTMENT OF ENERGY, MINES AND RESOURCES, from large scale maps. Printed 1973.  
 Magnetic declination 1972 varies from 34°32' westerly at centre of west edge to 34°27' westerly at centre of east edge. Mean annual change 4.7' westerly.



NASH CREEK  
 YUKON TERRITORY



CONTOUR INTERVAL: 500 FEET  
 Elevations in feet above Mean Sea Level  
 North American Datum 1927  
 Transverse Mercator Projection  
 Copies may be obtained from the Canada Map Office, Department of Energy, Mines and Resources, Ottawa, or your nearest map dealer.  
 © Canada Copyrights Reserved 1973

Établi en 1972 par la DIRECTION DES LEVÉS ET DE LA CARTOGRAPHIE, MINISTÈRE DE L'ÉNERGIE, DES MINES ET DES RESSOURCES, d'après des cartes à grande échelle. Imprimé en 1973.  
 La déclinaison magnétique pour 1972 varie de 34°32' Est au centre de la limite Ouest à 34°27' Est au centre de la limite Est. Variation moyenne annuelle 4,7' Ouest.

Routes:  
 graver aggloméré, toute saison ..... 2 voies ou plus ..... moins de 2 voies  
 de graver période sèche .....  
 de terre .....  
 sentier ou portage .....

POUR UNE LISTE COMPLÈTE DES SIGNES, VOIR AU VERSO

