

CYPRUS ANVIL MINING CORPORATION

SEDIMENTARY ENVIRONMENTS PROJECT

GRIT UNIT IN OGILVIE MOUNTAINS

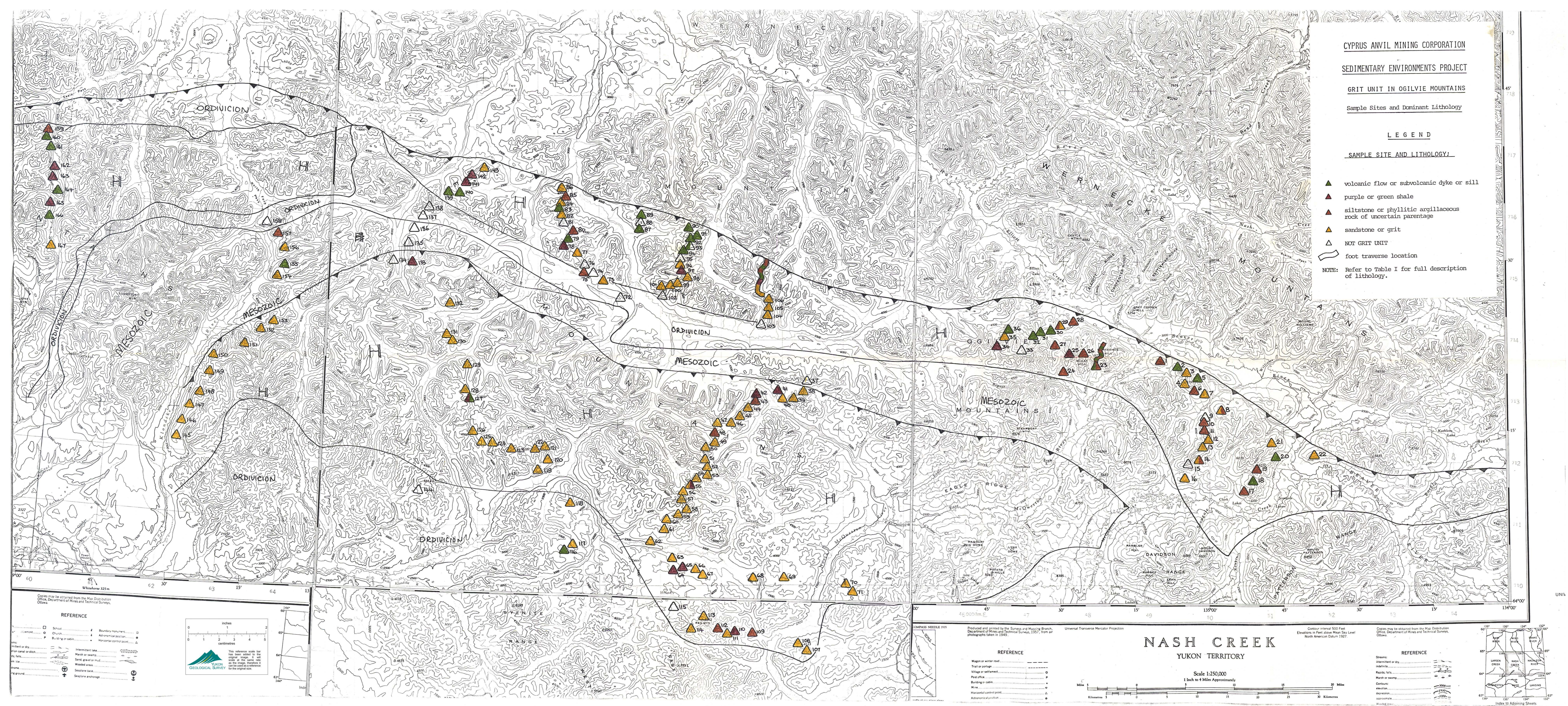
Sample Sites and Dominant Lithology

LEGEND

SAMPLE SITE AND LITHOLOGY:

- ▲ volcanic flow or subvolcanic dyke or sill
- ▲ purple or green shale
- ▲ siltstone or phyllitic argillaceous rock of uncertain parentage
- ▲ sandstone or grit
- △ NOT GRIT UNIT
- foot traverse location

NOTE: Refer to Table I for full description of lithology.



Copies may be obtained from the Map Distribution Office, Department of Mines and Technical Surveys, Ottawa.

**REFERENCE**

□ School	○ Boundary monument
○ Church	○ Adirondack location
○ Building or cabin	○ Horizontal control point
○ Well or dry	○ Interim lake
○ Canal or ditch	○ Marsh or swamp
○ Sand, gravel or mud	○ Wooded area
○ Mine	○ Seaplane base
○ Ground	○ Seaplane anchorage

This reference scale has been added to the original image. It will not be used as a reference for the original size.

Copies may be obtained from the Map Distribution Office, Department of Mines and Technical Surveys, Ottawa.

**REFERENCE**

— Wagon or winter road	— Trail or portage
— Village or settlement	— Post office
— Building or cabin	— Mine
— Horizontal control point	— Adirondack location

Produced and printed by the Survey and Mapping Branch, Department of Mines and Technical Surveys, 1971, from an photographs taken in 1949.

Universal Transverse Mercator Projection

Scale 1:250,000  
1 Inch to 4 Miles Approximately

Copies may be obtained from the Map Distribution Office, Department of Mines and Technical Surveys, Ottawa.

**REFERENCE**

— Stream	— Contour
— Rapid falls	— Depression
— Marsh or swamp	— Depression
— Contour	— Depression
— Contour	— Depression
— Contour	— Depression

Contour interval 500 Feet  
Elevations in Feet above Mean Sea Level  
North American Datum 1927

**NASH CREEK**  
YUKON TERRITORY

Scale 1:250,000  
1 Inch to 4 Miles Approximately

