

070
 170
 169
 891 -
 169 -
 166 -
 165 -
 164 -
 163 -
 162 -
 161 -
 160 -
 159 -
 158 -
 157 -
 156 -
 155 -
 154 -
 153 -
 152 -
 151 -
 150 -
 149 -
 148 -

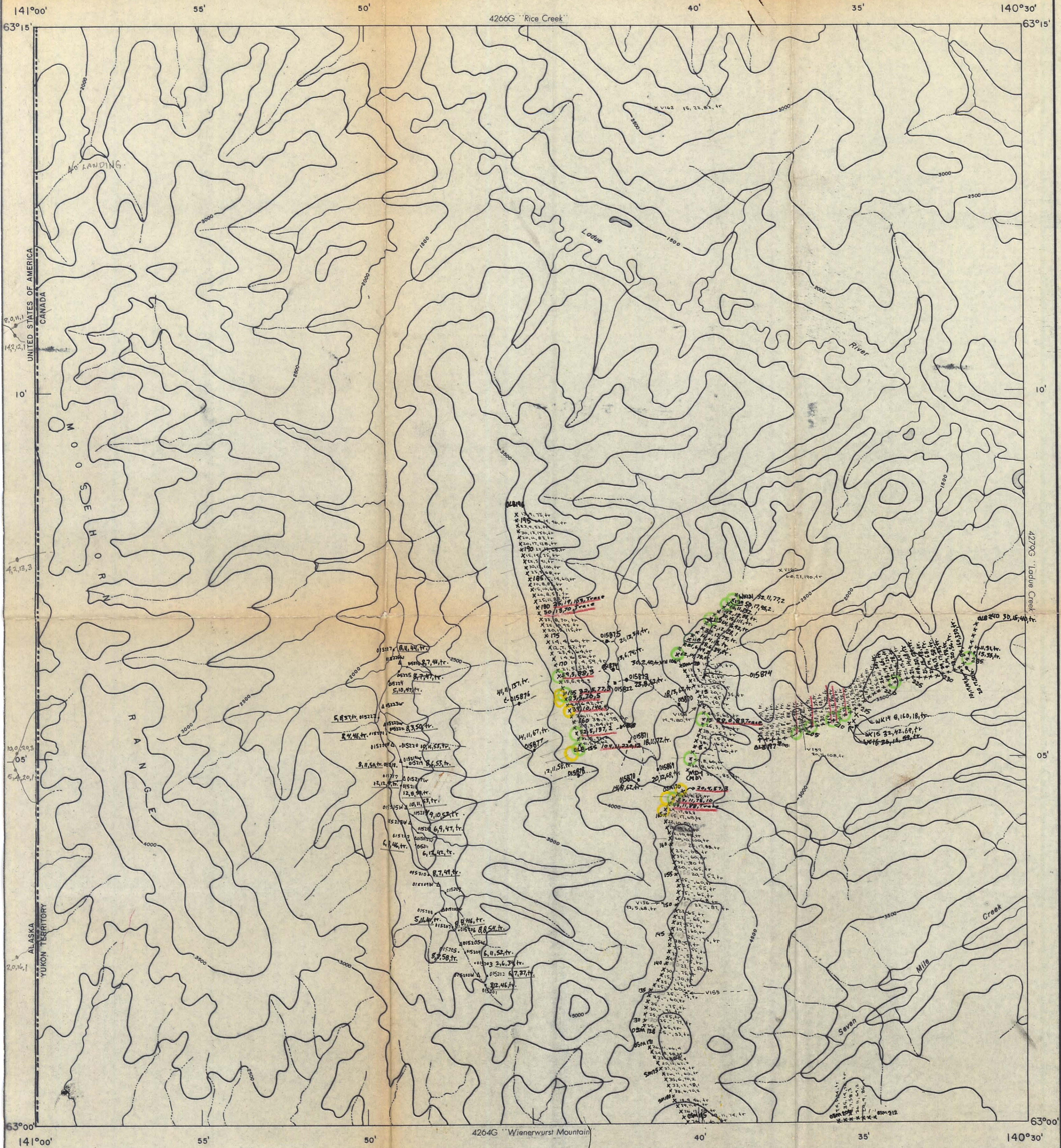
PICKUP



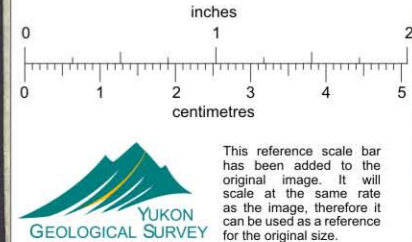
SAMPLE No. <u>OSM-128</u> to <u>OSM-170</u>		
N.T.S. <u>115 N2</u>		
PHOTO <u>12061-13</u>		
SAMPLER <u>S. McCloud</u>		
PROJECT: <u>OK</u>		
SCALE		
DATE: <u>21 MAY 1970</u>		
GEOGRAPHIC LOCATION: <u>NW of 7 mi. Cr.</u>		
SHEET <u>2</u> of <u>2</u>	DATE	INIT'L
SAMPLE LOC PLOTTED	<u>4/10</u>	<u>WMD</u>
VALUES "		
GEOLOGY "		
REMARKS:		

7 mile ck
 3 miles

S McCloud
 115-N-2



4279G "Lodge Creek"



PUBLISHED, 1966

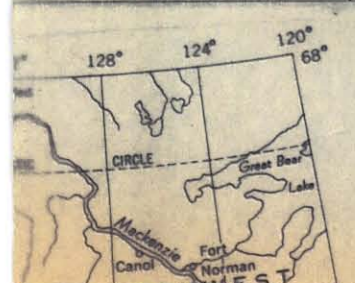
MAP 4265 G

GEOCHEM

012768

115 $\frac{N}{2}$

YUKON TERRITORY



ISOMAGNETIC LINES (absolute total field)

500 gammas

100 gammas

Magnetic survey, July to October 1965, by [unreadable] Inc.

No correction has been made for regional variation

The magnetic data on this map were compiled from information recorded along the flight lines shown. The anomalies expressed by the magnetic contours are dependent on the variable magnetic intensities of the underlying rocks, and may be due to conditions near, or at unknown depths below the surface. High magnetic anomalies normally indicate the presence of basic rocks, such as diabase, gabbro, or basaltic which