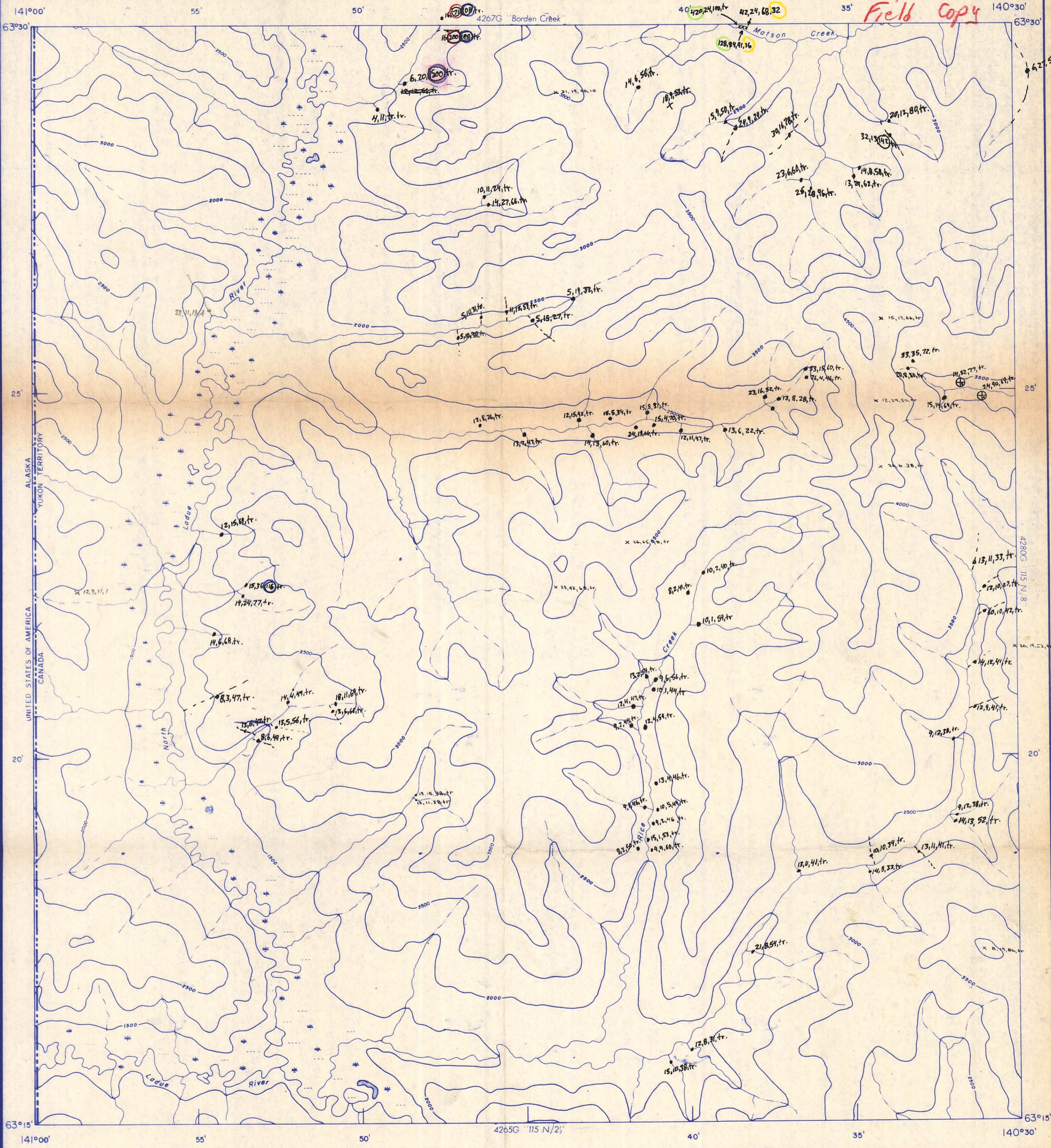
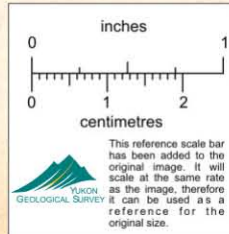


*GEOCHEM
Field Copy*



MAP 4266 G

RICE CREEK YUKON TERRITORY



Magnetic survey, July to October 1965 by Aero. Photo. Inc.

012778

The magnetic data on this map were recorded along the flight lines shown. The magnetic contours are dependent on the velocity of the underlying rocks, and may be due to depths below the surface. High magnetic

ISOMAGNETIC LINES (absolute, total field)

500 gammas



PUBLISHED 1966

GEOCHEM 115 N/7