

<u>No.</u>	<u>Description</u>
MDR 23	fine-gr. leuco gte
017040	pink gte
> 22	greenish, rusty, felsite porph.
MDR 24	= MDR 23
> WE R 25	gray bio. granite porph.
" "	leuco gte & rusty cavities
WE 41	divite & ophitic texture
WE R 26	bio. gte greis
WE R 42	hornfels & py
WE R 38	hornfels
WE R 43	" & py
-37	hornfels
-40	" & py
-44	" " "
-54	mica schist
-57	pink felsite porph.
-55	felsite porph hybrid & chlorite
-58	gray felsite
-53	hornfels
-51	"
-52	"
-34	massive felsite (pink) & py
-39	cherty felsite - gte porph breccia
-35	light gray hornfels & py
-36	hornfels
-34	musc gtz sch. & py - some hornfels as well & much py
-33	gray hbd porph.
-31	hornfels
-24	gray gte porph.
-32	hornfels & py
-28	" " "
-30	musc. gtz sch. & py

<u>Nb</u>	<u>Description</u>
WER - 58	pink felsite porph.
017033	hornfels & much py
017036	hornfels
017039	"
OMD R18	green-gray hornfels
RO 17036	hornfelsic gte porph & py -
MDR26 -	bio gte hybrid - foliated
MD15 -	gray granite porph.
MD19 -	green-gray hornfels

RICE CREEK FLY CAMP

JUNE 8 To June —

Mike Delichand Walter Hamilton

115N7

GEOCHEMISTRY

1" = 1 mile





June 10

T-017001

T-017002

T-017003

T-017004

T-017005

T-017006

T-017007

T-017008

X-R-MDR 14

RICE
CREEK

1 1/2 mile →

NORTH LADUE

RIVER

← 6 mile

XCamp

NOTES

R017003 - pyrite in a qtz. associated with a light brown feldspar porphyry

017004 - ultramafic, actinolite in a gneiss

017009 - pyrite in a qtz vein, associated with a granite

MDR 14 - light pink br. granite

at 017001, Yukon schist and gneiss, with a marked increase to a porphyritic granite at 017008.

also minor feldspar, and some epidote in qtz, or peg.

115N7
M. DELICH
JUNE 10, 1970

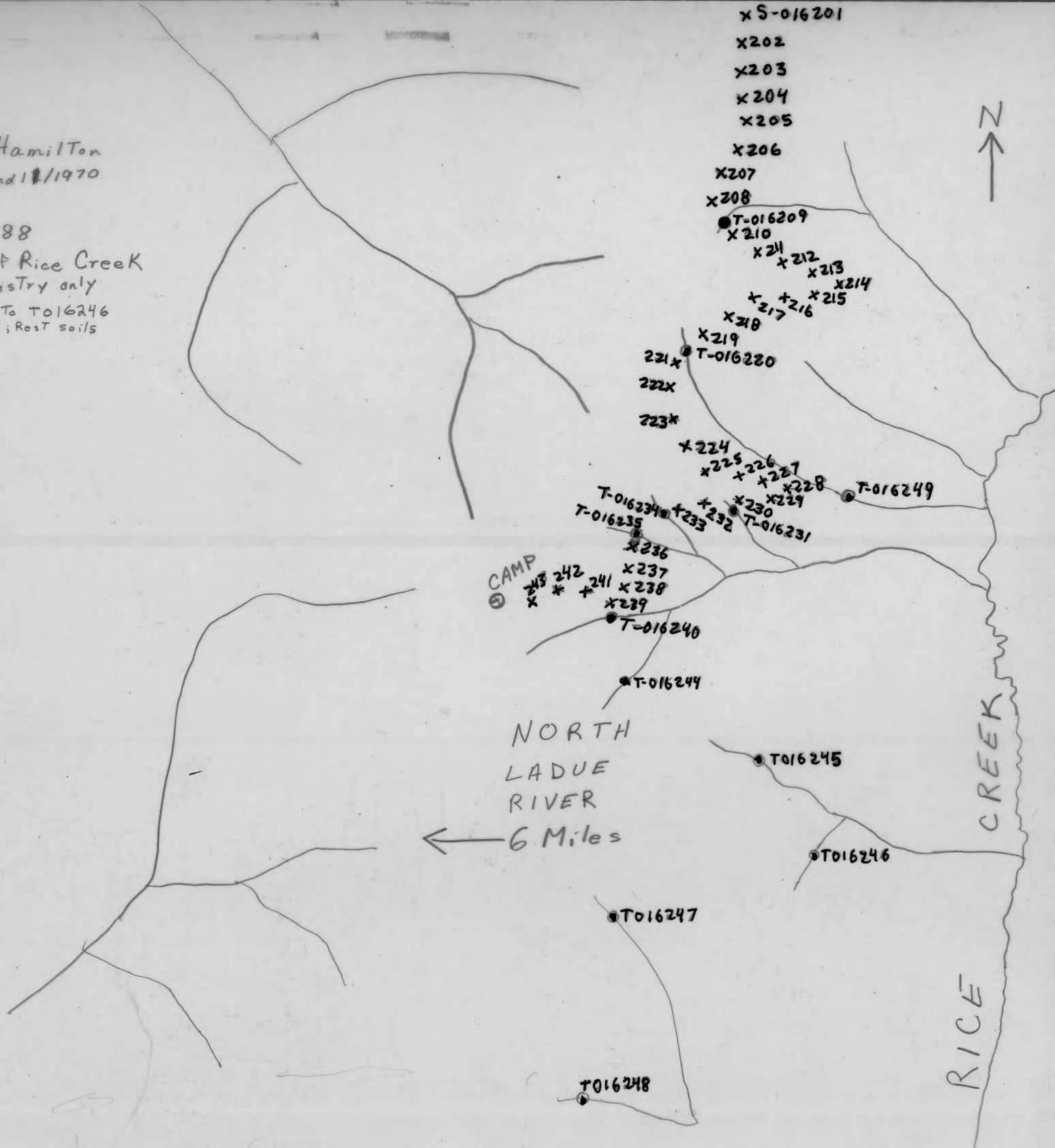
A1226-89

Rice Creek

Walter Hamilton
June 10 and 11/1970

115N7
A12267-88

1/2 mile W. of Rice Creek
Geochemistry only
S-016201 to T016246
NOTE: 12 soils; Rest T soils





sheet B36
schist
Por. Gr.
Por. Gr.
Por. Gr.
Gr. R35 Qzite
Gr. CAMP
Gr.
Gr.

Py in
alteration rock
+ m. g. s.
& Gr.
R33
Gr.
Gr.

m.g.s. →

S. 135°
D. 20°N → m.g.s.
m.g.s.

R32. qzites
& shs.

R31. m.g.s. R27

R30. m.g.s.
Py in qz. and rock.

R29. Gr.

R28
Py in Qz. m.g.s.
bio. shs. S. 190°
D. 70°E

m.g.s.

m.g.s.

.Gr .Gr .Gr
.R26 musc.
qtz shs.
VER25-Gr

Rival ribbon A 5503. Soil Samp'

musc. qtz shs

T016244 - Gr

T016245

→ musc. shs. fl. & Gr. fl.

→ fl.
Gr. & musc. shs. fl.

T016246

T016247

T016248

WE: R16 → R20 incl

5016201
X5016202
X5016203
X5016204
X5016205
X5016206
X5016207

TO16209

X208
X5-016210
X211 X212 X213
X214
X215
X216
X217
X218
X219
X220
X221
X222
X223
X224

T-016220

S-016221

R20

P76
amph. qtz
sch. + f. c.
amph. c.
T-016234
X230
X231
X232
X233
X234
X235
X236
X237
X238
X239
T-016240

+Camp

T-016240

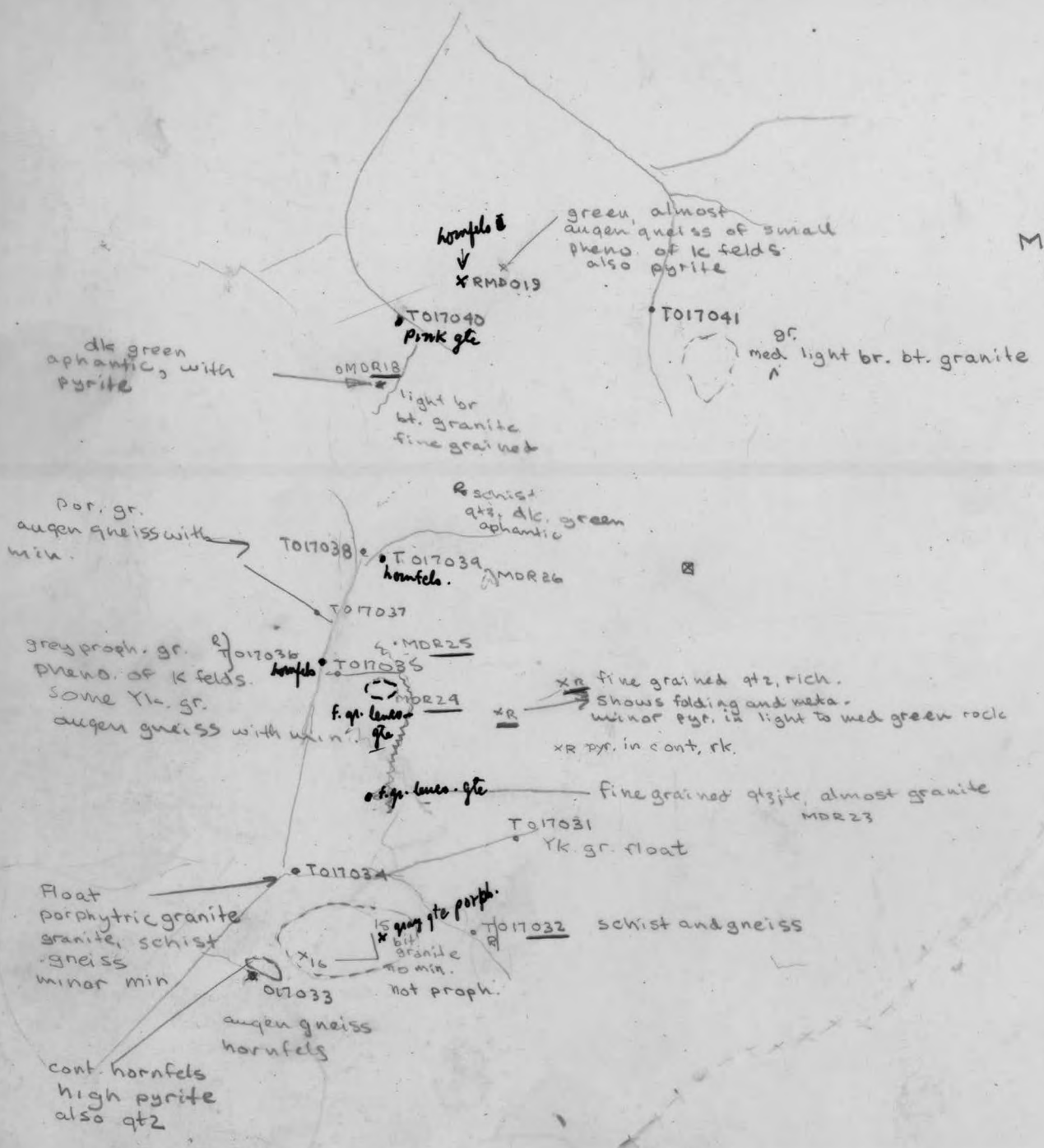
Silt #'s

209
220
231
234
235
240

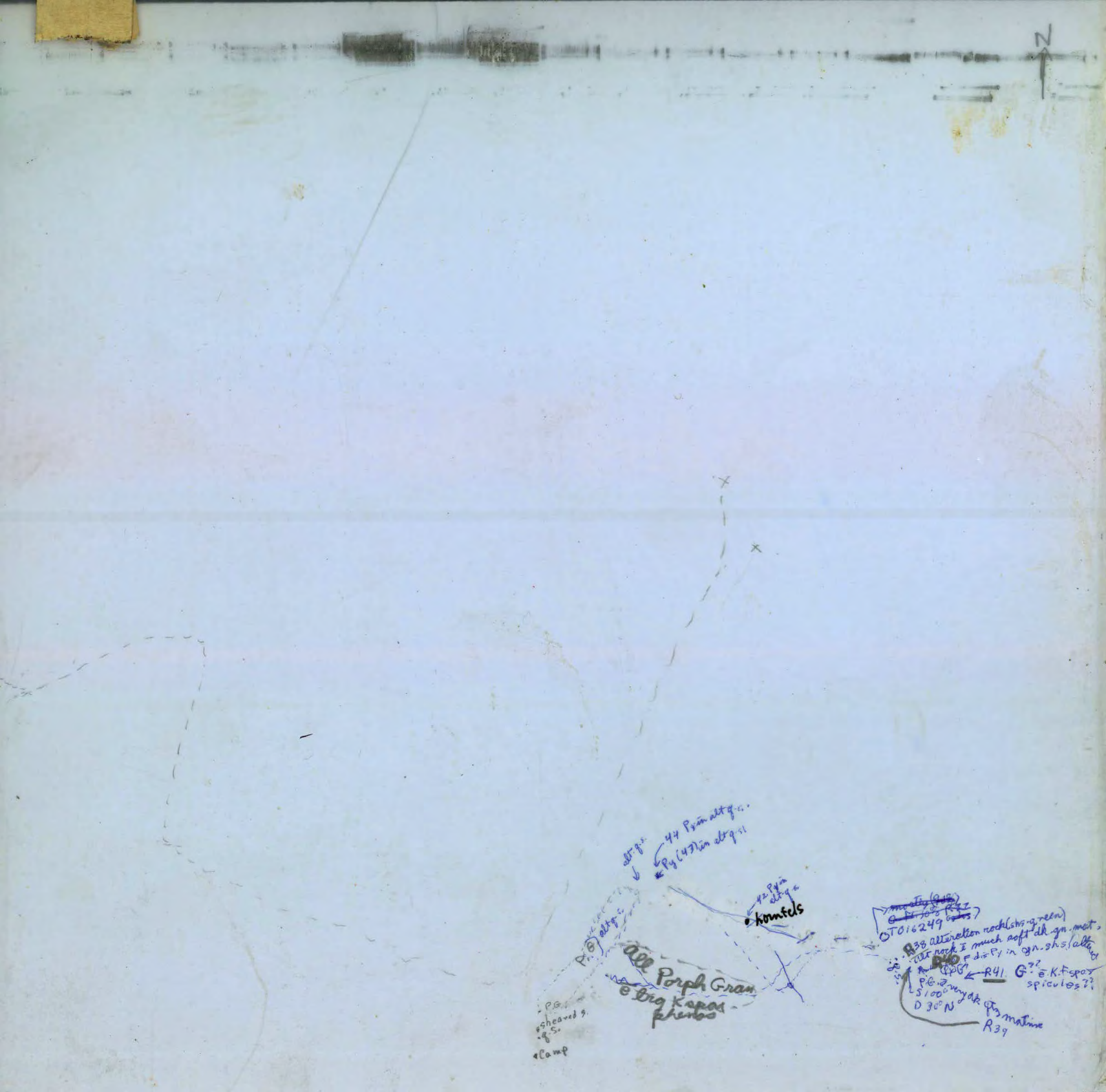
RICE CREEK



M. Delich
 June 11 1970
 Rice Creek
 115N7
 A 12267-88



N



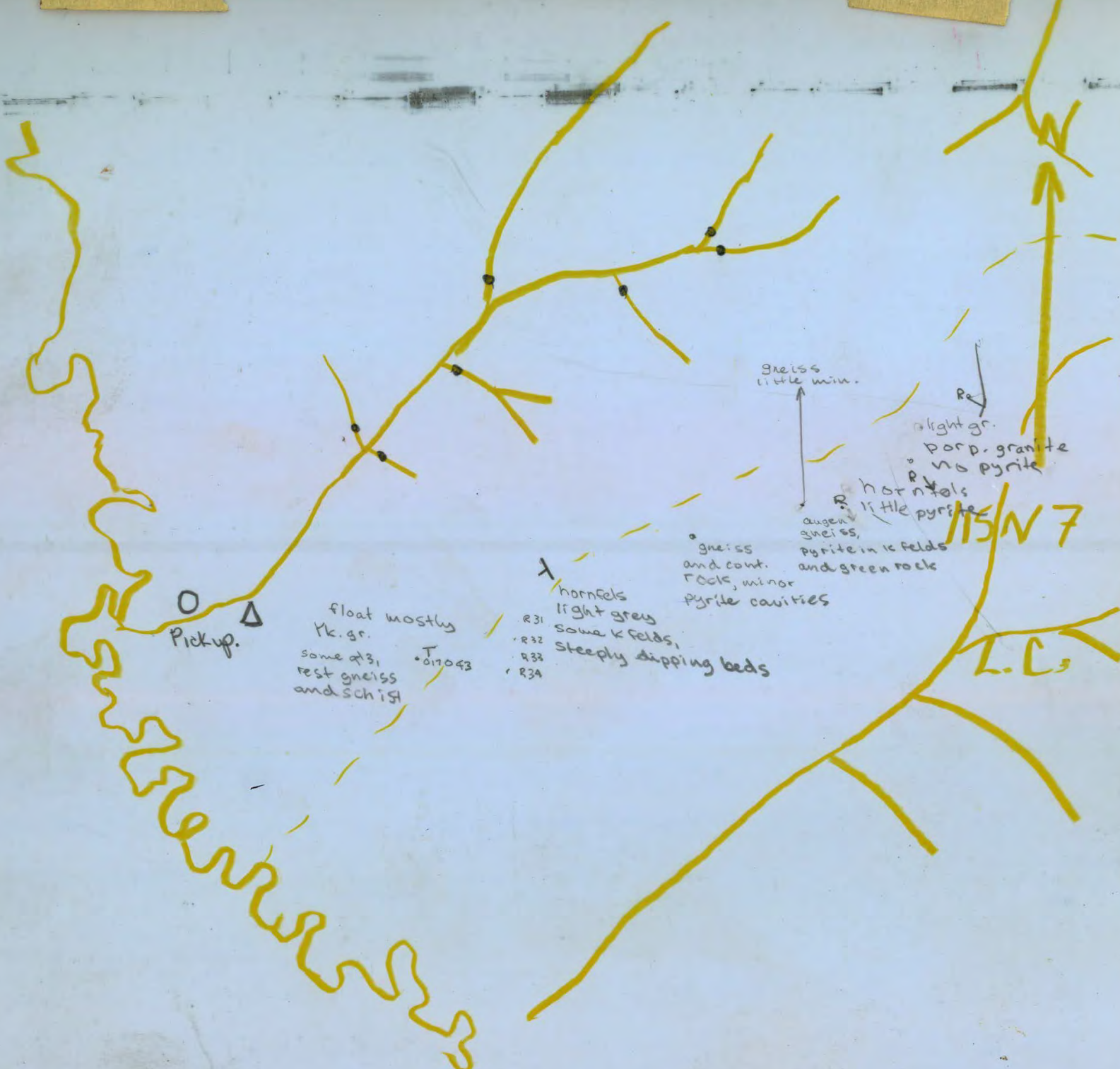
44 Prim alt q. n.
 42 P. n. alt q. n.

kontels

all Porph Gran
 e big Kapas phos

OT016249
 R33 alteration rock (shs green)
 alt rock & much soft dk gn. mat.
 F. sh. in gn. shs / alt
 R41 G. K. spox spiculos??
 D 30° N
 R39

Camp



○
△
Pick-up.

float mostly
Yk. gr.
some at R31
rest gneiss
and schist

T 017043

- R31
- R32
- R33
- R34

hornfels
light grey
some K felds,
steeply dipping beds

gneiss
and cont.
rocks, minor
pyrite cavities

gneiss
little min.

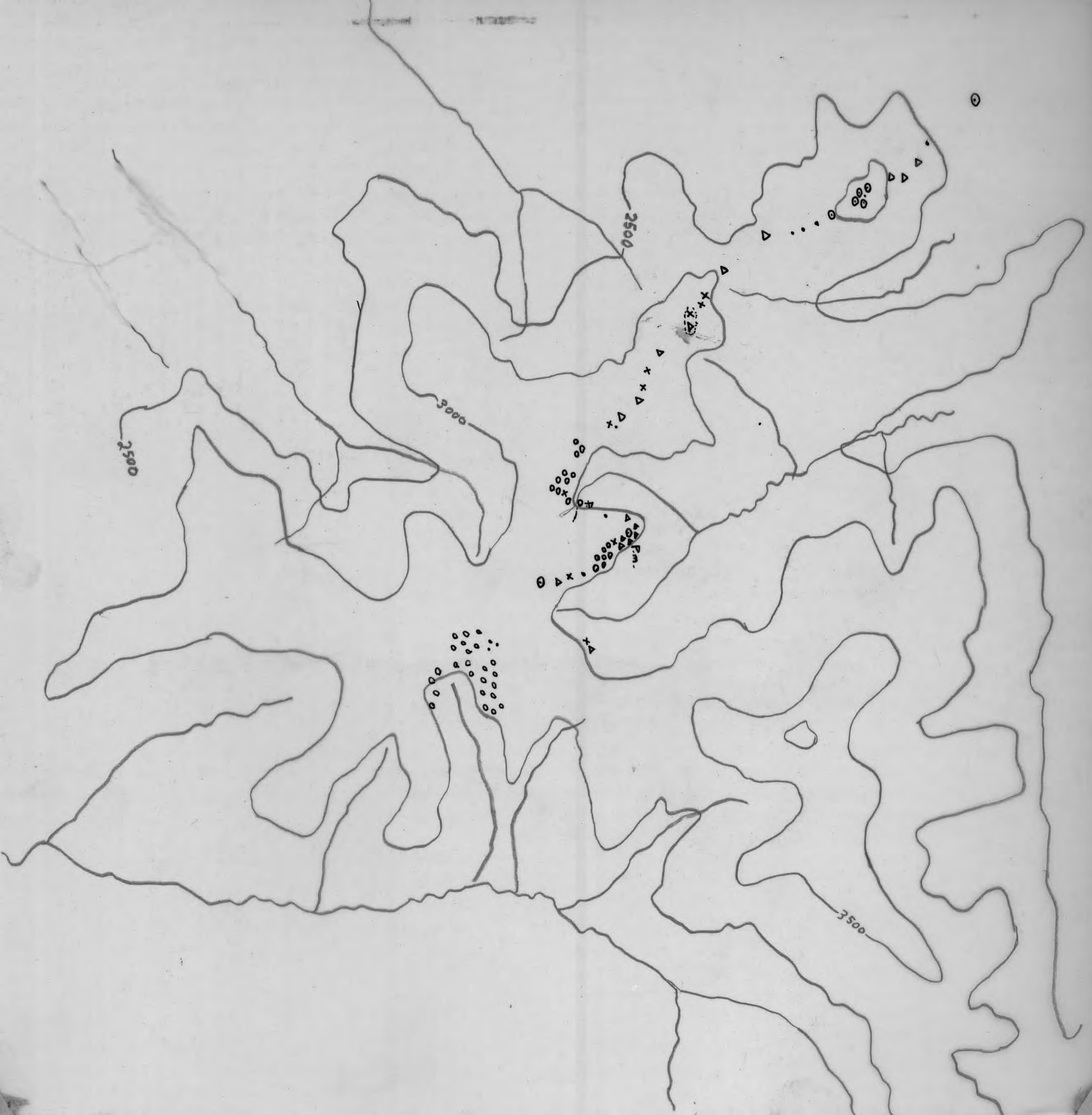
augen
gneiss,
pyrite in K felds
and green rocks

hornfels
little pyrite

light gr.
porp. granite
no pyrite

N7

L.C.



PRELIMINARY REPORT OF GEOLOGY OF RICE CREEK AREA (ON 1 MILE MAP) JUNE 9

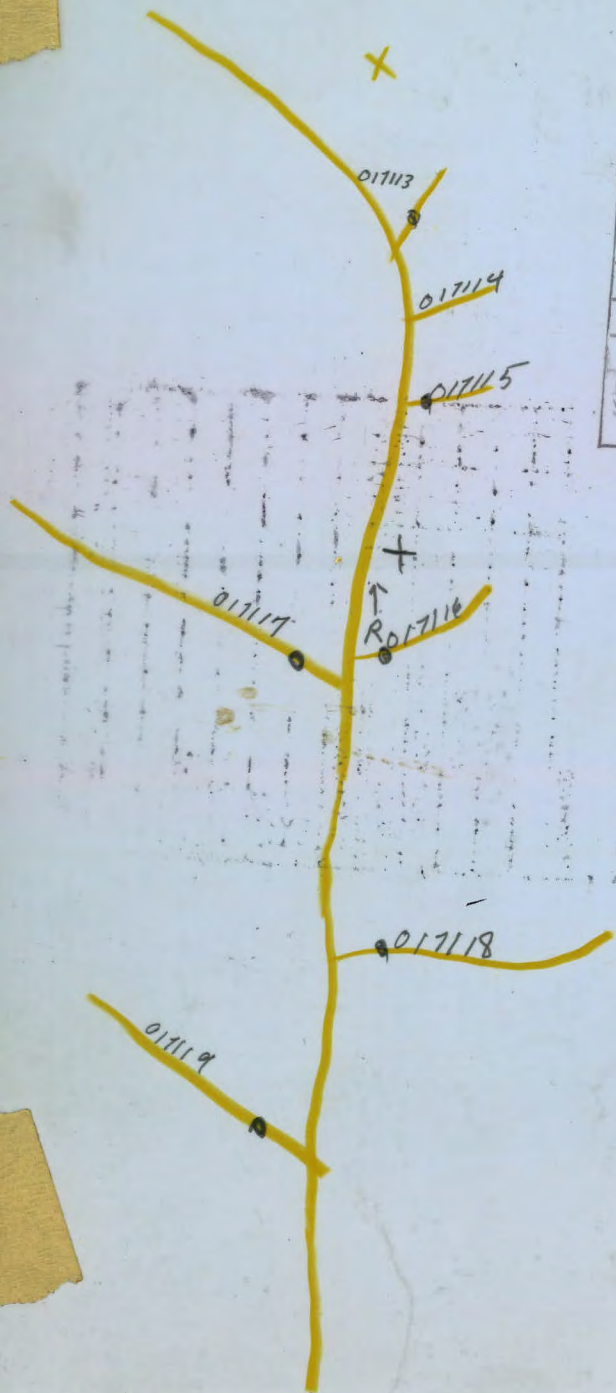
LEGEND

- ||||| = Metamorphic rocks (Non Granite)
- ≡ = Granitic rocks
- - - = Contact
- = Mineralization



①

SAMPLE No	017113	017119
N.T.S.	115N7	
PHOTO	12043-54	
SAMPLER	L.C.	
PROJECT:	V.OEX	
SCALE:		
DATE:	12 June '70	
GEOGRAPHIC LOCATION:	Rice Cr.	
SHEET	1	of 4
SAMPLE LOC PLOTTED		Wtd.
VALUES "		
GEOLOGY "		
REMARKS:		



L.C.
115N7

GEOLOGY

PRELIMINARY REPORT OF THE GEOLOGY IN RICE CREEK FLY CAMP AREA - JUNE 9



Rice Creek Ex

MDR 26 gneiss bio. qtz & py

MDR 39 Hornfels

MDR 36 Hornfels & py

017033 beccated hornfels

MDR 16 bio. granite porph

MDR 18 hornfels.

MD 15 granite porph & py

017036 granite porph.

MD 19 hornfels

017040 leuco granite

MDR 23 granite porph.

MD 22 rusty greenish porph

MDR 24 leuco granite

MDR 25 hornfels

" 21 "

WER 41 diorite & ophitic texture

WE 25 leuco granite