

NOTICE

THIS MAP IS ISSUED AS A PRELIMINARY GUIDE FOR WHICH THE DEPARTMENT OF NORTHERN AFFAIRS AND NATIONAL RESOURCES WILL ACCEPT NO RESPONSIBILITY FOR ANY ERRORS, INACCURACIES OR OMISSIONS WHATSOEVER ON THE SHEET BEFORE ADEQUATE SURVEYS HAVE BEEN MADE.

SHEET 115-N-15

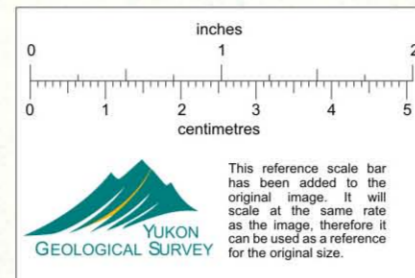
LATITUDE 63°45' To 64°00'
LONGITUDE 140°30' To 141°00'

CANADA
DEPARTMENT OF NORTHERN AFFAIRS AND NATIONAL RESOURCES
NORTHERN ADMINISTRATION BRANCH
RESOURCES DIVISION

SCALE: 1/2 MILE TO 1 INCH



ISSUED UNDER THE AUTHORITY OF THE MINISTER OF NORTHERN AFFAIRS AND NATIONAL RESOURCES

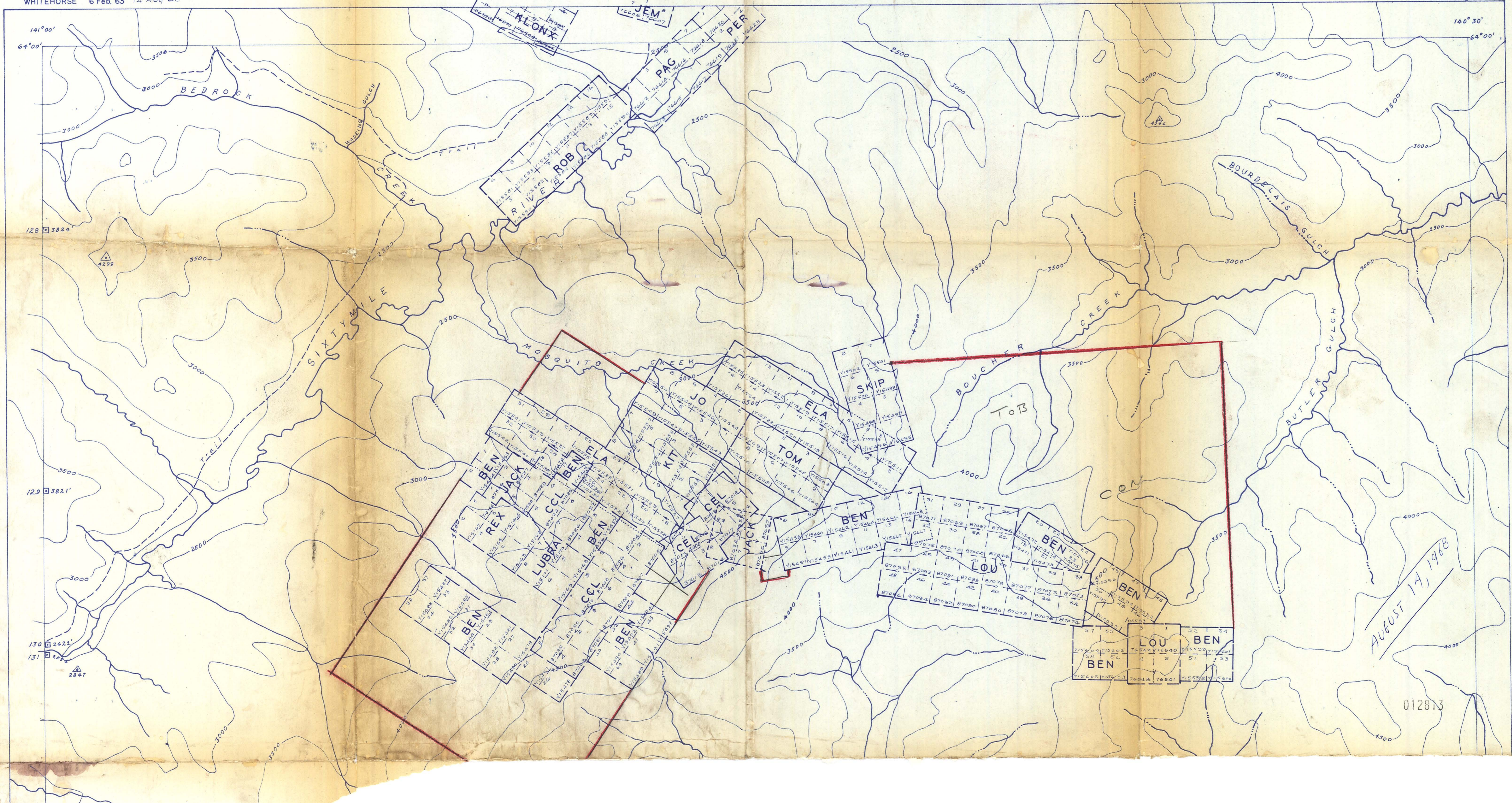


A L A S K A	116-C-2	116-C-1
	115-N-15	115-N-16
A L A S K A	115-N-10	115-N-9

FOR PLACER SEE 115N-15PLACER

PRICE 25 CENTS

WHITEHORSE 6 Feb. 63
3 Oct. 68
12 Sept. 68
9 Sept. 68
5 Sept. 68
26 Aug. 68
14 Aug. 68



AUGUST 14, 1968

012813