

*Proctor, Cluff & Co.  
Map.  
115-N-16.*

# SHEET 115-N-16

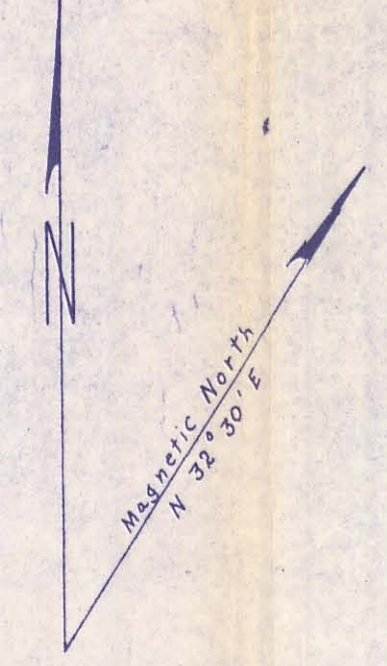
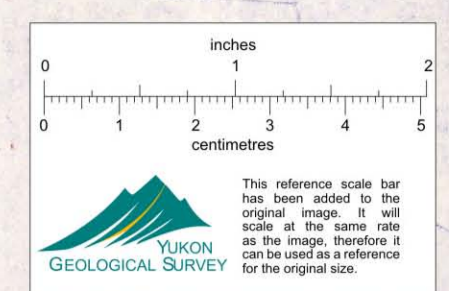
LATITUDE 63° 45' TO 64° 00'  
LONGITUDE 140° 00' TO 140° 30'

CANADA  
DEPARTMENT OF NORTHERN AFFAIRS AND NATIONAL RESOURCES  
NORTHERN ADMINISTRATION BRANCH  
RESOURCES DIVISION

SCALE: 1/2 MILE TO 1 INCH  
FT. 1500 0 1500 3000 4500 6000 7500 9000 10500 FT.

ISSUED UNDER THE AUTHORITY OF THE MINISTER  
OF NORTHERN AFFAIRS AND NATIONAL RESOURCES

**NOTICE**  
THIS MAP IS ISSUED AS A PRELIMINARY GUIDE  
IN WHICH THE DEPARTMENT OF NORTHERN  
AFFAIRS AND NATIONAL RESOURCES WILL  
ACCEPT NO RESPONSIBILITY FOR ANY ERRORS,  
INACCURACIES OR OMISSIONS WHATSOEVER ON  
THE SHEET BEFORE ADEQUATE SURVEYS HAVE  
BEEN MADE.



116-C-2	116-C-1	116-B-4
115-N-15	115-N-16	115-O-13
115-N-10	115-N-9	115-O-12

PRICE 50 CENTS

WHITEHORSE 25 Mar. 63  
28 Oct. 65  
20 July 65  
12 July 65  
28 Oct. 66  
11 May 66  
24 May 67

