

Victor OEX
TRAVERSES up to 9 June '70

CANADA

(Joins Dawson 116B & 116C (E 1/2))

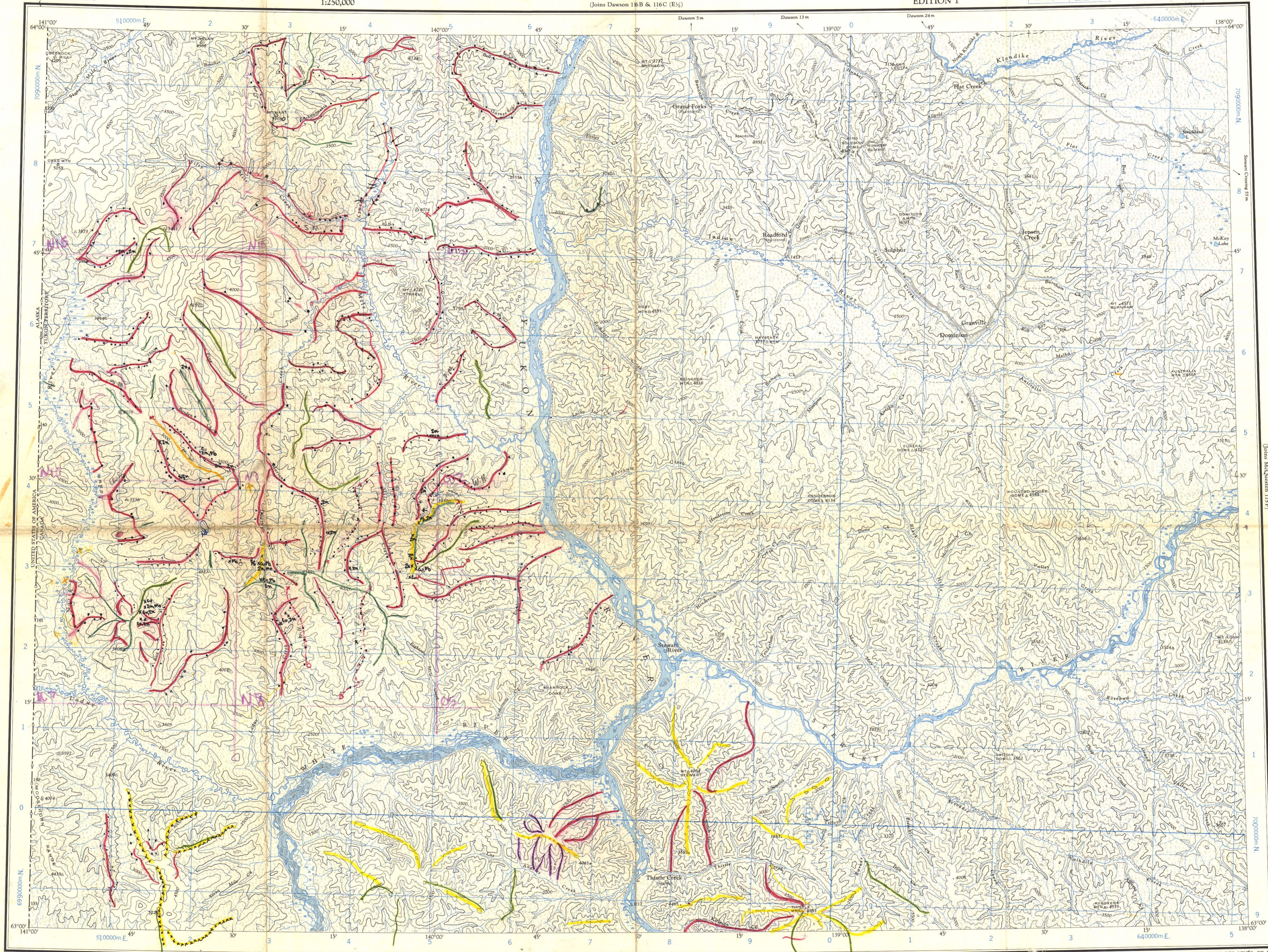
EDITION 1

Refer to this map as:
115-O-N
EDITION 1 ASE
SERIES A 502

115-O & N (E 1/2)

115-O & N (E 1/2)

1:250,000



Compiled, 1963, by the SURVEYS AND MAPPING BRANCH, DEPARTMENT OF MINES AND TECHNICAL SURVEYS, from large scale maps and (west of 140°) from air photographs taken in 1949. Printed 1963.

Traverse Mercator Projection
North American Datum 1927
Contour Interval 500 feet
Elevations in feet above Mean Sea Level
Magnetic declination 31°28' East at centre of map 1963
Annual change (decreasing) 3.5'

Some names on this map are not yet official. Corrections or additions are invited by the Surveys and Mapping Branch.

(Joins Snag 115) & 115K (E 1/2)

Certain names inscribed on this map are not yet official. Corrections or additions are invited by the Surveys and Mapping Branch.

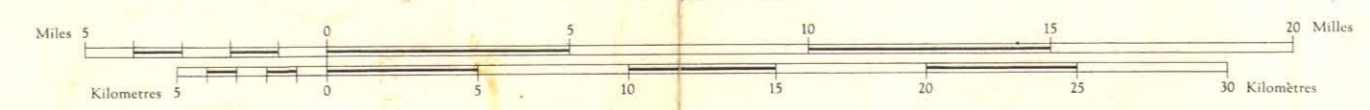
Projection Traverse de Mercator
Réseau géodésique nord-américain unifié (1927)
Écartement des courbes: 500 pieds
Élévations en pieds au-dessus du niveau moyen de la mer
Déclinaison magnétique au centre de la feuille en 1963: 31°28' Est
Variation annuelle (décroissante) 3.5'

Copies may be obtained from the Map Distribution Office, Department of Mines and Technical Surveys, Ottawa.

These maps are for sale at the Bureau de distribution des cartes, ministère des Mines et des Relevés techniques, Ottawa.

STEWART RIVER YUKON TERRITORY

Scale 1:250,000 Echelle



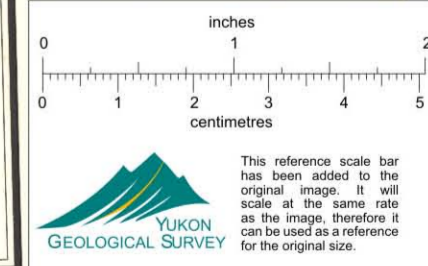
- LEGEND**
- SOIL SAMPLING: 500' intervals
 - SOIL SAMPLING: 1/2 mi. intervals + mounts of laboratory
 - Geologic traverses
 - Road, all weather..... Chemin, toute saison
 - Wagon or winter road..... Chemin de terre ou d'hiver
 - Trail or portage..... Sentier ou portage
 - Town..... Ville
 - Village or settlement..... Village ou hameau
 - Post office..... Bureau de poste
 - Building..... Bâtiment

- Horizontal control point..... Point géodésique
- Boundary monument..... Borne frontalière
- Spot elevation, in feet..... Repère de nivellement en pieds
- Rapids; falls..... Rapides; chutes
- Marsh or swamp..... Marais ou marécage
- Depression contour..... Courbes de cotelette
- Surveyed line..... Ligne arpentée

SPRINKLE PROJECTION	UTM GRID COORDINATE
7V	EA 6450

Rédigée en 1961, par la DIRECTION DES LEVÉS ET DE LA CARTOGRAPHIE, MINISTÈRE DES MINES ET DES RELEVÉS TECHNIQUES, d'après les cartes à large échelle et (ouest de 140°) d'après les photographies aériennes prises en 1949. Imprimée en 1963.

Ces cartes sont en vente au Bureau de distribution des cartes, ministère des Mines et des Relevés techniques, Ottawa.



This reference scale has been added to the original image. It will scale at the same rate as the image. It should not be used as a reference for the original size.

012830

TEN THOUSAND METRE
UNIVERSAL TRANSVERSE MERCATOR GRID
ZONE 7

115-O & N (E 1/2)
EDITION 1

Victor OEX
1970