



GEOLOGICAL SURVEY OF CANADA  
DEPARTMENT OF ENERGY, MINES AND RESOURCES

AEROMAGNETIC SERIES

SHEET 115 O 115 N E 1/2

141°00' 30' 140°00' 30' 139°00' 30' 138°00'

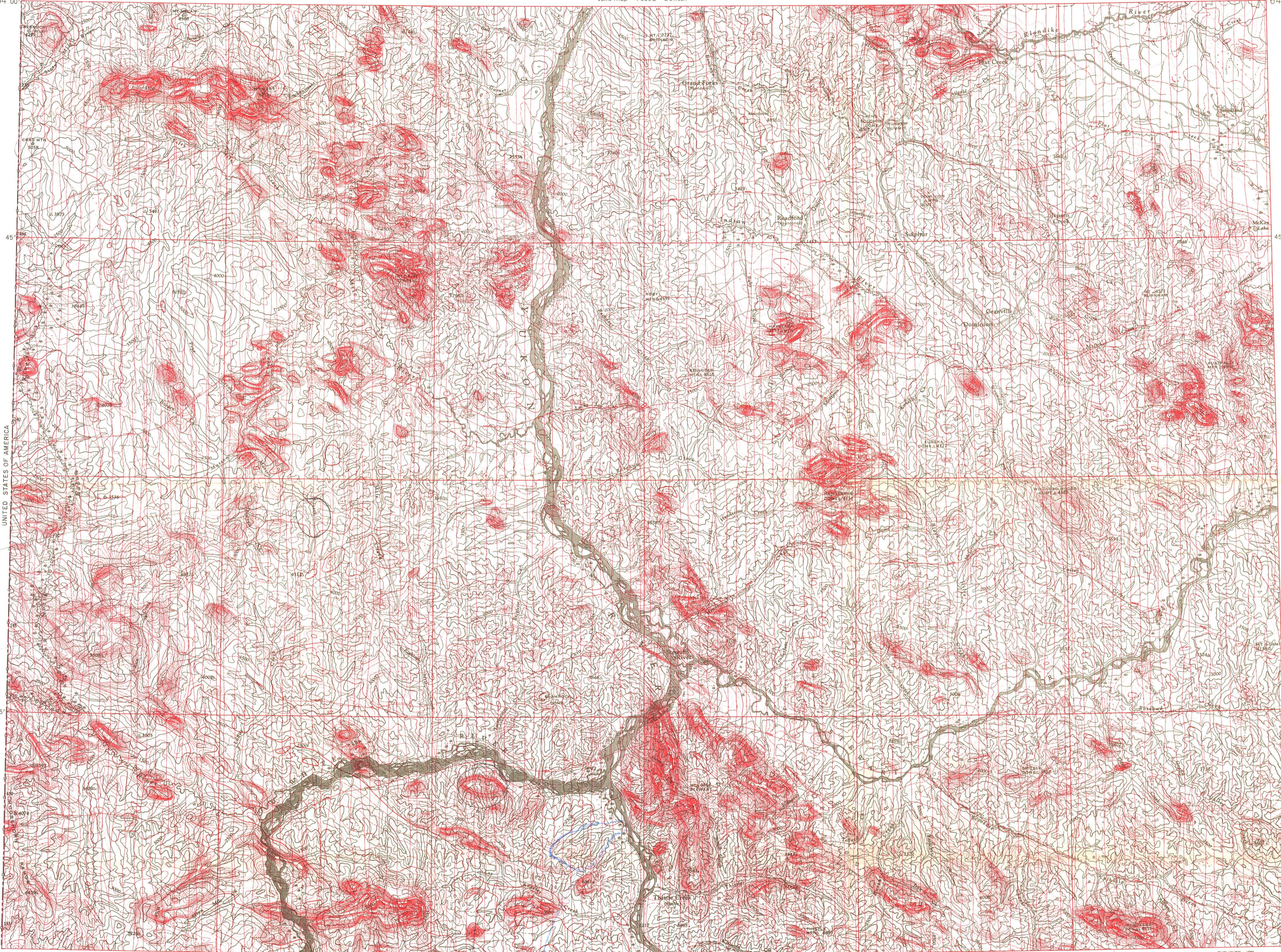
Joins Map 7868G "Dawson"

139°00'

30'

138°00'

64°00'



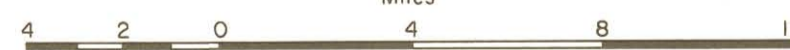
141°00' 30' 140°00' 30' 139°00' 30' 138°00'

Joins Map 7840G "Snag"

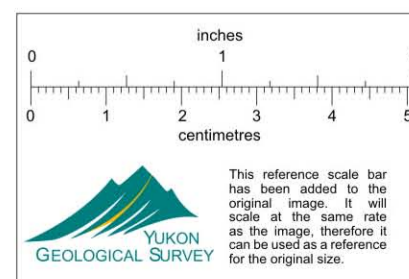
MAP 7854 G

# STEWART RIVER YUKON TERRITORY

Scale One Inch to Four Miles =  $\frac{1}{253,440}$   
Miles



COPIES OF THIS MAP MAY BE OBTAINED FROM THE  
DIRECTOR, GEOLOGICAL SURVEY OF CANADA OTTAWA



Flight altitude: nominally 1000 feet above  
ground level where terrain permitted.

*Granite  
porphyry*

*Blue  
line  
one mile*

Aeroborne Magnetic Survey, September 1965 to May 1968, by Aero Photo Inc.,  
Quebec, four-mile map compiled from one inch to one mile geophysical maps  
published by the Department of Energy, Mines and Resources.  
No correction has been made for regional variation.

GEOPHYSICS PAPER 7854G  
STEWART RIVER  
YUKON TERRITORY  
SHEET 115 O 115 N E 1/2

*Potential Cu-Mo  
areas*

**GEOLOGY**

012831

