

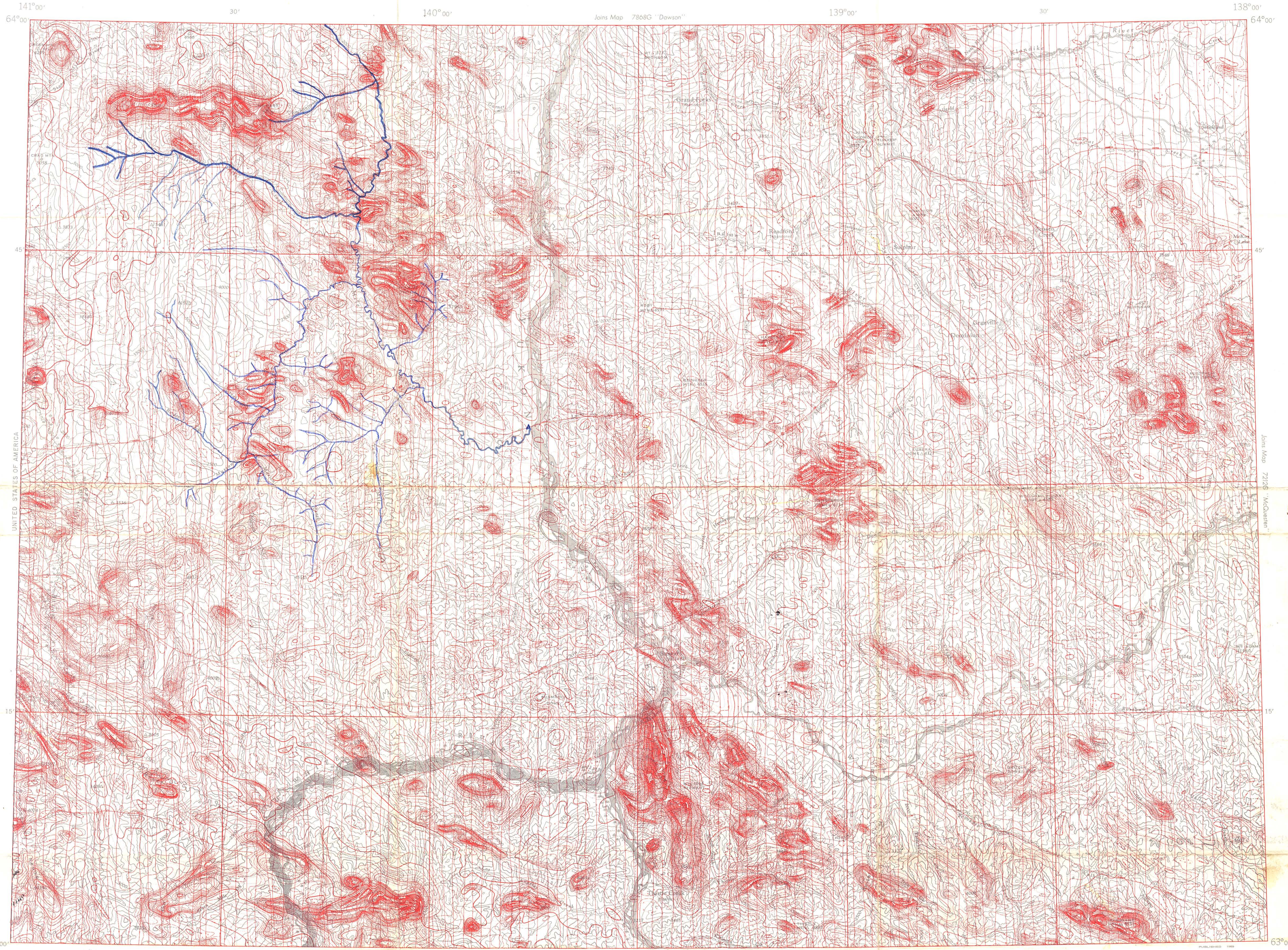
COPY.



GEOLOGICAL SURVEY OF CANADA
DEPARTMENT OF ENERGY, MINES AND RESOURCES

AEROMAGNETIC SERIES

SHEET 115 O 115 N E 1/2

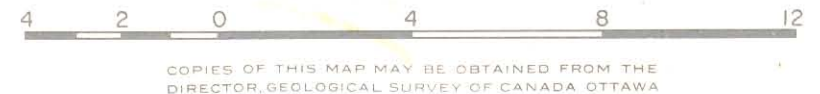


141°00' 30' 140°00' 30' 139°00' 30' 138°00' 63°00' 141°00' 30' 140°00' 30' 139°00' 30' 138°00'

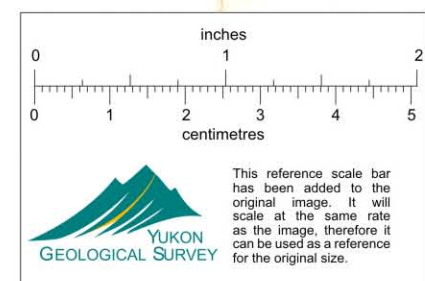
MAP 7854 G

STEWART RIVER YUKON TERRITORY

Scale One Inch to Four Miles = $\frac{1}{253,440}$
Miles

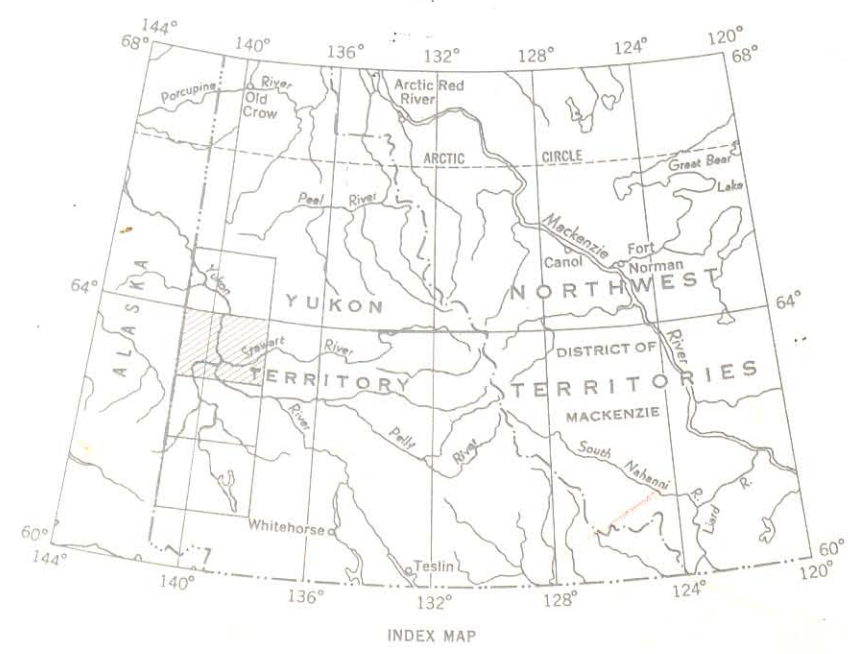


COPIES OF THIS MAP MAY BE OBTAINED FROM THE
DIRECTOR, GEOLOGICAL SURVEY OF CANADA OTTAWA



Flight altitude: nominally 500 feet above
ground level where terrain permitted.

Airborne Magnetic Survey, September 1965 to May 1968, by Aero Photo Inc.,
Québec, four-mile map compiled from one inch to one mile geophysical maps
published by the Department of Energy, Mines and Resources.
No correction has been made for regional variation.



GEOPHYSICS PAPER 7854G
STEWART RIVER
YUKON TERRITORY
SHEET 115 O 115 N E 1/2

Field Sheet
1970

012833