

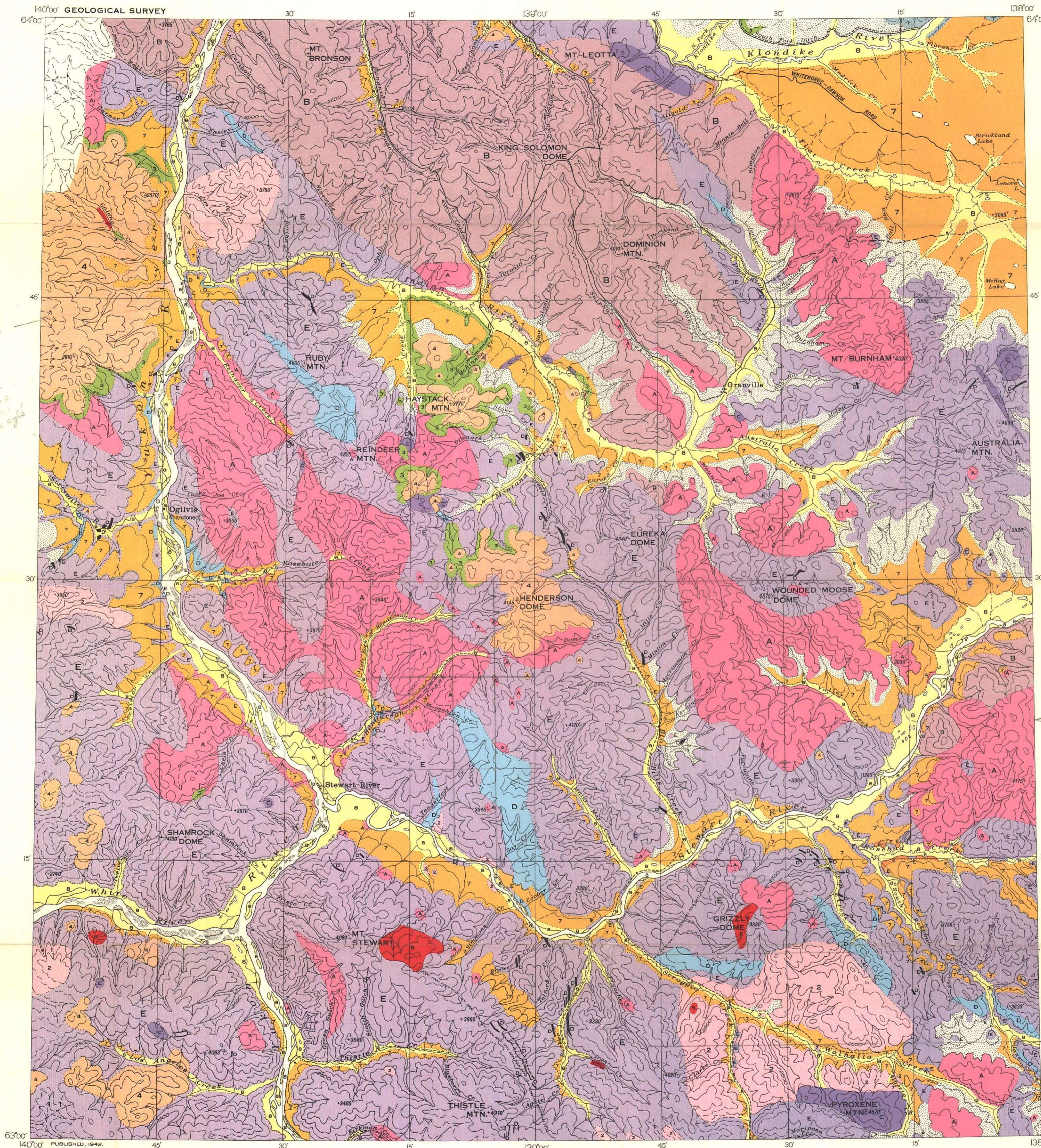
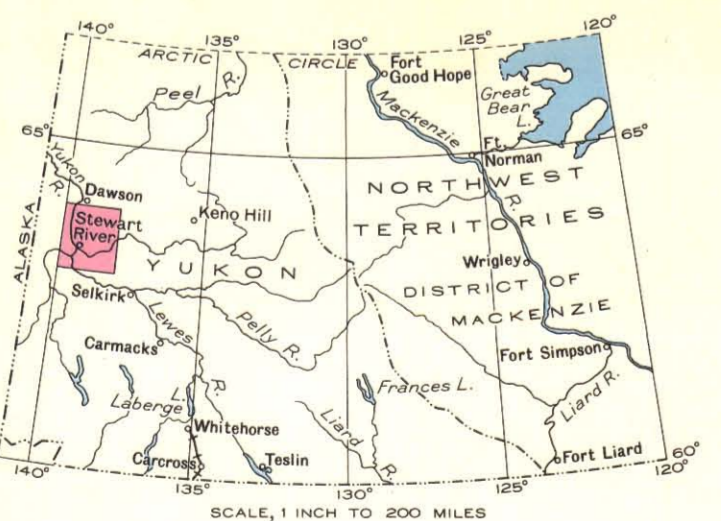
LEGEND

- MODERN RECENT**
- 8 Stream deposits
- TERTIARY AND MODERN**
- 7 Stream deposits
- SELKIRK SERIES**
- 6 Basalt, andesite
- TERTIARY EOCENE OR LATER**
- 5 Granite porphyry, syenite porphyry
- CARMACKS GROUP**
- 4 Andesite, basalt, dacite, trachyte, rhyolite, breccia, tuff, agglomerate
- EOCENE**
- 3 Conglomerate, sandstone, shale, coal, tuff
- MESOZOIC**
- JURASSIC OR LATER**
- 2 Chiefly granite and granodiorite
- ORDOVICIAN OR LATER**
- 1 Argillite, sandstone, conglomerate
- PRECAMBRIAN AND LATER**
- A Chiefly gneissic granite
 - B Klondike schist: sericite schist, minor chlorite schist
 - C Gabbro, pyroxenite, peridotite, serpentine
 - D Limestone
 - E Gneiss, quartzite, schist, slate
- YUKON GROUP**

- Deeply drift-covered areas
- Fault
- Road and building
- Road not well travelled
- Trail
- Post Office
- Lake and stream (position approximate)
- Sand on gravel
- Contours (interval 500 feet)
- Contours (position approximate)
- Height in feet above Mean sea-level

Geology by H. S. Bostock, 1935, 1936, and 1937.

Base-map compiled by the Topographical Survey, 1941, from original surveys, 1934 and 1935. Cartography by the Drafting and Reproducing Division, 1942.



DESCRIPTIVE NOTES

Ogilvie map-area has not been glaciated. Outcrops are scarce and are confined mainly to ridge tops, steep south-facing slopes, and stream-cut banks. Rock fragments in the soil commonly reveal the nature of the underlying bedrock.

The area is one of long ridges with steep sides and of narrow, V-shaped valleys. The tops of the ridges are rounded and exhibit a general uniformity of elevation but include no appreciable plateau areas. The concordant summit levels represent an erosion surface developed in Tertiary time and since entrenched to depths of over 2,000 feet by the main rivers. The upland surface truncates all the rock formations except the lava flows in Rosebud Creek.

The main river valleys and their tributaries are bordered by remnants of rock terraces at many levels. The terraces record periods of relatively stable base level during uplift and dissection of the upland surface. The lowest terrace is the most persistent. In the lower part of Stewart Valley, near Scroggie Creek, it is less than 100 feet above the river but disappears higher upstream. Downstream, along Yukon Valley, it rises to 250 feet or more above the river at the north edge of the map-area. The terrace extends up Indian and Sixtymile Rivers as well as up the larger streams in the region of Bonanza and Hunker Creeks.

The YUKON GROUP (E) consists of gneisses, schists, micaceous quartzite, phyllite, slate and limestone, and some sheared greenstones that resemble altered volcanic rocks. Quartz veins are abundant in many localities. Sections up to a thousand feet or more thick may be mainly composed of a single rock type, but in all cases there is some intermingling of other types and distinctive horizons are lacking. The structure and sequence of the strata are only broadly apparent. A major synclinal axis traverses the central part of the map-area northwestward from near the mouth of Barker Creek through the limestone body on Gay Creek, the heads of Montana and Ruby Creeks, and across Yukon River at the mouth of Enstley Creek. Adjacent anticlines, if present, are not apparent and on Los Angeles and Australia Creeks the strata for the most part dip toward the syncline. Large areas separated by faults from the major structure show no relationship to the syncline. The angle of dip of the strata is generally between 20 and 50 degrees. Micaceous quartzites, mica schists, and mica gneisses predominate in the southwest and on Australia Creek and probably constitute the lowest part of the group present in this district. They appear to be overlain by an assemblage containing a large proportion of hornblende-feldspar gneiss and this, in turn, is succeeded by strata of all types among which limestone (D) becomes increasingly abundant toward the top of the section. Near the principal limestone zone, and for a few miles on either side of the synclinal axis, the strata of various places are less altered and include more graphitic phyllites and slates than elsewhere. Contact metamorphism is exceptionally intense near some of the intrusive bodies. Southeast and east of Mount Burnham the Yukon Group is cut by abundant dykes of pegmatite.

The Palaeozoic strata (1) in the northeast corner of the map-area form part of a large area of these rocks. They consist mainly of well bedded black, grey, and brown argillite, brown sandstone, and pebble-conglomerate. Some of the strata are calcareous. Others are siliceous and cherty. Two miles northeast of the map-area, fossils of Ordovician or, more probably, later Palaeozoic age were found in what are believed to be the same rocks. The beds are cut by andesite dykes. They show none of the regional metamorphism of the Yukon Group (E), the Klondike schist (B), or the gneissic granite (A).

A number of small, basic to ultrabasic intrusions (C) lie in three north-west-trending belts. The dykes and boss near Australia Mountain are of serpentinized peridotite. The smaller dykes are much sheared and slickensided and, in places, are schistose, but the larger bodies, such as that on Mount Leotta, are quite massive. A body of massive, coarse, green pyroxenite forms Pyroxene Mountain. To the northwest on Black Hills and Eldorado Creeks, are bodies including dykes too small to map, of diabase, hornblende-rich gabbro, hornblende, pyroxenite, and peridotite. They show little shearing but a few are foliated. Two irregular bodies and a number of unmapped dykes of pyroxenite and gabbro occur near White River. They are partly serpentinized and, in places, are somewhat foliated. All these basic rocks intrude the Yukon Group. On the whole they are less sheared and less distinctly foliated than the adjacent granitic intrusions. The little available evidence indicates that they have been intruded by the granitic rocks and that they may not all be of the same age.

The KLONDIKE SCHIST (B) is typically a light-colored, massive, sericitic rock containing much quartz, commonly in corrugated lenses a small fraction of an inch thick. It grades through feldspathic quartz-mica schist to argillite and gneiss types. Small bodies of schist similar to the Klondike schist occur in the area of gneissic granite on Henderson Creek. The Klondike schist truncates strata of the Yukon Group, holds inclusions of these rocks, and otherwise exhibits characteristics of an intrusive rock.

The greater part of the main bodies of gneissic granitic rocks (A) are close to granite in composition but some of the smaller bodies are of granodiorite and quartz diorite. Remnants of larger feldspar or quartz crystals lie in a foliated groundmass of quartz, mica, chlorite, and, less commonly, hornblende, tourmaline, and garnet. Parts of the larger bodies may be only slightly gneissic. Other parts have been crushed and sheared to form fine-grained rocks. All gradations exist between these extremes and are well exemplified by the granite body that extends northwestward from Mount Burnham. Many dykes and sills of gneissic granite, aplite, and pegmatite are present. The larger gneissic granite bodies, lie in the Yukon Group strata near contacts with the gneissic granite.

East of the Yukon and north of Indian River is a stock of coarse, grey granite (2). The rock is not foliated and is sheared in only a few small areas. The large granitic body exposed on either side of Scroggie and Waihalia Creeks (2) is a coarse white granite near the junction of these creeks but, farther south and east, is more nearly a granodiorite and carries large pink feldspar crystals. Along its southern contact is a zone composed mainly of hornblende and pink feldspar. The body contains numerous xenoliths of the Yukon Group and innumerable pegmatitic intrusions that, in places, make up fully 30 per cent of the volume of the rock.

A clastic assemblage (3) consisting of conglomerate, sandstone, arkose, greywacke, shale, and tuff lies unconformably on rocks of the Yukon Group (E) and associated intrusions (A, B, and C) and is overlain by lavas of the Carmacks Group (4). Over 500 feet of, chiefly, conglomerate is exposed on McKinnon Creek. Here pebbles and grains of white vein quartz make up the greater part of the rock. Other pebbles are of quartzite, gneiss, and schist, and, like the vein quartz, are derived from the underlying Yukon Group. The pebbles are rounded and few are over two inches long. With the conglomerate is interbedded some sandstone and carbonaceous shale, the latter containing thin seams of coal. Fragments of plants are common. The formation is cut by a number of dykes of rocks lithologically similar to the overlying lavas. The areas of these sedimentary rocks to the south consist of similar strata but those west of Yukon River hold detrital materials from various formations including some that are not present in the map-area. Volcanic materials of the Carmacks Group (4) are intercalated with the upper beds of these sedimentary deposits. The strata dip at angles up to 35 degrees. The area fringed by these rocks west of Yukon River forms a syncline trending northwesterly with a minor anticline in it extending up Galeana Creek. Along the power ditch between the forks of Klondike River are beds of conglomerate, sandstone, clay, and lignite (3) that have been correlated tentatively with the strata described above. They form part of a sedimentary basin that extends for over 50 miles to the northwest, in parts of which plants regarded as of Eocene age have been found.

The CARMACKS GROUP (4) of volcanic rocks is predominately andesitic in composition. West of Yukon and north of Sixtymile Rivers the strata appear conformable with the underlying Tertiary beds (3). On either side of McKinnon Creek they occur as sheets cut through and overlies the sedimentary beds. South of Sixtymile River a large part of the lavas are light-colored; include more of the acidic varieties than elsewhere; and, in places, appear to be intrusive. The acidic types resemble the Tertiary intrusive rocks (5) but have typically volcanic textures. In almost all parts of the map-area are a few dykes resembling the volcanic rocks, and in the area west of Yukon River, north and south of White River, such dykes are abundant.

Three porphyritic bodies (5) that range from granite to syenite lie in the southern part of the area and are regarded as Tertiary age because of their resemblance to some of the Tertiary volcanic rocks. They intrude the Yukon Group but their relationships to other formations are not known. Mirolitic textures are common. Remnants of a basalt lava flow of the SELKIRK SERIES (6), as much as 100 feet thick, lie on both sides of Rosebud Valley. In places the base of the flow is less than 40 feet above the creek.

Deposits of stream gravels (7) lie on rock terraces and on high saddles in the ridges close to the level of the upland surface. The great deposits of Flat, Rosebud, and Valley Creeks and of Indian River, and the White Channel gravels of the Klondike are believed to have accumulated more or less contemporaneously and all are stream deposits. The White Channel deposits along Bonanza, Hunker, and other creeks draining into Klondike and Indian Rivers formed solely from the rocks in their respective valleys, whereas gravels along Flat Creek contain great quantities of detritus from the Ogilvie Mountains to the north, and those of Stewart Valley from the country to the southwest. The gravel terraces in the valleys of Stewart River and Rosebud Creek contain distinctive chert, chert breccia, and conglomeratic material from Pelly River, not found on the upper Stewart River. The gravels are over 200 feet thick on Bonanza Creek and along Yukon River, and over 500 feet thick on Flat and Rosebud Creeks. Large deposits occur along Valley and Rosebud Creeks valleys up to an elevation of 2,500 feet, and chert pebbles characteristic of these gravels were observed as high up as 3,000 feet. The deposits filled Stewart Valley and were carried through the lowest pass to Australia Creek and down the valley of Indian River to its mouth. Subsequent uplift has led to the re-excavation of the valleys through the gravels into the rock floor beneath and the formation of the lowest rock terrace. Recent stream deposits (8) floor the valley bottoms and flood plains. They rest on the lowest bedrock surfaces of their respective areas.

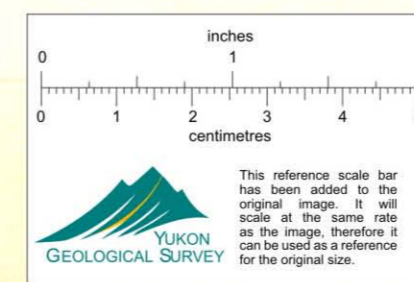
The area mapped includes all but the northern fringe of the Klondike placer district. Though its deposits were discovered nearly fifty years ago they are still an important source of gold and promise to be so for some time to come. In other parts of the area, notably in the central and southern, a number of creeks have, in the past, been found to carry gold placers of some importance. These have been found in the gravels of both the recent (8) and older (7) stream deposits. Most of these creeks have still to be investigated by drilling or other modern methods. The possibilities of lode mining are largely unexplored. Though the areas of the Yukon Group adjacent to the intrusive rocks present features favouring lode deposits, there have been few discoveries and none has yielded a profitable production.

check for quartzite on eastern side. caps
area of mt 2 5 5
Klondike area
Henderson Creek area
ls at 3500 ft

MAP 711A
OGILVIE
YUKON TERRITORY

Scale, 25,000 or 1 inch to 4 Miles

Approximate magnetic declination, 34° East.



012834