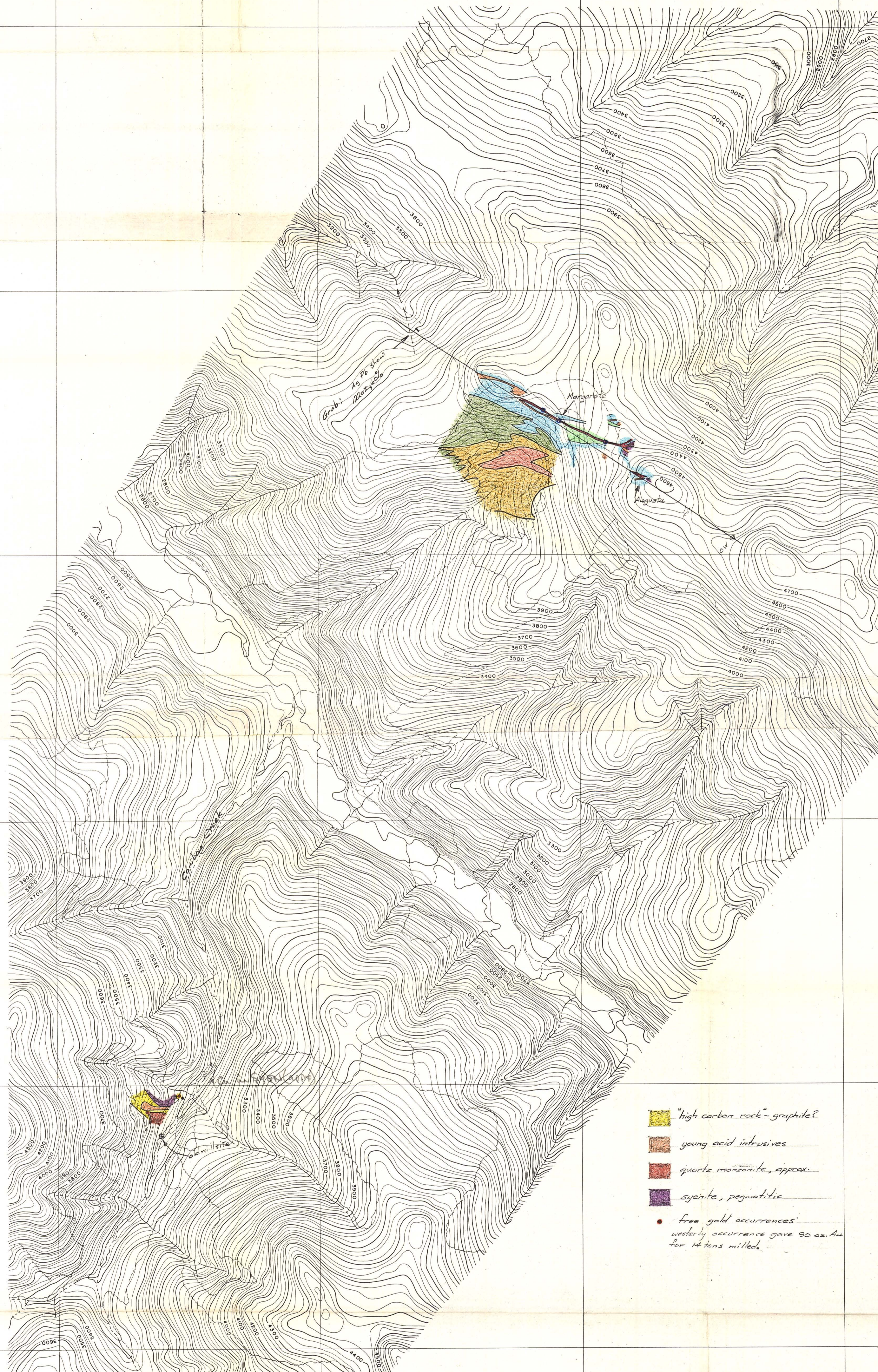


DAWSON RANGE

012941

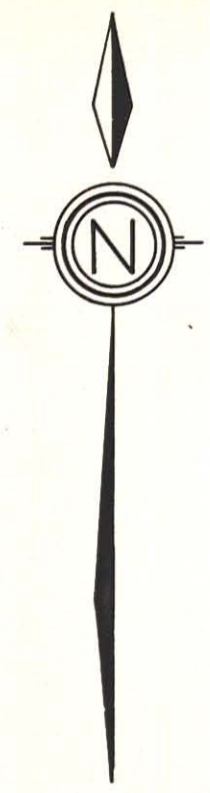
GUDER BEST GROUP

YUKON TERRITORY



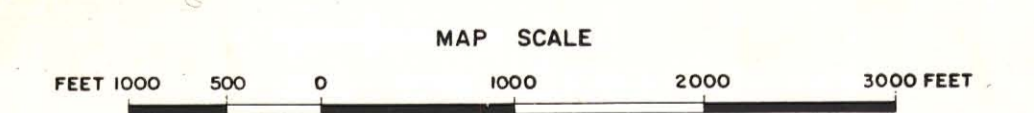
- bleached zone, yte. monzonite?
- chloritic zone, - ?
- chloritic zone, Yukon Group
- breccia zone, fine
- young intrusives
- syenite
- Yukon Group
- mineralized zone

- high carbon rock - graphite?
- young acid intrusives
- quartz monzonite, approx.
- syenite, pegmatitic
- free gold occurrences
westerly occurrence gave 90 oz. Au
for 14 tons milled.

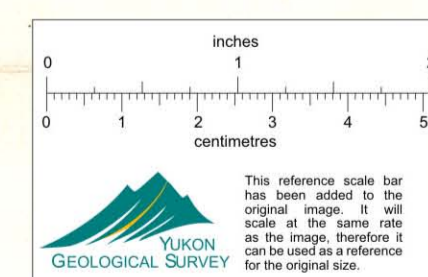


LEGEND

- Improved road
- Secondary road
- Track or trail
- Railway
- Contours 4500
- Cut line
- River
- Stream
- Intermittent stream
- Swamp
- Spot elevation 4190
- Horizontal control STA 16
- Vertical control V-4710-57



CONTOUR INTERVAL 50'



Geological Survey