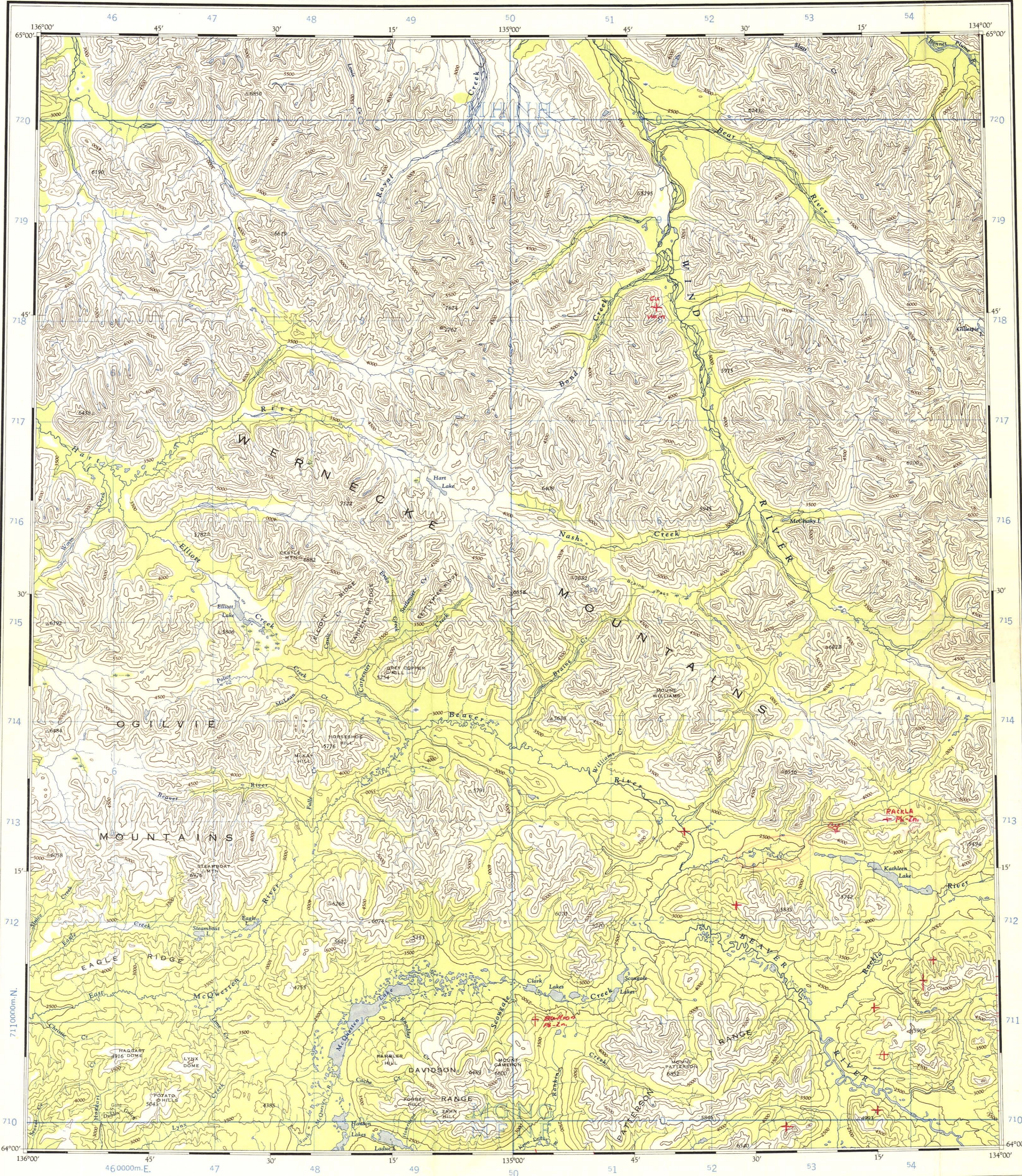


Refer to this Map as: 106 D EDITION 1 ASE SERIES 4502

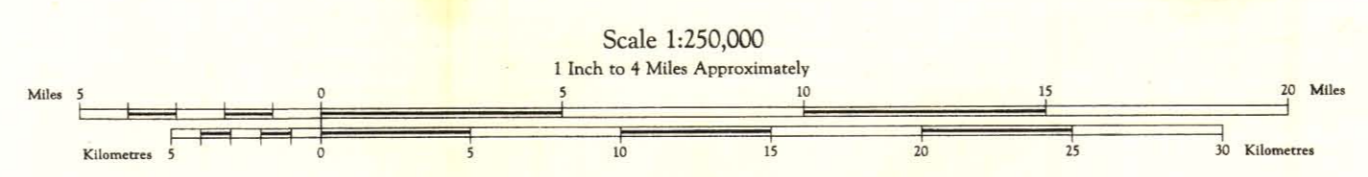


THE DECLINATION OF THE COMPASS NEEDLE 1955  
 The declination of the compass needle at any place along a section line in the direction given on that section line. At other places the declination is between those given on the neighbouring broken lines; thus at the place marked A the declination is between 35°00' and 35°30'. The declination of the compass needle is decreasing 4½ min. annually.

Produced and printed by the Surveys and Mapping Branch, Department of Mines and Technical Surveys, 1957, from air photographs taken in 1949.  
 Universal Transverse Mercator Projection  
 Contour interval 500 Feet  
 Elevations in feet above Mean Sea Level  
 North American Datum 1927

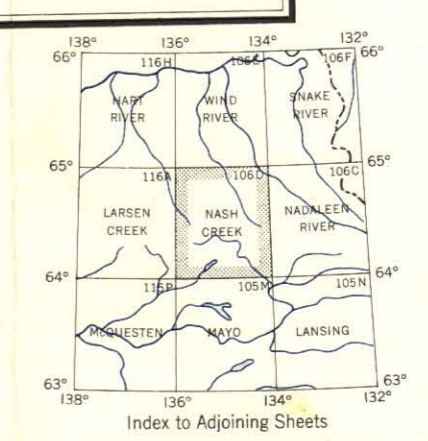
**NASH CREEK**  
 YUKON TERRITORY

012986



Streams may be obtained from the Map Distribution Office, Department of Mines and Technical Surveys, Ottawa.

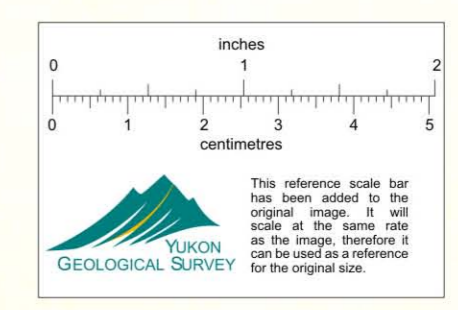
**REFERENCE**  
 Stream: intermittent or dry  
 marsh or swamp  
 Contours: elevation, approximate  
 Wooded areas



GRID ZONE DESIGNATION		100,000 M. SQUARE IDENTIFICATION	
8W		MH	NH 720
		MG	NG
		MF	OF 710

TO GIVE A REFERENCE TO NEAREST 1000 METRES  
 EXAMPLE: GOLD MINE  
 SQUARE: Read letters of 100,000 m. square  
 EASTING: Read number on grid line immediately to left of zone  
 Estimate tenths of a square from this line eastward to point  
 NORTHING: Read number on grid line immediately below point  
 Estimate tenths of a square from this line northward to point  
 MILITARY GRID REFERENCE MG5901  
 (to nearest 1,000 metres)  
 If reporting beyond 99' in any direction, prefix Grid Zone Designation as: 8WMC5901

TEN THOUSAND METRE  
 UNIVERSAL TRANSVERSE MERCATOR GRID  
 ZONE 8



**NASH CREEK**  
 106D  
 EDITION 1 ASE