

PROPERTY EXAMINATION REPORT

ON THE ARCH CREEK AREA

TIPPY-JIFFY-LEGACY-SUE CLAIMS

Claim Sheet 115-G-5

By: W. Roberts                      Sept. 1970

013048

PROPERTY EXAMINATION REPORT  
ON THE ARCH CREEK AREA  
(TIPPY-JIFFY-LEGACY-SUE CLAIMS)

Kluane Range Area  
Whitehorse Mining Division

Longitude: 139° 40'W  
Latitude 61° 30'N

Claim Sheet 115-G-5

By:

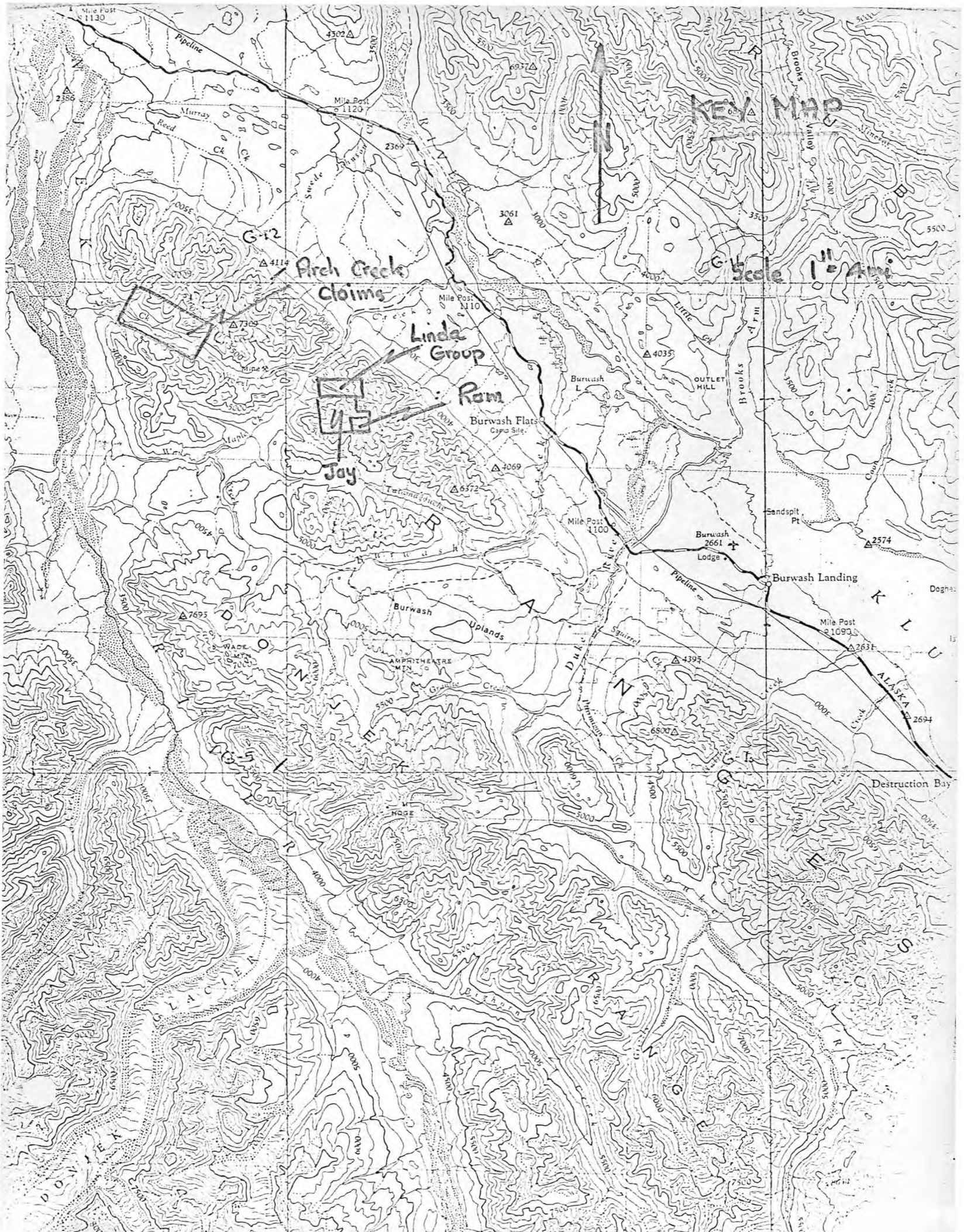
Wayne J. Roberts

ATLAS EXPLORATIONS LIMITED

September 28 - 30, 1970

TABLE OF CONTENTS

	<u>Page</u>
KEY MAP	
SUMMARY	1
CONCLUSIONS AND RECOMMENDATIONS	1
INTRODUCTION	2
LOCATION AND ACCESS	2
PROPERTY AND HISTORY	2
GEOLOGY	3
ECONOMIC GEOLOGY	3
EXPLORATION	4
GEOLOGY MAP	
ASSAY CERTIFICATE	
SUPPORTING MAPS	



KEY MAP

Scale 1:4000

Arch Creek  
Cloings

Linda Group

Rom

Jay

Burwash Flats  
Cape Site

Burwash Uplands

Burwash Landing

Destruction Bay

ALASKA

# ATLAS EXPLORATIONS LIMITED

(N. P. L.)

330 MARINE BUILDING

355 BURRARD STREET

VANCOUVER 1, B.C.

## PROPERTY EXAMINATION REPORT

### ON THE ARCH CREEK AREA

### (TIPPY-JIFFY-LEGACY-SUE CLAIMS)

#### SUMMARY

Mineralization on the Arch Creek claims contains attractive high grade copper-nickel values of limited extent on surface as well as very poor values as disseminations of mineralization within peridotite.

#### CONCLUSIONS AND RECOMMENDATIONS

A showing of copper-nickel mineralization on the northern side of the peridotite sill contains high values in massive form but poor values as disseminations in the sill and surrounding tuff. Due to overburden cover possible extensions of known mineralization are not known to exist. A small magnetic high does occur along strike to the northwest. It is recommended that a further program consist of soil sampling, detailed magnetic and electromagnetic surveys as well as limited cat trenching in the area of the main showing. Without spending more time to locate the magnetic anomalies an option on the property is not recommended at this time. It is curious that Hudson's Bay Mining did not drill this showing

as it appears larger and more attractive on surface than the showing drilled by them on the Linda Group.

### INTRODUCTION

The Arch Creek claims comprise a total of 72 claims of the Jiffy, Tippy, Legacy and Sue groups. Geology is similar to that of the nearby Wellgreen property 2.5 miles to the southeast. Due to recent production activity of the Wellgreen property as well as rumours of increased tonnage there because of economic low grade copper-nickel mineralization suitable for production, the Arch Creek claims warranted examination.

### LOCATION AND ACCESS

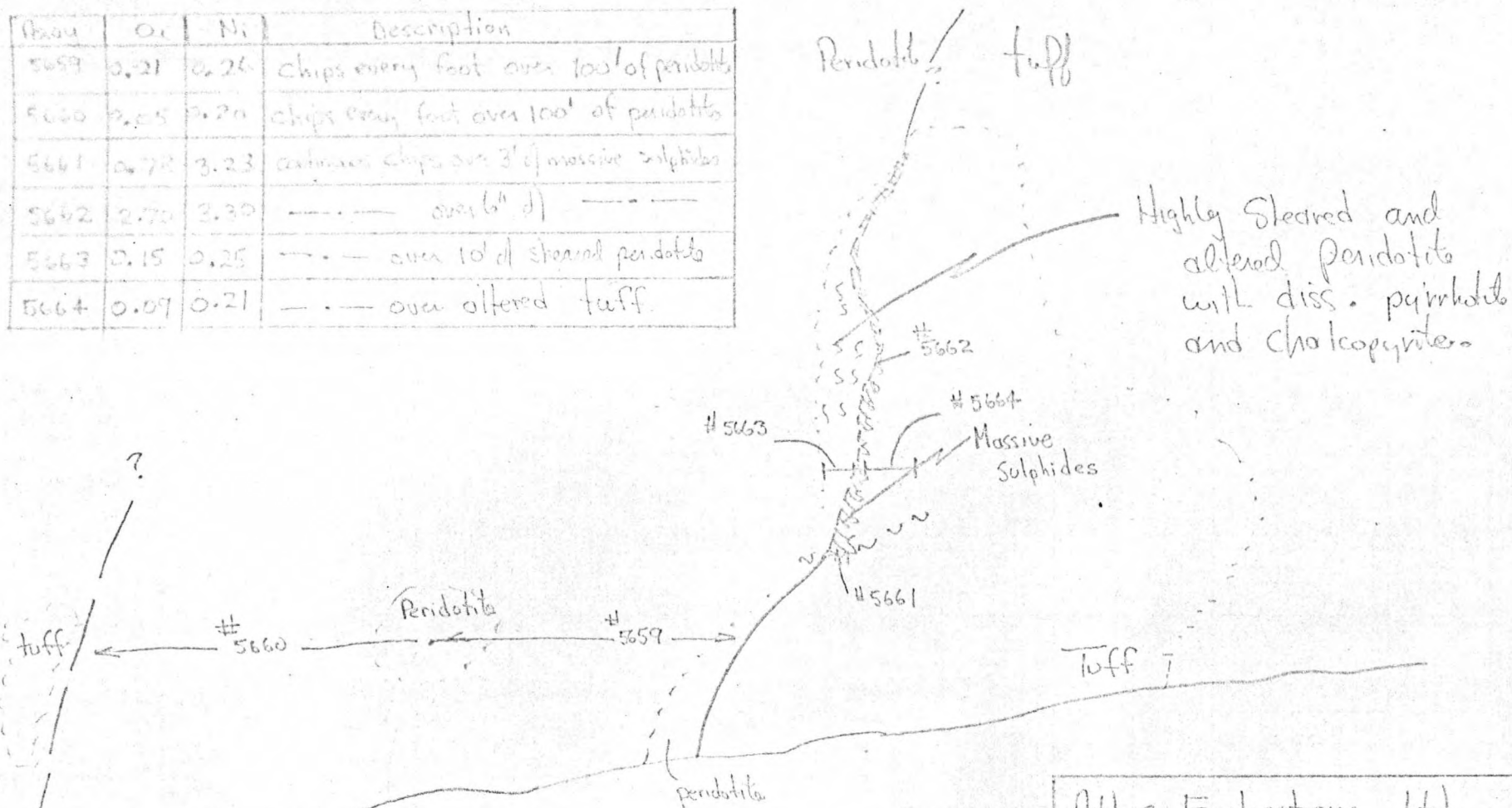
The claim groups are located at latitude  $61^{\circ} 30'N$  and longitude  $139^{\circ} 40'W$  at an elevation of 4000 to 5000 feet, N.T.S. 115-G-5. The group covers an easterly slope and floor of the Arch Creek mountain valley.

Access is by road leading off the Quill Creek road at the mine site which then follows Nickel Creek as far as Arch Creek.

### PROPERTY AND HISTORY

The property is held by Wally Green and Associates with most claims in good standing until 1971. Previous work conducted by R.G. Hilker and P. Sevensma consisted of magnetometer, Ronka EM16, geology and chip sampling surveys.

Assay	O <sub>2</sub>	Ni	Description
5659	0.21	0.26	chips every foot over 100' of peridotite
5660	0.25	0.20	chips every foot over 100' of peridotite
5661	0.72	3.23	continuous chips over 3' of massive sulphides
5662	2.70	3.30	----- over 6" d) -----
5663	0.15	0.25	- - - over 10' of sheared peridotite
5664	0.09	0.21	- - - over altered tuff.



Looking Northwest!

Vertical Section of Cliff

Atlas Explorations Ltd.

Arch Creek Claims

PA Showing # 1

WJR

Scale 1" ≈ 50'

DATE Oct 6th 1970

## ASSAY CERTIFICATE

FILE NO. 6461-15

WHITEHORSE ASSAY OFFICE

P.O. BOX 346. WHITEHORSE, YUKON

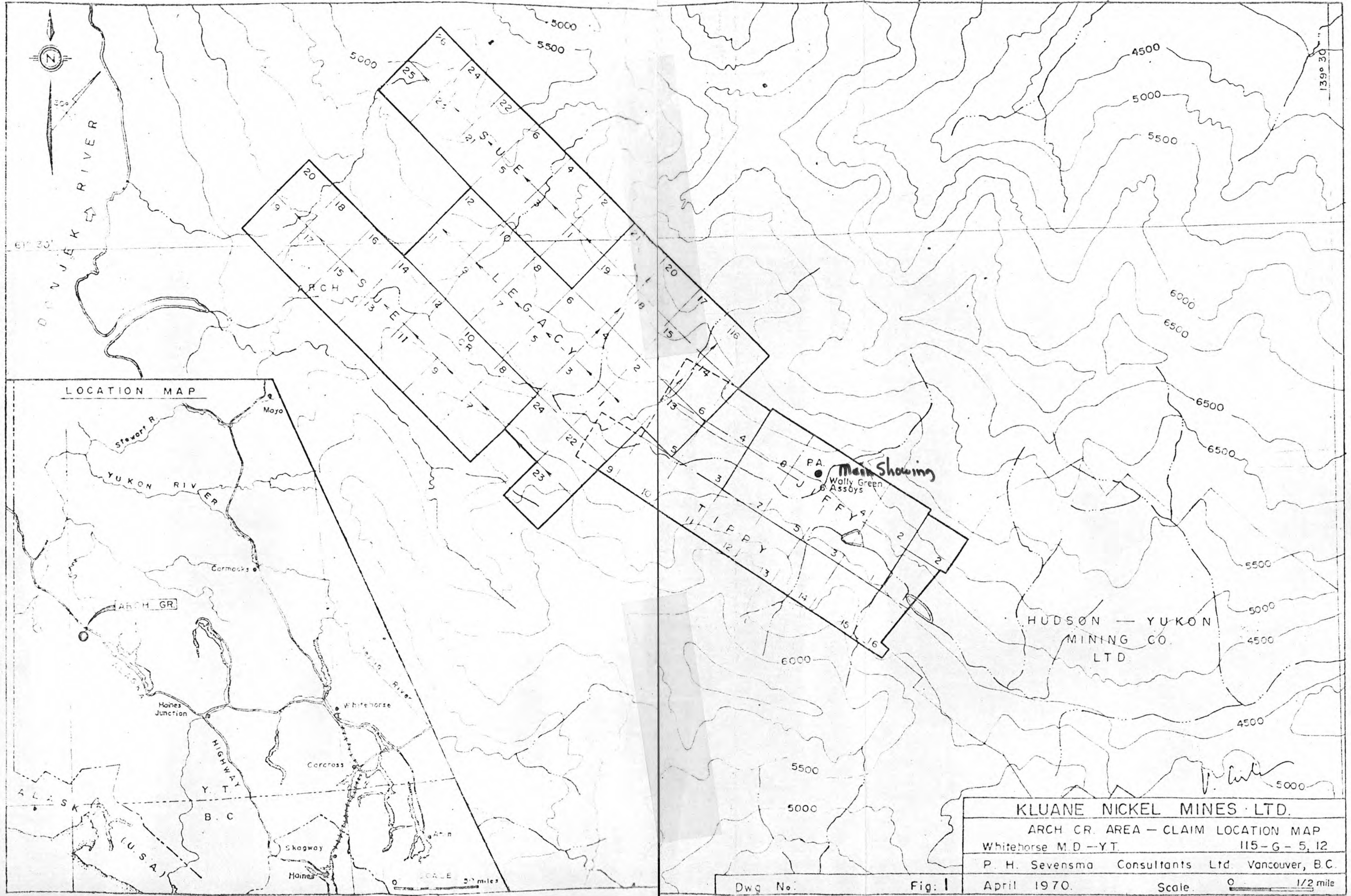
RECEIVED FROM

Atlas Explorations Ltd.,*Wally Green*

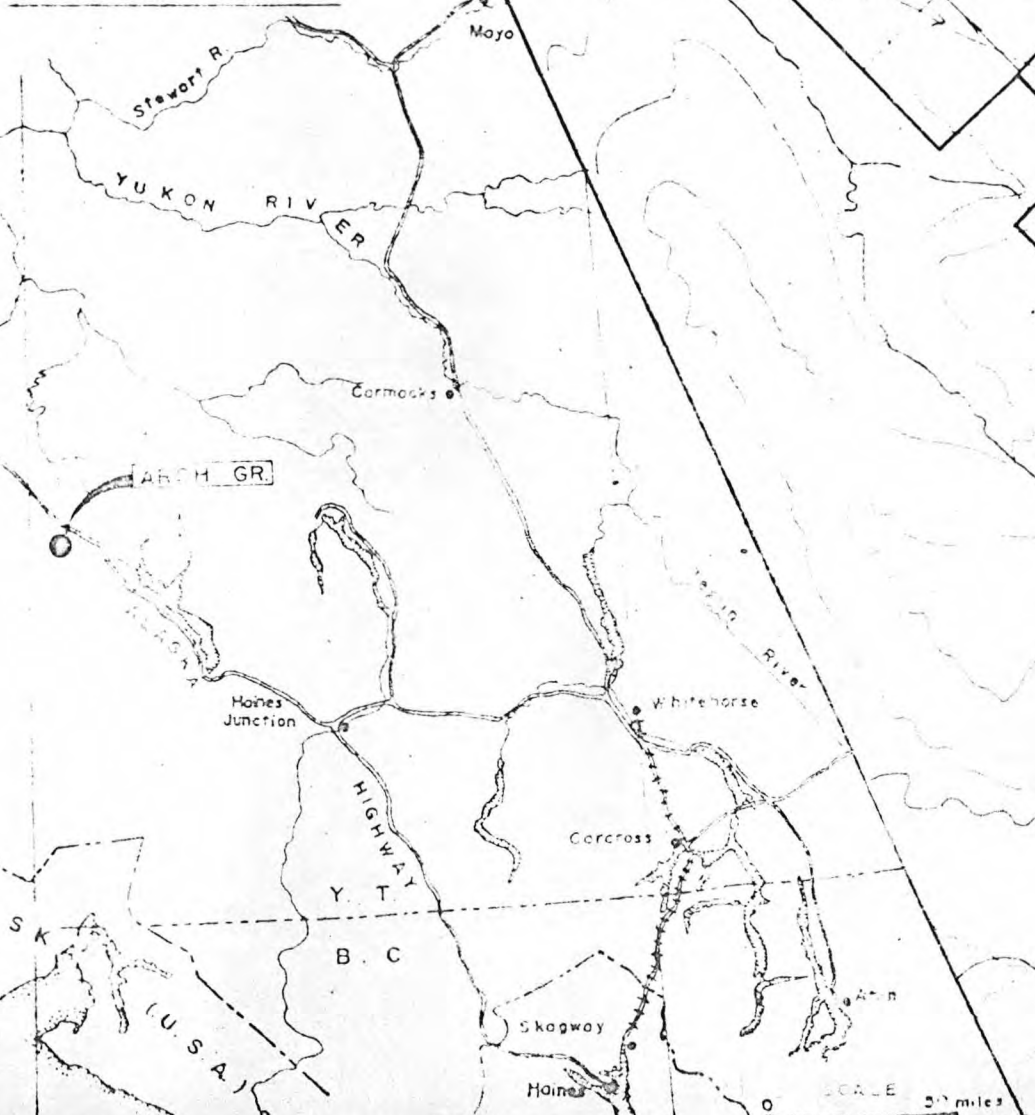
SAMPLE NO.	GOLD OZ. PER TON	SILVER OZ PER TON	Copper	Nickel		<i>Mr. Properties</i>	
5851		<i>C-100'</i>	.07	.13	} D-C Group	<i>Cluare Range</i>	
5852		<i>Emb.</i>	.03	.01			
5853		<i>C-3'</i>	.15	.01			
5854		<i>C-10'</i>	.04	.01			
5855		<i>C-3'</i>	.70	4.83	<i>Limite Group</i>		
5856		<i>C-50'</i>	2.35		} <i>Rain Cp</i>		
5857		<i>C-5'</i>	3.23				
5858		<i>C-10'</i>	.43				
5859		<i>C-100'</i>	.21	.23	} <i>Jiffy</i>	<div style="border: 1px dashed black; padding: 10px; width: fit-content; margin: auto;"> <p>SEE PAGE 1</p> <p>SEE PAGE 2</p> </div>	
5860		<i>10-200'</i>	.05	.20			
5861		<i>C-3'</i>	.72	3.23			
5862		<i>C-6"</i>	2.70	3.50			
5863		<i>C-10'</i>	.15	.25			
5864		<i>C-10'</i>	.09	.37			
5865		<i>C-80'</i>	.04	.21			

ASSAYER

*Geo. Spalding*



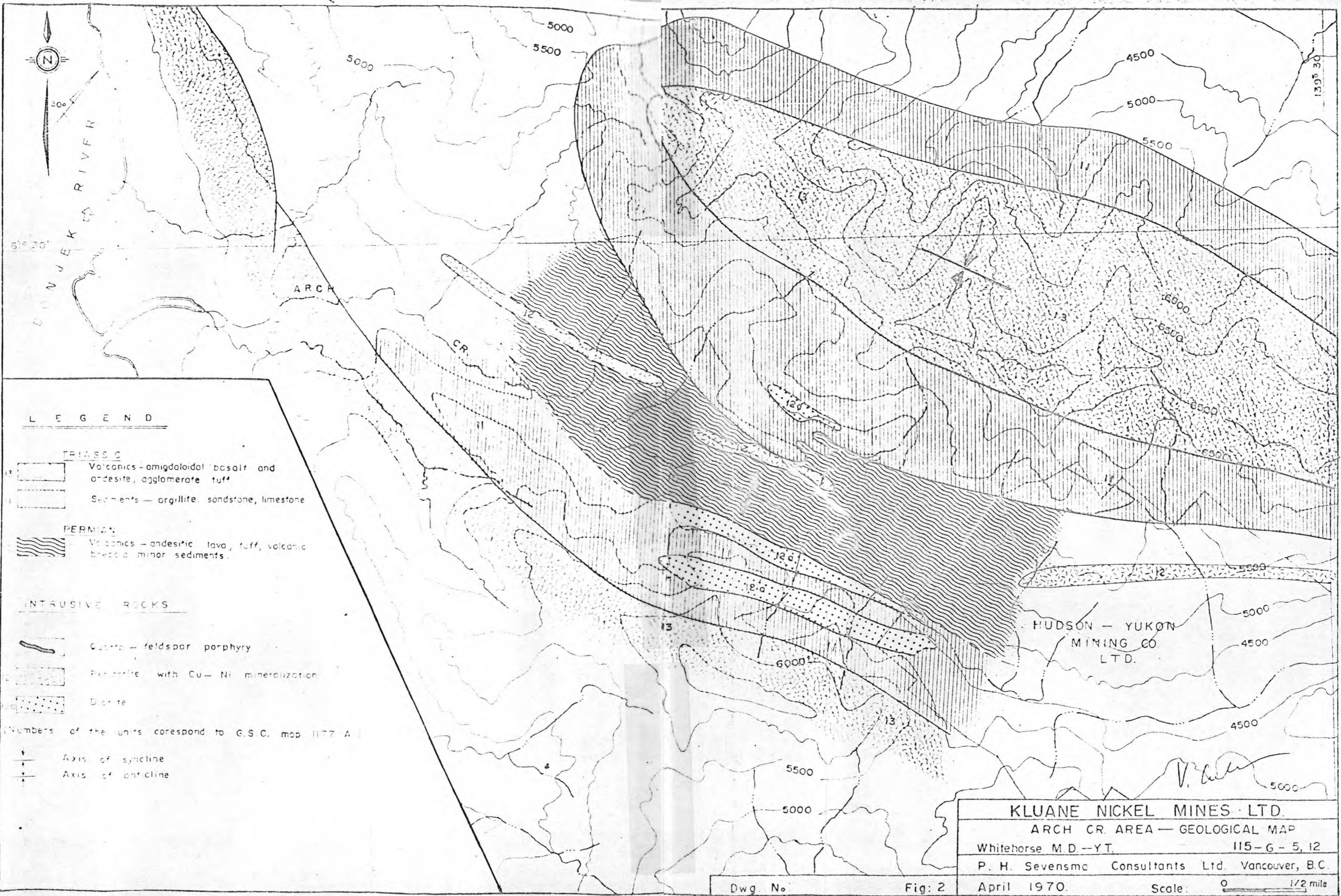
LOCATION MAP



KLUANE NICKEL MINES LTD.



ARCH CR. AREA - CLAIM LOCATION MAP  
 Whitehorse M.D - Y.T. I15-G-5, 12  
 P. H. Sevensma Consultants Ltd. Vancouver, B.C.  
 April 1970. Scale. 0 1/2 mile

Dwg No. Fig. 1

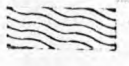


**LEGEND**




**TRIASSIC**

-  Volcanics - amigdaloïdal basalt and andesite, agglomerate tuff
-  Sediments - argillite, sandstone, limestone


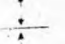
**PERMIAN**

-  Volcanics - andesitic lava, tuff, volcanic breccia, minor sediments

**INTRUSIVE ROCKS**

-  Quartz - feldspar porphyry
-  Porphyry with Cu - Ni mineralization
-  Diorite

Numbers of the units correspond to G.S.C. map 1177 A

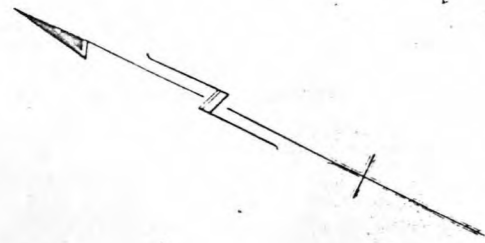
-  Axis of syncline
-  Axis of anticline

**KLUANE NICKEL MINES LTD.**  
 ARCH CR. AREA - GEOLOGICAL MAP  
 Whitehorse M.D.-YT. 115-G-5, 12  
 P. H. Sevensma Consultants Ltd. Vancouver, B.C.  
 April 1970. Scale: 0 1/2 mile

Dwg. No. Fig. 2

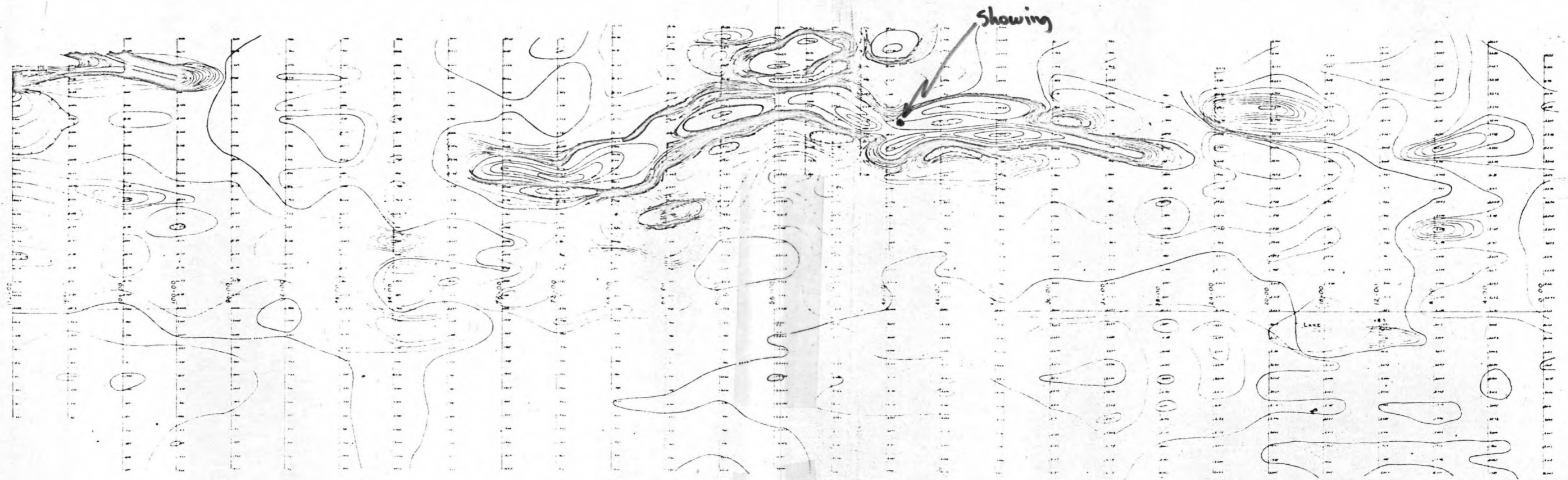


Note: Local magnetic attraction renders direction of meridian uncertain.



KLUANE NICKEL MINES LTD.  
Arch Cr. Property - Magnetometer Survey  
Whitehorse M.D. 115-G-5 & 12

Prepared from survey supervised by R.G. Hilker  
Scale: 1"=800' approx.



*V. Cukor*

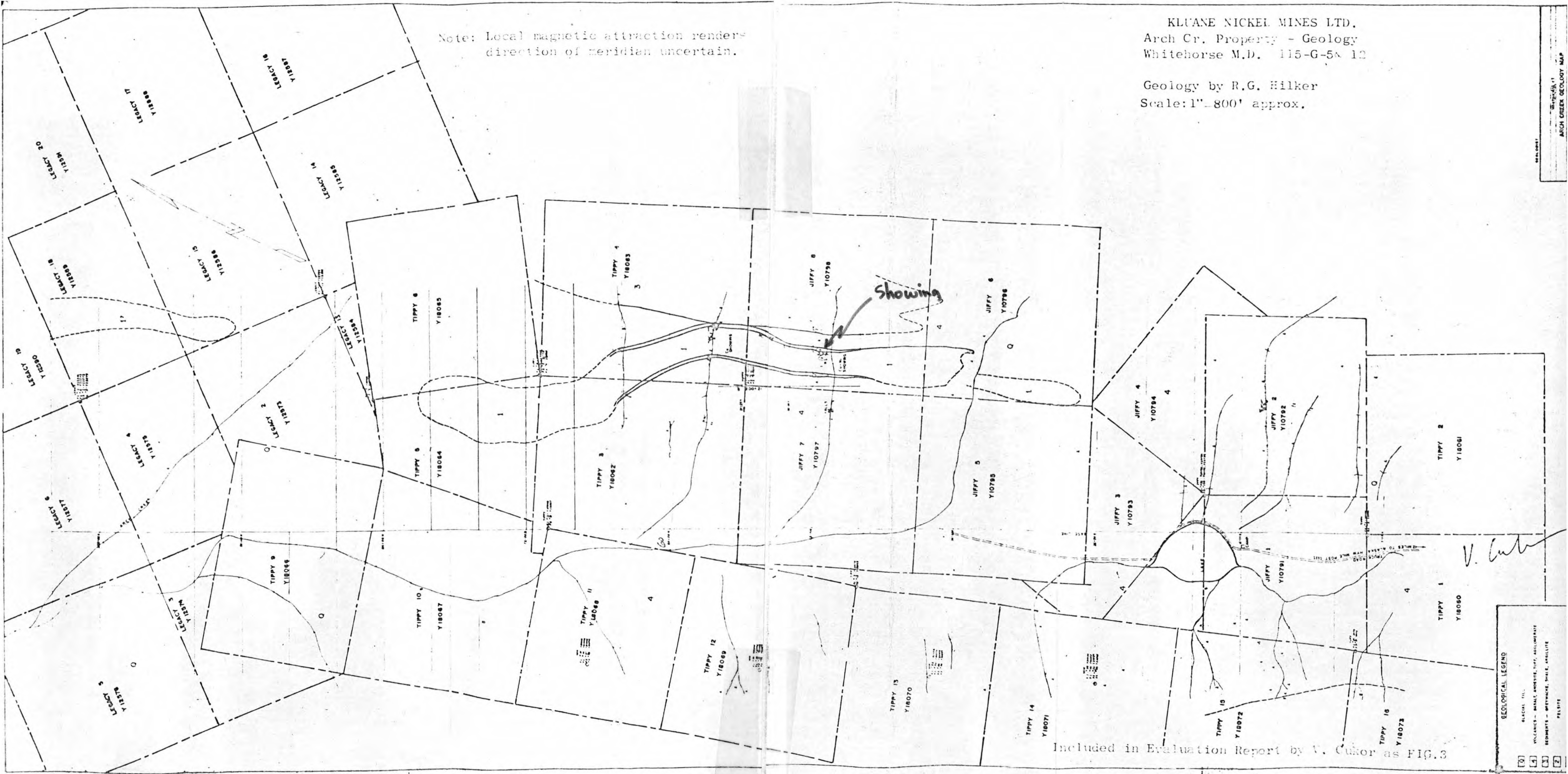
Included in Evaluation Report by V. Cukor as FIG. 4

ARCH CREEK MAGNETOMETER SURVEY		
DATE	APPROX. DATE	BY
1954	1954	R.G. Hilker
SCALE	1"=800'	
PROJECT	115-G-5 & 12	

KLUANE NICKEL MINES LTD.  
Arch Cr. Property - Geology  
Whitehorse M.D. 115-G-5 & 12

Geology by R.G. Hilker  
Scale: 1" = 800' approx.

Note: Local magnetic attraction renders  
direction of meridian uncertain.



Included in Evaluation Report by V. Cukor as FIG. 3

LEGEND

1	GLACIAL TILL
2	GLACIAL SANDS, GRAVELS, CLAY
3	SEDIMENTARY - SANDSTONE, SHALE, ARGILLITE
4	SEDIMENTARY - MUDSTONE, SHALE, ARGILLITE
5	SEDIMENTARY - SANDSTONE, SHALE, ARGILLITE
6	SEDIMENTARY - SANDSTONE, SHALE, ARGILLITE
7	SEDIMENTARY - SANDSTONE, SHALE, ARGILLITE

ARCH CREEK GEOLOGY MAP