

KLUANE NICKEL MINES LTD.

ARCH CR AREA — GEOLOGICAL MAP

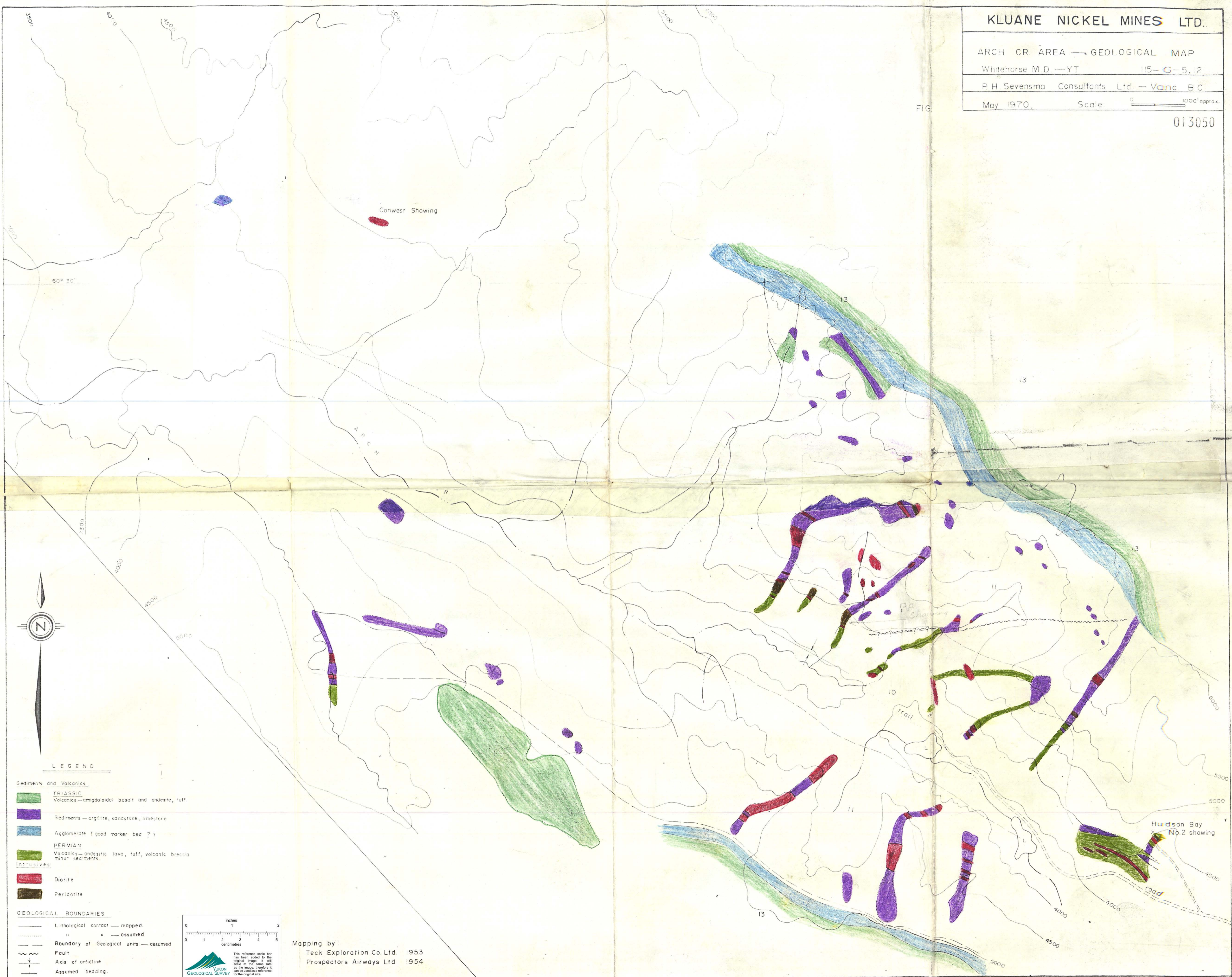
Whitehorse M.D. — Y.T. 115-G-5, 12

P. H. Sevensma Consultants Ltd. — Vanc. B.C.

May 1970, Scale: 0 1000' approx.

013050

FIG

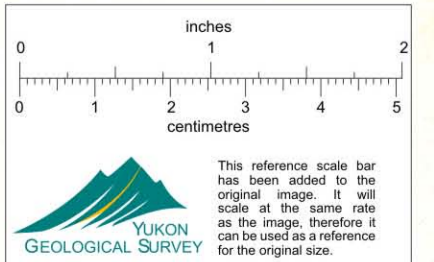


LEGEND

- Sediments and Volcanics
- TRIASSIC
Volcanics—omigdaloidal basalt and andesite, tuff
- Sediments—argillite, sandstone, limestone
- Agglomerate (good marker bed?)
- BERMIN
Volcanics—andesitic lava, tuff, volcanic breccia
minor sediments
- Intrusives
- Diorite
- Peridotite

GEOLOGICAL BOUNDARIES

- Lithological contact — mapped.
- " " — assumed
- Boundary of Geological units — assumed
- Fault
- Axis of anticline
- Assumed bedding



Mapping by:
Teck Exploration Co. Ltd. 1953
Prospectors Airways Ltd. 1954