

SOIL SAMPLES

MAP (PHOTO) NO. _____

013079

ATLAS EXPLORATIONS

PROJECT _____

SAMPLER _____

DATE _____

SAMPLE NO.	LINE	STATION	DEPTH HORIZON	COLOR	TEXTURE	ORGANIC MATTER	FLOAT	NOTES (O/CPS., WETNESS, ETC.)
279	Good	Brown Soil	8" down	beneath ash				
280	10"	clay-like	beneath ash.	+ some ash.				
281	8"	Rocky brown	beneath ash					
282	10"	Good Brown	beneath ash					
283	10"	Good clay.						
284	12"	ash & clay						
285	8"	Good Brown Soil	Some rootlets					
286	8"	Good Brown clay						
287	14"	Ash						

SOIL SAMPLES

MAP (PHOTO) NO. 11569

PG. _____

ATLAS EXPLORATIONS

PROJECT _____

SAMPLER W.H.DATE July 22

SAMPLE NO.	LINE	STATION	DEPTH HORIZON	COLOR	TEXTURE	ORGANIC MATTER	FLOAT	NOTES (O/CPS., WETNESS, ETC.)
28270								
271								Ash
272								Ash 30% Beneath ash 70%
273								Dark layer under Ash 18" down
274								Good soil 8" down
275								12" Wet volcanic or brown layer under?
276	10"							Good brown soil beneath Ash
277	Pit							Mostly Y. G. float. ^{Some f.g.} and g.
278	Salt	W=2ft, Flow=F; ST;						no org. Sulfidizingtzite float 22-1 22-2 Pore

SOIL SAMPLES

MAP (PHOTO) NO. _____

PG. _____

ATLAS EXPLORATIONS

PROJECT _____ SAMPLER _____

W.H.

DATE _____

SAMPLE NO.	LINE	STATION	DEPTH HORIZON	COLOR	TEXTURE	ORGANIC MATTER	FLOAT	NOTES (O/CPS., WETNESS, ETC.)
28297	Silt	Creek 30' W of limestone outcrop.				1.0, F, ST, No org.		250 ft from 296 Soil
298	14"	Good		brown clay	± some			On top of limestone outcrop black organic
299	Silt	Bigger Creek E of limestone outcrops				2.0, F, ST, No org.		100 ft from 298 Soil
300	10"	Good		brown clay	beneath ash			
301	"	Patto						
302	"	"						
303	Silt	250' from 302				0.5, m, Vol. Ash. Silt, No org.		
304	8"	Good		brown clay				
305	Silt					0.5, m, St, (Vol. Ash) No Org		400' from 304

SOIL SAMPLES

MAP (PHOTO) NO. _____

PG. 3

ATLAS EXPLORATIONS

PROJECT _____

SAMPLER W.H.DATE July 22/70

SAMPLE NO.	LINE	STATION	DEPTH HORIZON	COLOR	TEXTURE	ORGANIC MATTER	FLOAT	NOTES (O/CPS., WETNESS, ETC.)
28288	Silt	1.5 ft	†, st,	no org.	#89 taken 100 ft up			87,500' back
289	6"	Good brown	clay		some rootlets			
290	8"	Rocky Good	Brown clay					
291	8"	8" Pitto						
292	800'	from last (Talus)	on top	loose soil	on rocks.			
293	14"	Volcanic	Ash					
294	10"	Good Brown	^{clay} soil		beneath ash			
295	16"	Volcanic	Ash					
296	16"	Rocky but good	brown soil					



SAMPLE No.	28270	To	28307
N.T.S.	11569		
PHOTO			
SAMPLER	W. HAMILTON		
PROJECT:	VICTOR OEX		
SCALE	1" = 1/2 mile		
DATE:	July 22		
GEOGRAPHIC LOCATION:	8 miles W of Camp		
SHEET	1	of	1
SAMPLE LOC PLOTTED			
VALUES	"		
GEOLOGY	"		
REMARKS:			

SOIL SAMPLES

MAP (PHOTO) NO. 17989

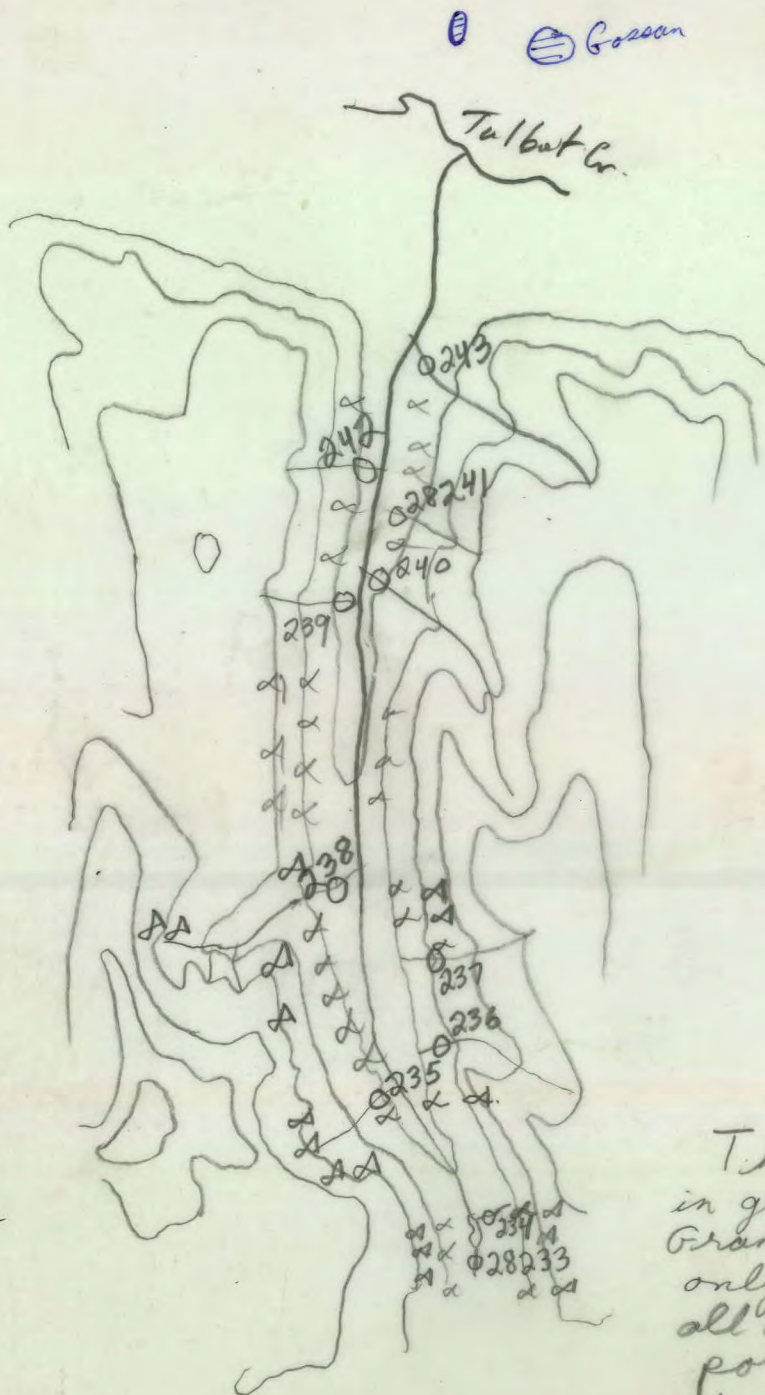
PG. _____

ATLAS EXPLORATIONS

PROJECT VICTORIA GEXSAMPLER W. HAMILTONDATE July 19/70

SAMPLE NO.	LINE	STATION	DEPTH HORIZON	COLOR	TEXTURE	ORGANIC MATTER	FLOAT	NOTES (O/CPS., WETNESS, ETC.)
28233			1.5	S	ST	—	—	#s 28233-232 are omitted
28234			1.0	m	ST	—	—	All Gr. bedrock
28235			1.0	m	ST	—	Gr.	All Gr at headwaters
236			3.0	m	ST	—	all Gr. & S.	
237			0	O	ST	—	All Gr.	From side of stream (Dry) H of under rocks
238			4.0	F	Sd-ST	—	all Gr.	
239			1.0	S	ST	—	—	
240			3.0	F	ST	—	Gr + lot of Porph.	
241			1.0	m	ST	—	—	

SAMPLE NO.	28233	28243
N.T.S.	115G 9	
PHOTO		
SAMPLER	W. HAMILTON	
PROJECT:	VICTOR OEX	
SCALE	1" = 1 mi	
DATE:	July 19 / 70	
GEOGRAPHIC LOCATION:	Talbot Cr.	
SHEET.....	1	of 1
	LATE	INIT'L
SAMPLE LOC PLOTTED		✓
VALUES	Plotted	
GEOLOGICAL	Plotted	
REMARKS:		



Traverse 68



d = Granitobas
A = Granite outcrop

The entire traverse was in granite. Biotite quartz feldspar Granite, medium texture. The only other rock type saw all day was a felspar porphyry float on creek 28240. No Gossans or rusty rocks.

Gossans observed N of Talbot Creek are marked. Rural Co. Ribbons throughout.

SILT SAMPLES

MAP (PHOTO) NO. _____

PG. _____

ATLAS EXPLORATIONS

PROJECT _____

SAMPLER _____

DATE _____

SAMPLE NO.	STREAM WIDTH	FLOW	SAMPLE TEXTURE	ORGANIC MATTER	FLOAT	OUTCROP	NOTES (STAINS, COLOR, SEEPAGES, ETC.)
T-28000	2.5	m	ST	0	qtz porphy		Staked ^{yesterday by} another loc!
T-28001	2.0	m	ST	0	"		" "
T-28002	1.0	S	ST	0	"		" "
T-28003	1.0	m	ST	0	"		" "
T-28004	2.5	m	ST	0	"		Not staked, unless from other side of hill
T-28005	1.5	m	ST	0			On E. side
T-28006	4.0	m	ST	0	"		Main Creek-
S-28007	—	—	—	—	—		Soil sample under qtz-porph. gossan. Near traversa

July 2/1970

Walter Hamilton

Geologic Traverse from Camp

Kluane Lake sheet

1" = 4 miles



- ⊙ = Qtz. shist
 - X = quartzite (dark)
 - △ = fine grained granite
 - = Alaskite
 - = Porphyry (very fine grained matrix ± Qtz. phenocrysts probably same composition to alaskite, ± different texture)
- } YUKON G.

Talus on S facing slope all ○
 Porphyry outcrop about S. 70°, D 15° E.
 80' above creek. Farther up, 50', 100', and Yukon Group outcrops - Qtz. shists + quartzites. No mineralization found. ± 10% Porphyry. Alaskite in talus slope between outcrop.

2-6 5% quartzite
 2-5 5% quartzite
 2-4 perhaps 5% fine grained dark rock (qtzite?)
 2-3 talus ± 90% Alaskite, 10% porphyry
 2-7
 2-8
 Camp
 Rival Co. Chopper activity on ridge
 outcrop on edge of creek
 Yukon Group?
 No Alaskite

SILT SAMPLES

MAP (PHOTO) NO. _____

PG. _____

ATLAS EXPLORATIONS

PROJECT OEX NISLW SAMPLER T. CAMPBELL DATE 16. 6. 70

SAMPLE NO.	STREAM WIDTH	FLOW	SAMPLE TEXTURE	ORGANIC MATTER	FLOAT	OUTCROP	NOTES (STAINS, COLOR, SEEPAGES, ETC.)
33054	15'	M	ST	0			
33055	seepage	S	ST	+			MANY SEEPAGES
33056	4'	DRY	ST	+			
33057	2'	M	W	+			
33058			ST				
33059	20'	M	ST	0			
33060	20'	M	ST	0			
33061	30'	M	ST	0			
33062	4'	M	ST	+			
33063	25'	M	ST	0			

SILT SAMPLES

MAP (PHOTO) NO. 15491-87

PG. _____

ATLAS EXPLORATIONS

PROJECT ODONISLINGSAMPLER T. REAMOUNTDATE 16.6.70

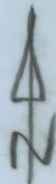
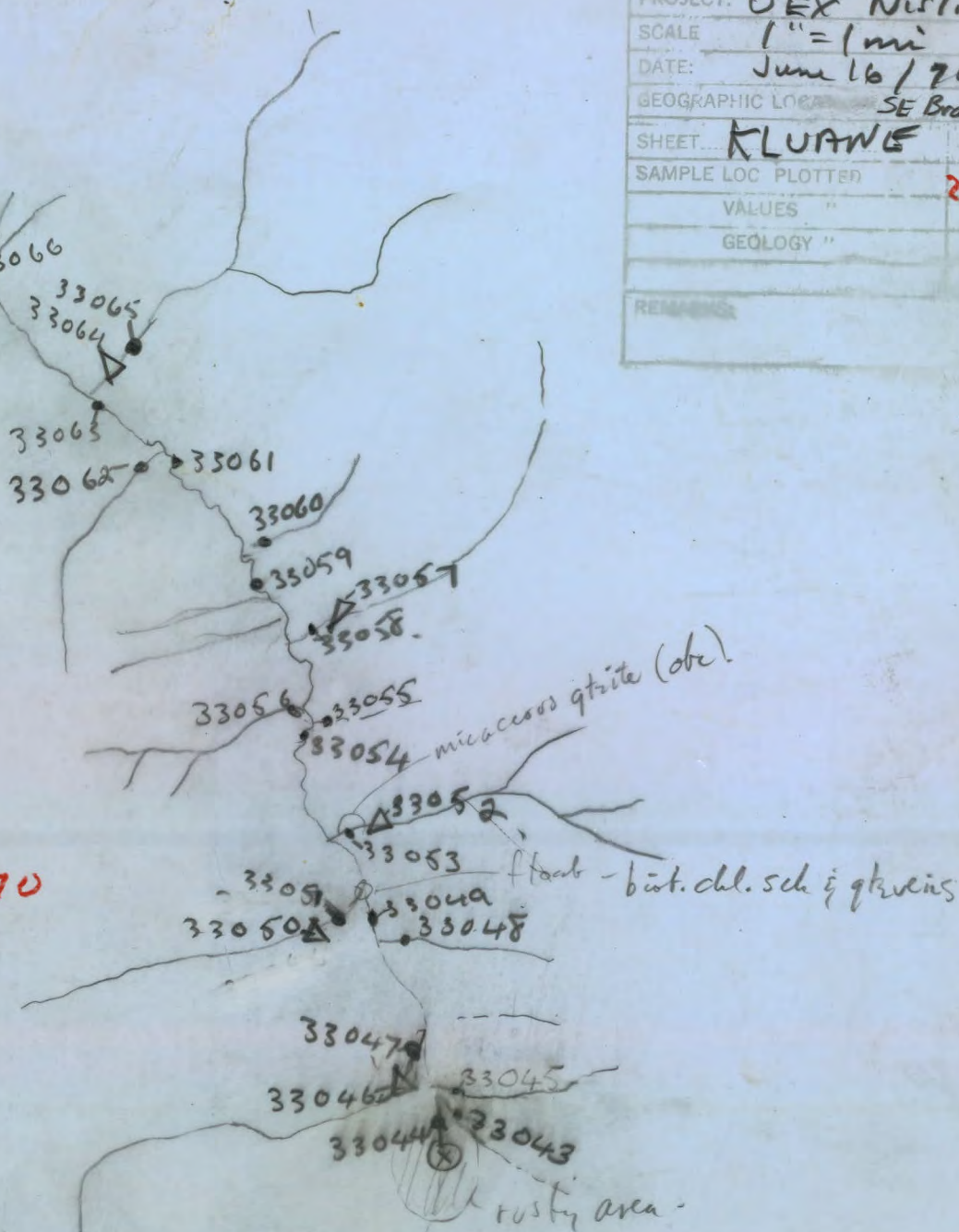
SAMPLE NO.	STREAM WIDTH	FLOW	SAMPLE TEXTURE	ORGANIC MATTER	FLOAT	OUTCROP	NOTES (STAINS, COLOR, SEEPAGES, ETC.)
33043	4'	/	ST	0			CREEK DRY
33044	5'	M	ST	0	RUSTY BEDS	STAIN	ON ROCKS ON CREEK
33045	3'	M	CL	+			
33046 33047	10'	M	W ST	0			
33048	seepage	M	CL	++			MANY SEEPAGES.
33049	8'	M	ST	0			
33050 33051	15'	M	W ST	0			
33052 33053	8'	M	W ST	0			ROCKY OUTCROP INTO CREEK. RED STAIN.

#20

SAMPLE No.	33043 - 33066
N.T.S.	11569.
PHOTO	15491 - 87
SAMPLER	T. Reams bottom
PROJECT:	DEX Nestling
SCALE	1" = 1 mi
DATE:	June 16 / 70
GEOGRAPHIC LOC	SE Branch DuPont
SHEET	KLUANE
SAMPLE LOC PLOTTED	20/6.
VALUES	"
GEOLOGY	"
REMARKS	

meet
Alfred
here

LOCATIONS
PLOTTED.
DMF
JUNE 20/70



SILT SAMPLES

MAP (PHOTO) NO. _____

PG. _____

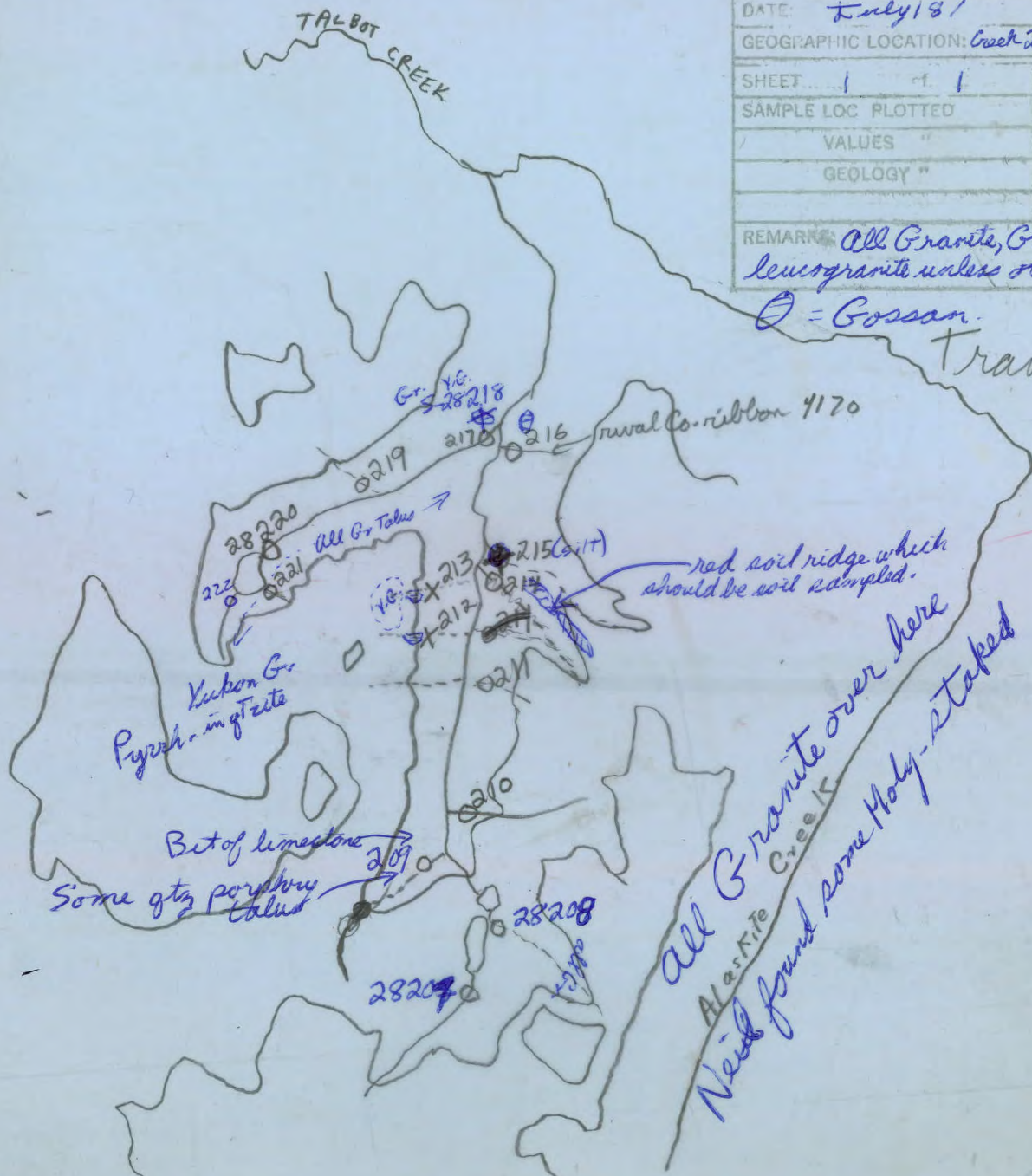
ATLAS EXPLORATIONS

PROJECT _____ SAMPLER _____

DATE _____

SAMPLE NO.	STREAM WIDTH	FLOW	SAMPLE TEXTURE	ORGANIC MATTER	FLOAT	OUTCROP	NOTES (STAINS, COLOR, SEEPAGES, ETC.)
28215	3.0	A	ST	—	Gr. & Y.G. (30%)		
28216	1.0	S	ST	—	—		
28217	5.0	F	ST	—	Gr 80%+ Y.G. 20%	—	Pure quartzites & Pyrrhotite in creek.
28218							Soil at Goslan
28219	0	0	ST	—	Gr.		Silt from dry stream
28220							
28221	1.0	m	ST	—	—		
28222	3.0	F	ST	—	Gr.		

SAMPLE No. 28207 to 28222	
N.T.S. 115 G9	
PHOTO —	
SAMPLER W. HAMILTON	
PROJECT: VICTOR OEX	
SCALE 1" = 1 mile	
DATE: July 18/	
GEOGRAPHIC LOCATION: Creek 2 miles W. of Alaska Creek.	
SHEET 1 of 1	DATE INTEL
SAMPLE LOC PLOTTED	
VALUES "	
GEOLOGY "	
REMARKS: All Granite, Granodiorite or leucogranite unless otherwise noted.	



○ = Gossan.

Traverse 67

red soil ridge which should be soil sampled.

all Granite over here
New found some Holy-staked

SILT SAMPLES

MAP (PHOTO) NO. 115 G 9, 16, 15

PG. _____

ATLAS EXPLORATIONS

PROJECT Victor OerSAMPLER GLASSDATE 20/7/70

SAMPLE NO.	STREAM WIDTH	FLOW	SAMPLE TEXTURE	ORGANIC MATTER	FLOAT	OUTCROP	NOTES (STAINS, COLOR, SEEPAGES, ETC.)
33590	4	M	sd	+			
91	2	S	st	++			
92	3	S	sd	0			
93	2	S	sd	++			
94	3	M	sd	0			
95	3	M	sd	0			
96	2	S	st	+ ///			
97	2	M	sd	+			

SAMPLE No.	to	
N.T.S.	115 G 9, 10, 15	
PHOTO		
SAMPLER	N. Glass	
PROJECT:	Victor OLSX	
SCALE	1" = 1 mi	
DATE:	July 20 / 70	
GEOGRAPHIC LOCATION:	DWARF BIRCH	
SHEET	of	LATE INIT'L
SAMPLE LOC PLOTTED	✓	
VALUES "		
GEOLOGY "		
REMARKS:		

DWARF BIRCH Cr

Trav # 69

X98

X96

X97

X95

X95

X94

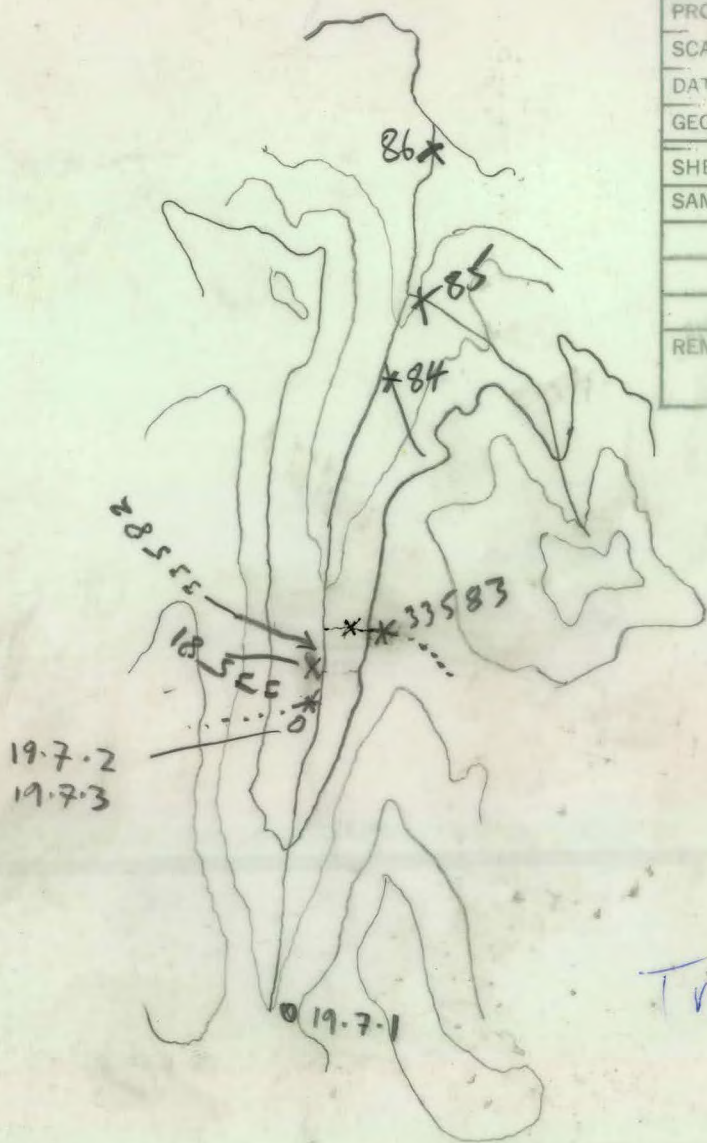
X93

X92

X33591

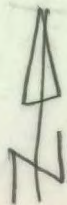
X33590

SAMPLE No. T-33581 to T-33586		
N.T.S. 115 G 9.		
PHOTO		
SAMPLER N. Glass		
PROJECT: Victor OEX		
SCALE 1" = 1 mi		
DATE: July 19 / 70		
GEOGRAPHIC LOCATION: Talbot Cr.		
SHEET:	DATE	INIT'L
SAMPLE LOC. PLOTTED		
VALUES "		
GEOLOGY "		
REMARKS:		



19.7.2
19.7.3

19.7.1



Rock Samples

19.7.1 to 19.7.3

Trav # 67

SOIL SAMPLES

MAP (PHOTO) NO. 11569

PG. _____

ATLAS EXPLORATIONS

PROJECT Victor Oca SAMPLER GLASS

DATE 22/7/70

SAMPLE NO.	LINE	STATION	DEPTH HORIZON	COLOR	TEXTURE	ORGANIC MATTER	FLOAT	NOTES (O/CPS., WETNESS, ETC.)
336 13			1	Gy	sd	15%	✓	
14			1	Gy Br	sd	30-40%	✓	
15			1.5	Gy Br	sd	10%	✓	
16			0.5	Gy Br	sd	60%	✓	
17			0.5	Gy Br	fine	10%	✓	wet
18			1.5	Gy Br	fine	5%	X	wet
Silt 19	width 3	Flow M	Texture sd	organic +				
20			1	Br	fine	5%	✓	

SOIL SAMPLES

MAP (PHOTO) NO. 11569

PG. _____

ATLAS EXPLORATIONS

PROJECT Victor Dex SAMPLER GLASSDATE 22/7/70

SAMPLE NO.	LINE	STATION	DEPTH HORIZON	COLOR	TEXTURE	ORGANIC MATTER	FLOAT	NOTES (O/CPS., WETNESS, ETC.)
33621			0.5	gy	sd	5%	✓	
22			1	gy	sd	5%	✓	
23			0.5	gy Br	sd	20%	✓	
24			1	gy Br	sd	10%	✓	
25			1	gy	sd	5%	✓	
26			1	Br	Fine	5%	✓	FRZ
27	width 3	Flow M	Texture sd	org 0				
28	3	M	st	0				

SOIL SAMPLES

MAP (PHOTO) NO. 115 G9

PG. _____

ATLAS EXPLORATIONS

PROJECT Victor @ ex SAMPLER GLASSDATE 22/7/70

SAMPLE NO.	LINE	STATION	DEPTH HORIZON	COLOR	TEXTURE	ORGANIC MATTER	FLOAT	NOTES (O/CPS., WETNESS, ETC.)
33629			1	Br	fine	5%	✓	Damp
30			1	Br	sd	2%	✓	lc
31			1	Br	fine	2%	✓	Damp
32			1	Br	fine	5%	✓	Damp
33			1	Br	fine	2%	✓	Damp
34			1	Br	fine	2%	✓	Damp
35			0.3	Gy	sd	5%	✓	loose float
36			0.6	Gn	sd	2%	X	FRZ

SOIL SAMPLES

MAP (PHOTO) NO. 115 G-9

PG. _____

ATLAS EXPLORATIONS

PROJECT Victor OakSAMPLER GLASSDATE 22/7/70

SAMPLE NO.	LINE	STATION	DEPTH HORIZON	COLOR	TEXTURE	ORGANIC MATTER	FLOAT	NOTES (O/CPS., WETNESS, ETC.)
33637			1	Br	Coarse	2%	✓	Dry
38			1.5	Br	"	"	"	"
39			0.6	Bv	"	"	"	DRY
40			1	"	"	"	"	"
41			0.6	Red Br	Fine	2%	✓	TALUS SLOPE
42			0.6	Red Br	Fine	2%	✓	" "
43			0.3	"	"	1%	✓	" "
44			1	Gy Br	"	1%	✓	DRY

SOIL SAMPLES

MAP (PHOTO) NO. 11569

PG. _____

ATLAS EXPLORATIONS

PROJECT Victor OexSAMPLER GLASSDATE 22/7/70

SAMPLE NO.	LINE	STATION	DEPTH HORIZON	COLOR	TEXTURE	ORGANIC MATTER	FLOAT	NOTES (O/CPS., WETNESS, ETC.)
33845	WIDTH 5	FLOW M	TEXTURE st	ORG. +				
46	5		I	red brn	sd	+	✓	DRY
47			I	Br	sd	+	✓	Damp
48			I	"	"	+	✓	DRY
49			0.8	"	"	+	✓	Damp
50			0.6	"	"	+	✓	DRY
Silt 51	WIDTH 6	FLOW M	TEXTURE sd	ORG 0				
52			0.6	Br	Coarse	+	✓	DRY

SOIL SAMPLES

MAP (PHOTO) NO. 11569

PG. _____

ATLAS EXPLORATIONS

PROJECT Victor OexSAMPLER GLASSDATE 22/7/70

SAMPLE NO.	LINE	STATION	DEPTH HORIZON	COLOR	TEXTURE	ORGANIC MATTER	FLOAT	NOTES (O/CPS., WETNESS, ETC.)
33653			0.6	Red Br	sd	+	✓	TALUS SLOPE
54			"	"	"	++	✓	" "
55			"	"	r	+	✓	" "
56			"	"	"	+	✓	" "
57			"	"	"	+	✓	" "
58			1	"	"	+	✓	DRY
59			0.8	"	"	+	✓	"
60			0.6	Br	fine	+	✓	DAMP

SOIL SAMPLES

MAP (PHOTO) NO. 115 69

PG. _____

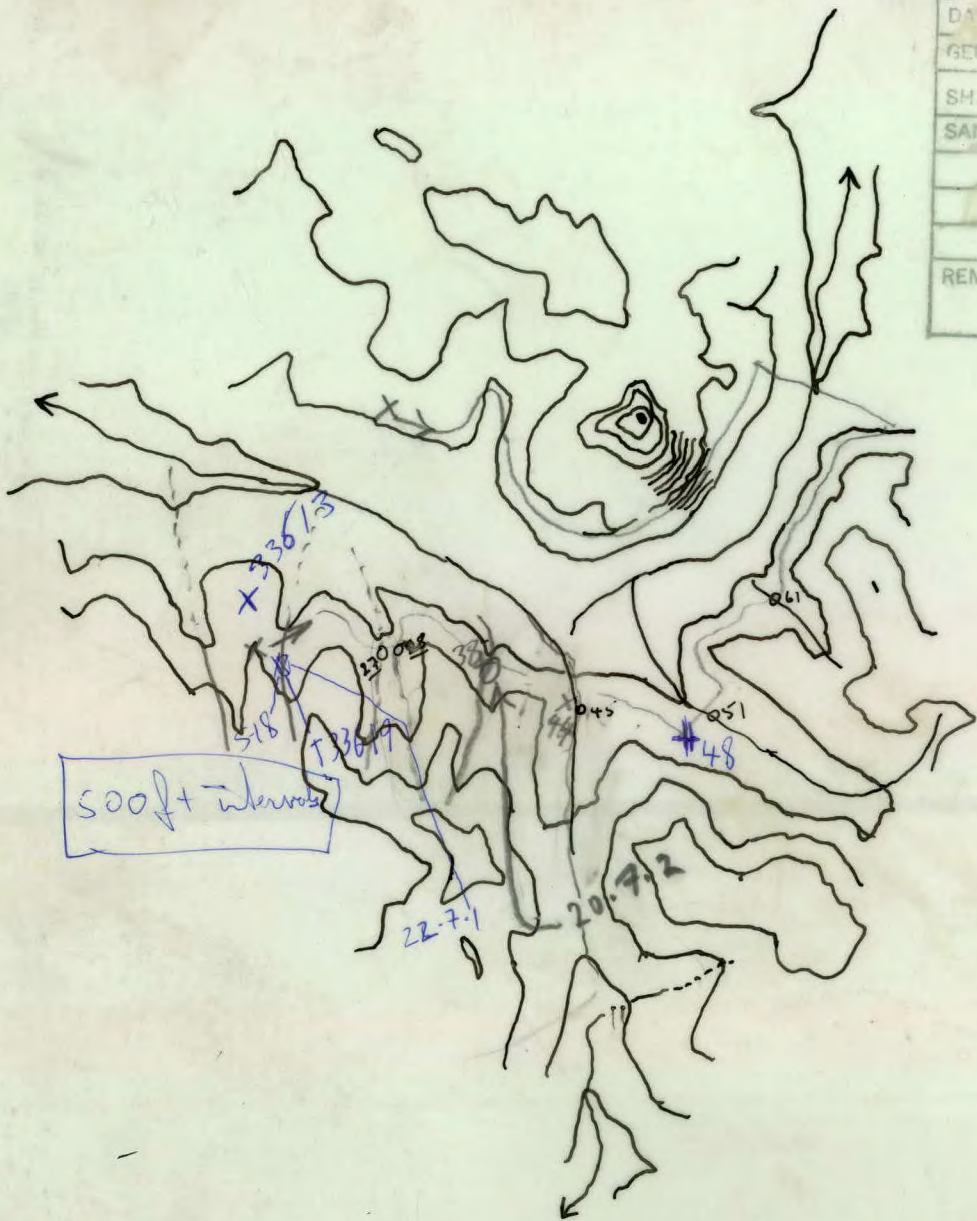
ATLAS EXPLORATIONS

PROJECT Victor Dex SAMPLER GLASS DATE 22/7/70

SAMPLE NO.	LINE	STATION	DEPTH HORIZON	COLOR	TEXTURE	ORGANIC MATTER	FLOAT	NOTES (O/CPS., WETNESS, ETC.)
33661	WIDTH 3	FLUW n	TEXTURE sd	ORG. O				
62			1	Gy	Sd	+	✓	loose talus below 1 ft
63			1	Gy	Sd	+	✓	DRY
64			1	Br	Estane	+	✓	Dmp
65			0.8	Br ^G	Sd	+	✓	"
66			0.9	"	"	"	"	"
67			0.6	Gy	Sd	+	✓	FRZ

ZZ

SAMPLE NO.	S 33613 to S 33
N.T.S.	11569
PHOTO	
SAMPLER	GLASS
PROJECT	Victor Oer
SCALE	1 in = 1 mi
DATE	22/7/70
GEOGRAPHIC LOCATION	NW 11569
SHEET	
SAMPLE NO. PLOTTED	
SPTS PLOTTED	
VALUES	
GEOLOGY	
REMARKS:	



Rock
Samples
22.7.1 to 22.7.2

SILT SAMPLES

MAP (PHOTO) NO. 156-839PG. 1

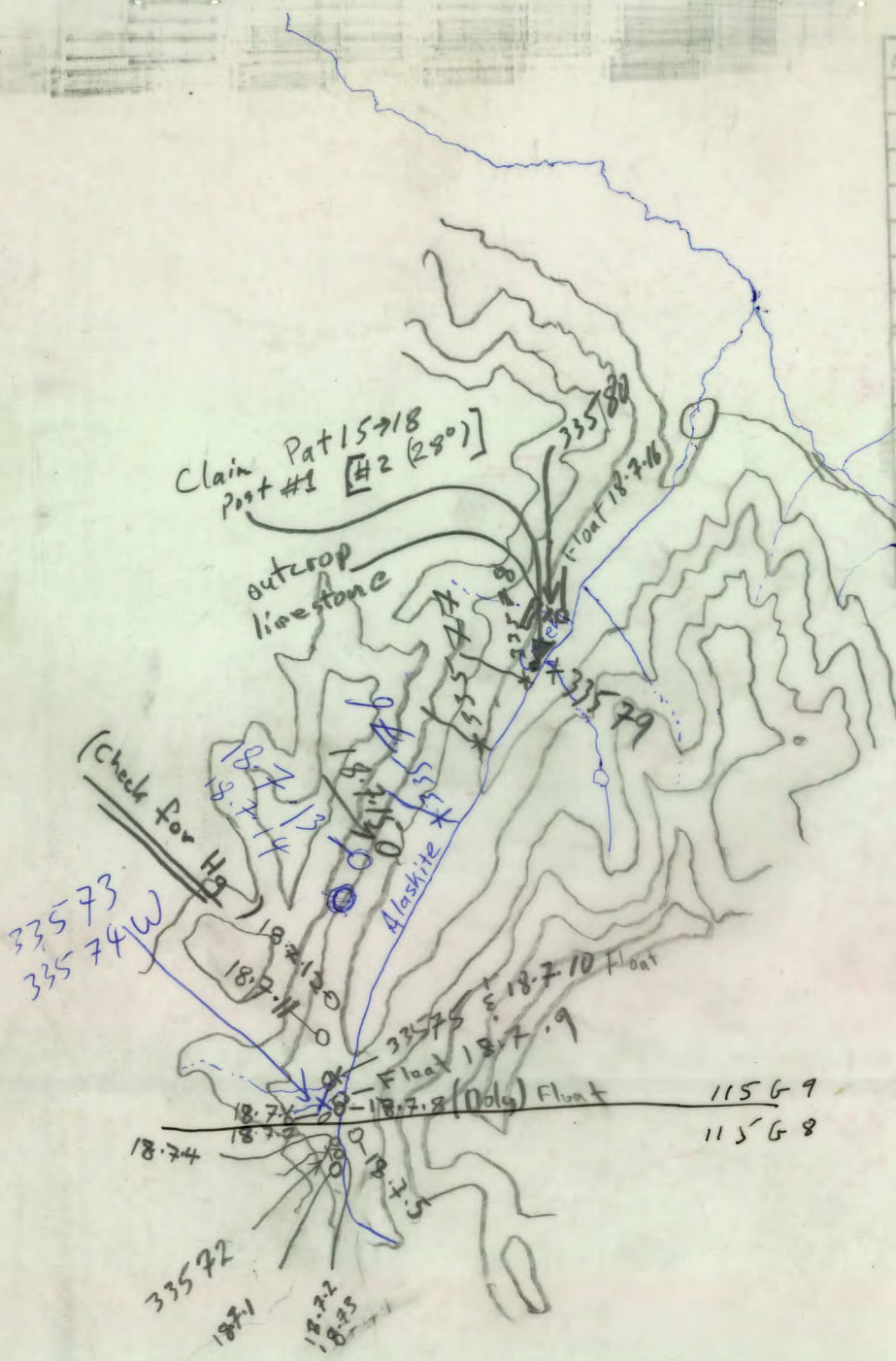
ATLAS EXPLORATIONS

PROJECT Victor CoxSAMPLER GLASSDATE 18/7/70

SAMPLE NO.	STREAM WIDTH	FLOW	SAMPLE TEXTURE	ORGANIC MATTER	FLOAT	OUTCROP	NOTES (STAINS, COLOR, SEEPAGES, ETC.)
33572	2	M	sd	0			
73	1	M	st	+			DRAIN GOSSAN
74	Water		Watery				
75	5	F	sd	0			
76	1	S	sd	0			
77	1	S	sd	+			
78	1	S	sd	+			
79	4	M	sd	+			

SAMPLE NO. T-33572 - T33580
 N.T.S. 115 G 8 & 9
 PHOTO
 SAMPLER GLASS
 PROJECT: Victor Oex
 SCALE: 1 mi. = 1 in
 DATE: 18/7/70
 GEOGRAPHIC LOCATION: 10 mi S. Tyrrell Camp. Alaskite Creek

SHEET	DATE	IN/PL
SAMPLE LOG PLOTTED	X	
VALUES		
GEOLOGY		
REMARKS		



Rock Samples
 18-7-1 to 18-7-16

SILT SAMPLES

MAP (PHOTO) NO. TRAV #50

11569.

PG. 1

ATLAS EXPLORATIONS

PROJECT NISLING

SAMPLER R. Towerson

DATE July 3/70

SAMPLE NO.	STREAM WIDTH	FLOW	SAMPLE TEXTURE	ORGANIC MATTER	FLOAT	OUTCROP	NOTES (STAINS, COLOR, SEEPAGES, ETC.)
31655	1'	M	sd	-	}		granite, mica sch, basalt, feldsp, andesite, columnar has some nodules @ goss
56	1'	M	sd	-			
57	2'	M	sd	-			
58	2'	M	sd	-			
59	1'	S	st	++			
60	2'	F	st	-	bas, andes, breccia?	some goss 2700	
61	2'	M	sd	-	gn, bas	baodyke nomia	3400
62	1'	dry	sd	-	-		3000
63	1'	S	st	-	gn		3700

SILT SAMPLES

MAP (PHOTO) NO. _____

PG. 2

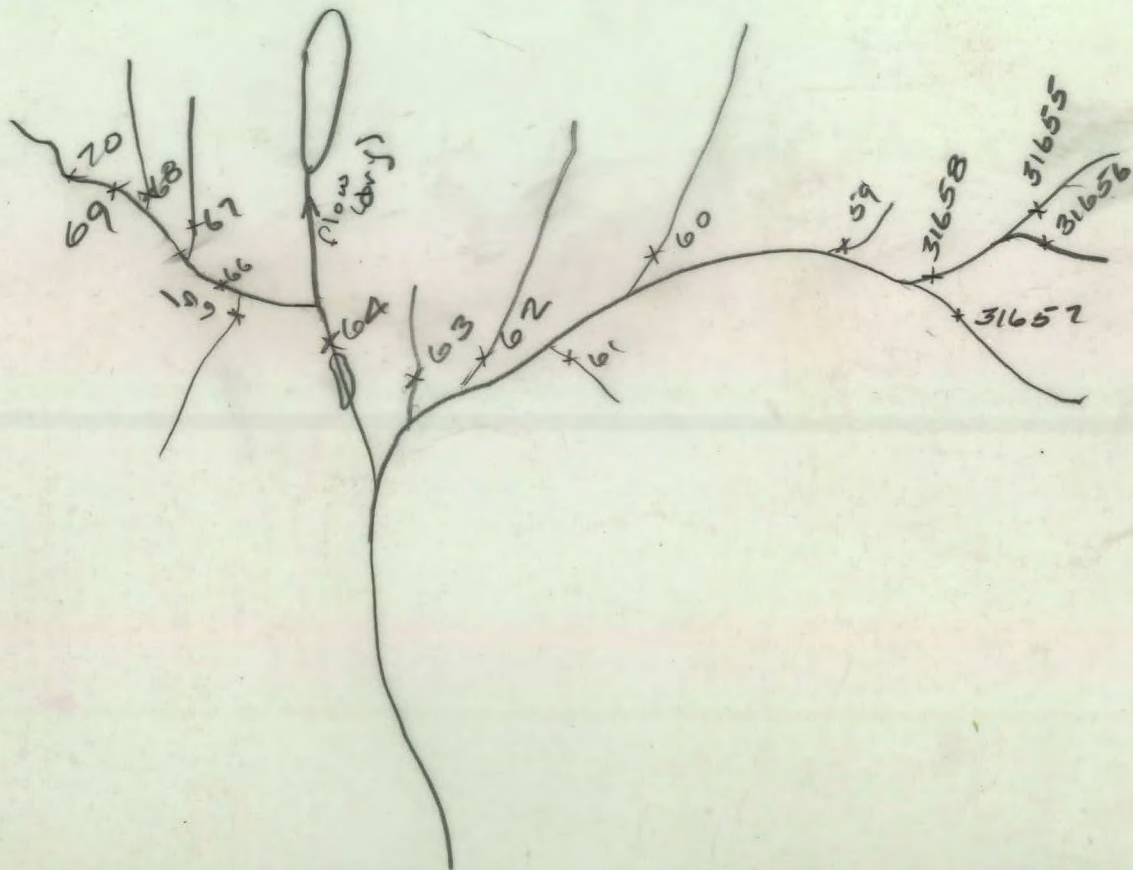
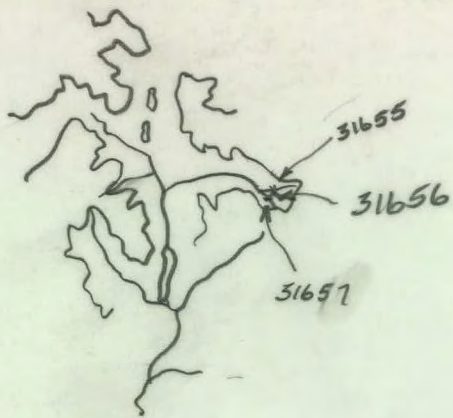
ATLAS EXPLORATIONS

PROJECT NislingaSAMPLER R. TownsendDATE July 3/70

SAMPLE NO.	STREAM WIDTH	FLOW	SAMPLE TEXTURE	ORGANIC MATTER	FLOAT	OUTCROP	NOTES (STAINS, COLOR, SEEPAGES, ETC.)
31664	3'	S	sl	-	qtz por gran		just above small pk
65	3'	M	sd	-	qtz por bas		
66	5'	M	sd	-	"		main stream
67	2'	M	sl	-	bas qtz por		qtz por. 7800 some gessoon
68	4'	F	sl	-			8200
69	5'	M	sd	-	gran, basalt qtz por		rusty o/c 8600
70	5'	F	sl	-	gran to alve		8800 very rusty

110 G 9

Tyrrel Cr
(South)



free-hand

SILT SAMPLES

MAP (PHOTO) NO. _____

PG. _____

ATLAS EXPLORATIONS

PROJECT VICTOR OEX N^{ISSLING} SAMPLER W. HAMILTON DATE JULY 4/67

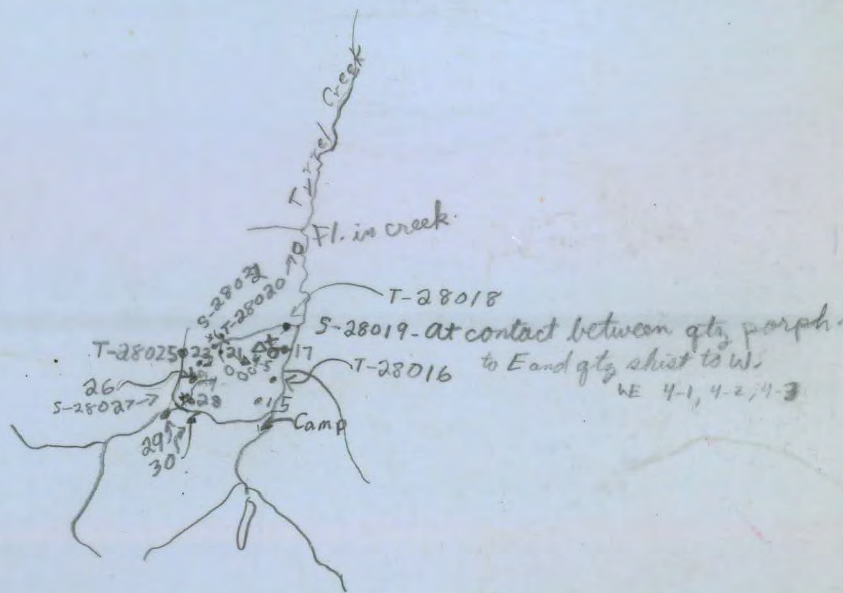
SAMPLE NO.	STREAM WIDTH	FLOW	SAMPLE TEXTURE	ORGANIC MATTER	FLOAT	OUTCROP	NOTES (STAINS, COLOR, SEEPAGES, ETC.)
T-28015	0.5	S	ST	0	Alaskite	None	
T-28016	0.5	S	ST	0	—	—	Seepage - From Pool
T-28017	1.0	m	ST	0	—	—	
F-28018	4.0	m	ST	0	Alaskite + Qtz. Pch.	None here Yukon GP	
S-28019	—	—	—	—	—	—	Soil Sample at Contact of qtz sheet & qtz porphy outcrops
T-28020	1.0	S	ST	+	Qtz porph	—	
T-28021	1.5	m	ST	0	"	—	
S-28022	—	—	—	—	—	—	Soil Sample of rusty soil 60 feet above creek.
T-28023	1.0	m	ST	+	"	—	

Misling River

Dwart Birch Creek

Walter Hamilton
July 4/1970, Tyrroll Creek Camp

- = Silt Sample
- X = Soil Sample
- o = alaskite or qtz porph.
- Δ = qtz schist + muscovite qtz schist



July 20, Walter Hamilton Traverse to 11569, 6-10, 6-15. Pg 1
The float initially was 70% felspar porphyry, 30% Y.G., this
being primarily biotite schist with some quartzite.
There is an outcrop 600 feet NW of the 1st sample 28244.
Walked thru. It is qtz, biotite schist. Strike 130° Dip 30° N

Rock 20-1. 1500' to West on the ridge is another outcrop
of qtz biotite schist S = 110°, D = 30° N.
Walked NW on ridge to next creek Sort of boggy seep. pH.
Neutral. Got silt #245 just where the creek goes through the
topographical dike before dropping sharply in elevation. The
float rocks in the creek are stained very very red.

The float is 60% Granite (felspar, qtz, biotite, ^{or} medium textured)
30% qtz porphyry or fels qtz porphyry + 10% Y.G. & biotite
schist mostly, some quartzite. The rocks loose on
the topographical dike to the North are mostly
Granite with a few quartzites. South ^{side} is similar
Some rusty Y.G. rocks without mineralization.

Continuing South on ridge 100' there is Rock 20-2 and 20-3,
felspar porphyry & rusty cavities ^{minor} unknown hard
blue-grey mineralization. another 100 feet, Rock 20-4,
rusty fine grained granite & very minor Pyrite.
Occasional rusty Yukon Group rocks for next 1500' to top
of ridge, & minor Pyrite + one with finely disp. pyrochlore - at
ridge quartz muscovite schist outcrop S. 80°, D. 30° N.

Going W on main ridge it is mostly loose Granite. Crossed main
creek. Crossed ridge, all O.P. Next creek, silt 28247 has
all float rocks stained very red. Pyrite found in

Syenite float
Granite, 20% qtz porphyry or qtz fels. fels. qtz
porp. & very white fels. phenos.
10% Y.G.

Plotted

TECHNICAL SERVICE LABORATORIES

355 King St., West, Toronto 2B

Ontario

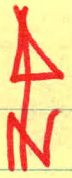
TSL LABORATORIES LTD.

325 Howe St., Vancouver 1

British Columbia

Use O.B. examine the main creek to get salt 28250
 which has 70% Y.G. plant in most as far as 30% granite.
 a Rusty dark green very fine grained rock
 (hypothetical) was found with pyrite + Fe. P. 20-67
 20-7.
 Rocks 20-6 to 20-7 massive are all plant on the
 creek + all are mineralized by pyrite, some heavily;
 Rusty occurs in Yukon Group - little about + in
 the dark green gray shaly. Hypothetical? or similar
 to be with shaly to indicate the nature of the
 mineralization - perhaps some chert about.
 Although 10% of the plant contains manganese
 the rusty rocks.
 20-18 - Granite about a work area west
 mineral. In general, the creek # 25 salt has much less
 by in Y.G. or not at all 20-18. However, found rock of
 type similar to 20-10-11 (the really mineralized area)
 believed to be quartzite. Another lot of Fe. Rocks
 rather than shaly. 20-19/20/21

R. Blake.



400 paces = 1000'

115 a-9

May 28 / 70

Traverse #1



Locations plotted - June 1st

Results plotted June 3 G.P.

May 28/70
11569

mm

mm

mm

PACES	SAMPLE NUMBER	NOTES
00	B-1	CREEK BED - DRY
350	B-2	" "
350	B-3	SILT OF STREAM FLOWING FROM WEST SOUTH
1200	B-4	SILT FROM MAIN STREAM
1200	B-5	SILT OF STREAM FLOWING FROM SOUTH - EAST
1600	B-6	SILT FROM MAIN STREAM - DRY
1600	B-7	SILT FROM STREAM FLOWING EAST
1600	B-8	ROCK ^{CHIP} SAMPLES AT ^{JUNCTION} SIGHT OF B-6 & B-7 - RED
2000	B-9	SILT FROM MAIN STREAM
2000	B-10	ROCK CHIP SAMPLE FROM SAME AREA AS B-9.
2100		SLIDE AREA - RUST COLORED GRANITE - QUARTZ, MICA SCHIST.?
2200	B-11	SILT FROM MAIN CREEK
2200	B-12	SILT FROM CREEK FLOWING FROM WEST EAST
2250	B-13	ROCK CHIP SAMPLE FROM CREEK BED - POSSIBLE MINERALIZATION
2600	-	CREEK BED - RED COATING
3500	B-14	SILT FROM MAIN CREEK - DRY
3500	B-15	SILT FROM CREEK FLOWING FROM WEST (ORGANIC)
3500	B-16	SILT FROM CREEK FLOWING FROM EAST - DRY
4500	B-17	SILT SAMPLE OF MAIN CREEK - DRY (BED OF CREEK MAINLY RED)
4800	B-18	SILT FROM CREEK FLOWING FROM WEST (ORGANIC)
5400	B-19	SILT FROM CREEK FLOWING FROM WEST
5400	B-20	SILT FROM MAIN CREEK
5600	B-21	SILT FROM MAIN CREEK FLOWING FROM WEST
5600	B-22	SILT FROM MAIN CREEK
6000	B-23	SILT FROM CREEK FLOWING FROM EAST.
6400	B-24	SILT FROM CREEK FLOWING FROM WEST
6800	B-25	SILT FROM CREEK FLOWING FROM EAST
6800	B-26	SILT FROM MAIN CREEK
7400	B-27	" " " "
7400	B-28	SILT FROM STREAM FLOWING FROM EAST.
7450	B-29	SILT FROM STREAM FLOWING FROM WEST
7450	B-30	SILT FROM MAIN STREAM
7700	B-31	" " " "
21000		sample

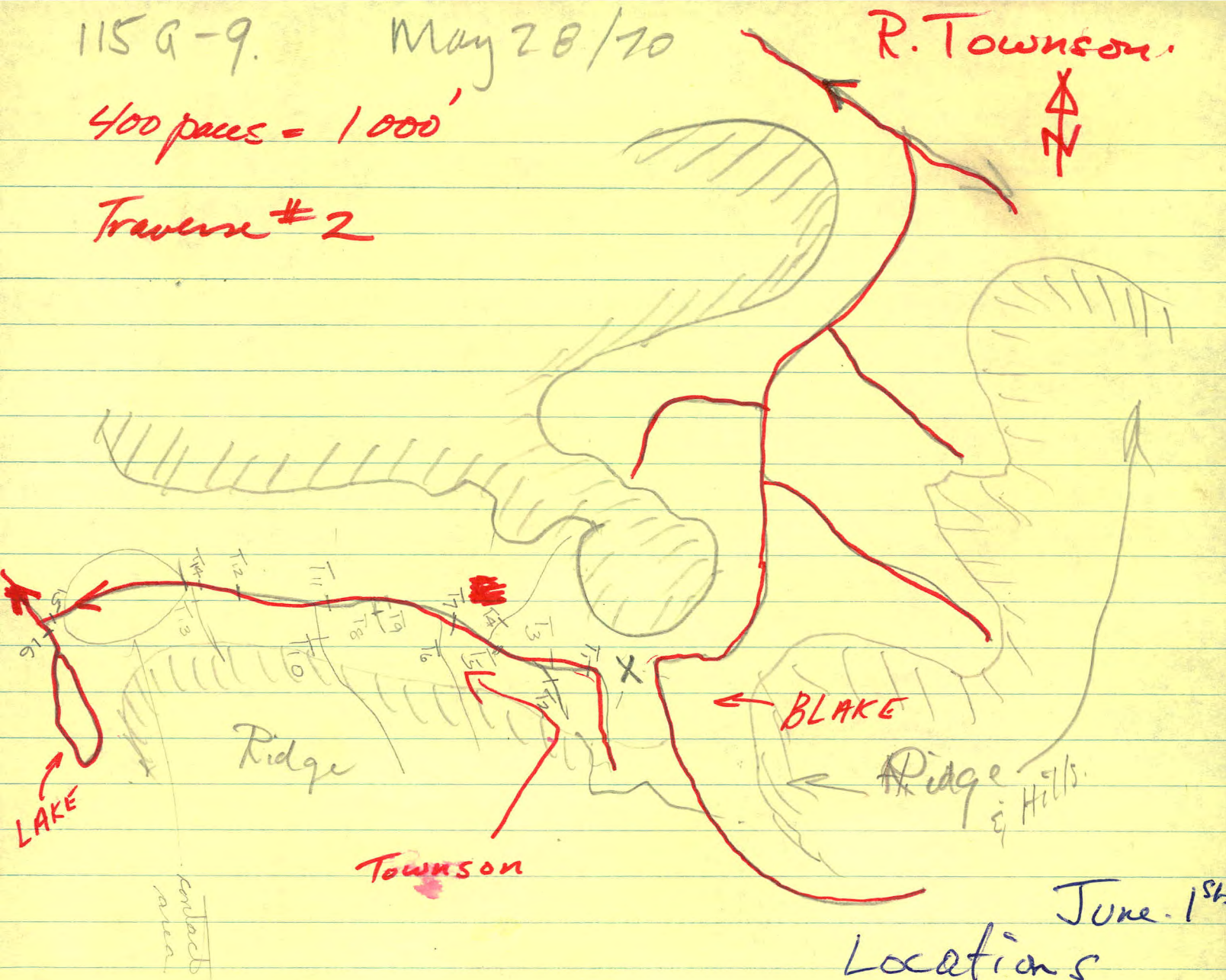
115 G-9.

May 28/70

R. Townson.

400 paces = 1000'

Traverse #2



June 1st

Locations

Plotted

G.H.K.P.

Results plotted

June 3 G.P.

SAMPLE	DISTANCE (paces)	COMMENTS
1	0	drop off.
2	400	s.s. from south
3	"	main s.
4	1300	s.s. from N.
5	"	main
6	1600	ss from S - coarse gravel, some stain - schist or phyllite
7	1600	main - slight galena min.?
8	2350	dip str bed from S
9	"	ms
10	3500	3' creek from S
11	"	MS
12	5900	MS
13	6500	ss from S - rust stain in cr
14	"	MS
-	6800	outcrop - mica schist → quartz veins → (W) rust stain → schist → basalt → epidote → porphyry → schist
15	8100	ms - junction
16	"	ss -