

SILT SAMPLE

013080

MAP (PHOTO) NO.

PG.

ATLAS EXPLORATIONS

PROJECT

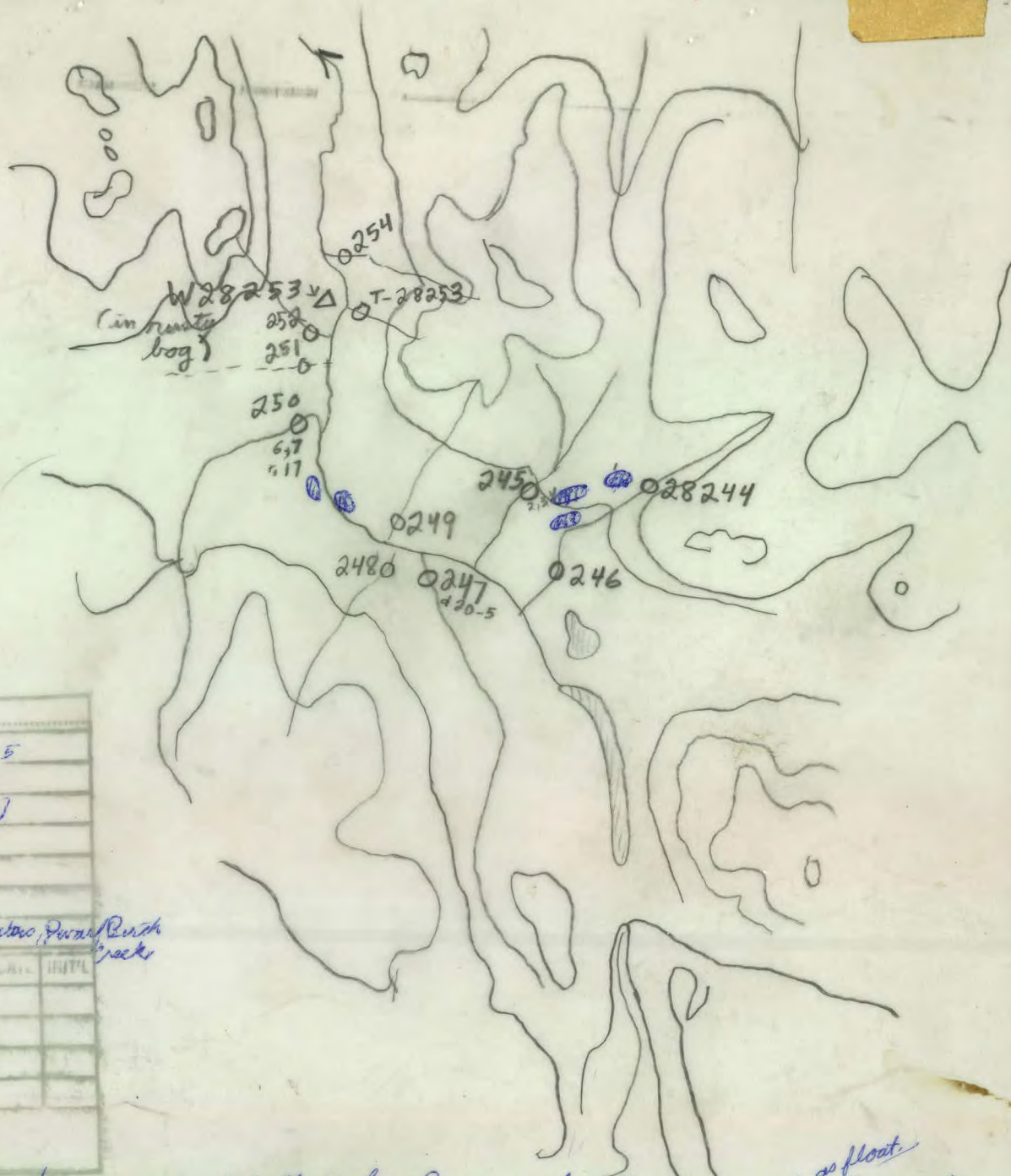
SAMPLER


W. HAMILTON

DATE

July 25/70

SAMPLE NO.	STREAM WIDTH	FLOW	SAMPLE TEXTURE	ORGANIC MATTER	FLOAT	OUTCROP	NOTES (STAINS, COLOR, SEEPAGES, ETC.)
28244	3.0	S	ST	+	Feldspar Porph. 70% Y.G. 30%		
245	3.0	S	ST	+	Gr. 60%, Porph. 30% Y.G. 10%		Very red stained float
246	4.0	m	ST	—	Gr 60% porph 30 Y.G. 10.		
247	4.0	m	ST	—	Syenite 35% Gr. 25% Qtz-porph. 20% Y.G. 10%		Some Py. in Syenite all rocks very rusty stain
248	2.5	m	ST	—	Gr. 95% Y.G. 5%		Sample taken above ground
249	0.5	S	ST	+	—	—	Seep in Moss. No red streambed
250	4.0	m	ST	—	70% Y.G., 30% Gr.		Pyrite & Pa. in rusty volcanic gobs of Py in all float by me
251	7.0	s	ST	—	70% Gr. 30% Y.G.		
252	1.0	m	ST	—	—	—	



 = quartz diorite schist outcrops
11569, G10, G15

SAMPLE No.	28244
N.T.S.	11569, G10, G15
PHOTO	
SAMPLER	W. HAMILTON
PROJECT:	VICTOR DEY
SCALE	1 in. = 1 mi
DATE:	July 20, 1970
GEOGRAPHIC LOCATION:	Headwaters, Puvungnuak Creek
SHEET	1 of 1
SAMPLE LOC PLOTTED	
VALUES "	
GEOLOGY "	
REMARKS:	

Traverse 70 - All creeks contained both Yukon Group and intrusive rocks. ^{float} 5 quartz mica schist outcrops are marked. Creeks 245 and 247 both had rocks stained very red. Creek 250 contained considerable Pyrite in the float - especially in a silicious propylitic rock but also in andesite & biotite schist. Creek 251 also had float & Pyrite in the same silicious propylitic rock. Water 253 taken at a rusty bog near the creek. All samples were negative in the field Cold Cu test.

SILT SAMPLES

MAP (PHOTO) NO. 115 G-10+15

PG. _____

ATLAS EXPLORATIONS

PROJECT Victor OexSAMPLER GLASSDATE 23/7/70

SAMPLE NO.	STREAM WIDTH	FLOW	SAMPLE TEXTURE	ORGANIC MATTER	FLOAT	OUTCROP	NOTES (STAINS, COLOR, SEEPAGES, ETC.)	
33668	10	M	sd	++				
69	2	S	st	+				
70	1	S	sd	+				
71	3	S	sf	++				
72	4	S	st	+				
73	3	S	sd	+				
74	5	M	sd	0				
		OVER						

SAMPLE No.	33668	to	33679
N.T.S.	115 G 15 E 10		
PHOTO			
SAMPLER	N. GLASS		
PROJECT:	VICT. OLEX		
SCALE	1" = 1 mi		
DATE:	23 / 70		
GEOGRAPHIC LOCATION:	Above Talbot Cr		
SHEET	of	CAGE	UNIT
SAMPLE LOC PLOTTED			
VALUES	"		
GEOLOGY	"		
REMARKS			

2

