

DYNASTY

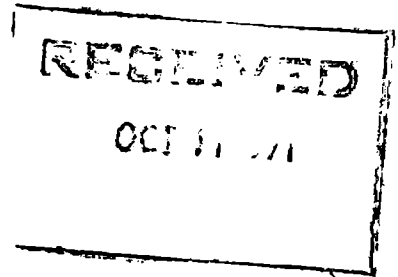
013093

TRIGG, WOOLLETT & ASSOCIATES LTD.

CONSULTING GEOLOGICAL ENGINEERS

1404 CAMBRIDGE BLDG.
10020 JASPER AVENUE
EDMONTON, ALBERTA
(403) 429-6277

October 1, 1971



IMPERIAL OIL ENTERPRISES LTD.

MAX GROUP, YUKON TERRITORY

EXPLORATION PROGRESS, SEPTEMBER 1 TO SEPTEMBER 30, 1971

SUMMARY

Drill hole 71M-4 was completed to 360 feet in September. Assays (for recoverable MoS_2) for holes 71M-3 and 71M-4 in all but three cases are less than 0.10 percent MoS_2 .

Eight claims were staked to cover open portions of grid 1 and grid 3. Title to the claims has not yet been received.

Report writing is nearly complete.

DIAMOND DRILLING

Hole 71M-4 was completed to 360 feet. Assay results for holes 71M-3 and 71M-4 are summarized in Table I.

Hole 71M-4 was drilled to test beneath occurrence HI-4 (molybdenite in quartz monzonite). The hole encountered quartz monzonite or altered quartz monzonite throughout, except for three feet of felsite dyke from 337 to 340 feet. Only a few molybdenite bearing quartz veins were encountered.

Disseminated pyrite and pyrrhotite may have caused the induced polarization anomaly on line 8+00E.

Four holes (71M-1 to 71M-4) totalling 1501 feet, were drilled during the drilling program which was completed September 10, 1971.

CLAIM LOCATION

Eight claims were staked to cover open portions of grid 1 and grid 3 (Dwg. 11M-1). Four claims (Max 401 to 404) extend west from 10+00E, 0+00 in grid 1. Four claims (Max 405 to 408) are located in the southern portion of grid 3.

TABLE IDIAMOND DRILLING SUMMARY - SEPTEMBER, 1971

<u>HOLE</u>	<u>LOCATION</u>	<u>AZIMUTH</u>	<u>DIP</u>	<u>LENGTH</u>	<u>INTERSECTION</u>				
					<u>From</u>	<u>To</u>	<u>Length</u>	<u>% Cu</u>	<u>% MoS₂</u>
71M-3	Grid 1 4+00W 6+50S	180°	-55	330 feet (Completed in August)	133	136	3	.02	.009
					136	139	3	.02	.015
					139	142	3	.03	.007
					283.6	285.6	2	.03	.007
					285.6	286.6	1	.02	.145 ✓
					286.6	288.6	2	.02	.023
					314	316	2	.03	.006
					316	317	1	.03	.276 ✓
					317	319	2	.03	.008
71M-4	Grid 1 6+00E 2+50N	000°	-45	360 feet	330	332	2	.02	.013
					332	333	1	.02	.802 ✓
					333	335	2	.02	.022

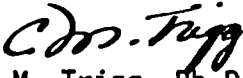
The claims were recorded in Whitehorse, Y.T. on September 15, 1971. Title to the claims has not yet been received. The claims will be transferred to Imperial Oil Enterprises Ltd. upon receipt of title.

GENERAL

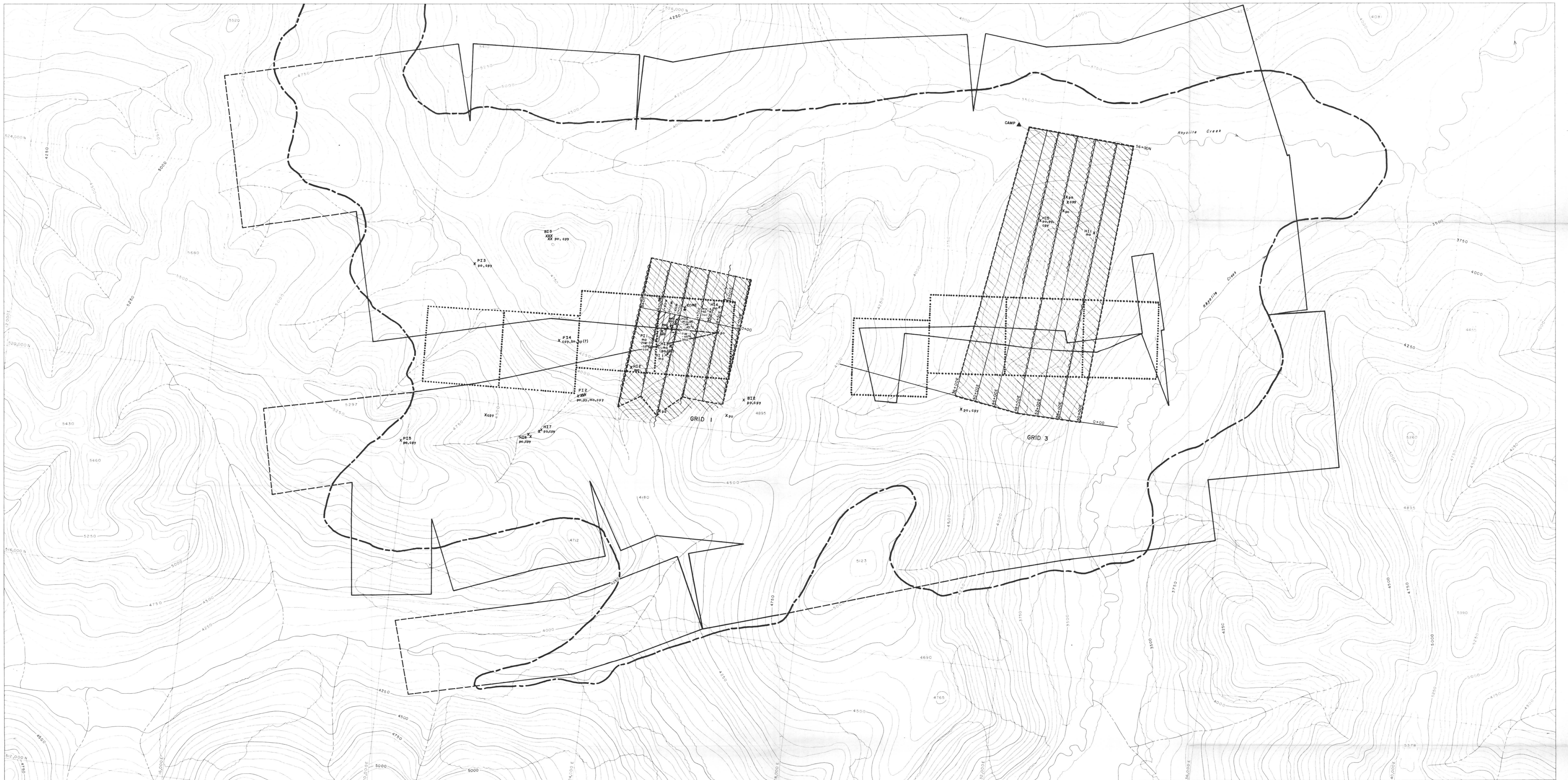
Field work was completed September 11, 1971.

Report writing is nearly complete.

Trigg, Woollett & Associates Ltd.


C. M. Trigg, Ph.D., P.Eng.

October 1, 1971
Edmonton, Alberta



NOTE: ARBITRARY GRID BASED ON U.T.M. ZONE 8

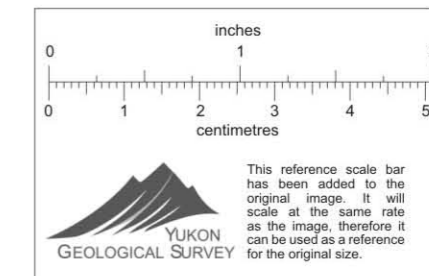
Topography compiled by
Northwest Survey Corp. Ltd.
 Edmonton, Grande Prairie, Yellowknife, Whitehorse



LEGEND

- TREE AREA
- INTERMITTENT STREAM
- CONTOURS (Interval 50 feet)
- SPOT ELEVATION
- 1971 GRID LINE
- CLAIM BOUNDARY (Known, assumed)
- AREA PROSPECTED
- CLAIM BOUNDARY STAKED 1971

- MINERAL OCCURRENCE AND NUMBER**
- HI1 BORNITE
- bn SPHALERITE
- sp MOLYBDENITE
- mo PYRRHOTITE
- py PYRITE
- cpy CHALCOPYRITE
- AREA COVERED WITH GEOCHEMISTRY
- AREA MAPPED ON 1"=100' SCALE
- AREA MAPPED ON 1"=400' SCALE
- LINES COVERED WITH INDUCED POLARIZATION
- DIAMOND DRILL HOLE; NUMBER, DIP, DIRECTION AND LENGTH



EXPLORATION PROGRESS TO SEPTEMBER 11, 1971

IMPERIAL OIL ENTERPRISES LTD.

MAX GROUP

RHYOLITE CREEK, Y.T.

SCALE 0 400 800 1600 2400 FEET

TRIGG, WOOLLETT & ASSOCIATES LTD.

EDMONTON, ALBERTA OCTOBER, 1971