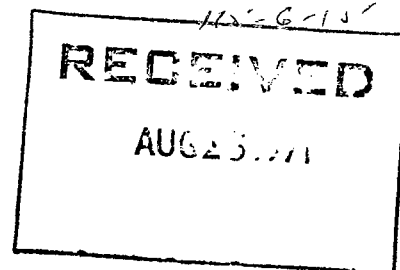


TRIGG, WOOLLETT & ASSOCIATES LTD.

CONSULTING GEOLOGICAL ENGINEERS

1404 CAMBRIDGE BLDG.  
10020 JASPER AVENUE  
EDMONTON, ALBERTA  
(403) 429-8277

August 6, 1971



013095

IMPERIAL OIL ENTERPRISES LTD.

MAX GROUP, YUKON TERRITORY

EXPLORATION PROGRESS JULY 1 TO JULY 31, 1971

SUMMARY

A small part of grid 1 (400 feet by 600 feet) was surveyed by transit, tape and altimeter.

Four mineral occurrences were located during geological mapping and prospecting of grid 1 and grid 3.

Geological mapping of grid 1 and grid 3 is complete.

An induced polarization survey, totalling seven line miles was completed. A slight chargeability response was recorded over HI3, HI6 occurrences. Chargeability responses were obtained over pyrrhotite concentrations in quartzite.

Geochemical sampling was completed on grid 1 and grid 3. Analytical results were received August 3, 1971.

Diamond drilling should begin August 6, 1971.

SURVEYING

An area from 0+00 to 4+00W and from 0+00 to 6+00S within Atlas grid 1 was surveyed by transit, tape and altimeter. Lines were spaced at intervals of 100 feet; stations along the lines were positioned every 50 feet.

PROSPECTING

Four occurrences were located during the course of geological mapping and prospecting of grid 1 and grid 3. The occurrences are plotted on drawing 1IM-1 and summarized in Table I.

TABLE I  
MINERAL OCCURRENCES - MAX GROUP

<u>NUMBER</u>	<u>LOCATION</u>	<u>MINERALIZATION</u>	<u>ROCK TYPE</u>	<u>COMMENTS</u>
HI5	Grid 3 45+00E, 36+00N	Pyrrhotite, chalcopyrite	Disseminated in quartz talus	Only trace chalcopyrite; estimated up to 4% pyrrhotite
HI6	Grid 1 0+40W, 3+00S	Molybdenite	Fractured and quartz veined quartz monzonite and quartzite	MoS <sub>2</sub> along quartz veins and fractures. Best grab sample estimated at 2.0% Mo
PI1	Grid 1 3+70W, 5+80S	Molybdenite	Quartzite	MoS <sub>2</sub> in narrow quartz veins and fractures. Best grab sample 1.0% Mo
BI1	Grid 1 0+35E, 7+20S	Molybdenite	Quartzite talus	MoS <sub>2</sub> in narrow quartz veins and fractures. Best grab sample 0.5% Mo

Occurrence HI6 is similar to HI3 which exists about 250 feet south of HI6. Several narrow quartz veinlets traverse an outcrop of quartz monzonite which is about 80 feet by 50 feet. Molybdenite exists along the margins of quartz veins, on fractures, and locally as disseminations within the quartz monzonite near mineralized fractures. A basic dike cuts the quartz monzonite.

#### GEOLOGICAL MAPPING

Geological mapping at a scale of 1 inch equals 400 feet has been completed on grid 1 and grid 3.

Geological mapping at a scale of 1 inch equals 100 feet has been completed for the transit surveyed portion of grid 1.

#### INDUCED POLARIZATION SURVEY

Peter E. Walcott & Assoc. Ltd. performed four line miles of I.P. survey on grid 1 and three line miles of I.P. survey on grid 3. The surveyed lines are illustrated on drawing IIM-1.

A slight chargeability response was recorded over the HI3, HI6 occurrences, grid 1, utilizing electrode spacings of 100 feet. Slight chargeability responses were recorded at 4+00W, 7+00S, grid 1, at electrode spacing of 400 and 600 feet.

Chargeability responses were recorded over pyrrhotite concentrations in quartzite on both grid 1 and grid 3.

No differences in resistivity exists between quartz monzonite and quartzite. It is therefore impossible to deduce the extent of quartz monzonite on the basis of resistivity.

#### GEOCHEMICAL SURVEYING

One hundred and six soil samples were collected from grid 1 and 171 soil samples were collected from grid 3. The samples were collected at intervals of 200 feet along lines 400 feet apart.

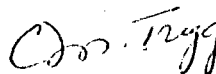
Samples were shipped to the Imperial Oil Limited Prod. Research & Tech. Service Lab, Calgary. Analytical results were received August 3, 1971.

#### DIAMOND DRILLING

A drill contract for 1500 feet has been let to Arctic Diamond Drilling Ltd. Drilling should commence August 6, 1971 on hole 71M-2.

The collars of 71M-1 and 71M-2 have been spotted; the positions are illustrated on drawing 11M-1 and the pertinent data listed in Table II. The position of remaining holes is dependent upon results of 71M-1 and 71M-2.

Trigg, Woollett & Associates Ltd.

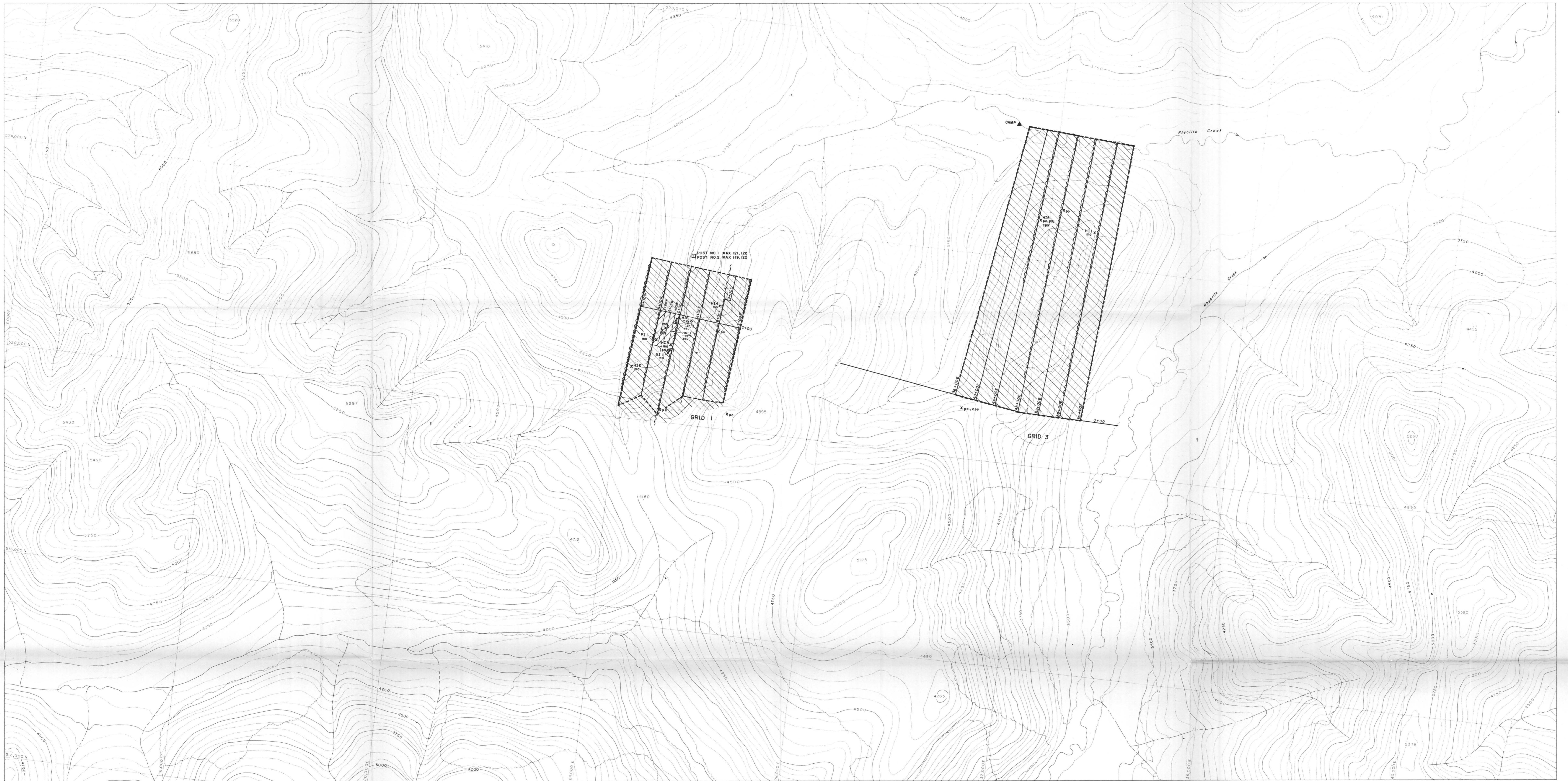


C. M. Trigg, Ph.D., P.Eng.

August 6, 1971  
Edmonton, Alberta

TABLE IIPROPOSED DIAMOND DRILLING

<u>HOLE</u>	<u>LOCATION</u>	<u>AZIMUTH</u>	<u>DIP</u>	<u>LENGTH</u>	<u>REMARKS</u>
71M-1	Grid 1 1+00W, 3+50S	180°	-45°	350 feet	Test MoS <sub>2</sub> mineralization at HI3
71M-2	Grid 1 1+00W, 2+00S	180°	-45°	450 feet	Test MoS <sub>2</sub> mineralization at HI6



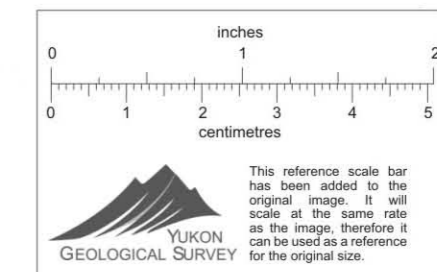
NOTE: ARBITRARY GRID BASED ON U.T.M. ZONE 8



Topography compiled by  
**Northwest Survey Corp. Ltd.**  
 Edmonton, Grande Prairie, Yellowknife, Whitehorse

**LEGEND**

- |  |                             |     |   |
|--|-----------------------------|-----|---|
|  | TREE AREA                   | H1x | MINERAL OCCURRENCE AND NUMBER                         |
|  | INTERMITTENT STREAM         | mo  | MOLYBDENITE   |
|  | CONTOURS (Interval 50 feet) | py  | PYRRHOTITE  |
|  | SPOT ELEVATION              | cpy | CHALCOPYRITE  |
|  | CLAIM POST                  |     |   |
|  | 1971 GRID LINE              |     | AREA COVERED WITH GEOCHEMISTRY                        |
|  |                             |     | AREA MAPPED ON 1"=100' SCALE                          |
|  |                             |     | AREA MAPPED ON 1"=400' SCALE                          |
|  |                             |     | LINES COVERED WITH INDUCED POLARIZATION               |
|  |                             |     | DIAMOND DRILL HOLE; NUMBER, DIP, DIRECTION AND LENGTH |



EXPLORATION PROGRESS TO JULY 31, 1971  
**IMPERIAL OIL ENTERPRISES LTD.**

**MAX GROUP**

RHYOLITE CREEK, Y.T.

SCALE 0 400 800 1600 2400 FEET

TRIGG, WOOLLETT & ASSOCIATES LTD.

EDMONTON, ALBERTA AUGUST, 1971

DWG. IIM-1