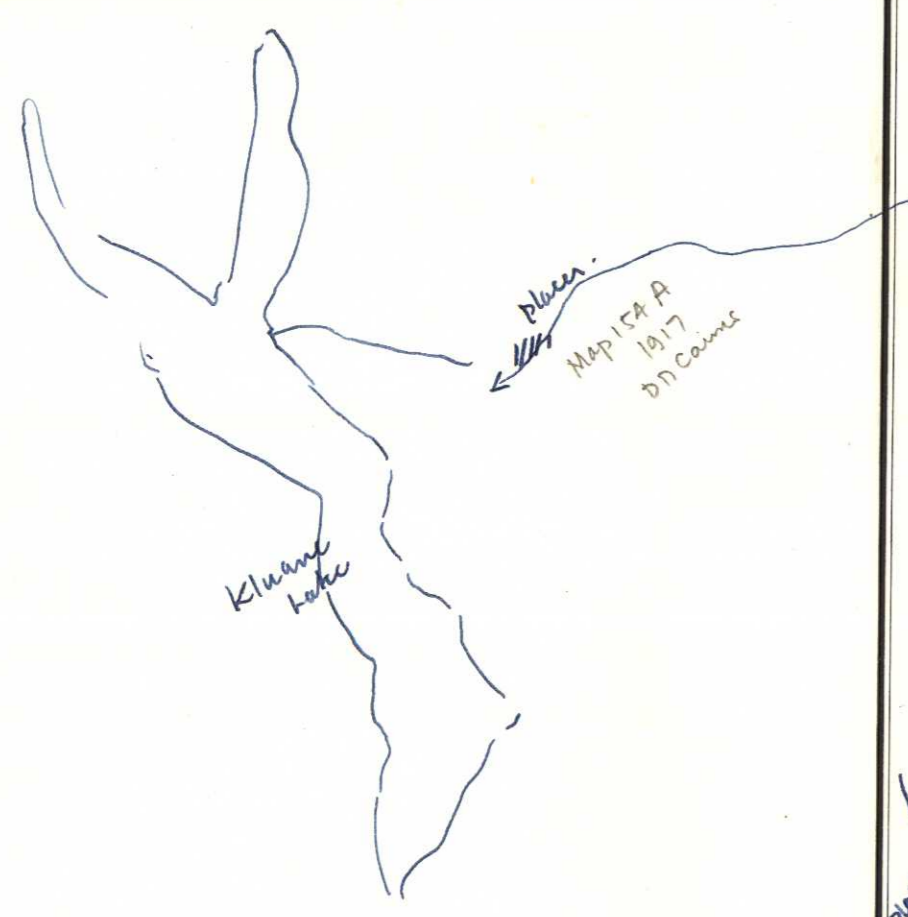
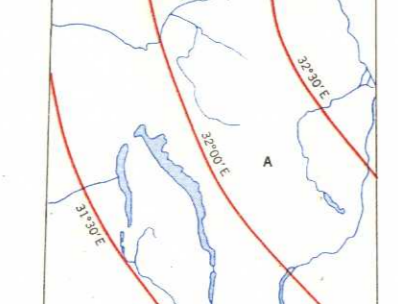


- Carnoebles v. lcs.
- Qtz porphyry etc.
- Coast Intrusions
- Seds.
- Volcs.
- Ykton Gp



THE DECLINATION OF THE COMPASS NEEDLE 1950



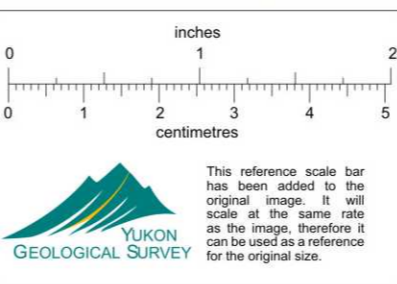
The declination of the compass needle at any place along a red line is the declination given on that red line. At other places the declination is between those given on the neighbouring red lines. At the 1950 meridian the declination is between 32° 00' E. and 32° 30' E. The declination of the compass needle is decreasing 3 1/2 minutes annually.

Compiled by the Topographical Survey 1950, from air photographs taken in 1947 and 1948 by the R.C.A.F. Lithographed and printed by the Army Survey Establishment R.C.E., Department of National Defence, 1952.

REFERENCE

Road, Hard Surface, All Weather	More than 2 Lanes	2 Lanes	Route No.	Less than 2 Lanes
Road, Loose Surface, All Weather	2 Lanes or More	Less than 2 Lanes	Dry Weather	
Road, Special, etc.	Slow Road, Park Route	Cart Road	Portage or Trail	
Boundary, International	Boundary Mon.			
Boundary, Provincial	Survey Mon.			
Boundary, County or District	Bench Mark	BM		
Boundary, Township, Seigneurie or Parish	Triangulation Sta.	151A		
Boundary, Indian Reserves, Park	Spot Elevation (on feet)	4590		
Surveyed Line	Asbestos			
Railway Standard Gauge	Multiple Track			
Main Electric Power Line	Single Track			

Scale 1:250,000 or 1 inch = 4 miles (approximately)

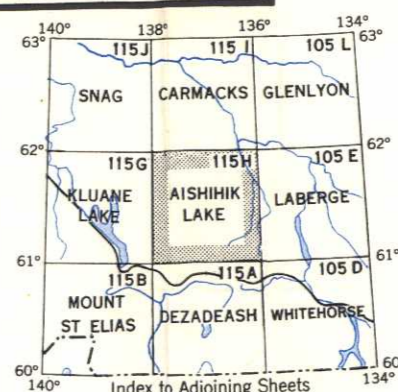


Price 25 Cents

Copies may be obtained from the Map Distribution Office, Department of Mines and Technical Surveys, Ottawa.

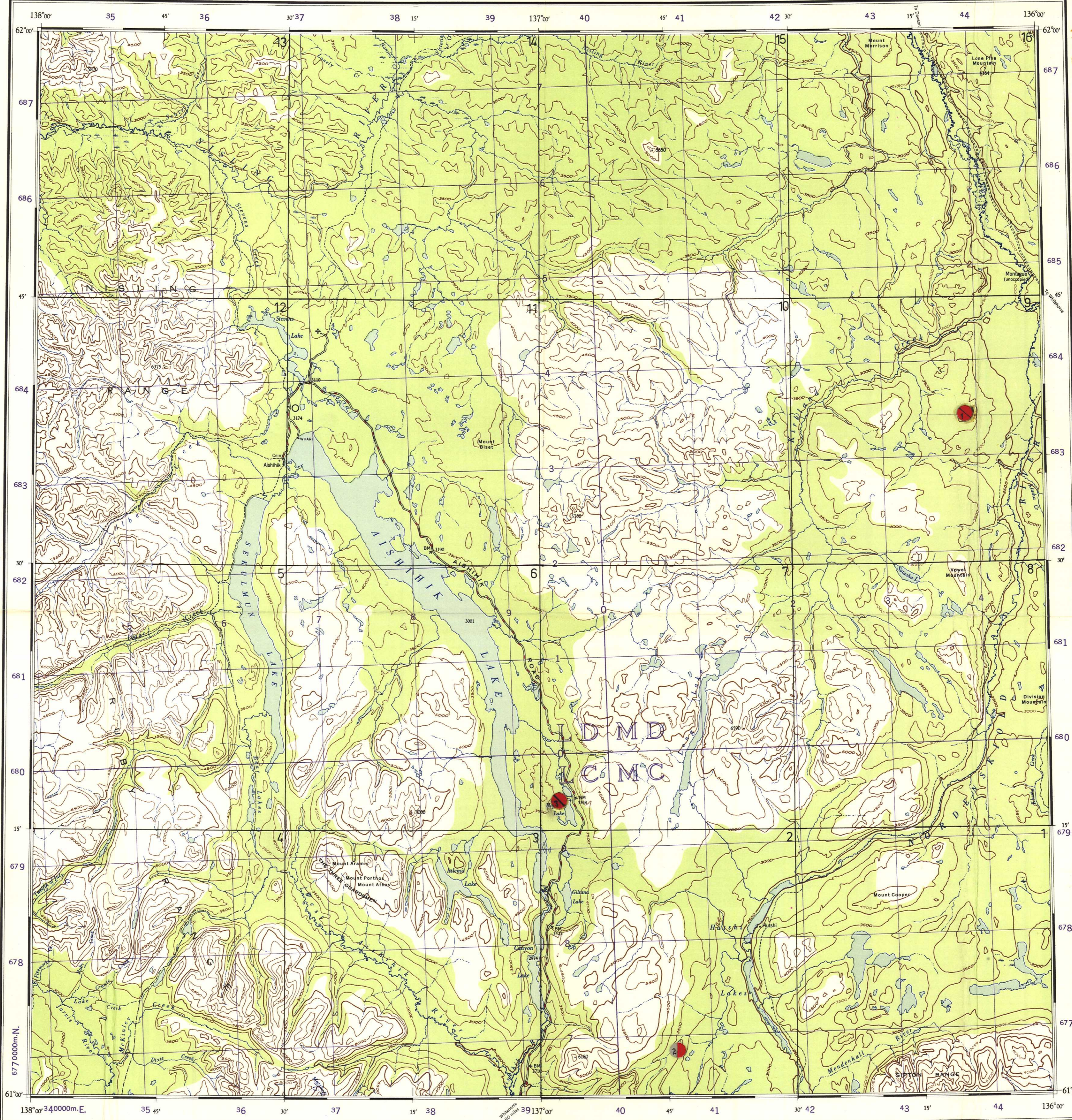
REFERENCE

Building	Fire Lookout Tower	Contours, Elevation
School	Wireless Station	Contours, Approximate
Post Office	Mine	Contours, Depression
Church	CIM	Esker
Stream, Indefinite or Unsurveyed	Wooded Area	
Stream, Intermittent	Navigable Canal	
Stream, in City River Bed	Roads and Falls	
Braced Stream	Ferry	
Marsh or Swamp	Dam	
Marsh or Swamp, in water	Lighthouse	
Glacier or Snowfield	Aerophone (Elevation in feet)	2160
Sand, Gravel or Mud	Gasoline Anchorage	



AISHIHIK LAKE
YUKON TERRITORY

SHEET 115 H
FIRST EDITION



MINERAL SHOWINGS LOCATION MAP

LEGEND:

LOPE DEPOSITS

- MINERAL PRODUCER (PAST, PRESENT OR FUTURE)
- PROSPECT
- MINERAL OCCURRENCE (SMALL OR NO INFORMATION AVAILABLE)

COLOR CODE:

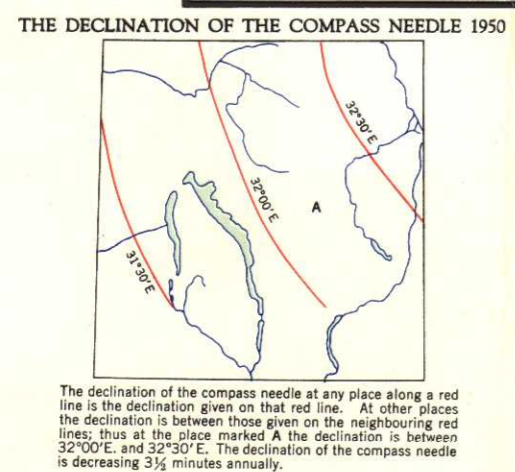
- GOLD
- SILVER
- COPPER
- LEAD
- ZINC
- TUNGSTEN
- MOLYBDENUM
- IRON
- BARITE
- NICKEL
- ASBESTOS

PLACER DEPOSITS

- GOLD
- TIN

TEN THOUSAND METRE
UNIVERSAL TRANSVERSE MERCATOR GRID
ZONE 8

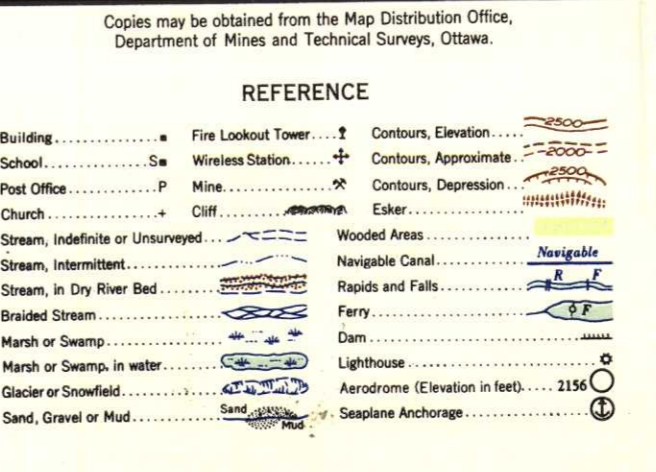
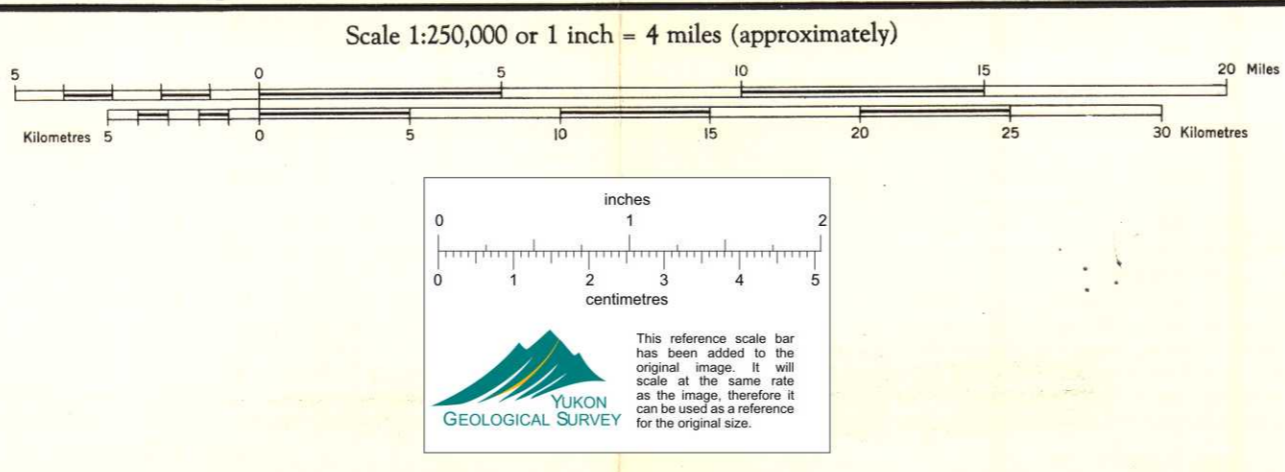
GRID ZONE DESIGNATION 180,000 W SQUARE IDENTIFICATION	TO GIVE A STANDARD REFERENCE ON THIS SHEET TO NEARLY 1,000 METERS
LD MD 680 LC MC 40	SAMPLE POINT BENCHMARK 1 Read where horizontal 100,000 meter square in which the point lies. 2 Locate first 100,000 m. square in list of grid and use LARGE figure labeling the grid on the top or bottom margin, or on the line itself. 3 Locate first 10,000 m. grid line to point. 4 Locate first HORIZONTAL and first VERTICAL grid line and read LARGE figure labeling the line either in the left or right margin, or on the line itself. Estimate meters from grid line to point.
	SAMPLE REFERENCE If reporting beyond 10' in any direction use Grid Zone Designation, or 8V1 LD 82 22
	NOTE: THE SMALLER figures of any grid number: these are for reading the full coordinates, the ONLY the LARGER figures of the grid number: example 34 0000



Compiled by the Topographical Survey 1950, from air photographs taken in 1947 and 1948 by the R. C. A. F. Lithographed and printed by the Army Survey Establishment R.C.E., Department of National Defence, 1952.

REFERENCE

Road, Hard Surface, All Weather	More Than 2 Lanes	2 Lanes	Route No.	Less Than 2 Lanes
Road, Loose Surface, All Weather	2 Lanes or More	Less Than 2 Lanes	DRY WASHING	
Road, Special, etc.	Slow Road, Path, Track	Cart Road	Portage or Trail	
Boundary, International	Boundary Mon.	Survey Mon.		
Boundary, Provincial	Boundary Mon.	Survey Mon.		
Boundary, County or District	Boundary Mon.	Survey Mon.		
Boundary, Township, Seignior or Parish	Boundary Mon.	Survey Mon.		
Boundary, Indian Reserve, Park	Boundary Mon.	Survey Mon.		
Surveyed Line	Spot Elevation (in feet)	4590		
Railway, Standard Gauge	Telephone, Trunk Route			
Main Electric Power Line	Abandoned	Stage Trace		
	Station	Sho		



AISHIHIK LAKE
YUKON TERRITORY