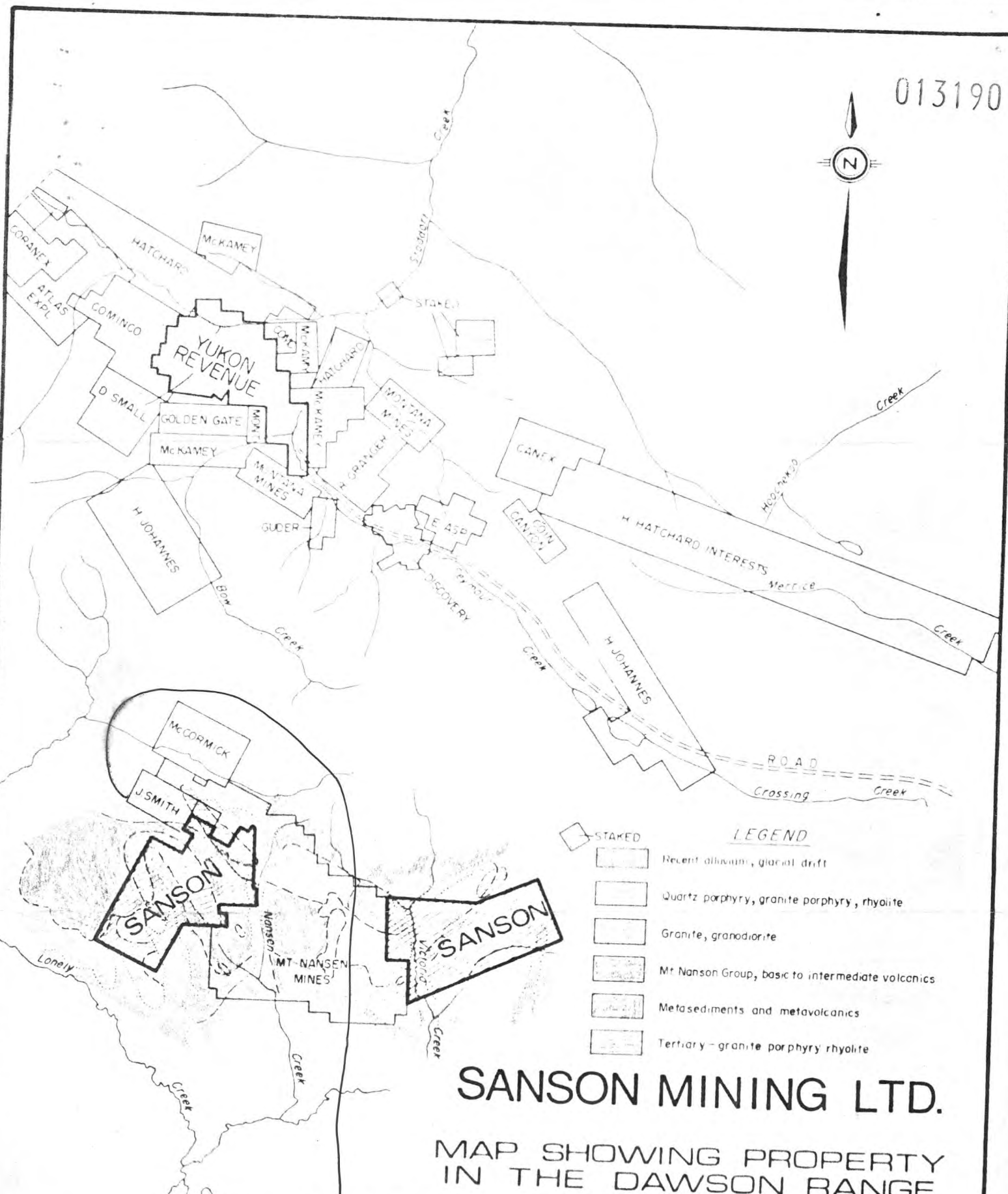


013190

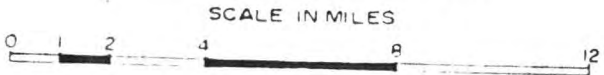


- LEGEND**
- STAKED
 - Recent alluvium, glacial drift
 - Quartz porphyry, granite porphyry, rhyolite
 - Granite, granodiorite
 - Mt Nansen Group, basic to intermediate volcanics
 - Metasediments and metavolcanics
 - Tertiary - granite porphyry rhyolite

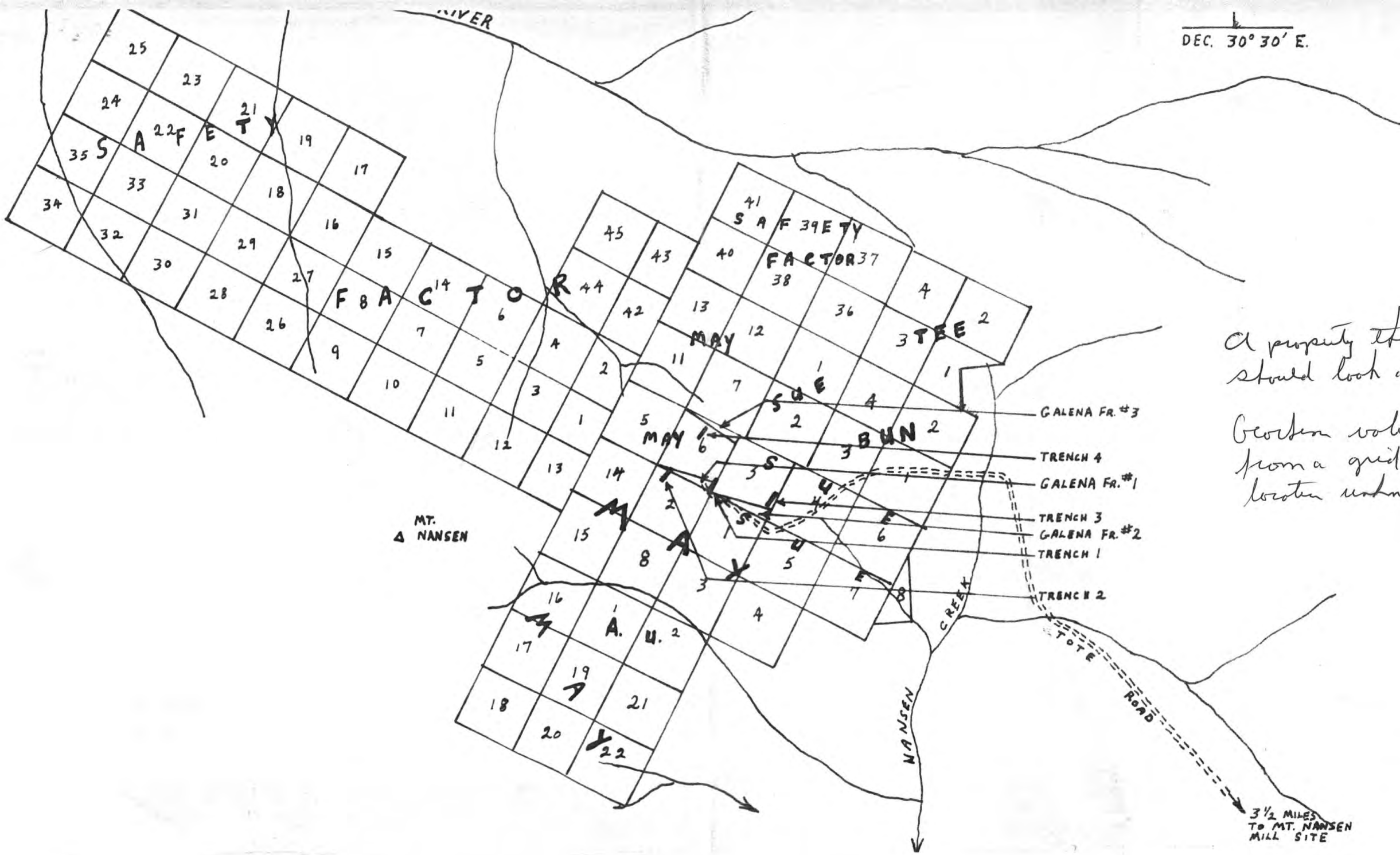
SANSON MINING LTD.

MAP SHOWING PROPERTY
IN THE DAWSON RANGE
YUKON TERRITORY

SAFETY
FACTOR
CLAIMS



DEC. 30° 30' E.



A property that you should look at -

Geodesic values from a grid but location unknown.