

Canada  
Department of Mines

HON. T. A. CRERAR, MINISTER; CHARLES CAMSELL, DEPUTY MINISTER.

BUREAU OF ECONOMIC GEOLOGY  
GEOLOGICAL SURVEY

Issued 1936  
REPRINTED, 1956

LEGEND

- MODERN**
- Recent alluvium, glacial drift, volcanic ash
- MODERN AND TERTIARY**
- 15 SELKIRK SERIES: Basalt and andesite flows
  - 14 SELKIRK SERIES: Basalt and andesite flows, breccias and tuffs; 14a, gravel and sand underlying the volcanic rocks
- TERTIARY**
- 13 Quartz porphyry, granite porphyry, rhyolite
  - 12 CARMACKS VOLCANICS: Basalt, andesite, dacite and trachyte flows, breccias and tuffs
  - 11 Conglomerate, tuff, tuffaceous sandstone, shale
- JURASSIC OR LATER**
- 10 Granite, granodiorite, and allied rock types
  - 9 Syenite, monzonite, and allied rock types
  - 8 Diorite, gabbro, and allied rock types
- MESOZOIC**
- 7 MOUNT NANSEN GROUP: Basalt, andesite and dacite flows, breccias and tuffs
  - 6 TANTALUS FORMATION: Conglomerate, sandstone, shale, coal seams
- JURASSIC**
- 5 LABERGE SERIES: Conglomerate, sandstone, arkose, greywacke, shale, tuff, coal seams
- TRIASSIC**
- 4 LEWES RIVER SERIES: Limestone, some tuffaceous sandstone
- PRECAMBRIAN AND LATER**
- 3 Granite-gneiss, diorite-gneiss
  - 2 YUKON GROUP: Limestone
  - 1 Mica-quartz schist; some chlorite schist, graphite schist, quartzite, serpentine, gneiss, limestone
- Areas in which dykes and irregular bodies of Tertiary quartz porphyry, granite porphyry and rhyolite are numerous
- Limit of last glaciation

Geological boundary (defined, approximate, assumed)  
Glacial striae

Surveys and topography by the Topographical Division, Geological Survey, Department of Mines.  
Geology by H. S. Bostock, 1932, 1933, and 1934.

INDEX TO MINERAL PROPERTIES

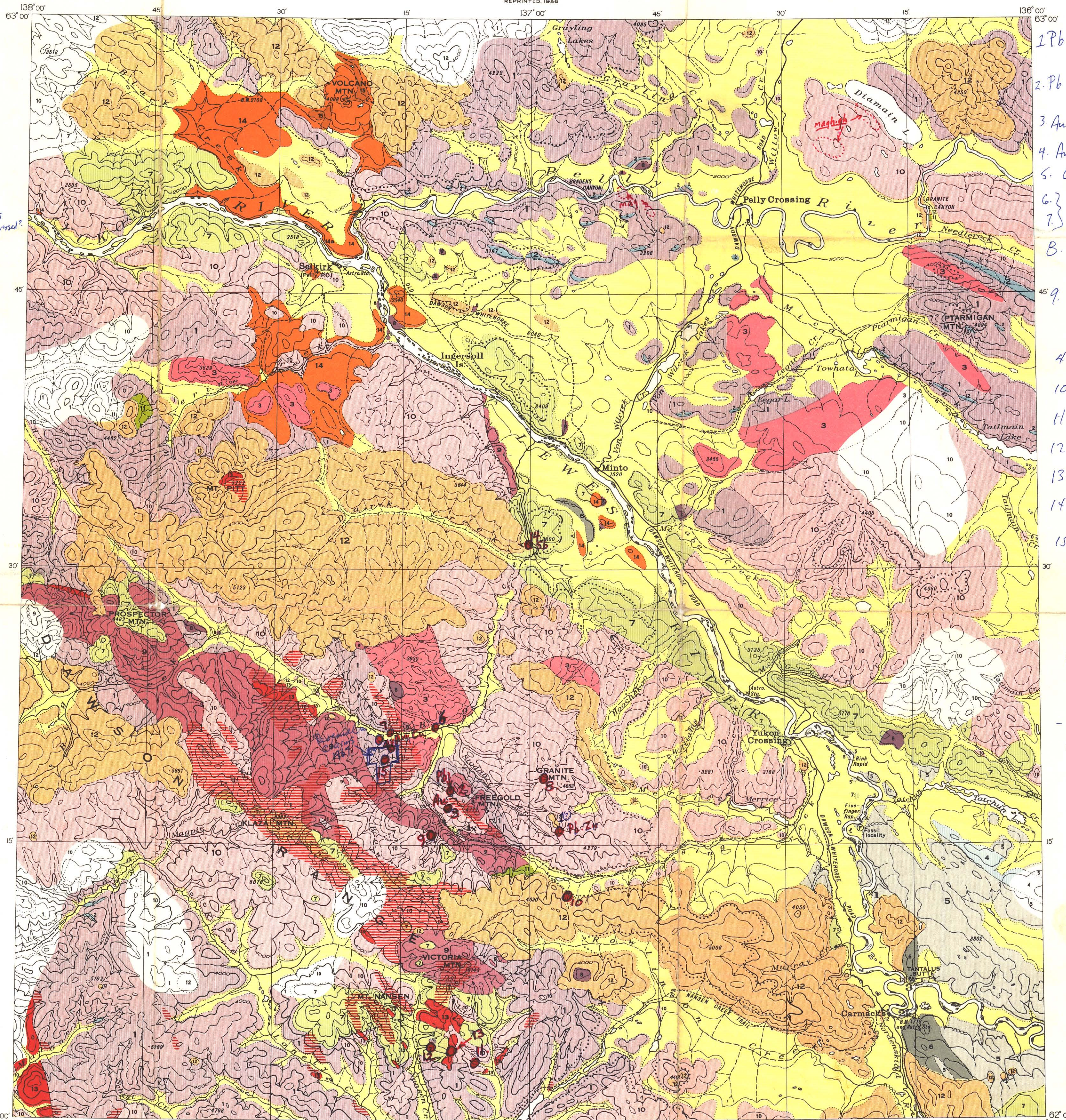
- 1. Five Finger Coal Mine
- 2. Tantalus Coal Mine
- 3. Tantalus Butte Coal Mine
- 4. Goose Mineral Claim

PROSPECTING POSSIBILITIES

The district, in all but the southeastern part, contains intrusive bodies with which mineral deposits are likely to be associated and for this reason most of it offers some promise for prospecting. The most promising parts are the broad slopes of Dawson Range and the contact between the granites and the Mount Nansen group stretching northwest from Yukon Crossing. Little is to be expected of the areas of Carmacks and Selkirk volcanics. These recommendations refer to both lode and placer possibilities, but for placer prospecting the unglaciated country is the more favourable.

TRAVEL NOTE

In descending Lewes river in a small boat it is advisable to keep to the channel along the right bank or east side in both Five-finger and Rink rapids.



1 Pb. Zn - Tritic hill  
Cawest 1960.

2. Pb Galena showing  
Goder. M.

3 Au Lode gold in 18' qtz

4. Au Cu lode show beneath.

5. Obsidian

6. } Leo Proctor 2 del  
7. } drilled 196 14' & 26'

8. Claims - sulphides  
Cawest 1959.

9. Au - Caribou Cu  
Goder had small mill  
then.

4. Ormsby Mine?

10. agate

11. Brown-McDade

12. Mt. Nansen

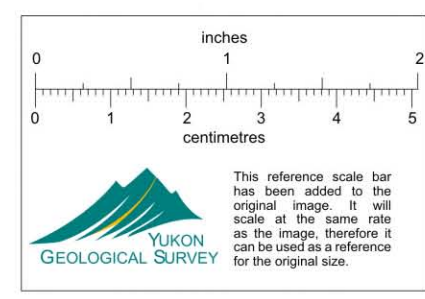
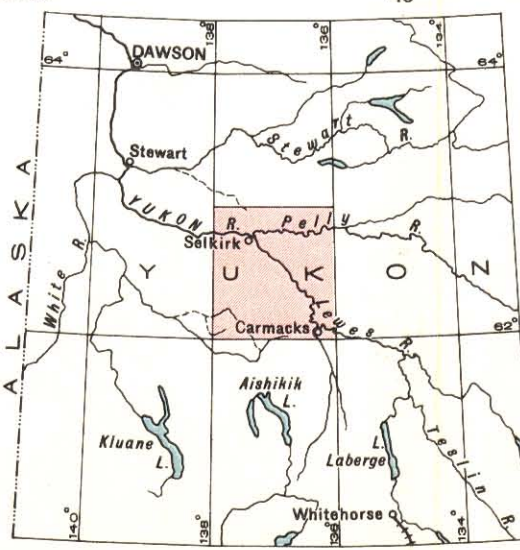
13. Heurte

14. Stibnic spec.  
Fred Strick

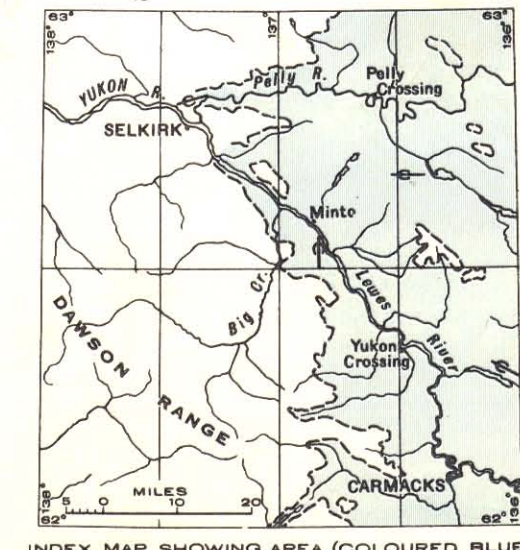
15. Small showing  
sphal, ep., bornite  
July 6/66  
Silver St. holding  
See Cambell's rept.

Bill Dunn has  
Brown-McDade  
files

- Dave Miller -  
Shas. or alteration  
Johnny Lake?  
1946  
M.Sc. thesis on  
Geology.



MAP 340A  
**CARMACKS SHEET**  
YUKON TERRITORY  
Scale, 25340 or 1 inch to 4 Miles  
Miles  
Kilometres  
Contour interval 500 feet  
Approximate magnetic declination 34'16" East  
Printed by the Surveys and Mapping Branch



013201

115-1  
Geology Field Sheets