

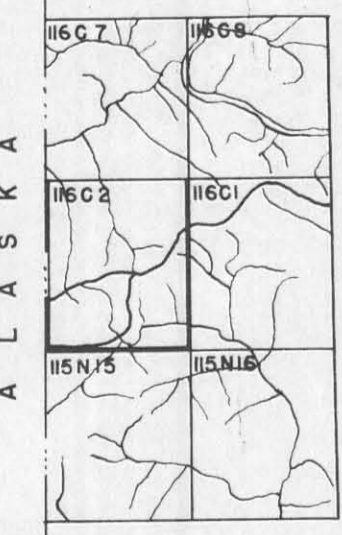
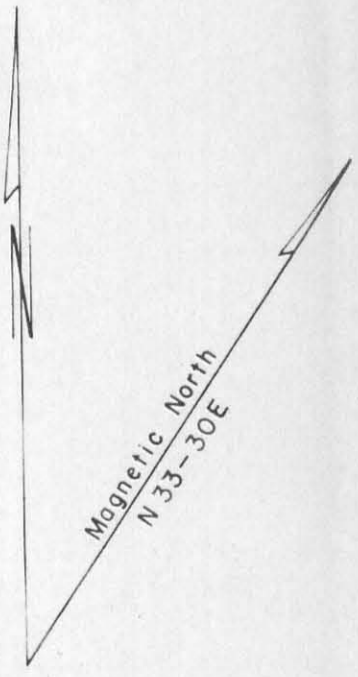
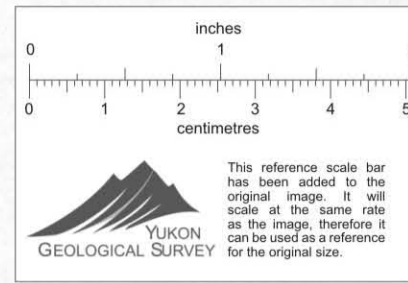
SHEET 116 C-2

LA 116 C-2 TO 64°15'
LONGITUDE 140°30' TO 141°00'

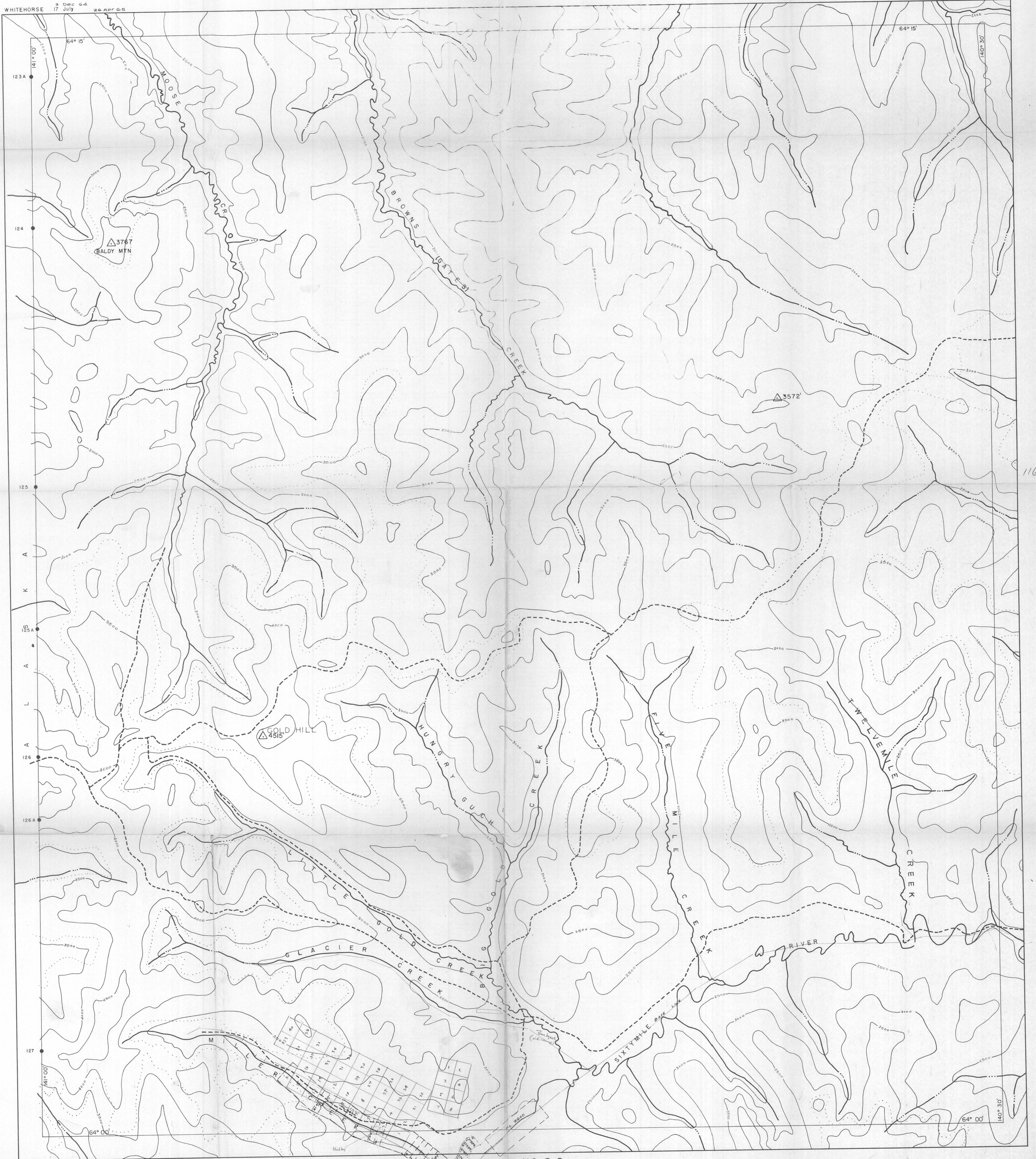
CANADA
DEPARTMENT OF NORTHERN AFFAIRS AND NATIONAL RESOURCES
NORTHERN ADMINISTRATION AND LANDS BRANCH
LANDS DIVISION

SCALE 1/2 MILE TO 1 INCH

ISSUED UNDER THE AUTHORITY OF THE MINISTER
OF NORTHERN AFFAIRS AND NATIONAL RESOURCES



WHITEHORSE 17 July 1964
3 Dec 64
26 Apr 65



116-c-2