

(no results for aills)
⊥

NOTE. THREE SMALL CUTS MADE
IN PYRITES CREEK, JULY 14/63-
BPB - ONE ON WEST BANK, TWO, 150 FEET
NORTH ON EAST BANK, NEAR CREEK.
SAME ROCK TYPE EXTENDS FOR 300 FEET



013257

(no results for silts)

⊥

JUNE 20

↑ N



35. ML SOUTH
(MLS-1)



A11540-160

mil on Zn-Dz for any this overlay⁺



ooo

+

+
x A21 x A22

+

x A23

x A24

x 25

ooo

ooo

B₂₆^x

x A19

x A20

+

A 11545-402

nil on Zu-Dz this overlay +



A11545 - 401

71540-171



T

(no silts)

(no results fossils)

QUARTZITES

GRANITE?

LIME

+

SHALE

SEDIMENTS

SHALE

GRANITE
GRANITE

M2

SS
ML EAST

(MLE-1)

SEDIMENTS
M1

QUARTZ

IN LIME
GNEISS + SHALE

SHALE + QUARTZITE

AMS 40-173

(no results for silt)



x A15
x A14

x A16

ooo

ooo?

ooo

ooo

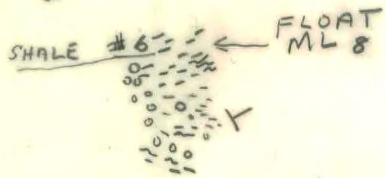
x A12

x A11

x A13

x SS ML 9 (200)

ooo



x A18

x A17

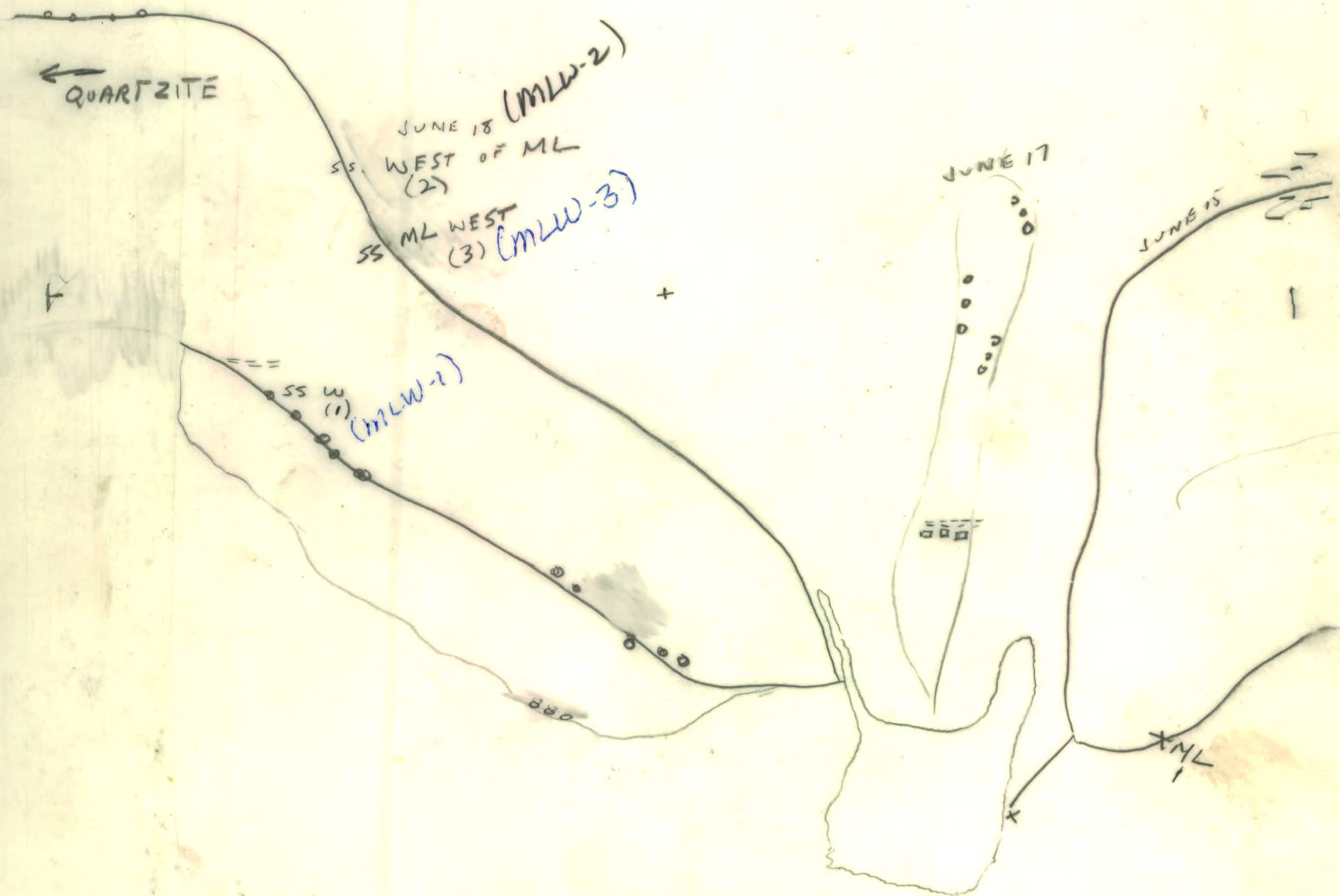
ooo

T

ooo ooo

11540474

(no results for silt)

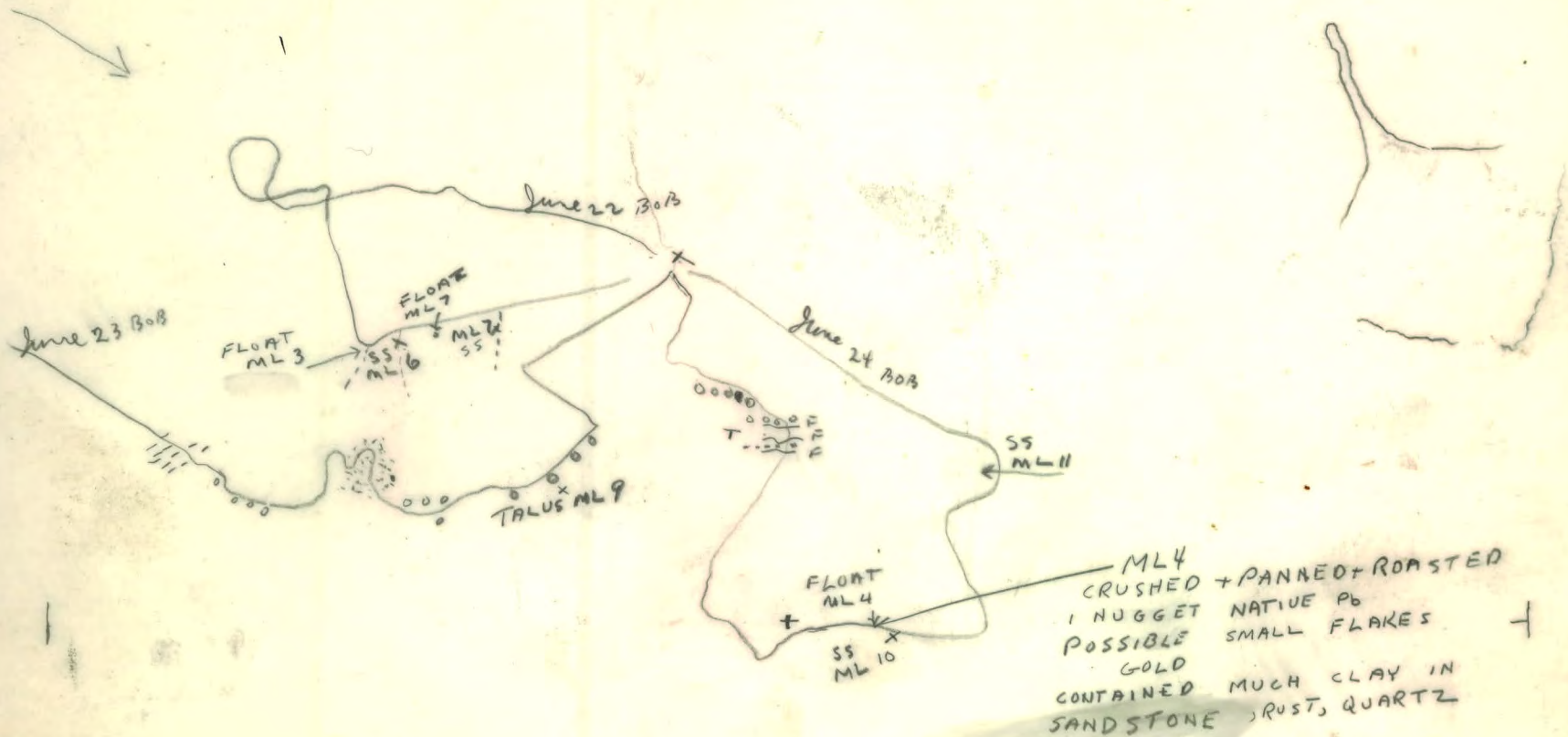




112

A11540-175
 Davis - June 18/63
 20

(M 22 took 1 1/2 ml. D2 - 2u)



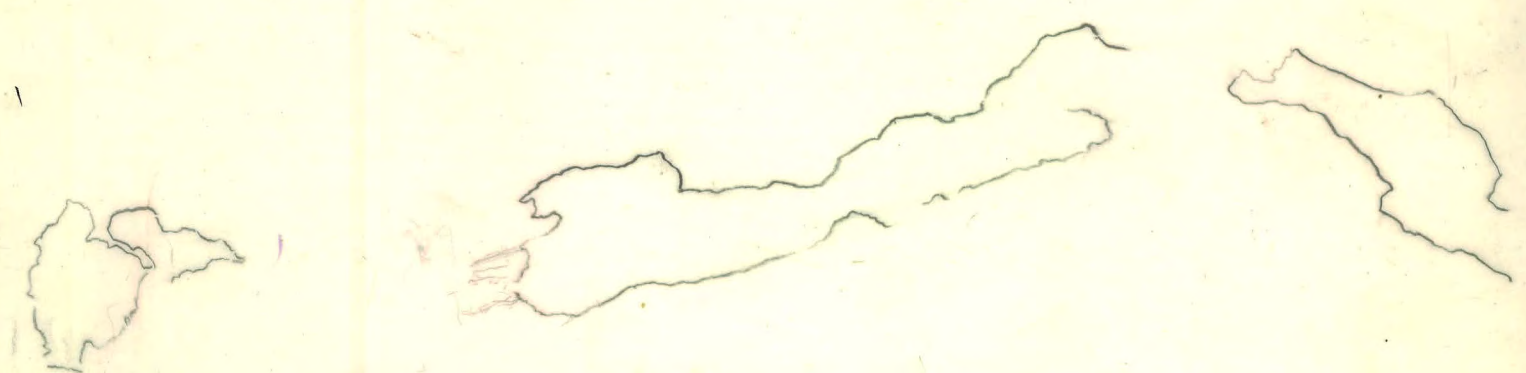
ML4
CRUSHED + PANNED + ROASTED
1 NUGGET NATIVE Pb
POSSIBLE SMALL FLAKES
GOLD
CONTAINED MUCH CLAY IN
SANDSTONE, RUST, QUARTZ

SSML 18 is 2 MILES EAST OF
MOOSE LAKE BASE CAMP









x A34

x A33

x A35

□□

x A34

+

□□

x A32
□□

A37

A39

x A38