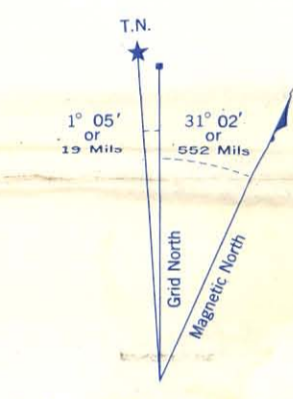
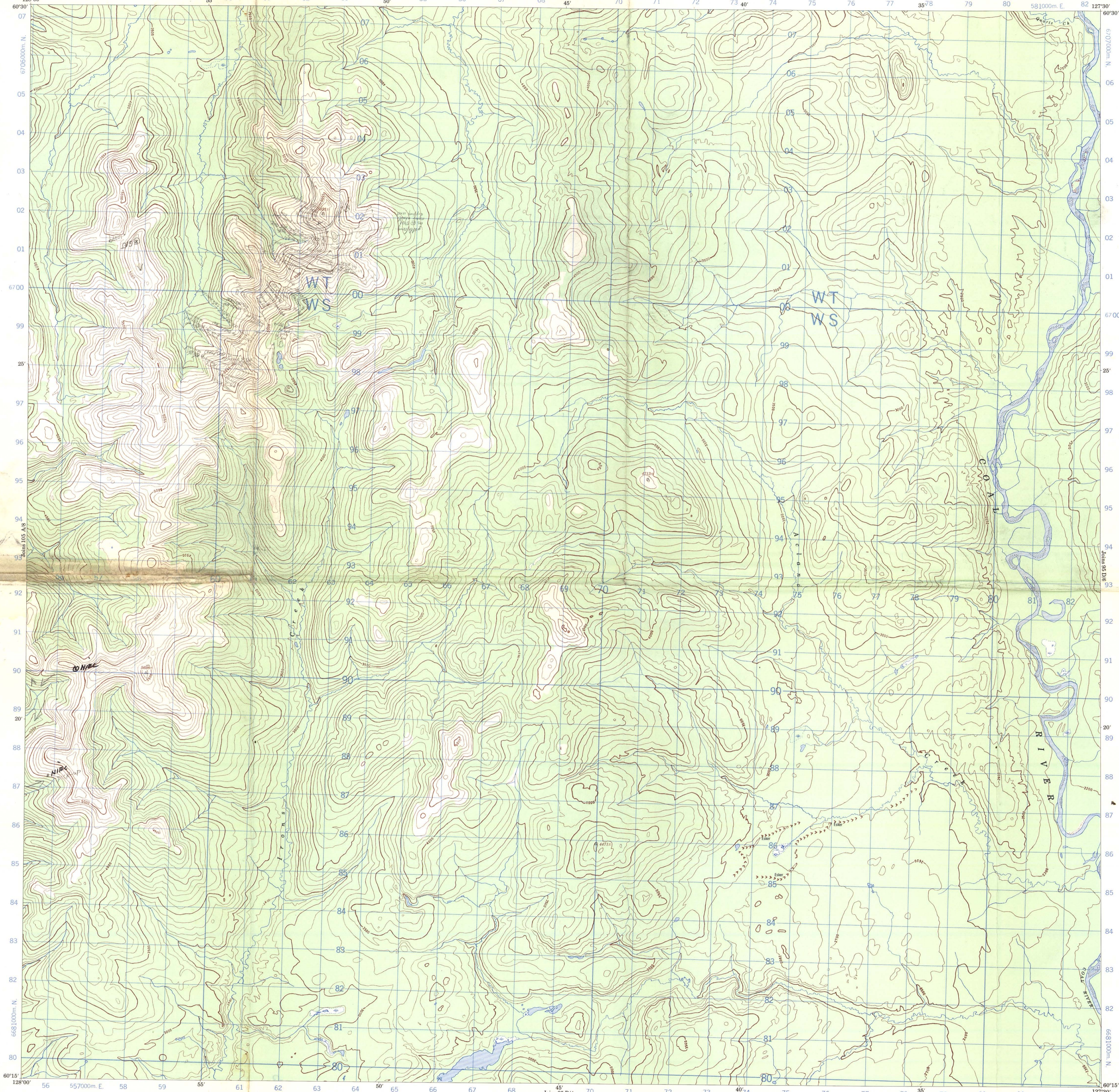
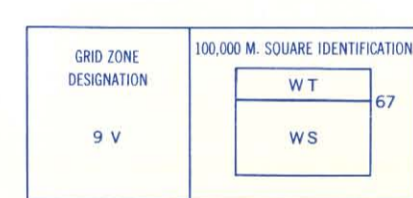


Refer to this map as: 95 D/5 EDITION 1 MCE SERIES A 722

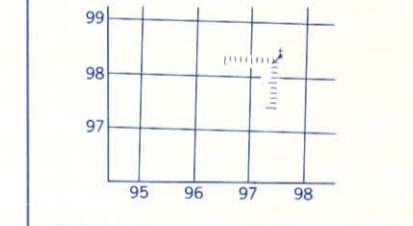


Use diagram only to obtain numerical values. APPROXIMATE MEAN DECLINATION 1966 FOR CENTRE OF MAP. Annual change decreasing 5.3'

ONE THOUSAND METRE UNIVERSAL TRANSVERSE MERCATOR GRID ZONE 9



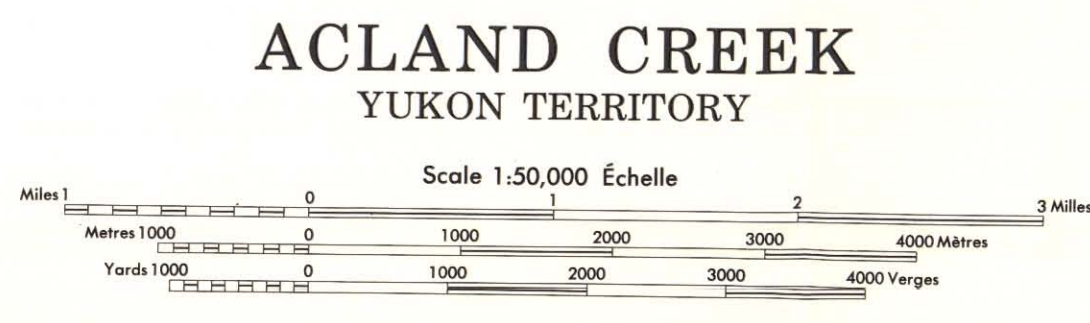
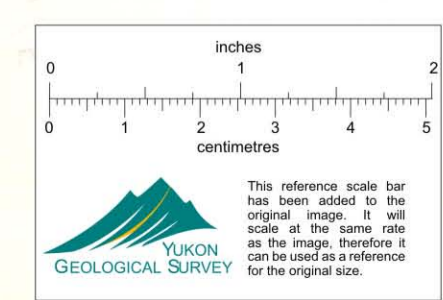
EXAMPLE OF METHOD USED TO GIVE A REFERENCE TO NEAREST 100 METRES. THE FOLLOWING GRID REFERENCE IS A SIMPLE ONE AND DOES NOT REFER TO A POINT ON THE MAP



REFERENCE POINT CHURCH (as above)

EASTING: Read number on grid line immediately to left of point	97
Estimate tenths of a square from this line eastward to point	97.5
NORTHING: Read number on grid line immediately below point	98
Estimate tenths of a square from this line northward to point	98.4
EXAMPLE MILITARY GRID REFERENCE	975084
Nearest similar grid reference 100,000 metres (about 62 miles)	

Produced 1968, by the SURVEYS AND MAPPING BRANCH, DEPARTMENT OF ENERGY, MINES AND RESOURCES, from aerial photographs taken in 1960-1961. Field surveys 1955 and 1960. Printed 1975. Copies may be obtained from the Map Distribution Office, Department of Energy, Mines and Resources, Ottawa.



ACLAND CREEK
YUKON TERRITORY

Scale 1:50,000 Échelle

This Provisional Map is equivalent to a standard map in accuracy of content. Some names on this map are not yet official. Corrections or additions are invited by the Surveys and Mapping Branch.

CONTOUR INTERVAL 100 FEET
Elevations in Feet above Mean Sea Level
North American Datum 1927
Transverse Mercator Projection

Cette carte provisoire équivaut à une carte régulière au point de vue précision de l'information. Certains noms inscrits sur cette carte ne sont pas encore officiels. La Direction des levés et de la cartographie saurait être au public de lui signaler corrections et additions.

ÉQUIDISTANCE DES COURBES 100 PIEDS
Élévations en pieds au-dessus du niveau moyen de la mer
Système de référence géodésique nord-américain 1927
Projection transverse de Mercator

Établie en 1968, par la DIRECTION DES LEVÉS ET DE LA CARTOGRAPHIE, MINISTÈRE DE L'ÉNERGIE, DES MINES ET DES RESSOURCES, d'après des photographies aériennes prises en 1960-1961. Levés sur le terrain en 1955 et 1960. Imprimé en 1975. Ces cartes sont en vente au Bureau de distribution des cartes, ministère de l'Énergie, des Mines et des Ressources, Ottawa.