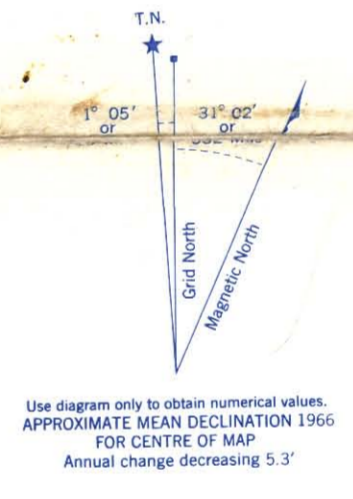
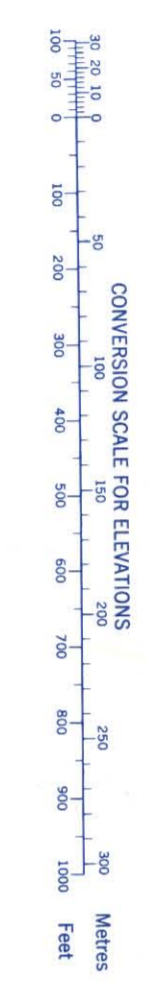
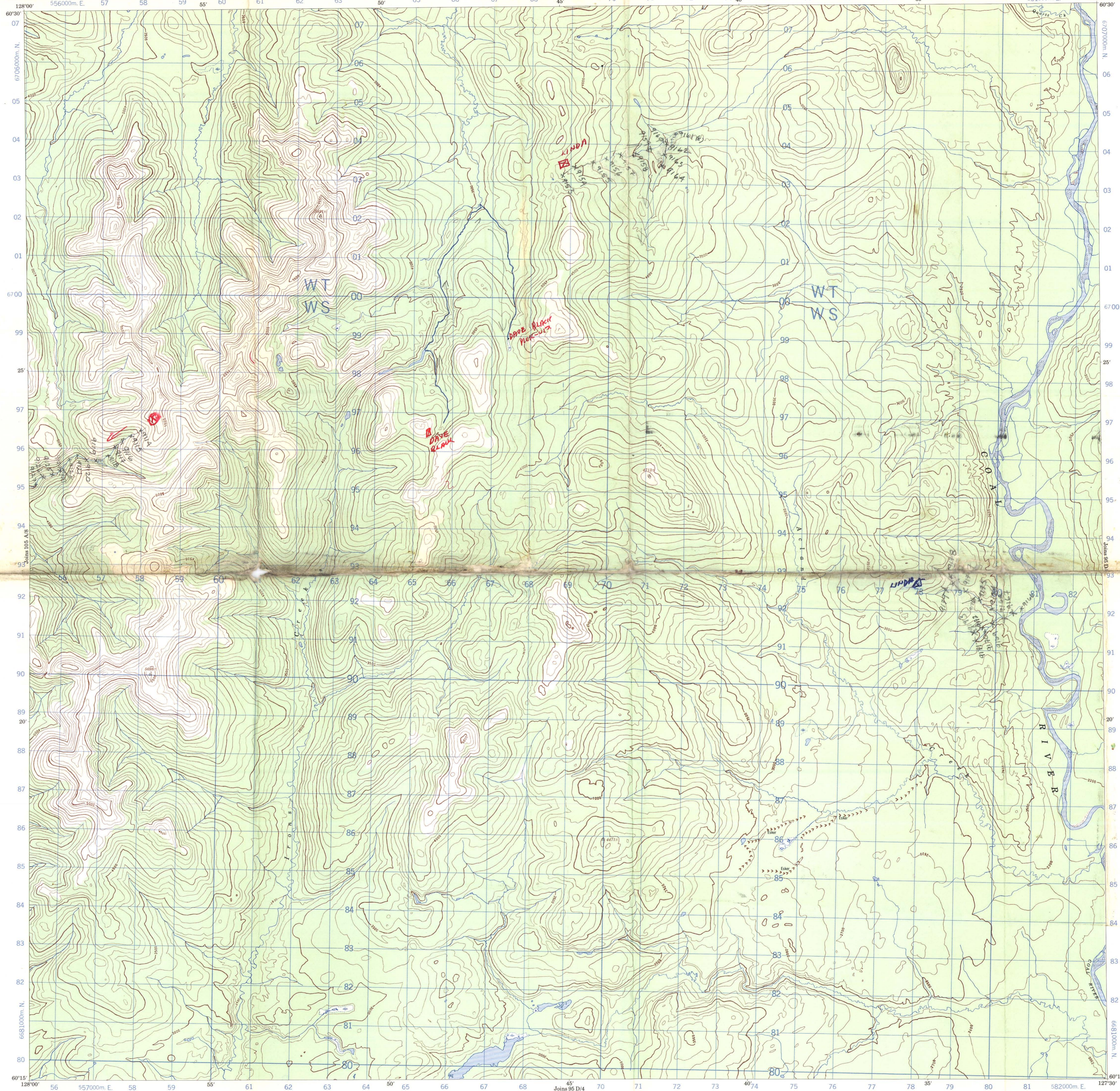
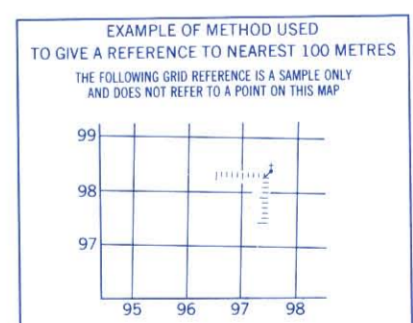


Refer to this map as: 95 D/5 EDITION 1 MCE SERIES A 722



ONE THOUSAND METRE
UNIVERSAL TRANSVERSE MERCATOR
ZONE 9

GRID ZONE DESIGNATION	100,000 M. SQUARE IDENTIFICATION
9 V	WT 67
	WS



REFERENCE POINT: CHURCH (see above)

EASTING: Read number on grid line immediately to left of point. Estimate tenths of a square from this line eastward to point. 97 5 975

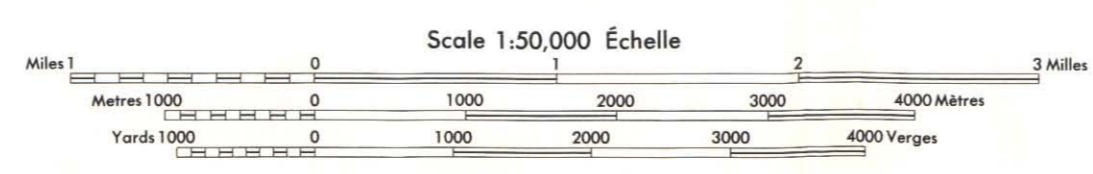
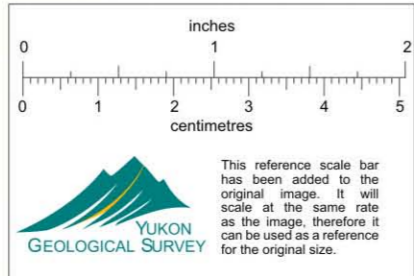
NORTHING: Read number on grid line immediately below point. Estimate tenths of a square from this line northward to point. 98 4 984

EXAMPLE MILITARY GRID REFERENCE: 97984

Nearest similar grid reference 100,000 metres (about 62 miles)

Produced, 1968, by the SURVEYS AND MAPPING BRANCH, DEPARTMENT OF ENERGY, MINES AND RESOURCES, from aerial photography taken in 1960-1961. Field surveys 1955 and 1960. Printed 1970.

Copies may be obtained from the Map Distribution Office, Department of Energy, Mines and Resources, Ottawa.



ACLAND CREEK
YUKON TERRITORY

This Provisional Map is equivalent to a standard map in accuracy of content.

Some names on this map are not yet official. Corrections or additions are invited by the Surveys and Mapping Branch.

CONTOUR INTERVAL: 100 FEET
Elevations in feet above Mean Sea Level
North American Datum 1927
Transverse Mercator Projection

Cette carte provisoire équivaut à une carte régulière au point de vue précision de l'information.

Certains noms inscrits sur cette carte ne sont pas encore officiels. La Direction des levés et de la cartographie encourage tout le public de lui signaler corrections et additions.

EQUIDISTANCE DES COURBES: 100 PIEDS
Élévation en pieds au-dessus du niveau moyen de la mer
Système de référence géodésique nord-américain 1927
Projection transverse de Mercator

Établie en 1968, par la DIRECTION DES LEVÉS ET DE LA CARTOGRAPHIE, MINISTÈRE DE L'ÉNERGIE, DES MINES ET DES RESSOURCES, à partir des photographies aériennes prises en 1960-1961. Levés sur le terrain en 1955 et 1960. Imprimée en 1970.

Ces cartes sont en vente au Bureau de distribution des cartes, ministère de l'Énergie, des Mines et des Ressources, Ottawa.