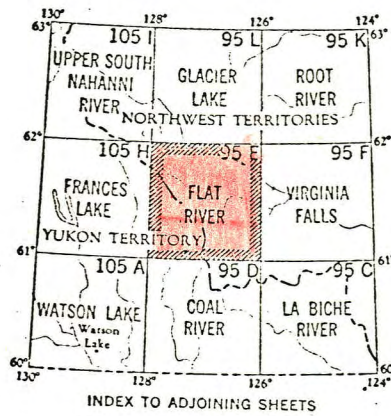


013296



FLAT RIVER
95 E
EDITION 2

LODE OCCURRENCES

1966

1. Heather Group (Bralorne Pioneer Mines Limited) (about 61°31'N,
(Lead-Zinc) NTS 95 E 12 127°36'W)

During the 1966 season Bralorne Pioneer Mines Limited carried out geological mapping and prospecting over its 8-claim Heather Group, located on Yukon-Northwest Territories boundary about 10 miles southwest of the junction of Flat River and Pass Creek and about 22 miles east of mile 67 on the Canada Tungsten Mine road. In this area, minor disseminated sulphides, chiefly galena, sphalerite and chalcopyrite, are reported to occur in pyroxenitic skarn zones developed near the northeast-trending contact between dioritic rocks of a Cretaceous (?) intrusion (unit 35, Gabrielse et al, 1965) and silicified limestone of probable Cambrian age (unit 8, op. cit.). The 1966 work did not outline mineralization of economic interest. The property was not visited.

2. Hyland River

1960

NTS 95 E 12

In 1960, Mackenzie Syndicate prospected the Logan Mountains in Yukon Territory and Mackenzie District, between Hyland River on the west and Coal and Flat Rivers on the east. They went as far north as the Canada Tungsten Mining Corporation property and as far south as Green River—a southwesterly flowing tributary of Hyland River. This area is mainly in Flat River (95E) map-area, and partly in Frances Lake (105H), Watson Lake (105A), and Coal River (95D) map-areas. The helicopter-supported crew of ten men made up one geophysical, two prospecting, and two geological parties. The base camp was at a small lake—locally called 'Caesar Lake'—at lat. 61° 26'N, long. 127°55'W.

The syndicate examined three showings. The most promising, the 'B.G.' group, consists of about 45 lead-zinc-silver-bearing claims at lat. 61°32'N, long. 127°30'W, about 5 miles northwest of a small lake—locally called 'Lucky Lake'—in the District of Mackenzie. The showing was discovered in 1954 by B. Groat of Lower Post, British Columbia while working for Northwestern Explorations Limited. In 1960 the syndicate trenched and sampled the showing and made a geological and a geophysical survey of the property. The deposits will probably be diamond-drilled in 1961. The showing is in a skarn zone about 40 feet wide that has been traced for 10 miles in a northeasterly direction. The main part of the zone is about 3 miles long and contains scattered deposits of sulphides averaging between 15 and 20 per cent combined lead and zinc.

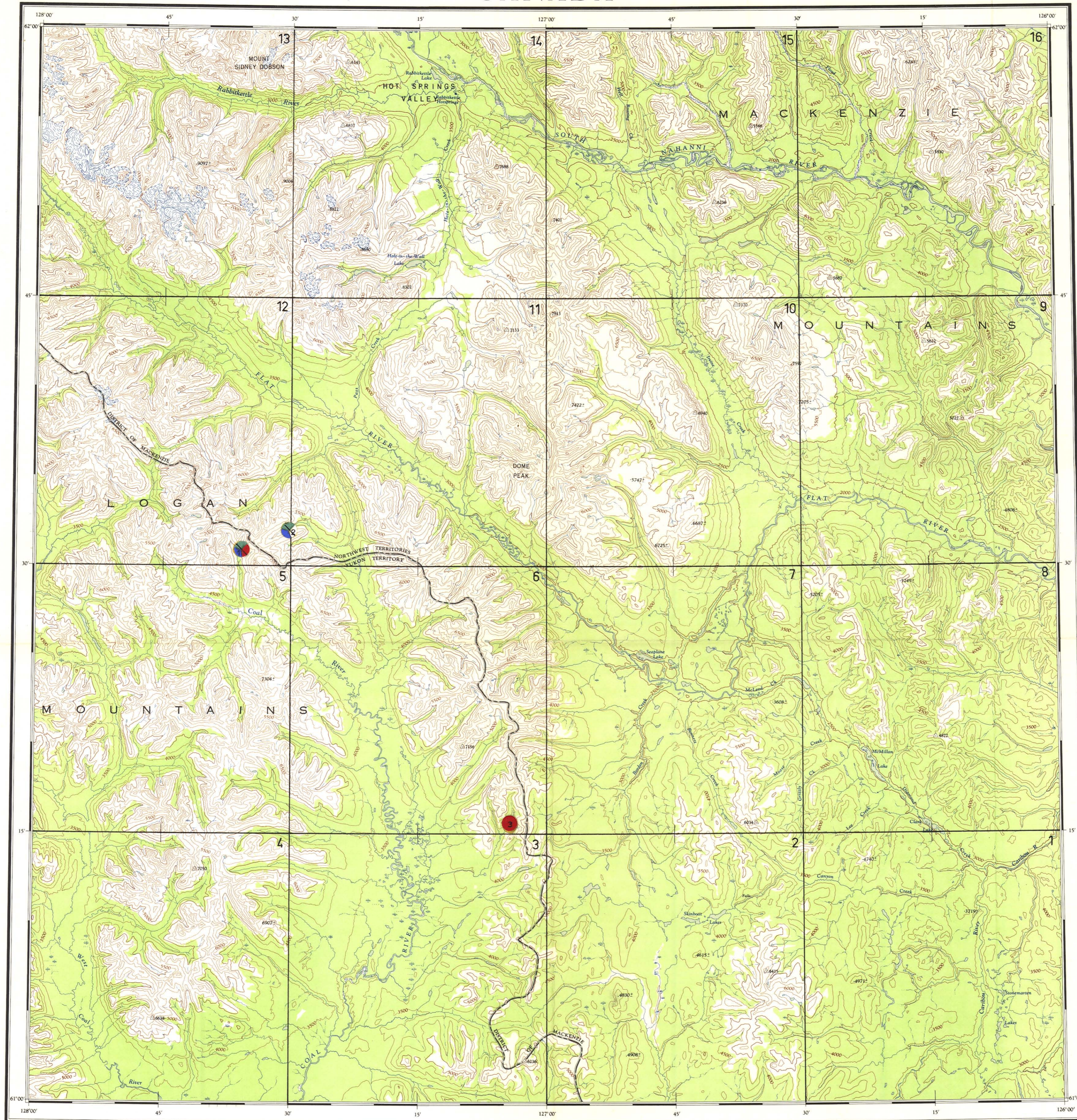
NTS 95 E 6

#3

The third showing is a copper deposit on the Yukon - District of Mackenzie boundary at lat. 61°16'N, long. 127°05'W,

Phelps Dodge Corporation spent a month in 1960 prospecting the Logan Mountains west of Hyland River as far north as Summit Lake in Nahanni (105I) map-area, and as far south as lat. 60°45'W in Watson Lake (105A) map-area. The base camp for the helicopter-supported seven-man party was at Anderson Lake in Frances Lake (105H) map-area. The party spent the early part of the summer near Burns Lake, British Columbia. The results of the work are not known to the writer.

PLACER OCCURRENCES



MINERAL SHOWINGS LOCATION MAP

LEGEND:

LOPE DEPOSITS

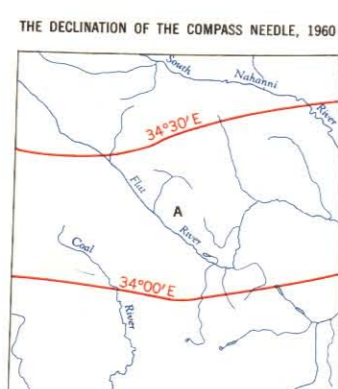
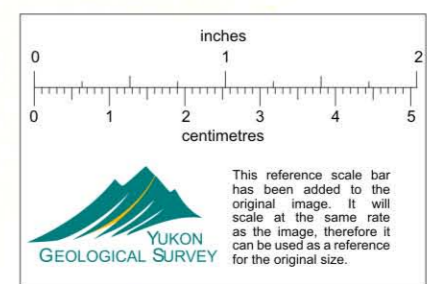
- MINERAL PRODUCER (PAST, PRESENT OR FUTURE)
- PROSPECT
- MINERAL OCCURRENCE (SMALL OR NO INFORMATION AVAILABLE)

COLOR CODE:

- GOLD
- SILVER
- COPPER
- LEAD
- ZINC
- TUNGSTEN
- MOLYBDENUM
- IRON
- BARITE
- NICKEL
- ASBESTOS

PLACER DEPOSITS

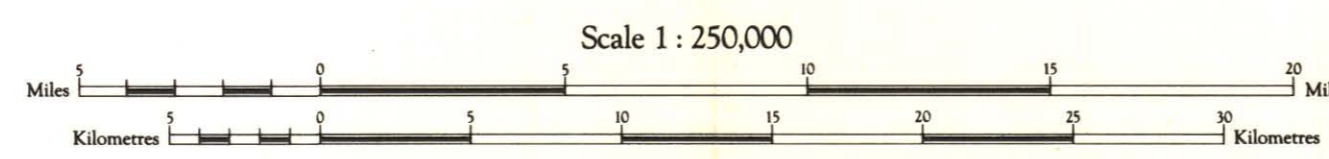
- GOLD
- TIN



The declination of the compass needle at any place along a red line is the declination given on that red line. At other places the declination is between those given on the neighbouring red lines; thus at the place marked A, the declination is between 34°00' E. and 34°30' E. The declination of the compass needle is decreasing 4 minutes annually.

Produced by the ARMY SURVEY ESTABLISHMENT, R.C.E. 1958-60
Aerial photography 1949.

- Roads:**
- loose surface, all weather
 - dry weather
 - cut track or winter road
 - trail or portage
- Boundaries:**
- provincial, with monument
 - district
 - township, etc.
 - park, reserve, etc.
 - Power line; Telephone line
 - Horizontal control point, with elevation
 - Astronomical monument
 - Bench mark, with elevation
 - Spot elevation; precise, approximate
 - Sand or gravel pit

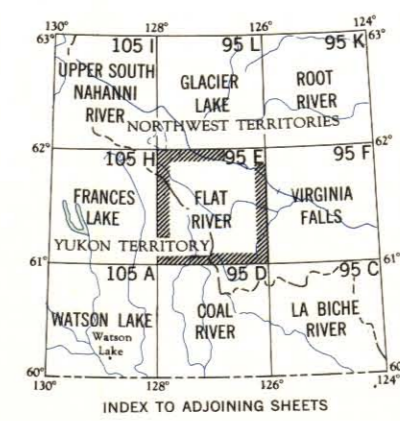


FLAT RIVER

YUKON TERRITORY / NORTHWEST TERRITORIES

Contour Interval 500 Feet
Elevations in Feet above Mean Sea Level
Transverse Mercator Projection
North American Datum 1927

- House; Building
- Post Office; School; Church
- Radio Station
- R.C.M.P. Detachment; Tower
- Cut or low relief
- Esker; Pingo
- Swamp or marsh
- Intermittent lake, stream
- Indefinite lake, stream
- Rapids, large, small; Bridge
- Infused or Glacier
- Dry river bed
- Contours: elevation
- depression
- Wooded area



FLAT RIVER
95 E
EDITION 2

Copies may be obtained from
The Map Distribution Office,
Dept. of Mines and Technical Surveys,
Ottawa, at 25 cents each.