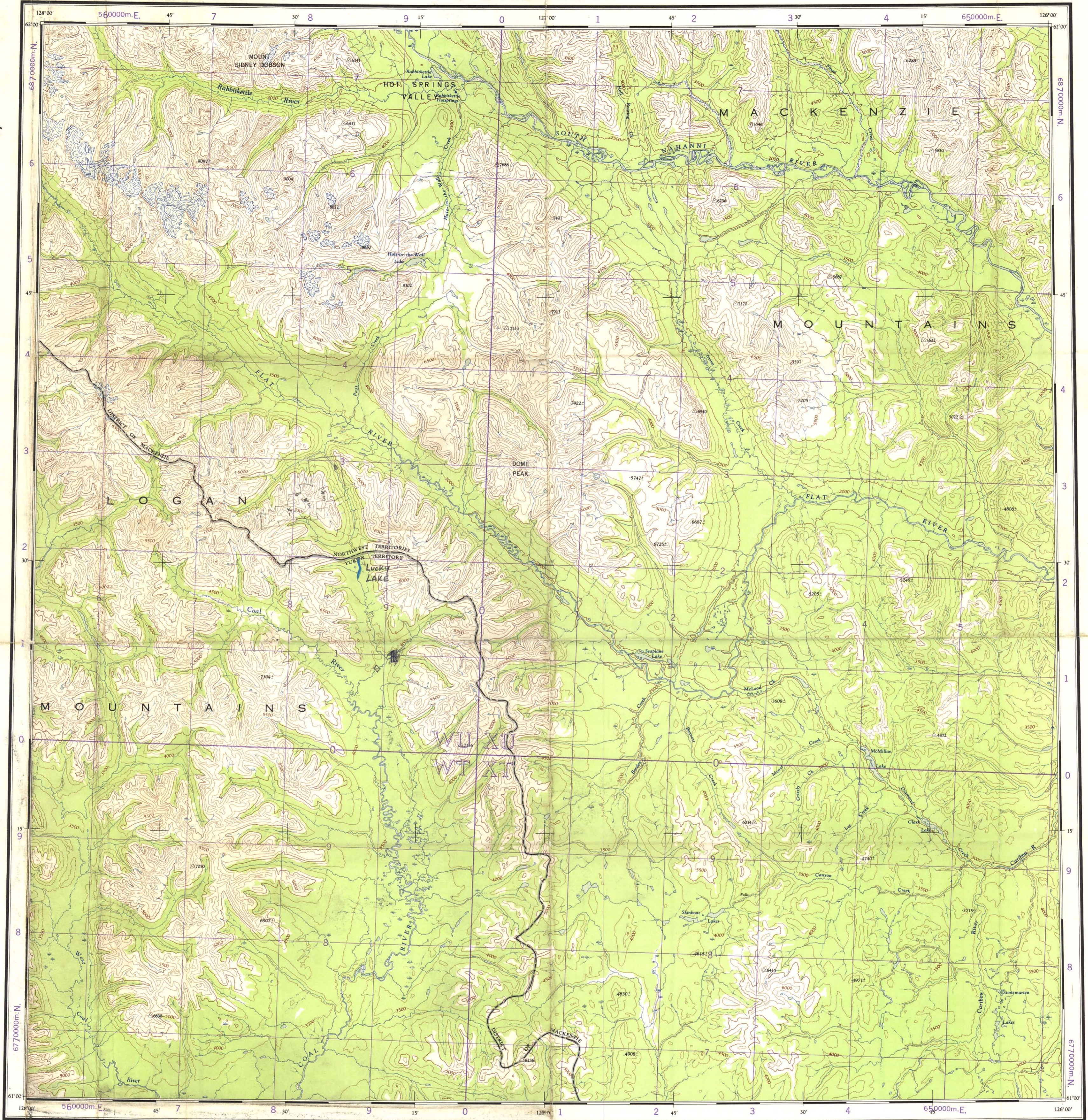


PAT
500 0 200



Refer to this map as: 95 E EDITION 2 ASE SERIES A 502

100,000 M. SQUARE IDENTIFICATION

| | | | |
|-----------------------|-----|-----|------|
| GRID ZONE DESIGNATION | W U | X U | 68 0 |
| 9 5 | W T | X T | 6 0 |

TO GIVE A REFERENCE TO NEAREST 1000 METRES

EXAMPLE: HOT SPRINGS

SQUARE: Read letters of 100,000 m. square W U

EASTING: Read number on grid line immediately to left of point. Estimate tenths of a square from this line eastward to point.

NORTHING: Read number on grid line immediately below point. Estimate tenths of a square from this line northward to point.

MILITARY GRID REFERENCE (to nearest 1000 metres): W U 9 5 6 9

If reporting beyond 10° in any direction, prefix Grid Zone Designation as: 9 V W U 9 5 6 9

TEN THOUSAND METRE UNIVERSAL TRANSVERSE MERCATOR GRID ZONE 9

THE DECLINATION OF THE COMPASS NEEDLE, 1960

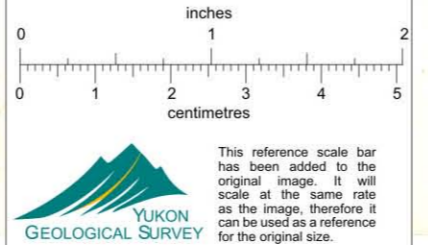
The declination of the compass needle at any place along a red line is the declination given on that red line. At other places the declination is between those given on the neighbouring red lines; that at the place marked A, the declination is between 34'00" E. and 34'30" E., the declination of the compass needle is decreasing 4 minutes annually.

Produced by the ARMY SURVEY ESTABLISHMENT, R.C.E. 1958-60
Aerial photography 1949.

FLAT RIVER

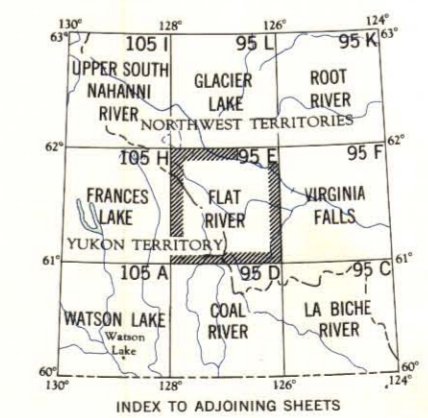
YUKON TERRITORY - NORTHWEST TERRITORIES

Scale 1 : 250,000



Contour Interval 500 Feet
Elevations in Feet above Mean Sea Level
Transverse Mercator Projection
North American Datum 1927

- House: Building
- Post Office: School, Church
- Radio Station
- R.C.M.P. Detachment: Tower
- Cliff or low relief
- Esker: Pile
- Swamp or marsh
- Intermittent lake, stream
- Individual lake, stream
- Rapids, large, small: Bridge
- Icefield or Glacier
- Dry river bed
- Contours
- Elevation
- Depression
- Wooded area



FLAT RIVER
95 E
EDITION 2

013298