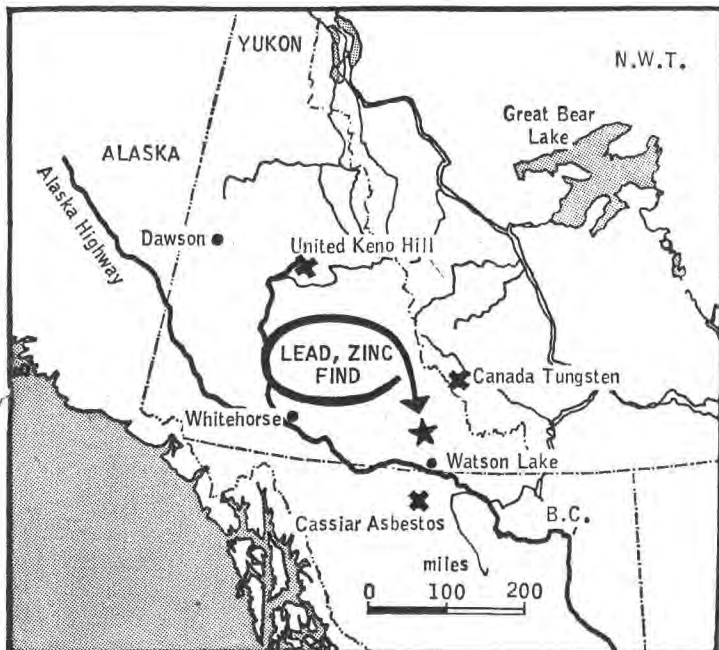


013325

FP Nov 10/62



LEAD, ZINC FIND in the Yukon raises possibility of further operations in this remote but expanding mining area. Backers of the project are four leading exploration-mining firms. Participation is: Newconex Canadian Exploration, one third; a Placer Development subsidiary, one third; Kerr-Addison Gold Mines and Anglo-Huronian Ltd. (not Prospectors Airways as previously reported in FP) equally share one third.

NOV. 1/62 Province

Lead-zinc prospect in Yukon

Frances River Syndicate, backed by four of the largest Canadian mining companies, reports a promising new lead-zinc-silver showing 35 miles north of Watson Lake, Yukon.

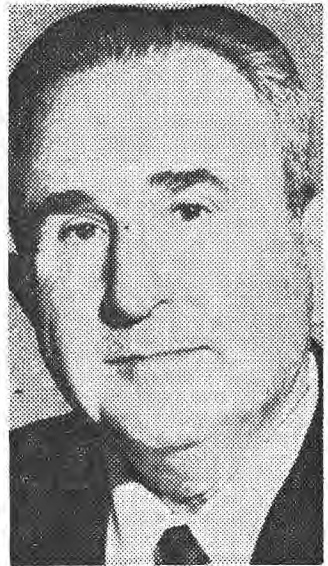
Manager and organizer of the syndicate is Dr. A. E. Aho, Vancouver, consulting geological engineer. Backers are Newconex Canadian Exploration, Canex Aerial Exploration, each with one-third participation, and Kerr-Addison Gold Mines and Anglo-Huronian Ltd., each with one-sixth.

The strike was made in June by Jacob Hundere and Peter Ritco, prospecting a completely virgin area northwest of Tom Lake, under direction of Dr. Aho and R. E. G. Davis, geologist.

Nine bulldozer trenches about 50 feet apart across the zone of two or three separate lenses have proved up a length of 420 feet with an aggregate average giving 1.2 ounces per ton silver, 11.3 per cent lead and 7.2 per cent zinc, across aggregate average width of about 25 feet.

To cover all the favorable ground 320 claims have been staked. Twelve miles of access road have been built to the property from the Watson Lake-Ross River road and a limited amount of bulldozer trenching was done in late September.

Next season's work will probably include mapping, geochemistry, geophysics, trending and diamond drilling.



A. DICKENSTEIN
... guest speaker

Development firm sets annual meet

Abraham Dickenstein of New York, president of the Ampal-American Israel Corp., a corporation organized to help the development of Israel through private investment, will address the Vancouver annual meeting, Monday at 8 p.m. in the Bayshore Inn.

Ampal (named from America-Palestine) was organized 21 years ago and today has assets of \$70 million. Since its formation it has provided loans and investments to Israel industry of close to \$400 million. Mr. Dickenstein, born in Lithuania, partly educated in Russia, joined the Workers' Bank in Israel in 1924.

In 1941, when he was on an economic mission in New York, the idea of Ampal was suggested by a few American businessmen. They raised \$99,000 and desk space was rented at \$10 a month. Today Ampal owns a \$250,000 building for its New York offices. Mr. Dick-

**COLUMBIA CELLULOSE
APPOINTMENT**

FP Nov. 3/62

No

Four Big Yukon Explorers Score Big Lead, Zinc Find

A quartet from among the country's leading explorers has uncovered a rich lead-zinc find in the Yukon.

The strike is north of Watson Lake, about 200 mi. east of Whitehorse. The mineralization is close to surface, includes silver and has been exposed by a bulldozer. The minerals occur in two main showings near the centre of a 24 sq. mile staked area.

Ground holder is the **Frances River Syndicate**. Backers are **Newconex Canadian Exploration**, **Canex Aerial Exploration** (subsidiary of **Placer Development**), **Kerr-Addison Gold Mines** and **Prospectors Airways**.

Speculation on the significance of the find circulated around Bay St. and was particularly concentrated in New-

conex shares which went from \$3.05 to \$4.50, settled back to \$4. The warrants jumped from 61c to \$1.50, dropped back to \$1.05.

This syndicate was formed last spring for Yukon work. It zeroed in on the lead-zinc discovery early in the season and has devoted most of its activity to the find which is on a high ridge. The two showings are some two miles apart, both at about 4,700 ft. elevation.

Here are results of the work, recessed a month ago for the long, far northern winter:

▶ South showing, after stripping, exposed massive primary sulphides which averaged 5.25 oz. silver, 34.4% lead and 18.3% zinc over a length of 170 ft. and across apparent widths up to 52 ft. and averaging about 34 ft.

Beyond this stretch, three trenches about 50 ft. apart revealed an additional 160 ft. which averaged 3.5 oz. silver, 11.6% lead and 5% zinc across apparent widths of 50 ft. This gives the sulphide-bearing zone an indicated length of 530 ft. and widths, dependent on dip, of 20-30 ft. The zone is open to the northwest for 100-200 ft., completely open on the south-east.

▶ North showing two miles away consists of lenses. Nine bulldozer trenches about 50 ft. apart were made across the zone of two or three separate lenses. For a length of 420 ft. aggregate averages were 1.2 oz. silver, 11.3% lead and 7.2% zinc across average width of about 25 ft.

The main sulphide lens is

about 250 ft. long and averages 1.3 oz. silver, 14.2% lead and 10% zinc across 42 ft. Other mineralization has been found some 1,000 ft. across the strike, to the east.

Officials say that between the north and south showings geochemical anomalies suggest "further possibilities" in the intervening two miles.

The group has built a 12-mile access road to the ground from the new Watson Lake-Ross River road. Next season's plans are likely to include further mapping, trenching and start of diamond drilling.

Lead-zinc prospect in Yukon

Frances River Syndicate, backed by four of the largest Canadian mining companies, reports a promising new lead-zinc-silver showing 35 miles north of Watson Lake, Yukon.

Manager and organizer of the syndicate is Dr. A. E. Aho, Vancouver, consulting geological engineer. Backers are Newconex Canadian Exploration, Canex Aerial Exploration, each with one-third participation, and Kerr-Addison Gold Mines and Anglo - Huronian Ltd., each with one-sixth.

The strike was made in June by Jacob Hundere and Peter Ritco, prospecting a completely virgin area northwest of Tom Lake, under direction of Dr. Aho and R. E. G. Davis, geologist.

Nine bulldozer trenches about 50 feet apart across the zone of two or three separate lenses have proved up a length of 420 feet with an aggregate average giving 1.2 ounces per ton silver, 11.3 per cent lead and 7.2 per cent zinc, across aggregate average width of about 25 feet.

To cover all the favorable ground 320 claims have been staked. Twelve miles of access road have been built to the property from the Watson Lake-Ross River road and a limited amount of bulldozer trenching was done in late September.

Next season's work will probably include mapping, geochemistry, geophysics, trending and diamond drilling.

is that a wo... able re...
he around \$2,250 million.

Four Firms To Develop Ore Prospect

A lead-zinc-silver discovery made this summer in the Yukon is being developed by a syndicate backed by four mining companies.

The property is about 40 miles north of the B.C. boundary and 35 miles north of Watson Lake on the Alaska Highway. It is 800 air miles northwest of Vancouver.

The Frances River syndicate has staked 320 claims (24 square miles) and built 12 miles of access road.

The syndicate, managed by consulting geologist Dr. A. E. Aho, is backed by Canex Aerial Exploration (a division of Canadian Exploration), and Newconex Canadian Exploration, each with one-third interest; Kerr-Addison Gold Mines and Anglo-Huronian Ltd., each with one-sixth.

The discovery was made by Jacob Hundere and Peter Ritco in an area that has been tramped over by others. The area, however, is covered with overburden. The two main showings were found as zones of float and frost heave two miles apart at 4,700 feet elevation. Work has stopped for the winter.

**Ph
Ca
Eu**

Very
the b
sudden
The s
be ta
ness v
cash
Vernor

Larg
butic
lent
in o
is a
tion
with
conf

es From

S
Rec
woo