

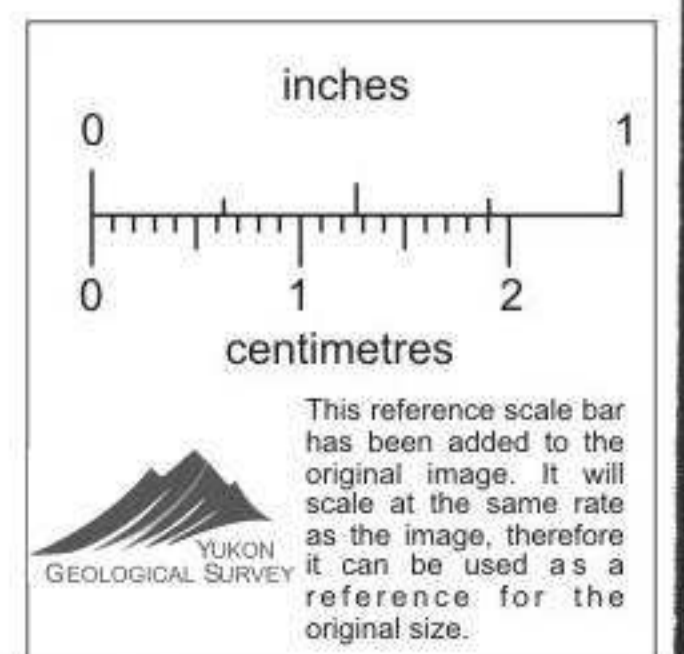
LIARD 75 76
73 74

LIARD 83 84

ATLAS EXPLORATIONS LTD.
ROSS RIVER, YUKON
OLD GOLD AREA
LIARD MINERAL CLAIMS "D" GRID
GEOCHEMICAL SOIL SAMPLING SURVEY
ZINC RESULTS, CONTOUR MAP

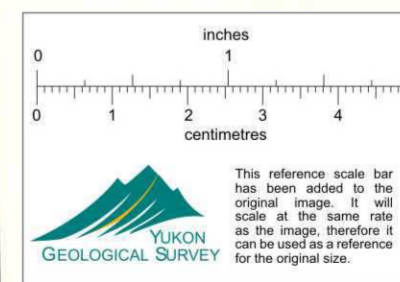
Scale: 1" = 400'
Contour interval: 10 p.p.m.
Soil sampler: B Spanier
Party chief: R. Harvey
Date: June 1966
Drawn by J.N.B.

Claim post LIARD 71 72
69 70

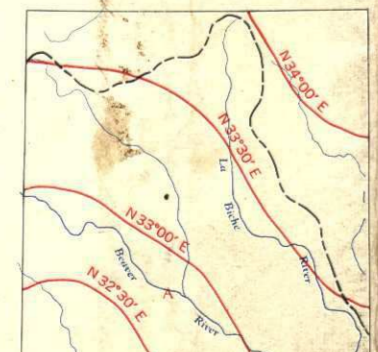




DAVIS in at air drop site
 Thru evening June 6



THE DECLINATION OF THE COMPASS NEEDLE 1958



The declination of the compass needle at any place along a red line is the declination given on that red line. At other places the declination is between three lines on the right-hand side of the red line and three lines on the left-hand side of the red line. The declination is between 1° 30' E and 2° 30' E. The westerly declinations of the compass needle are decreasing 2 minutes annually.

Surveyed, compiled, drawn and printed by the ARMY SURVEY ESTABLISHMENT R.C.E. 1953-59. Aerial photography by the R.C.A.F. 1949.

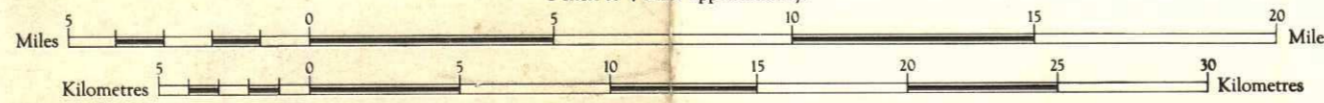
REFERENCE

Road, Hard Surface, All Weather	More than 2 Lanes Wide
Do. Do. Do. Do. Do.	2 Lanes
Do. Do. Do. Do. Do.	1 Lane Wide or More
Lower Surface, All Weather	
Do. Do. Do. Do. Do.	Less than 2 Lanes
Cart Track, Trail	Cart Track
Railway, Multiple Track	Trail
Do. Do. Do. Do. Do.	Single Track
Boundary, International	
Do. Do. Do. Do. Do.	
Province or State	
County or District	
Reservation, Indian, Military, etc.	

LA BICHE RIVER
 YUKON TERRITORY ~ NORTHWEST TERRITORIES

WEST OF THE SIXTH MERIDIAN

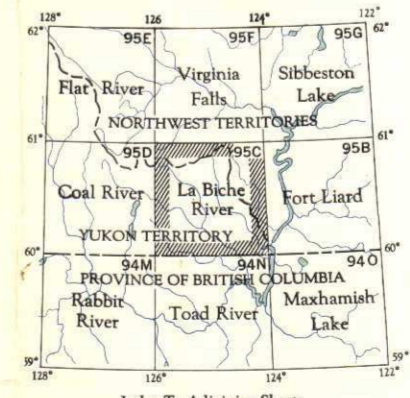
Scale 1:250,000
 1 inch to 4 Miles approximately.



Copies may be obtained from The Map Distribution Office, Dept. of Mines and Technical Surveys, Ottawa, at 25 cents each.

REFERENCE

Church, School	Horizontal Control Point
Settlement, Town	Spot Elevation, in feet
Contour, Elevation	Forest, wooded
Depression	Swamp or Marsh
Approximate	
Dry River Bed	
Stream, Incumbent	
Dam	Lighthouse
Fall	
Airfield, on land	Landing Ground
Power Transmission Line	Anchorages



LA BICHE RIVER
 SHEET 95 C

GUSTY LAKES - BEAVER RIVER AREA

Geology and Geochemistry

Legend

- Rock Types**
- Quartzite, quartz pebble conglomerate
 - Limestone, limy dolomite
 - Shale
 - Argillite
 - Sandstone, greywacke, conglomerate
 - Volcanic rocks, mainly greenstone, andesite, basalt and breccia
 - Syenite
 - Gabbro

- Structure**
- Bedding
 - Foliation
 - Joint
 - Fault
 - Mineral occurrence
 - Transported limonite deposit

- Geochemistry**
- Silt sample site
 - Cu ppm
 - Zn ppm
 - X < 10 ppm
 - Zn Field Test
 - 0 - 0.5 ml of dithizone to end point
 - 1-2
 - 3-5
 - 6-10
 - >10
 - Dithizone solution strength 0.01 gm per 100 cc.

1 Mile (approx)

