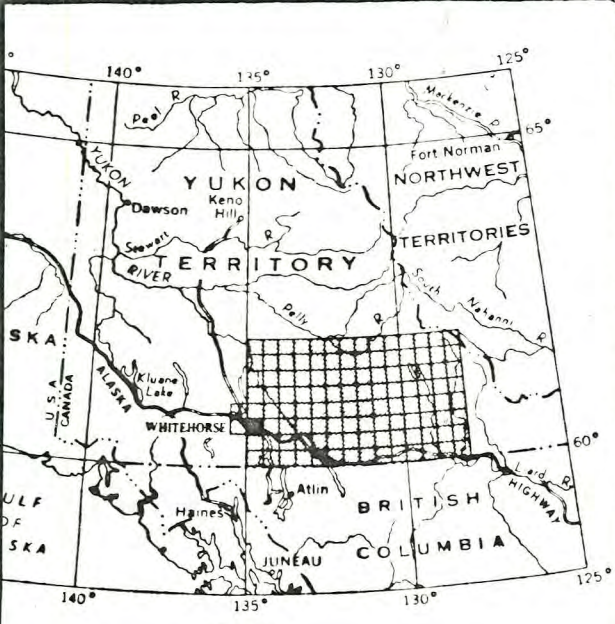
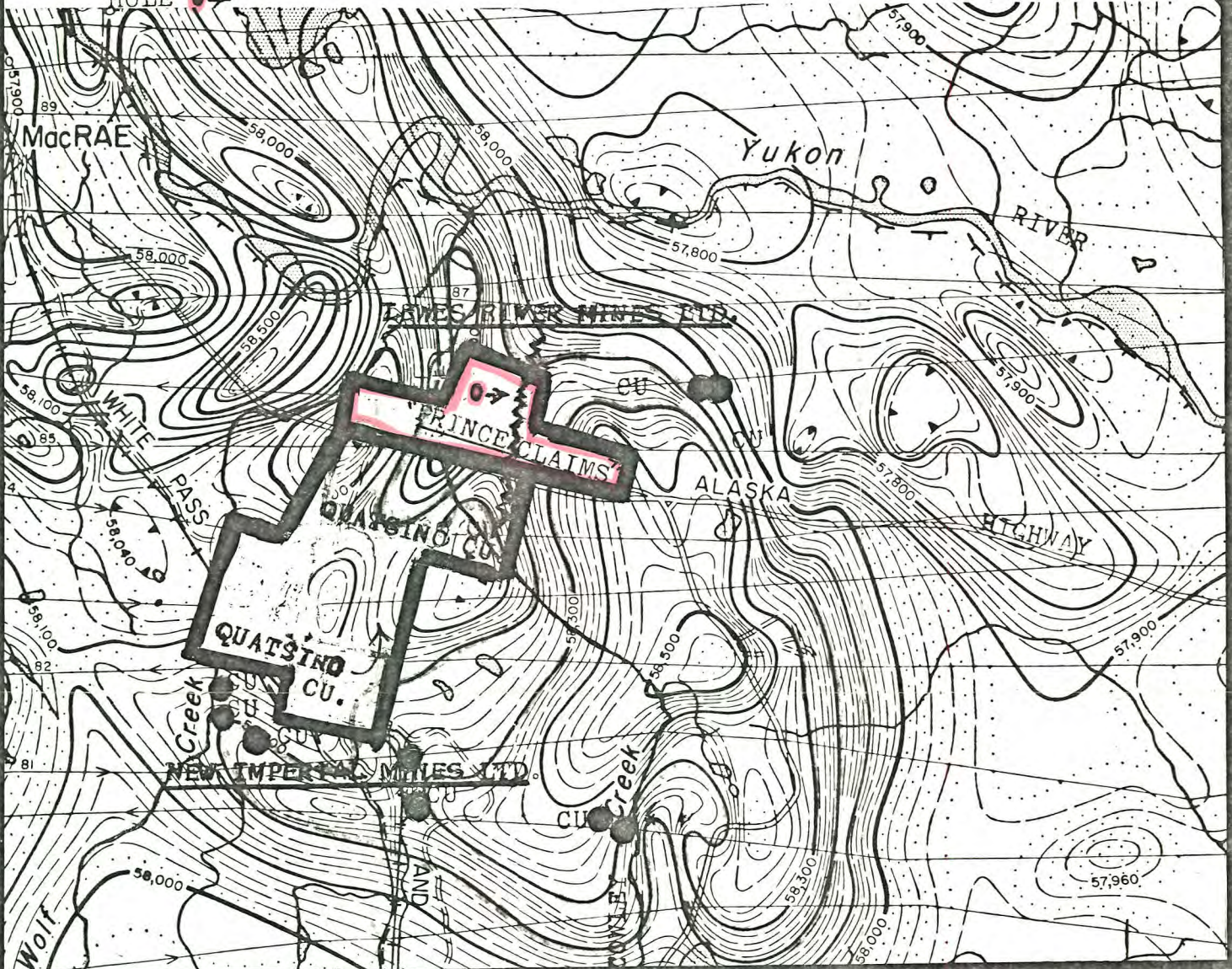


COPPER
SILVER ● CU
GOLD

12 Chap. Sub. Whitehorse
"PRINCE CLAIMS"
A GEOLOGICAL BET
BETWEEN
LEWES RIVER MINES LTD.
AND
NEW IMPERIAL MINES LTD.

PHONE
WHITEHORSE
667-2492 105-D
L.G. BARRETT,
BOX 1122.

PROPOSED D.D.
HOLE →



MAP 1341G

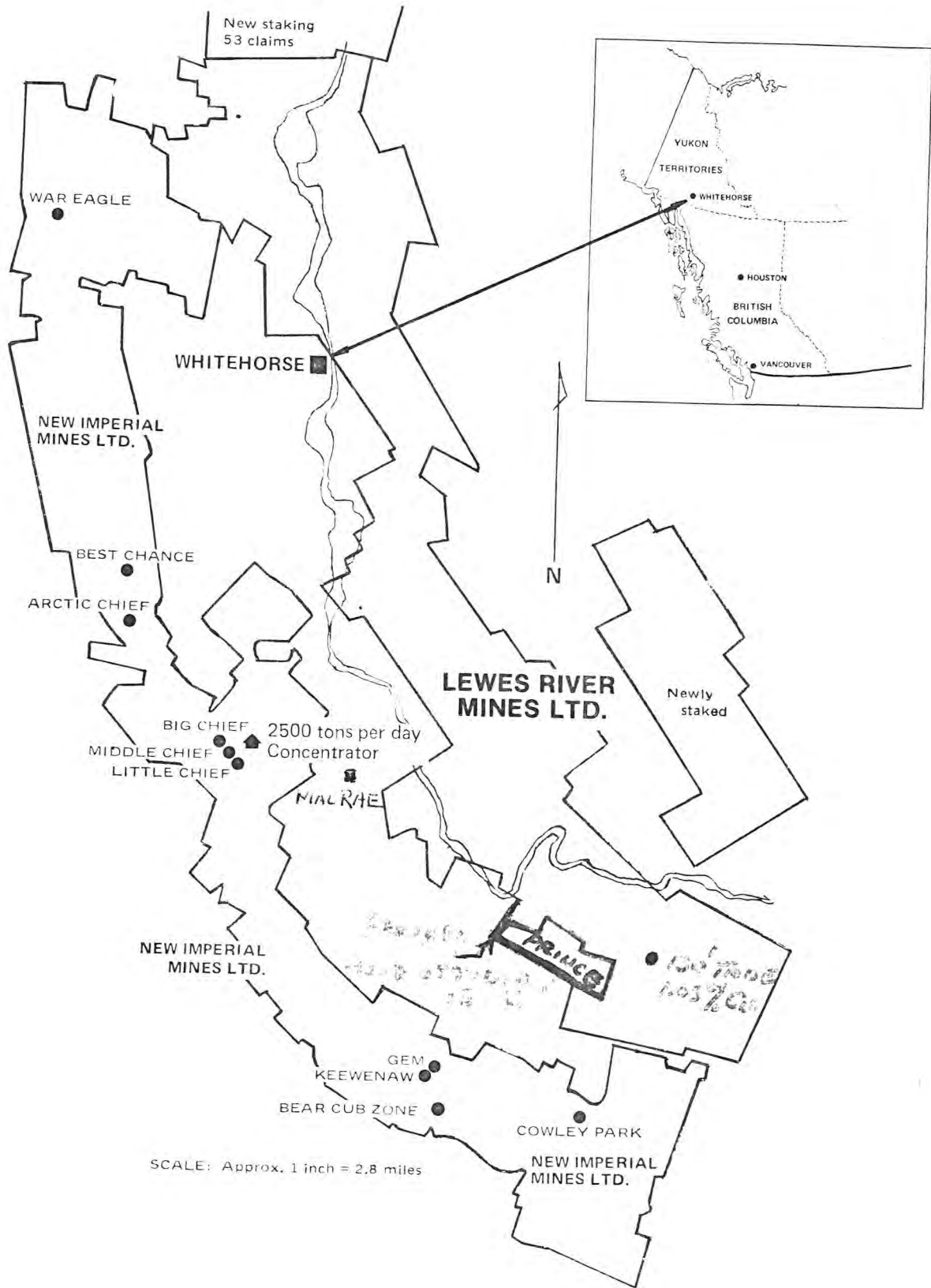
MacRAE YUKON TERRITORY

Scale: One Inch to One Mile = $\frac{1}{63,360}$
Miles



Air photographs covering this map-area may be obtained through the National Air Photographic Library, Topographical Survey, Ottawa, Ontario.

013522



CU-AU-AG-Mo.

APRIL 1971

