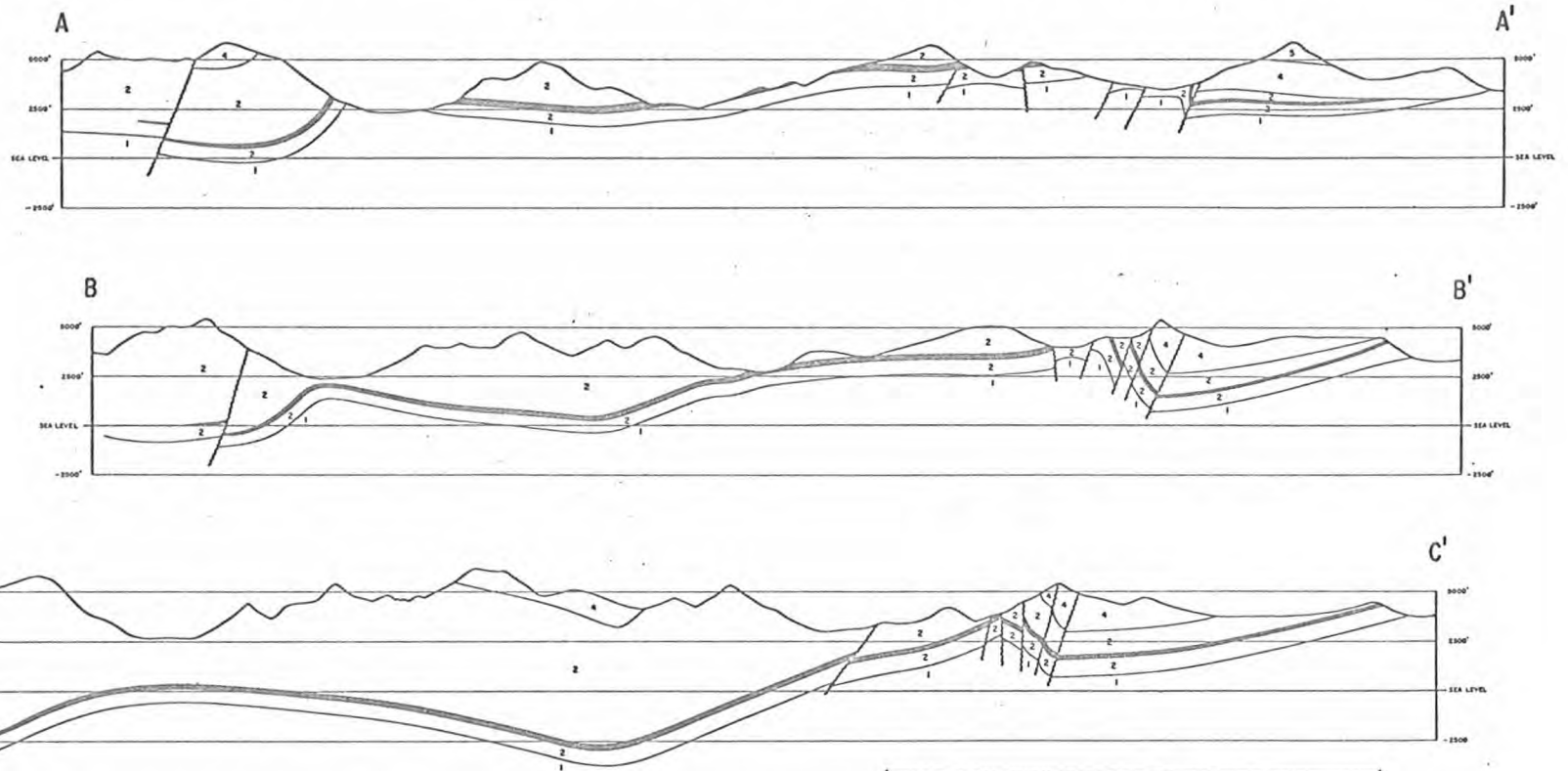


106-F.

013560

Snake River Area Structural Cross Sections



5 MILES

LEGEND

SILURO-ORDOVICIAN

5 BLOCKY CARBONATE

CAMBRO-ORDOVICIAN

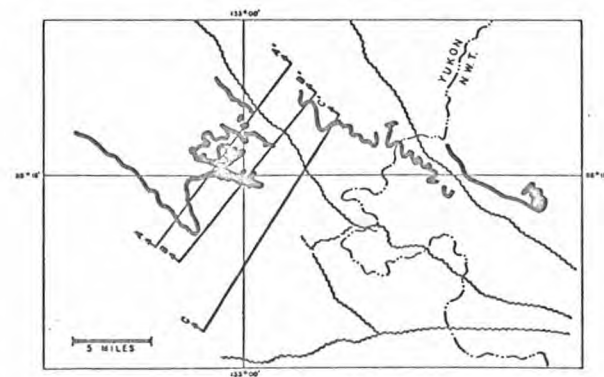
4 CARBONATE (Upper shaly, lower blocky with major unconformity at base.)

CAMBRIAN?

3 SHALE

2 SHALY CONGLOMERATE WITH IRON FORMATION

1 UNDIFFERENTIATED

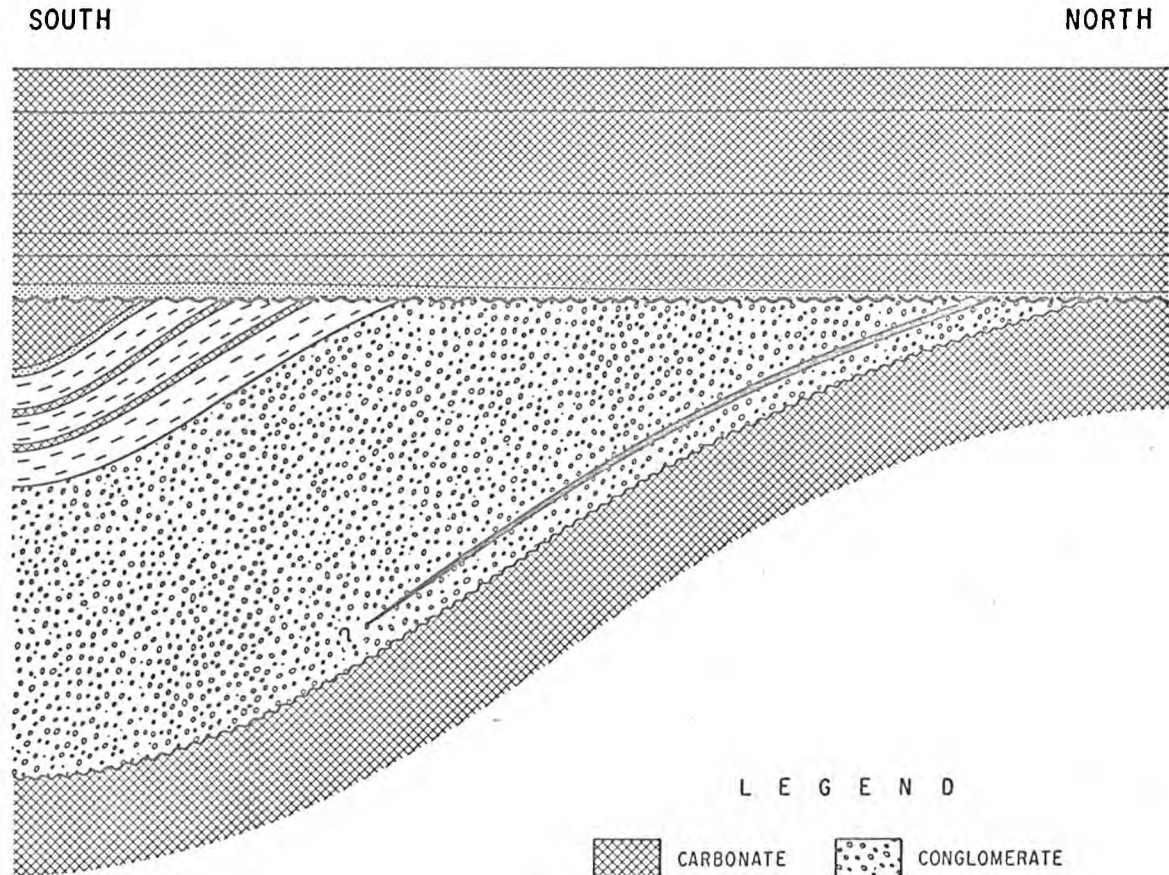


LOCATION MAP

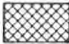
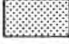
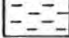
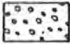

DIAGRAMMATIC STRATIGRAPHIC CROSS SECTION

SHOWING NORTHWARD TRUNCATION OF MAP UNITS 2 AND 3

MAP UNITS	PERIOD	APPROXIMATE THICKNESS
7	MID. DEVONIAN	1000'
6	SILURO-DEVONIAN	2000'
5	SIL. ORDOVICIAN	1000'
4	ORDOVICIAN	500'
	U & M. CAMBRIAN	1000 - 1500'
3	CAMBRIAN ?	4500 - 5000'
2	CAMBRIAN ?	7000'+
1	CAMBRIAN ?	8000'+



LEGEND

-  CARBONATE
-  QUARTZITE
-  SHALE
-  CONGLOMERATE
-  IRON FORMATION

1 Mi - VERTICAL

3 Mi - HORIZONTAL