

013635

VOLUME III to Accompany

SUMMARY REPORT

MACMILLAN PROJECT 1976

N.T.S. 105 G, H, I, J, K, N, O and P  
CYPRUS ANVIL MINING CORPORATION  
by

W. Roberts                      March 31, 1977

VOLUME III of III

**FILE COPY**

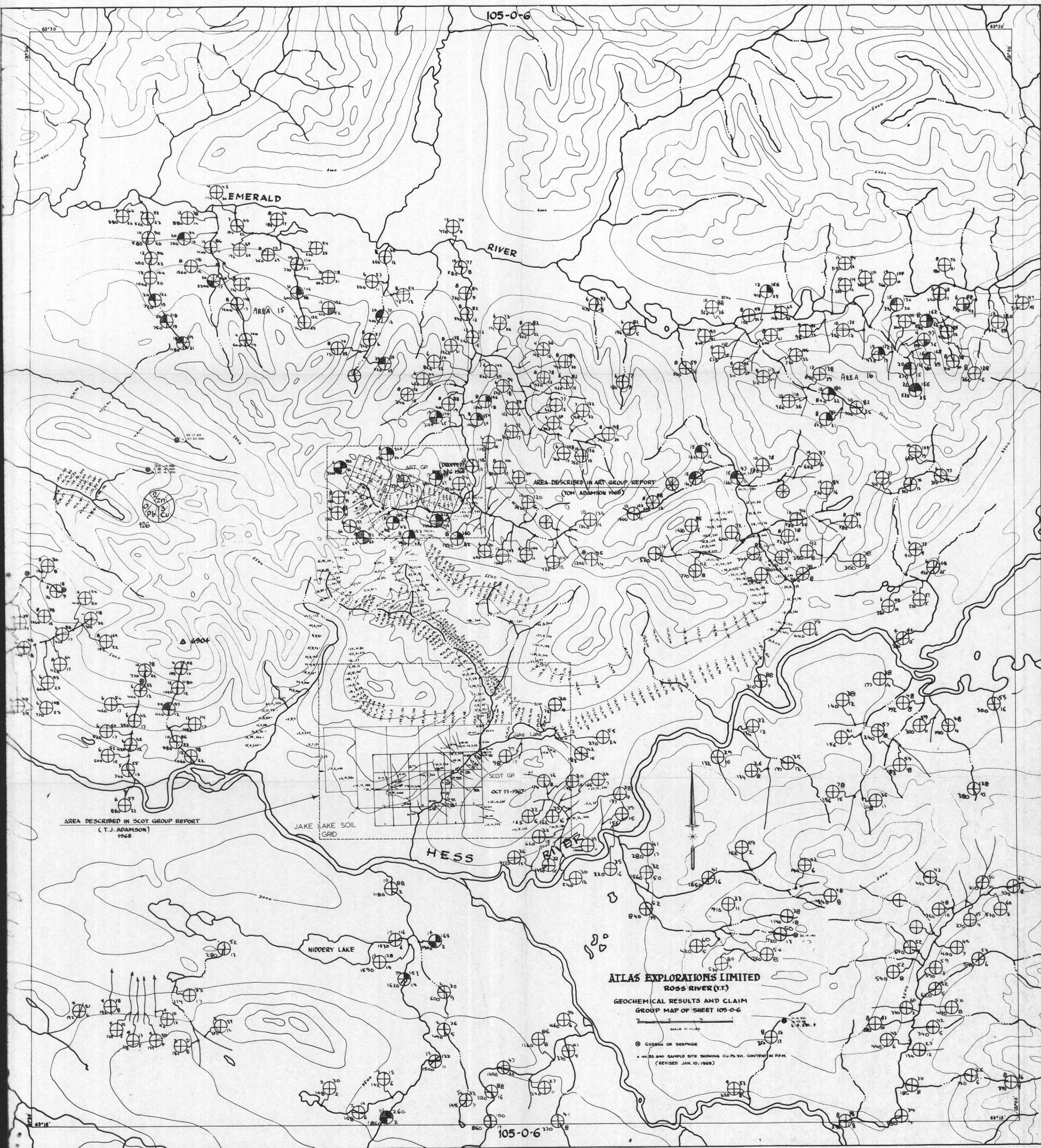
VOLUME III

	<u>N.T.S.</u>	<u>SCALE</u>
Geochemical Maps	105 0 - 6	1" = 1 mile
		1" = ½ mile
Geochemical Maps	105 0 - 7	1" = 1 mile
Geochemical Maps	105 0 - 8	1" = 1 mile
Geochemical Maps	105 0 - 10	1" = 1 mile
Geochemical Maps	105 0 - 11	1" = 1 mile
		1" = ½ mile
Geochemical Maps	105 0 - 12	1" = 1 mile
Geochemical Maps	105 P - 4	1" = 1 mile
		1" = ½ mile
Geochemical Maps	105 P - 5	1" = 1 mile
		1" = ½ mile
Geochemical Maps	106 C - 3	1" = 1 mile

GEOCHEMICAL MAP  
N.T.S. 105 0 6  
1" = 1 mile

GEOCHEMICAL MAP  
N.T.S. 105 0 6  
1" =  $\frac{1}{2}$  mile

001 -  
006



**ATLAS EXPLORATIONS LIMITED**  
**ROSS RIVER (I.T.)**

GEOCHEMICAL RESULTS AND CLAIM  
 GROUP MAP OF SHEET 105-0-6

SCALE IN METERS

⊙ GOSMAN OR SEEPAGE

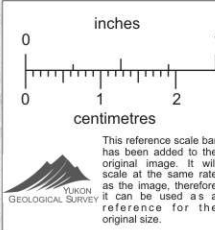
• 44-85-640 SAMPLE SITE SHOWING CU-Pb-ZN CONTENT IN PPM.

(REVISED JAN. 10, 1969)

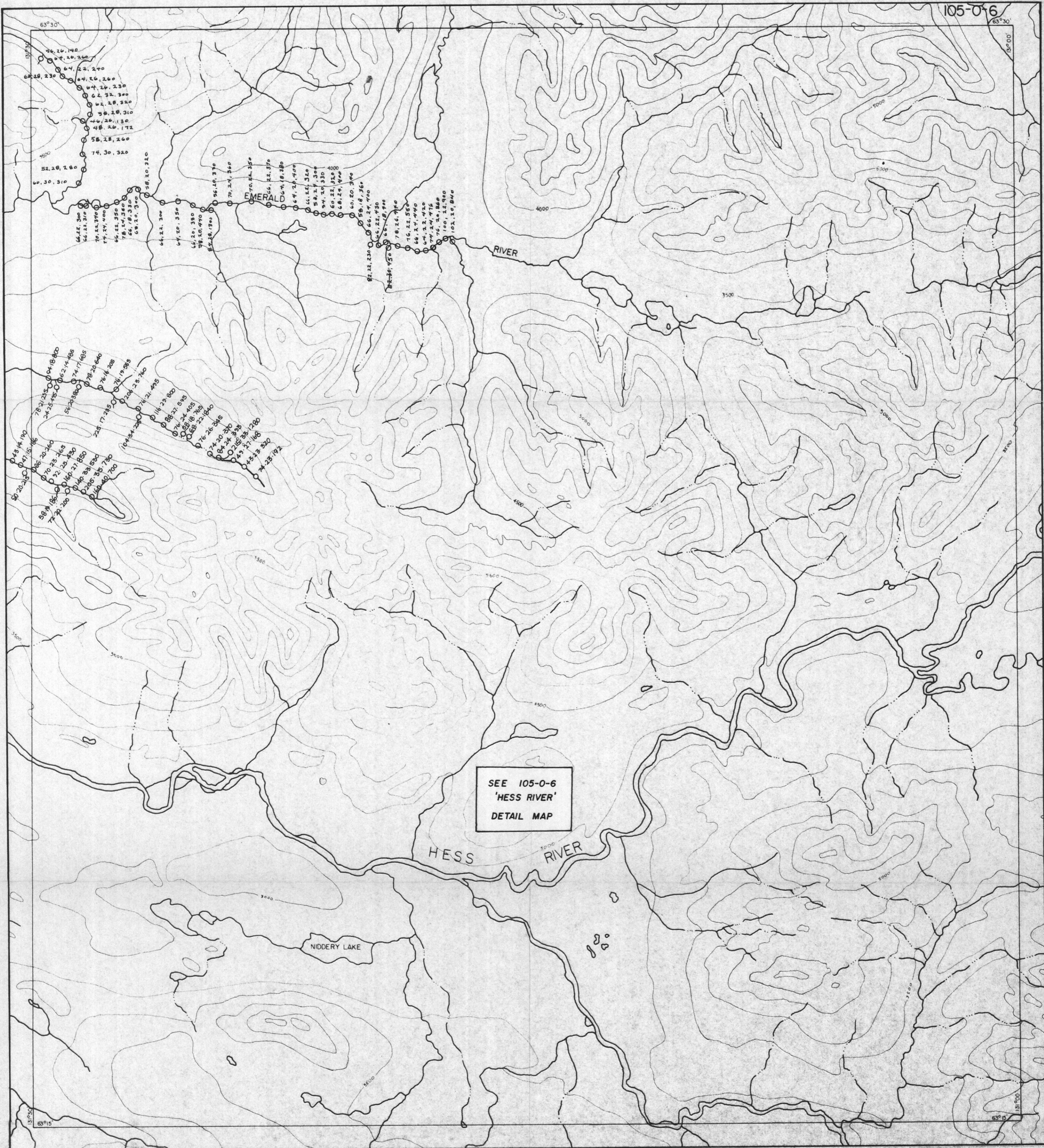
1" = 1 MILE

Mo  
Cu  
Pb  
Zn  
SILT SAMPLE RESULTS (ppm)

Fig. 20



GEOCHEM. 105-0/10

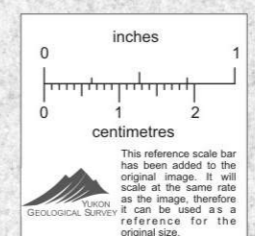


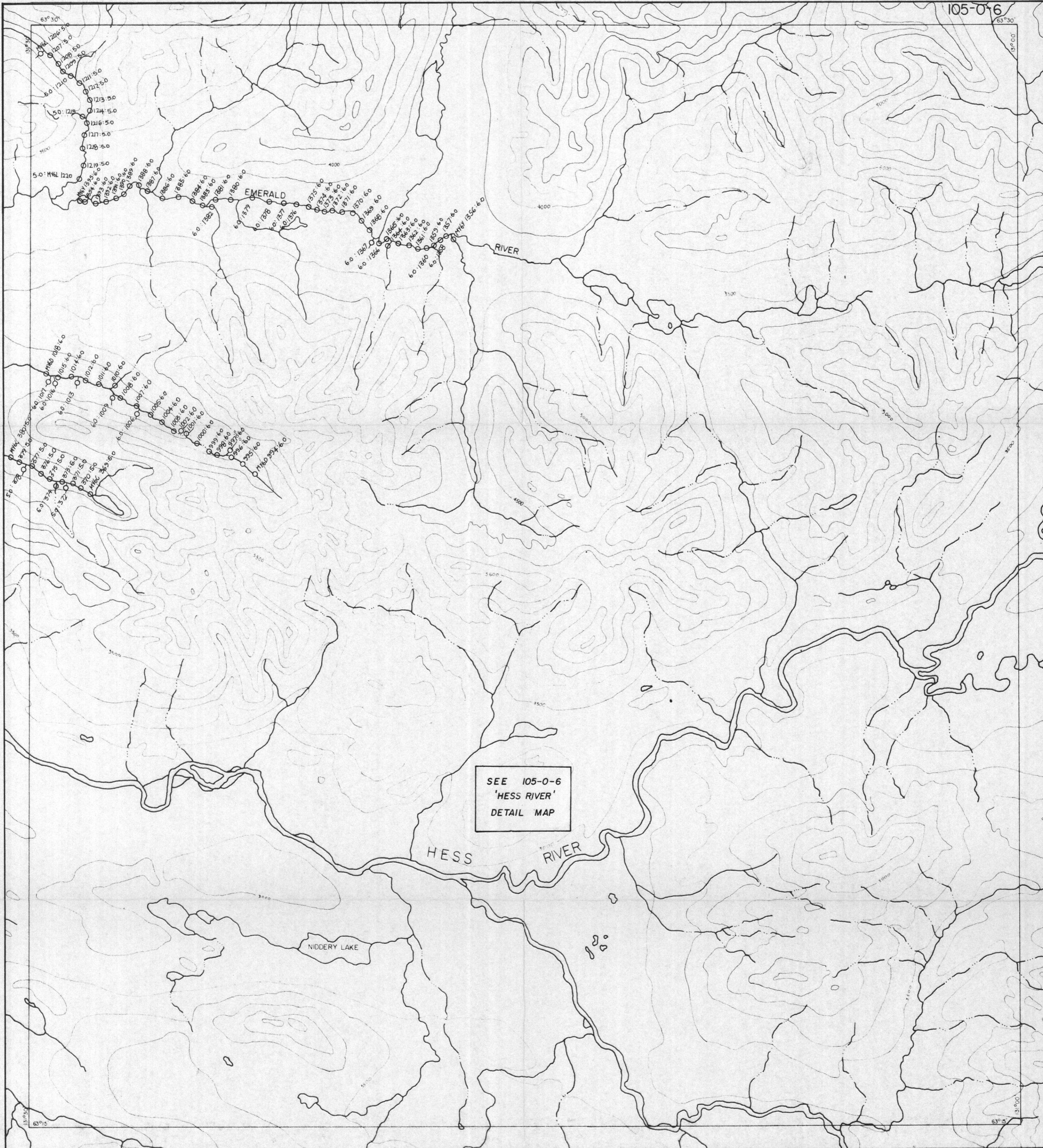
GEOCHEMICAL RESULTS

- SILT
- SOIL
- × ROCK

LEGEND

ANALYSIS IN PPM  
 27, 45, 76, 30  
 Cu, Pb, Zn, Ba



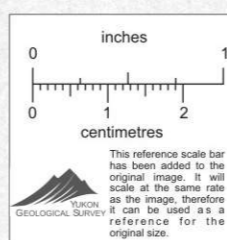


### GEOCHEMICAL SAMPLE STATIONS

- SILT
- SOIL
- ROCK

### LEGEND

- M · MACMILLAN PROJECT
- Y · OEX
- 6 · 1976
- Q · SAMPLER
- (6.0) pH



105-0-6

SCALE: 1 IN = 1 MI





CYPRUS ANVIL MINING CORPORATION

MACMILLAN PROJECT

105-0-6

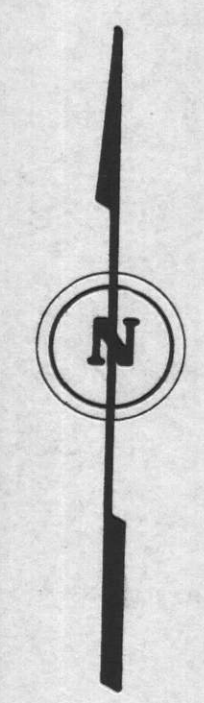
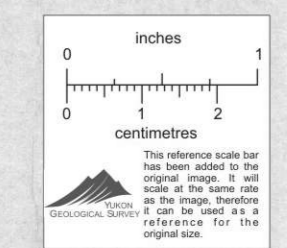
DETAIL AREA

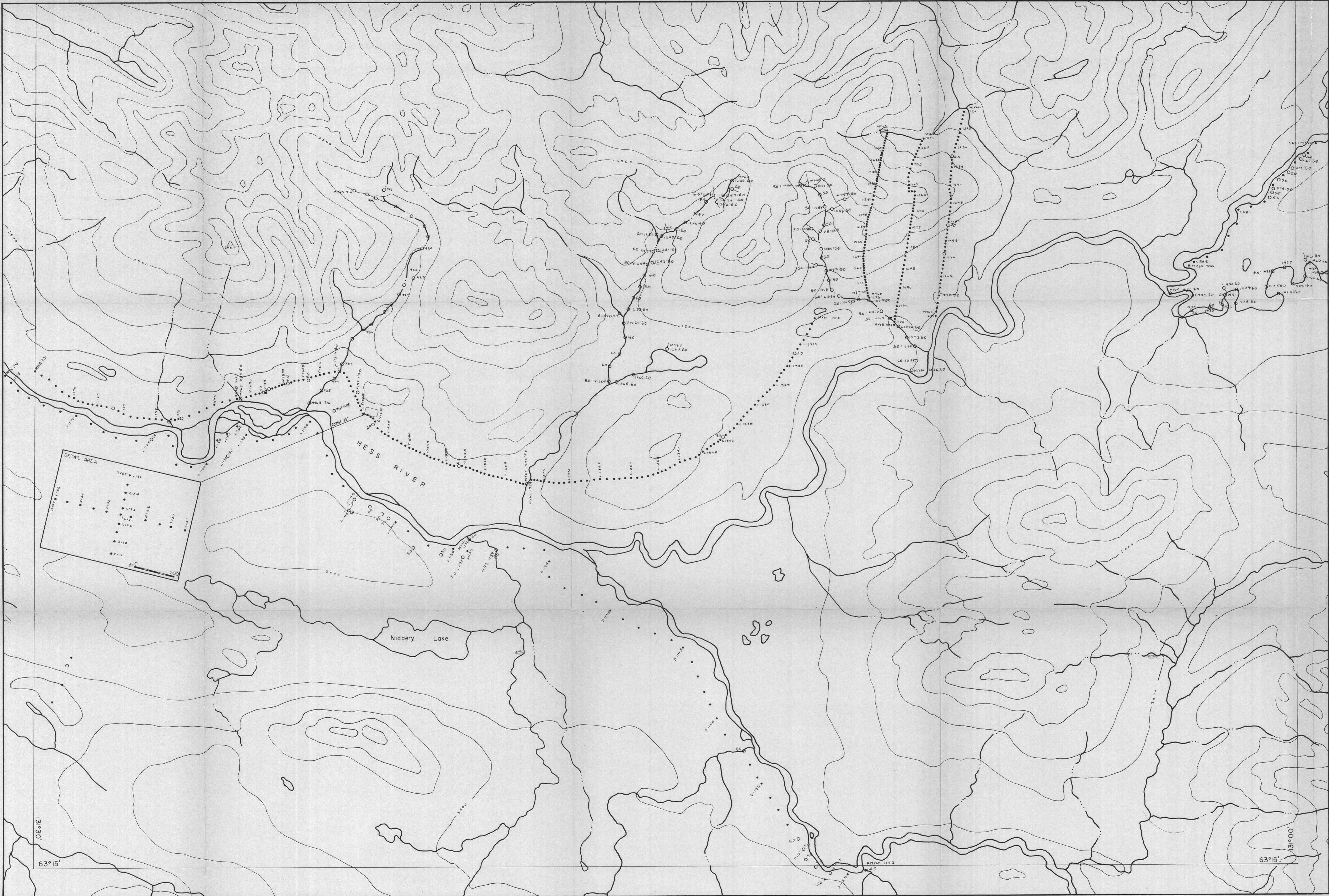
SCALE: 1 inch = 1/2 mile

- soil •
- silt ○

GEOCHEM VALUES:

Cu, Pb, Zn, Ba (ppm)





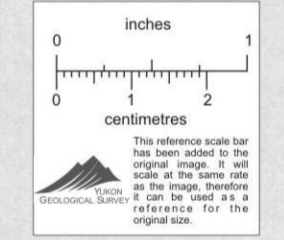
CYPRUS ANVIL MINING CORPORATION

MACMILLAN PROJECT

105-0-6

DETAIL AREA

SCALE: 1 inch = 1/2 mile



63°15'

131°30'

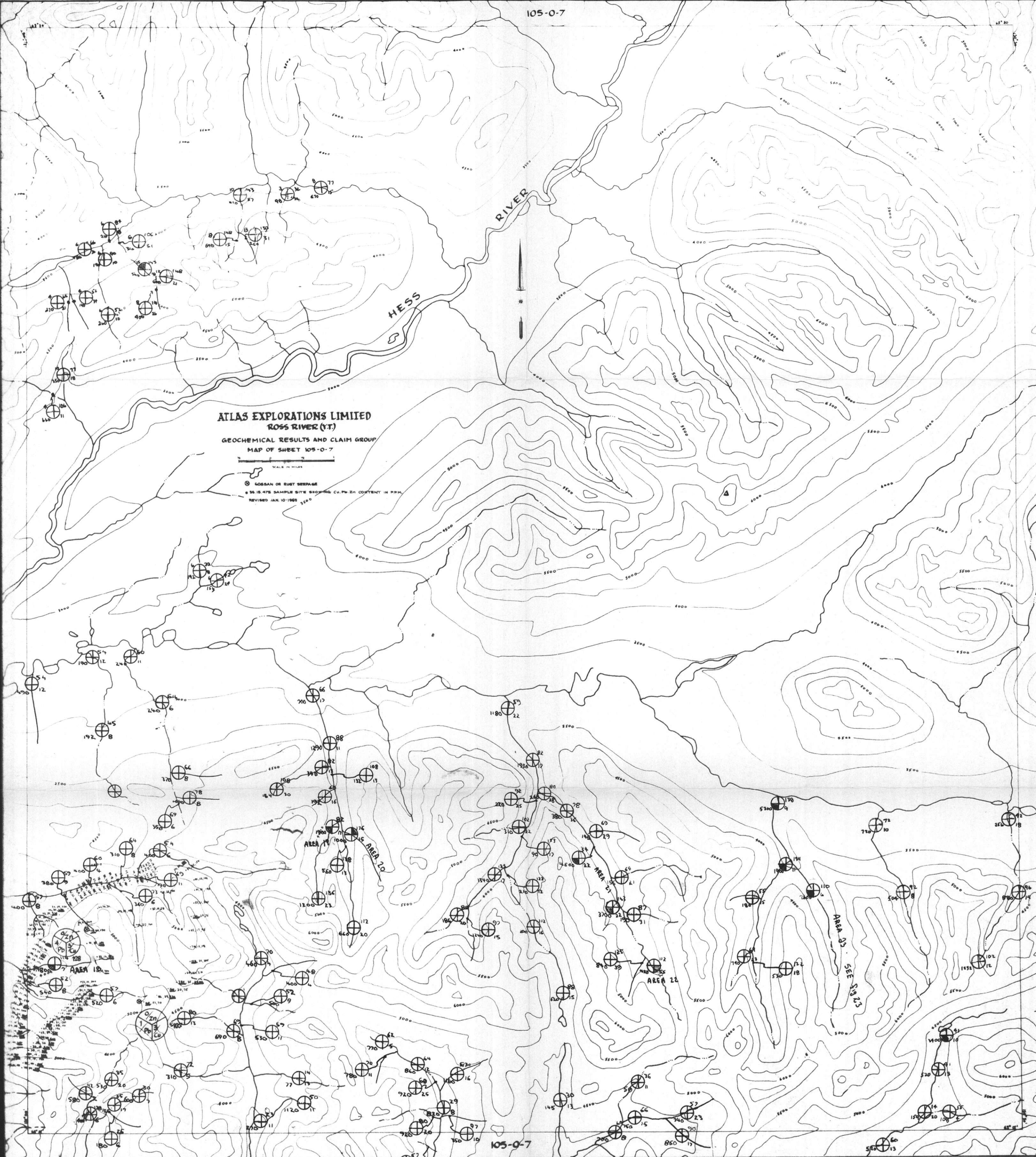
GEOCHEMICAL MAP  
N.T.S. 105 0 7  
1" = 1 mile

006  
009

ATLAS EXPLORATIONS LIMITED  
ROSS RIVER (Y.T.)  
GEOCHEMICAL RESULTS AND CLAIM GROUP  
MAP OF SHEET 105-0-7

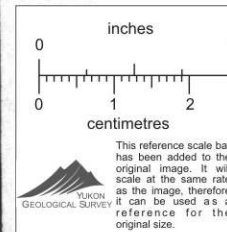
SCALE IN MILES

⊕ GOSAN OR RUST SEEPAGE  
⊙ 36 IS-476 SAMPLE SITE SHOWING CU, Pb, Zn CONTENT IN PPM  
REVISED JAN. 10/1968



1" : 1 MILE

⊕ Cu  
⊙ Zn Pb SILT SAMPLE RESULTS (ppm)



105-0-7

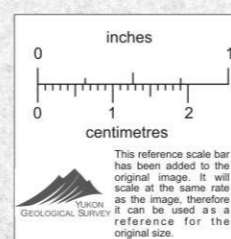


### GEOCHEMICAL RESULTS

- SILT
- SOIL
- × ROCK

### LEGEND

ANALYSIS IN PPM  
27, 45, 76, 30  
Cu, Pb, Zn, Ba



105-0-7

SCALE: 1 IN = 1 MI



105-0-7

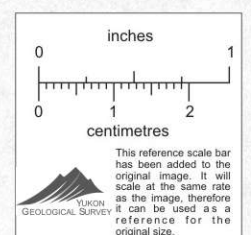


### GEOCHEMICAL SAMPLE STATIONS

- SILT
- SOIL
- × ROCK

### LEGEND

- M · MACMILLAN PROJECT
- Y · OEX
- 6 · 1976
- Q · SAMPLER
- (6.0) · pH



105-0-7

SCALE: 1 IN = 1 MI

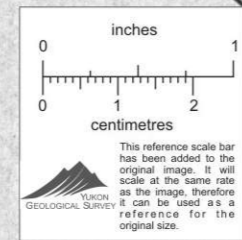




**ATLAS EXPLORATIONS LIMITED**  
**ROSS RIVER (Y.T.)**  
**GEOCHEMICAL RESULTS AND CLAIM GROUP**  
**MAP OF SHEET 105-0-7**

SCALE IN MILES  
 0 1 2

⊙ GOSSAN OR RUST SHEPAGE  
 @ 35.15.475 SAMPLE SITE SHOWING CU-Pb-ZN CONTENT IN P.P.M.  
 REVISED JAN. 10-1969



*Macmillan Project 1975*  
 ↓

GEOCHEMICAL MAP  
N.T.S. 105 0 8  
1" = 1 mile

Q10 -  
Q12



MAP 4361 G

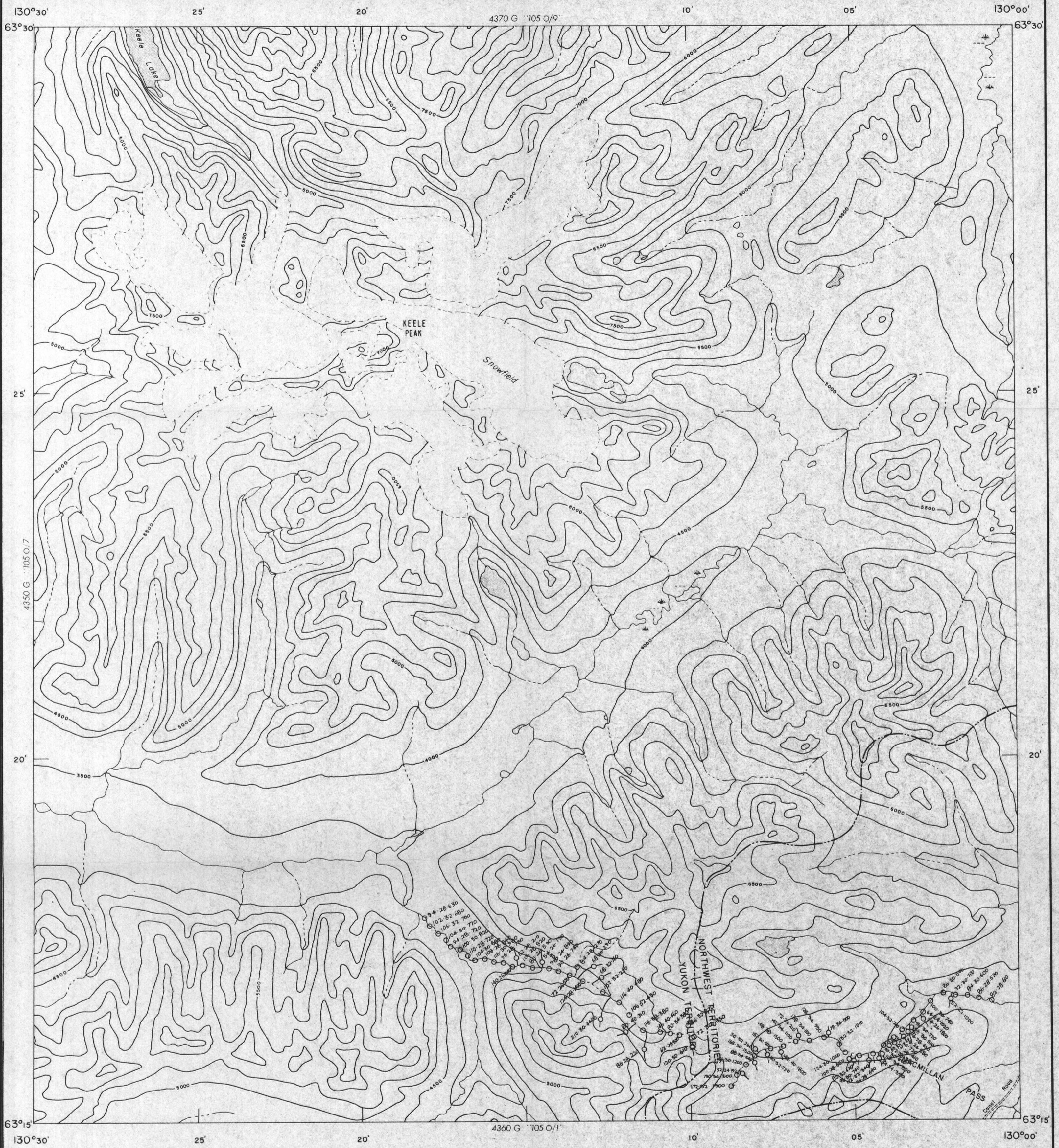
SILT SAMPLE RESULTS (ppm)

PUBLISHED, 1968

# KEELE PEAK

fig 25  
**Geochem 105-9/8**

The magnetic data on this map were  
compiled along the flight lines shown.



GEOCHEMICAL RESULTS

- SILT
- SOIL
- × ROCK

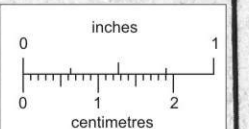
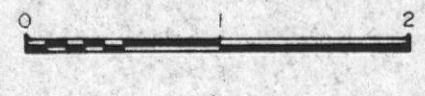
LEGEND

ANALYSIS IN PPM  
27, 45, 76, 30  
Cu, Pb, Zn, Ba

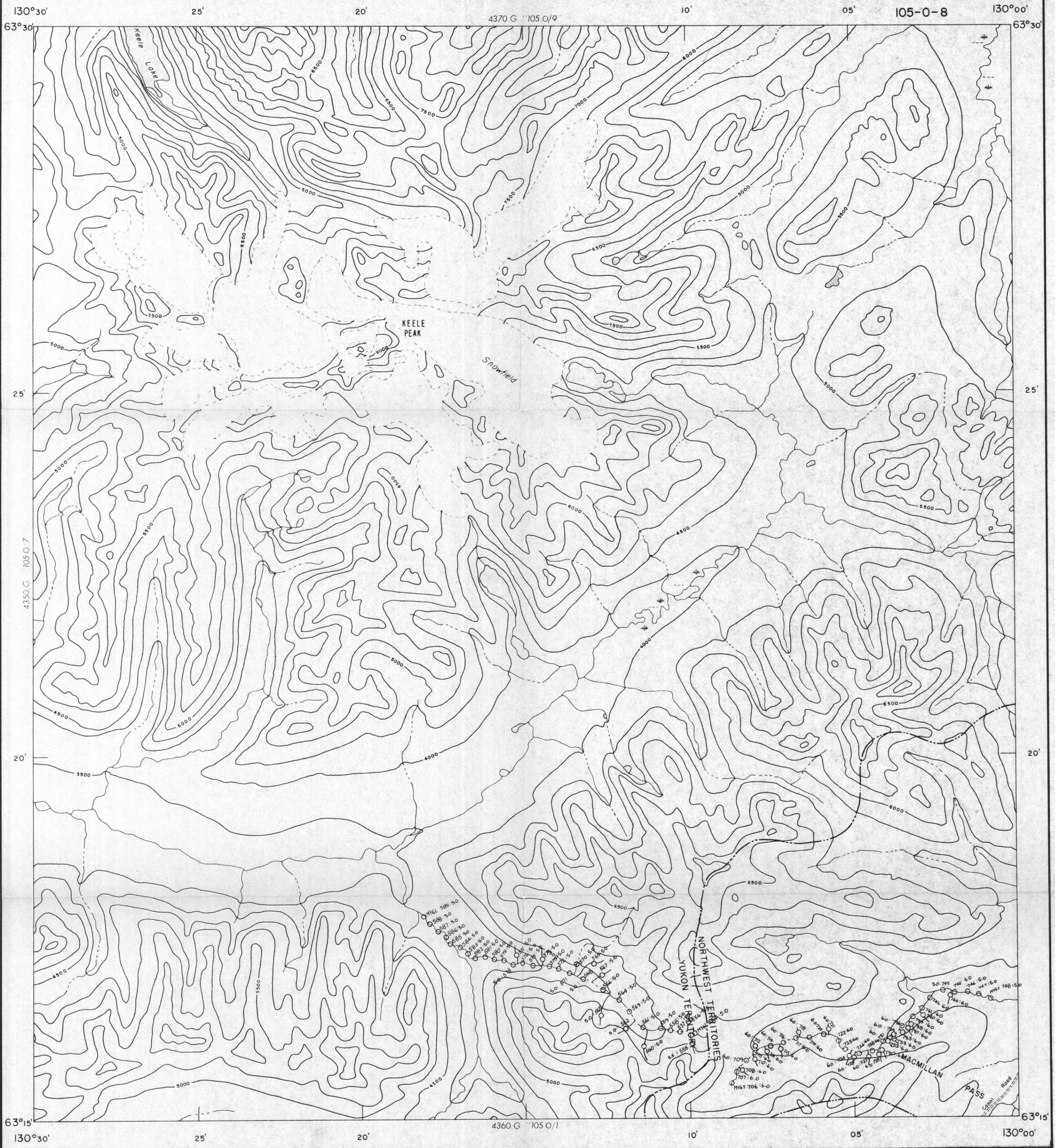


105-0-8

SCALE: 1 IN = 1 MI



The reference scale bar has been added to the original image. It will scale at the same rate as the image, therefore it can be used as a reference for the original size.



GEOCHEMICAL SAMPLE STATIONS

- SILT
- SOIL
- ROCK

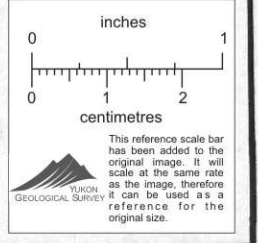
LEGEND

- M MACMILLAN PROJECT
- Y OEX
- 6 1976
- Q SAMPLER
- (6.0) pH



105-0-8

SCALE: 1 IN = 1 MI



GEOCHEMICAL MAP  
N.T.S. 105 0 10  
1" = 1 mile

013 -  
014





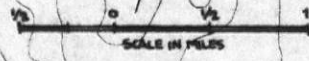
GEOCHEMICAL MAP  
N.T.S. 105 0 11  
1" = 1 mile

GEOCHEMICAL MAP  
N.T.S. 105 0 11  
1" =  $\frac{1}{2}$  mile

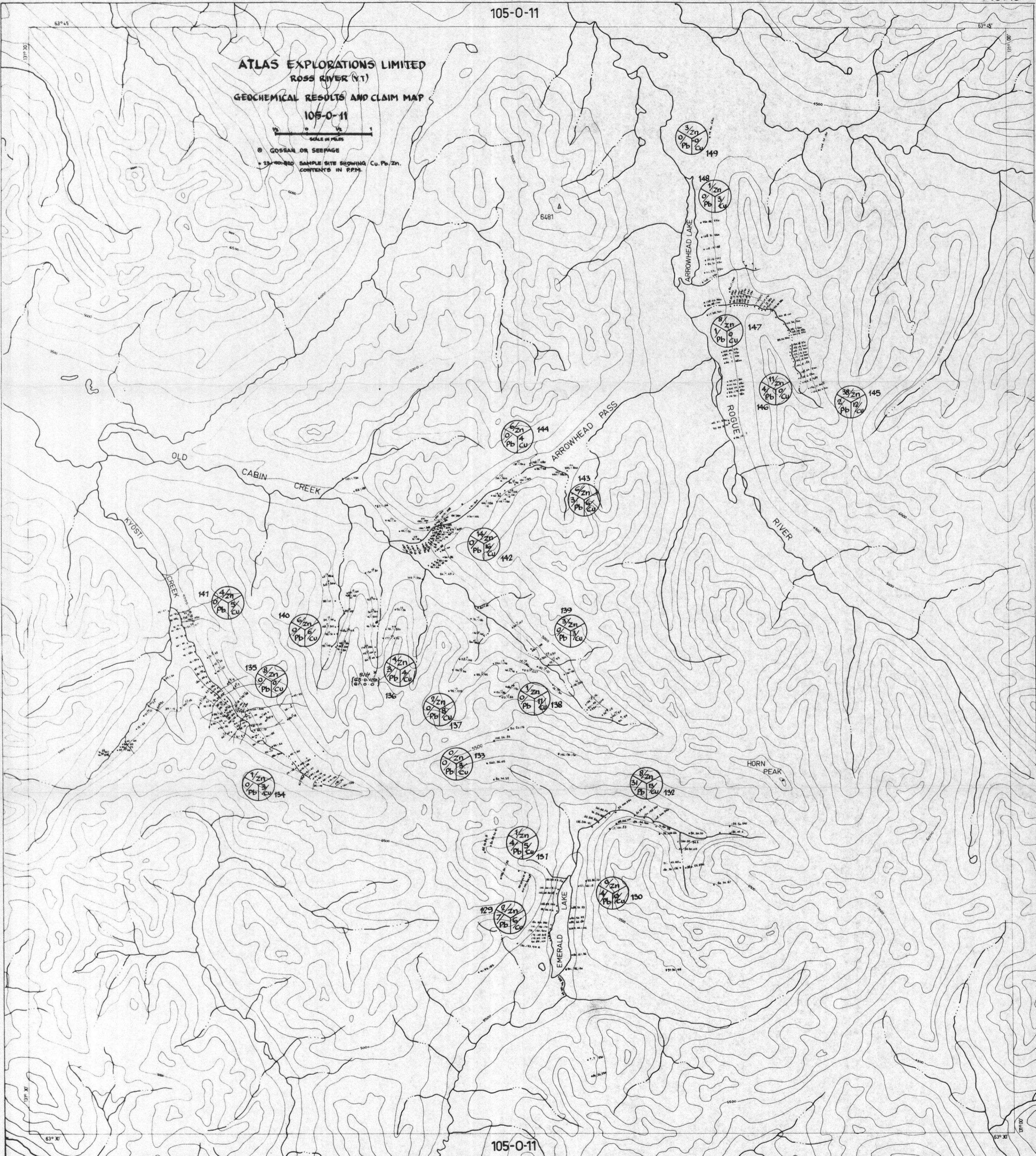
015-  
018

105-0-11

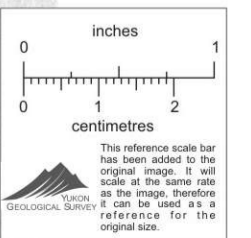
ATLAS EXPLORATIONS LIMITED  
 ROSS RIVER (Y.T.)  
 GEOCHEMICAL RESULTS AND CLAIM MAP  
 105-0-11

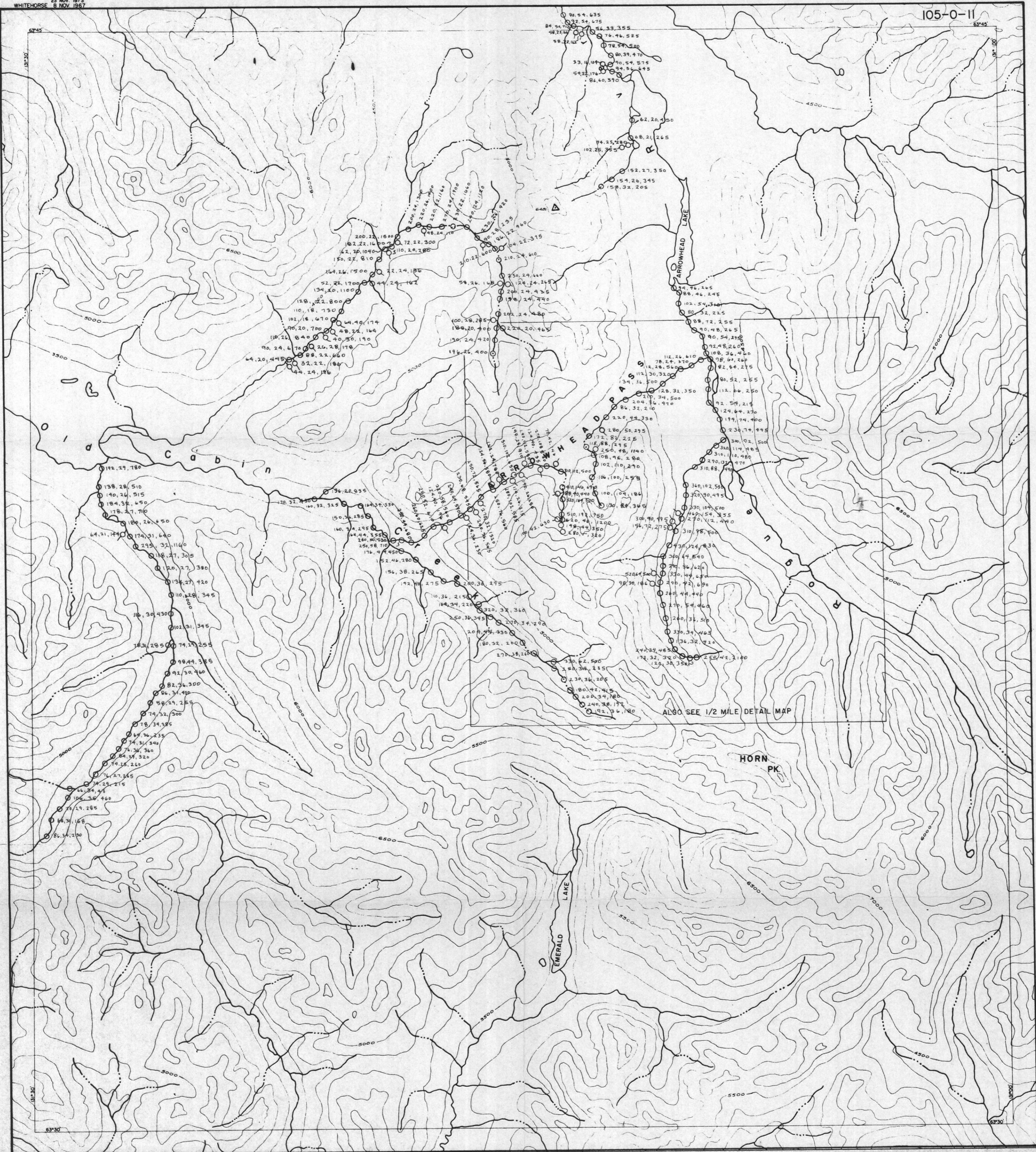


○ GOSSAN OR SEEPAGE  
 \* SAMPLE SITE SHOWING Cu, Pb, Zn CONTENTS IN PPM.



105-0-11





### GEOCHEMICAL RESULTS

- SILT
- SOIL
- × ROCK

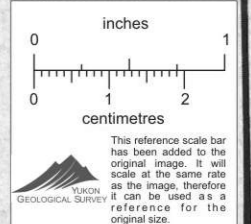
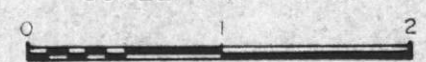
### LEGEND

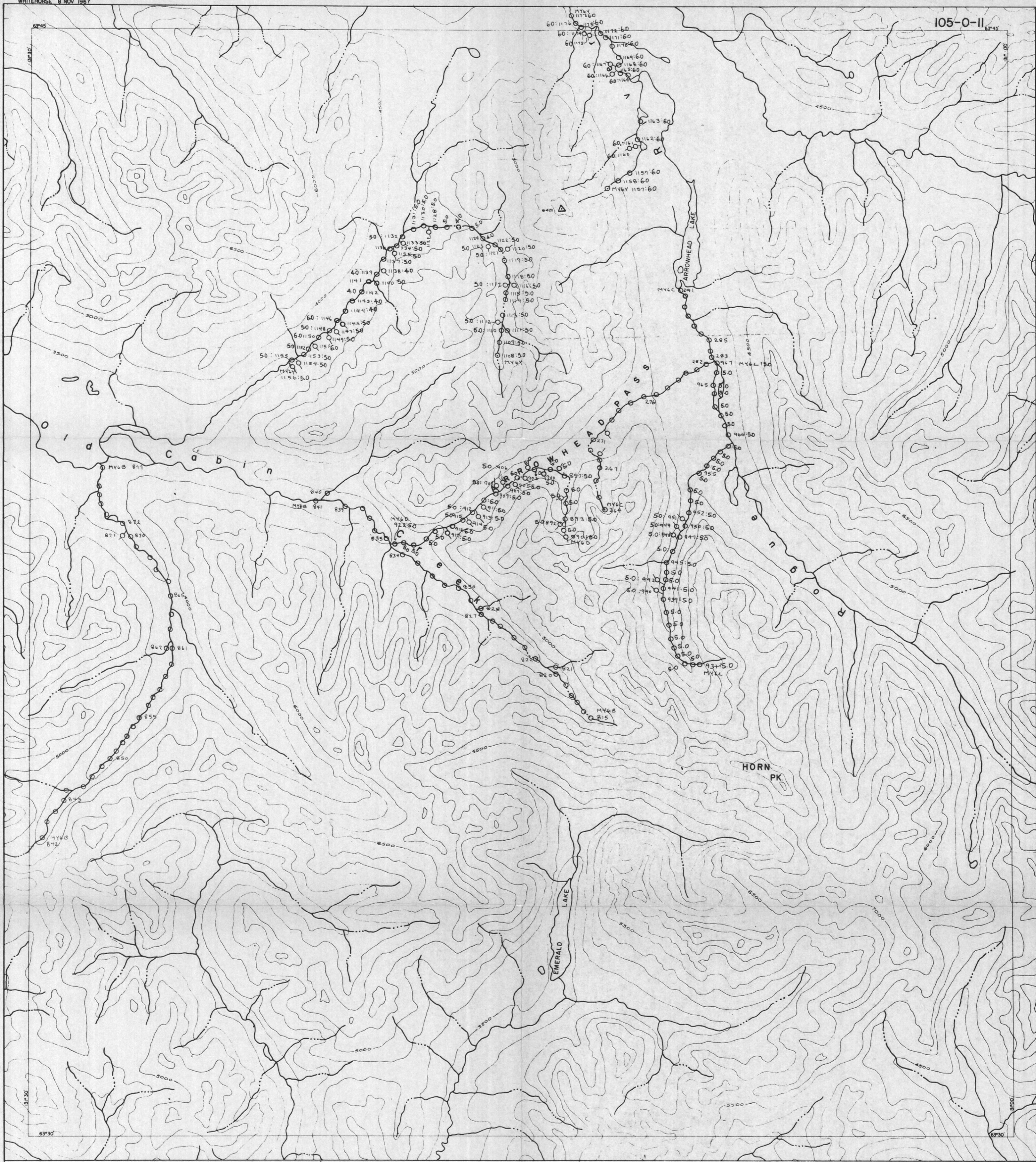
ANALYSIS IN PPM  
27, 45, 76, 30  
Cu, Pb, Zn, Ba



105-0-11

SCALE: 1 IN = 1 MI



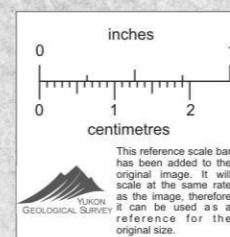


### GEOCHEMICAL SAMPLE STATIONS

- SILT
- SOIL
- × ROCK

### LEGEND

- M MACMILLAN PROJECT
- Y OEX
- 6 1976
- Q SAMPLER
- (6.0) pH



SCALE: 1 IN = 1 MI

105-0-11

CYPRUS ANVIL MINING CORPORATION

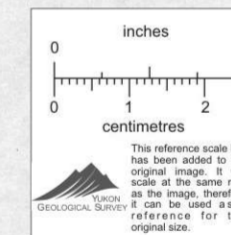
# MACMILLAN PROJECT

105-0-11  
DETAIL AREA

GEOCHEMICAL VALUES:

Cu, Pb, Zn (ppm)

SCALE: 1 inch = 1/2 mile



GEOCHEMICAL MAP  
N.T.S. 105 0 12  
1" = 1 mile

Q19-  
001

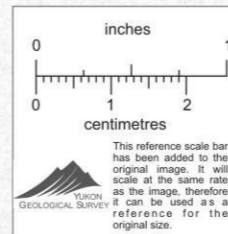


### GEOCHEMICAL RESULTS

- SILT
- SOIL
- × ROCK

### LEGEND

ANALYSIS IN PPM  
27, 45, 76, 30  
Cu, Pb, Zn, Ba



105-0-12

SCALE 1 IN = 1 MI

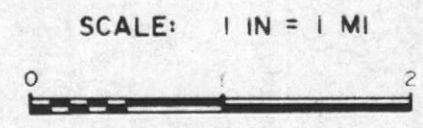
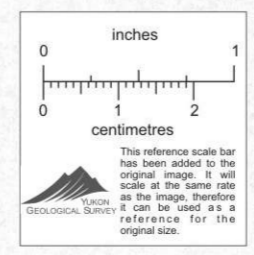


### GEOCHEMICAL SAMPLE STATIONS

- SILT
- SOIL
- ROCK

### LEGEND

- M · MACMILLAN PROJECT
- Y · OEX
- 6 · 1976
- Q · SAMPLER
- (6.0) · pH



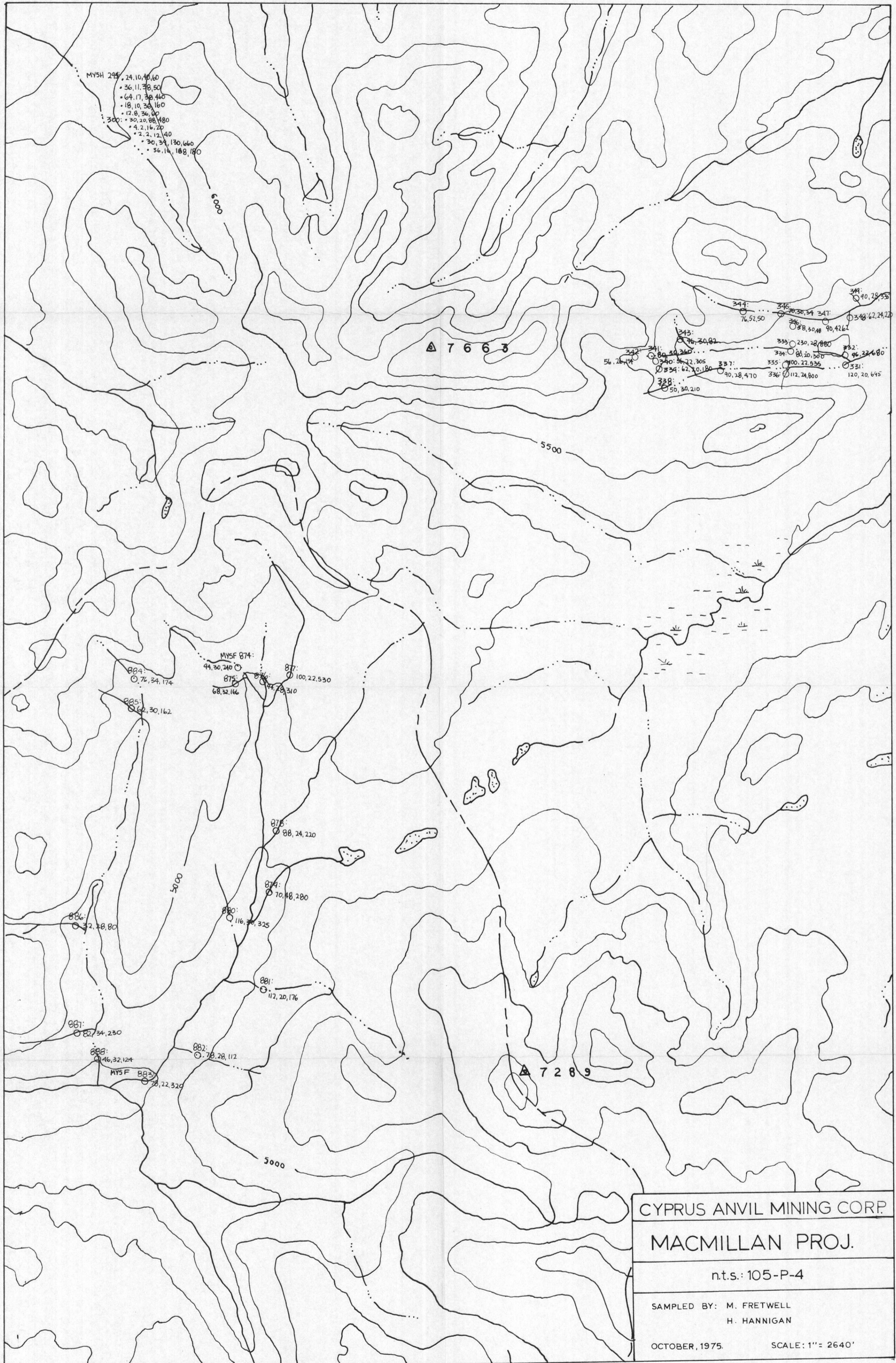
105-0-12



GEOCHEMICAL MAP  
N.T.S. 105 P 4  
1" - 1 mile

GEOCHEMICAL MAP  
N.T.S. 105 P 4  
1" =  $\frac{1}{2}$  mile

022 -  
024



MYSH 245  
 • 24, 10, 40, 60  
 • 36, 11, 38, 50  
 • 64, 17, 38, 460  
 • 18, 10, 38, 160  
 • 12, 8, 36, 40  
 300: • 30, 20, 88, 480  
 • 4, 2, 16, 20  
 • 2, 2, 12, 40  
 • 30, 34, 130, 660  
 • 36, 16, 188, 180

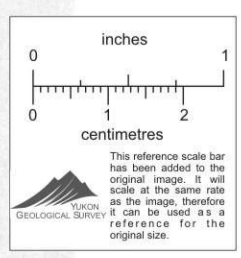
344: 40, 28, 55  
 345: 76, 51, 50  
 346: 76, 30, 82  
 347: 90, 42, 61  
 348: 62, 24, 22  
 349: 56, 21, 154  
 350: 80, 30, 240  
 351: 76, 30, 82  
 352: 96, 22, 680  
 353: 230, 20, 880  
 354: 56, 22, 305  
 355: 100, 22, 935  
 356: 112, 24, 800  
 357: 90, 28, 470  
 358: 50, 30, 210  
 359: 62, 20, 180  
 360: 120, 20, 645

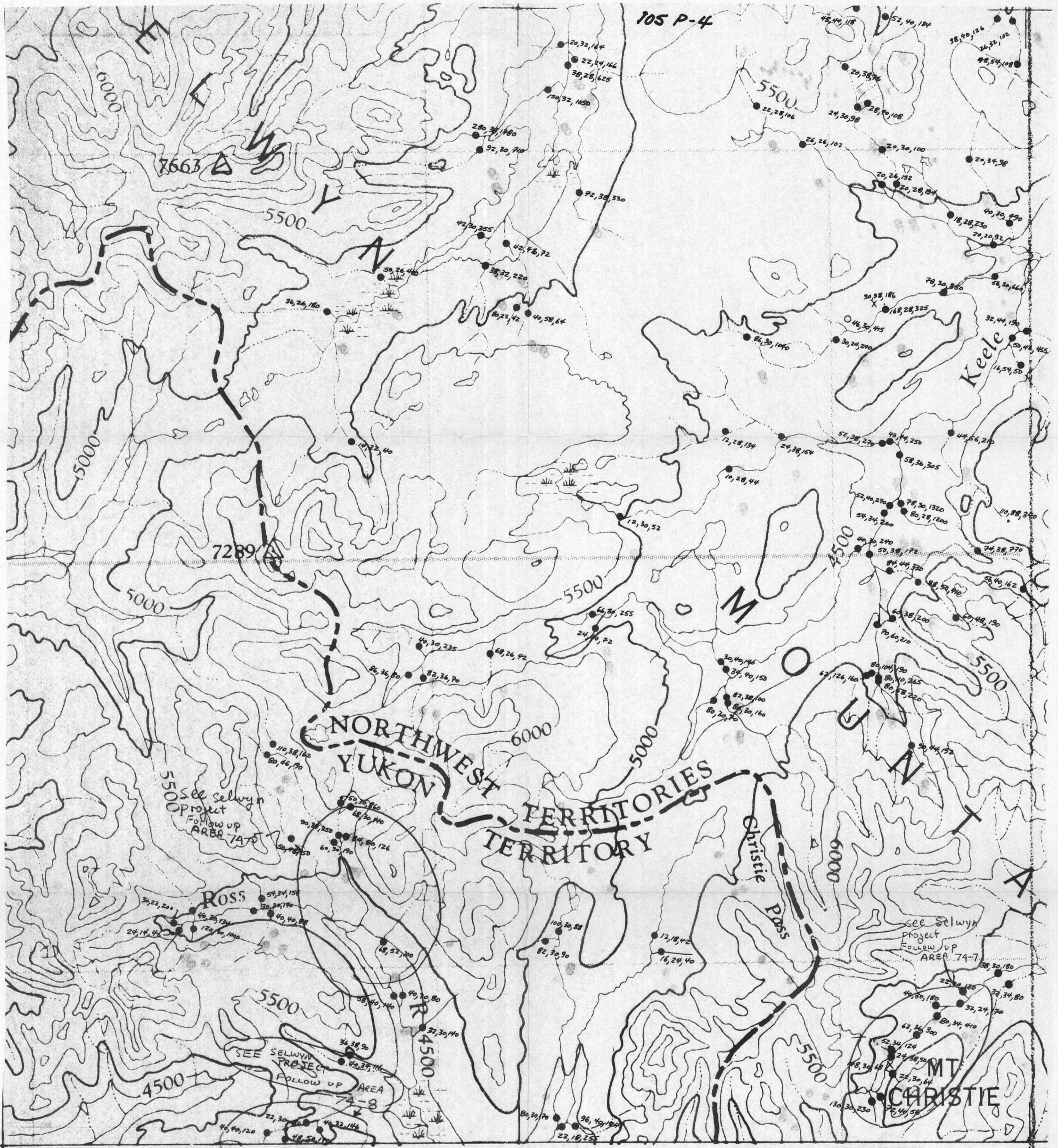
MYSF 874:  
 874: 44, 30, 240  
 875: 68, 32, 166  
 876: 94, 28, 310  
 877: 100, 22, 530

878: 88, 24, 220  
 879: 70, 18, 200  
 880: 116, 30, 325  
 881: 117, 20, 176  
 882: 78, 28, 112  
 883: 78, 22, 320  
 884: 72, 34, 174  
 885: 64, 30, 162  
 886: 32, 48, 80  
 887: 82, 34, 230  
 888: 46, 32, 124

CYPRUS ANVIL MINING CORP.  
 MACMILLAN PROJ.  
 n.t.s.: 105-P-4  
 SAMPLED BY: M. FRETWELL  
 H. HANNIGAN  
 OCTOBER, 1975. SCALE: 1" = 2640'

63°00'  
 30°00'





**GEOCHEM SAMPLES**

x rock                      ● silt  
 . soil                        ○ other  
 analysis in ppm: 75, 34, 453  
                                   Cu, Pb, Zn

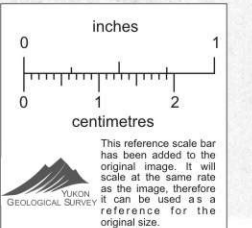
**LEGEND**

S3Y125 : sample name  
 (7.5) pH  
 C=Cu, P=Pb, Z=Zn : metal characteristic  
 12 : integrated value

**105 P4**

Scale: 1 in. = 1 mi.

0 1 2 mi.



# MACMILLAN PROJECT



NOTE: CHOPPER HOPPING RESULTS FOR THESE DRAINAGES ARE ON 1/2 MI. MAP

## GEOCHEM SAMPLES

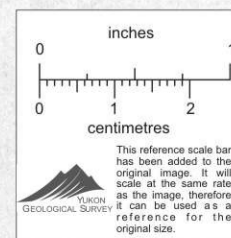
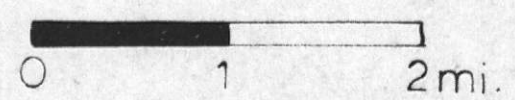
- x rock
- o silt
- . soil
- analysis in ppm : 27, 19, 365, 210
- Cu, Pb, Zn, Ba

## LEGEND

MY5Q: sample name

## 105-P-4

Scale: 1 in. = 1 mi.



GEOCHEMICAL MAP  
N.T.S. 105 P 5  
1" = 1 mile

GEOCHEMICAL MAP  
N.T.S. 105 P 5  
1" = ½ mile

005 -  
027





**GEOCHEM SAMPLES**

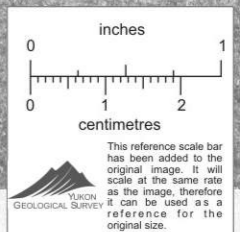
x rock  
 • soil  
 analysis in ppm: 75, 34, 453  
 Cu, Pb, Zn

● silt  
 ○ other

**LEGEND**

S3Y125 sample name  
 (7.5) pH  
 C=Cu, P=Pb, Z=Zn metal characteristic  
 12 integrated value

Scale: 1 in. = 1 mi.



This reference scale bar has been added to the original image. It will scale as the image size as the image, therefore it can be used as a reference for the original size.

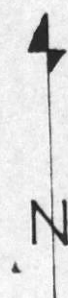


**GEOCHEM SAMPLES**

- x rock
- o silt
- . soil
- analysis in ppm : 27, 19, 365, 210
- Cu, Pb, Zn, Ba

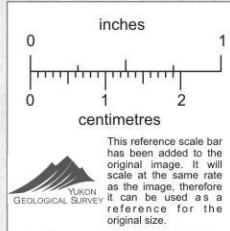
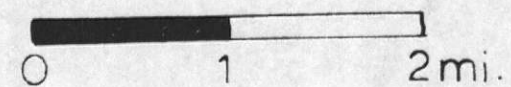
**LEGEND**

MY5Q: sample name



**105-P-5**

Scale: 1 in. = 1 mi.



GEOCHEMICAL MAP  
N.T.S. 106 C 3  
1" = 1 mile

028 -  
029



GEOCHEMICAL RESULTS

- SILT
- SOIL
- × ROCK

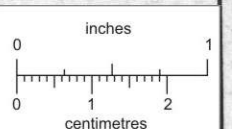
LEGEND

ANALYSIS IN PPM  
 27, 45, 76, 30  
 Cu, Pb, Zn, Ba



106-C-3

SCALE: 1 IN = 1 MI



This reference scale bar has been added to the original image. It will scale at the same rate as the image. Therefore, it can be used as a reference for the original size.

