

File - TAC PROJECT
geology.

013647

A Preliminary Report on
the TAC Claim Group.
Sheldon Lake Area, Yukon.

Sheldon Lake Map Sheet 105-J-3

October 20, 1970.

General

The TAC Group of 16 claims were located on August 10, 1970.

The claims lie on the northern flank of an unnamed intrusive, identified by a spot height of 5563 ft.

The intrusive is some 22 miles east of the Canol Road and Marjorie Lake.

Access is by helicopter, usually from Ross River.

Geology and Mineralization

The claims cover a pluton comprising pale cream to grey medium grained biotite granodiorite. There is widespread but weak chloritic alteration.

There are occasional feldspar porphyry dykes cutting the intrusive. To the north of the claim block the intrusive is in contact with a rusty quartz sericite schist. This latter is frequently intersected by quartz veins and veinlets.

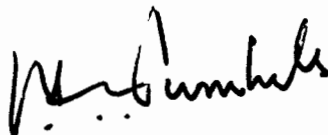
Float was located in which fairly coarse molybdenite occurs both disseminated in the granodiorite and associated with small quartz veins cutting the intrusive.

No mineralization was located in place, but shortage of time prevented prospecting from being completed.

Silt sampling in the vicinity gave generally negative response. One anomalous copper silt sample was obtained in this area earlier in the year, but remains unconfirmed.

Detailed geochemical maps will be available at a later date.

Respectfully submitted,

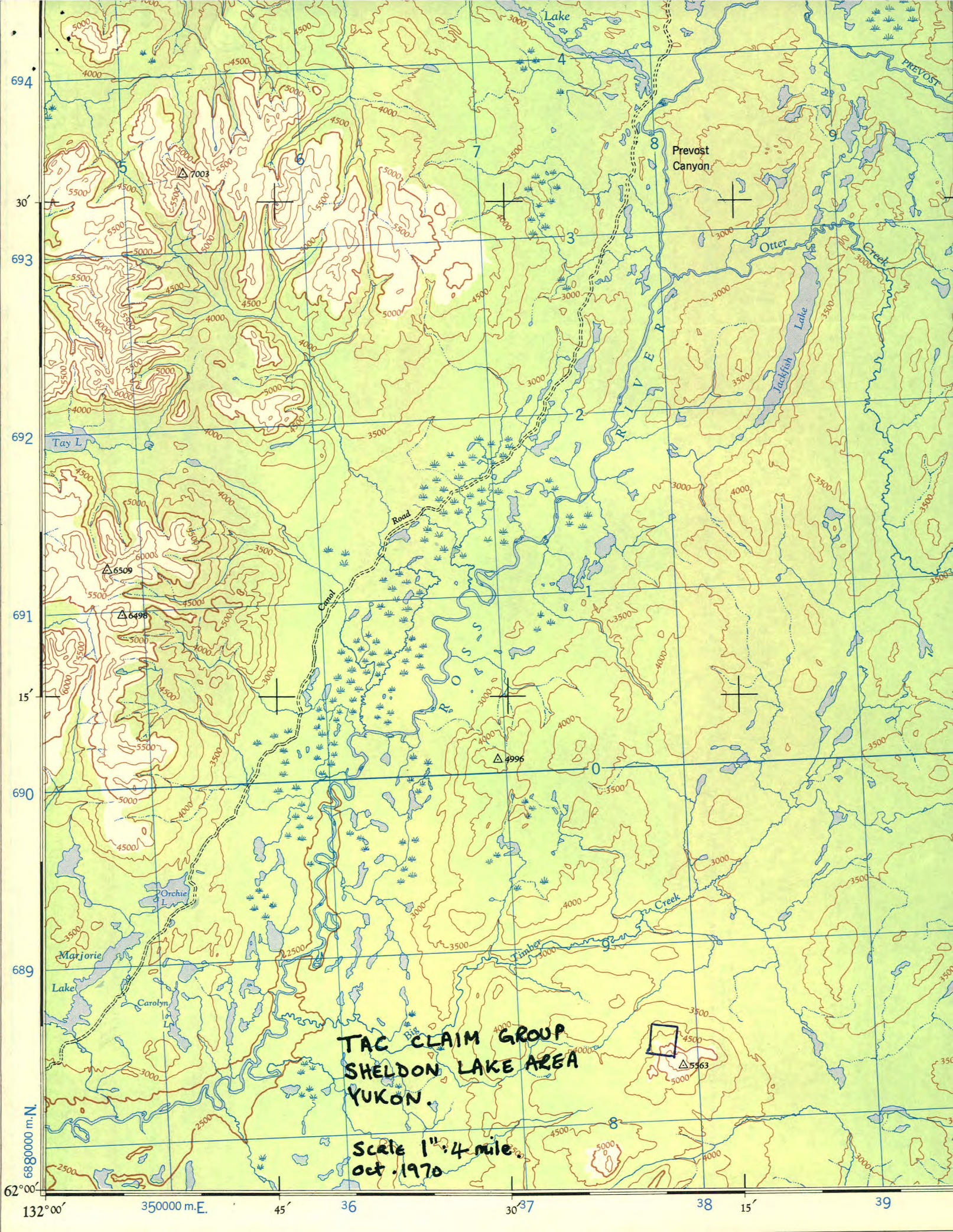
A handwritten signature in black ink, appearing to read "Ian Turnbull". The signature is written in a cursive style with a large initial "I" and "T".

Ian Turnbull.

IT:jmh

Attached: Claim Plan

Location of claims - Sheldon Lake Map Sheet 105-J-3.



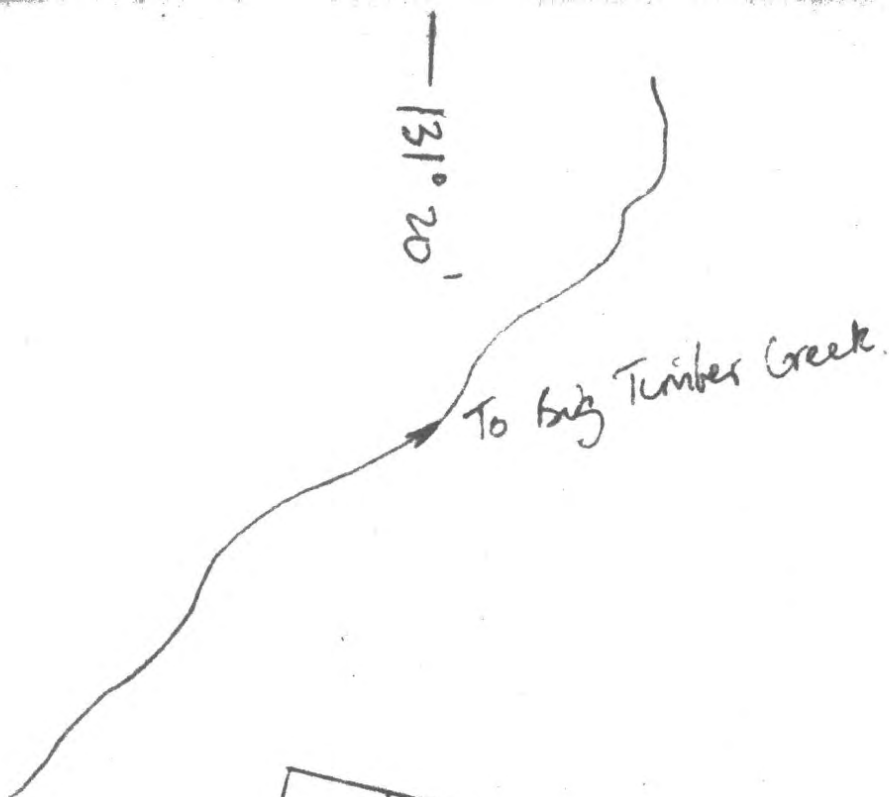
TAC CLAIM GROUP
SHELDON LAKE AREA
YUKON.

Scale 1" = 4 miles.
Oct. 1970

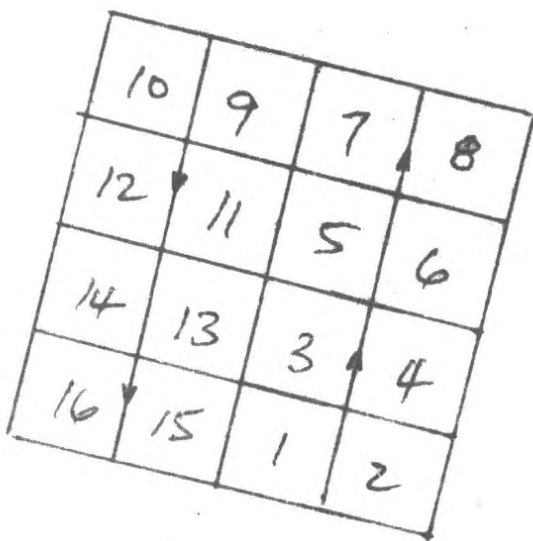


694
30'
693
692
691
15'
690
689
6880000 m.N.
62°00'

132°00' 350000 m.E. 45' 36 30' 37 38 15' 39



62° 05'



TAC CLAIM GROUP
 SHELDON LAKE AREA
 WATSON LAKE MINING DISTRICT

A
 5563'

SCALE 2" : 1 MILE
 OCT. 1970