

013651

ROSS RIVER RECONNAISSANCE PROGRAM

ANVIL PLUTON AREA

October, 1970.

Ian Turnbull.

## Introduction

During the period 11th-14th August 1970, a part of the northern contact area between the Anvil Batholith - Unit 11 - and the intruded Unit 7 rocks was examined and the stream silts sampled.

Access into the area is by helicopter, generally from Anvil airstrip, some twenty miles to the west.

## Geology

The Unit 11 batholith is an equigranular medium grained biotite-hornblende granodiorite. At the contact the intrusive is weakly gneissic and carries inclusions of partially digested mica schist. There is weak alteration confined to the marginal area of the intrusive, where the rocks are bleached looking and epidote has developed along fractures.

The intruded Unit 7 rocks locally comprise quartz sericite schist, phyllite, argillite and hornfels. Throughout the unit there are extensive networks of quartz veins and veinlets. The rocks are commonly rusty.

No mineralization was noted.

## Geochemical Sampling

Thirty-four silt samples were collected from the area. These were run for totals Cu, Pb, Zn and Mn; and partial Cu and Pb. Results are reported on accompanying plans.

Three adjacent samples from the northwest creek show high to anomalous metal values.

Conclusions and Recommendations

1. A favourable geological environment exists, comprising the Anvil Batholith in contact with the Unit 7 rocks, which are host to the Anvil lead-zinc deposits.
  
2. Somewhat anomalous copper, lead and zinc values were obtained from one creek draining the area. These are more than simply a reflection of the different geological units and warrant further attention.

Those streams draining to the west of the anomalous area should be sampled.

In addition prospecting of the anomalous area should be completed.

Respectfully submitted,



IT:jmh

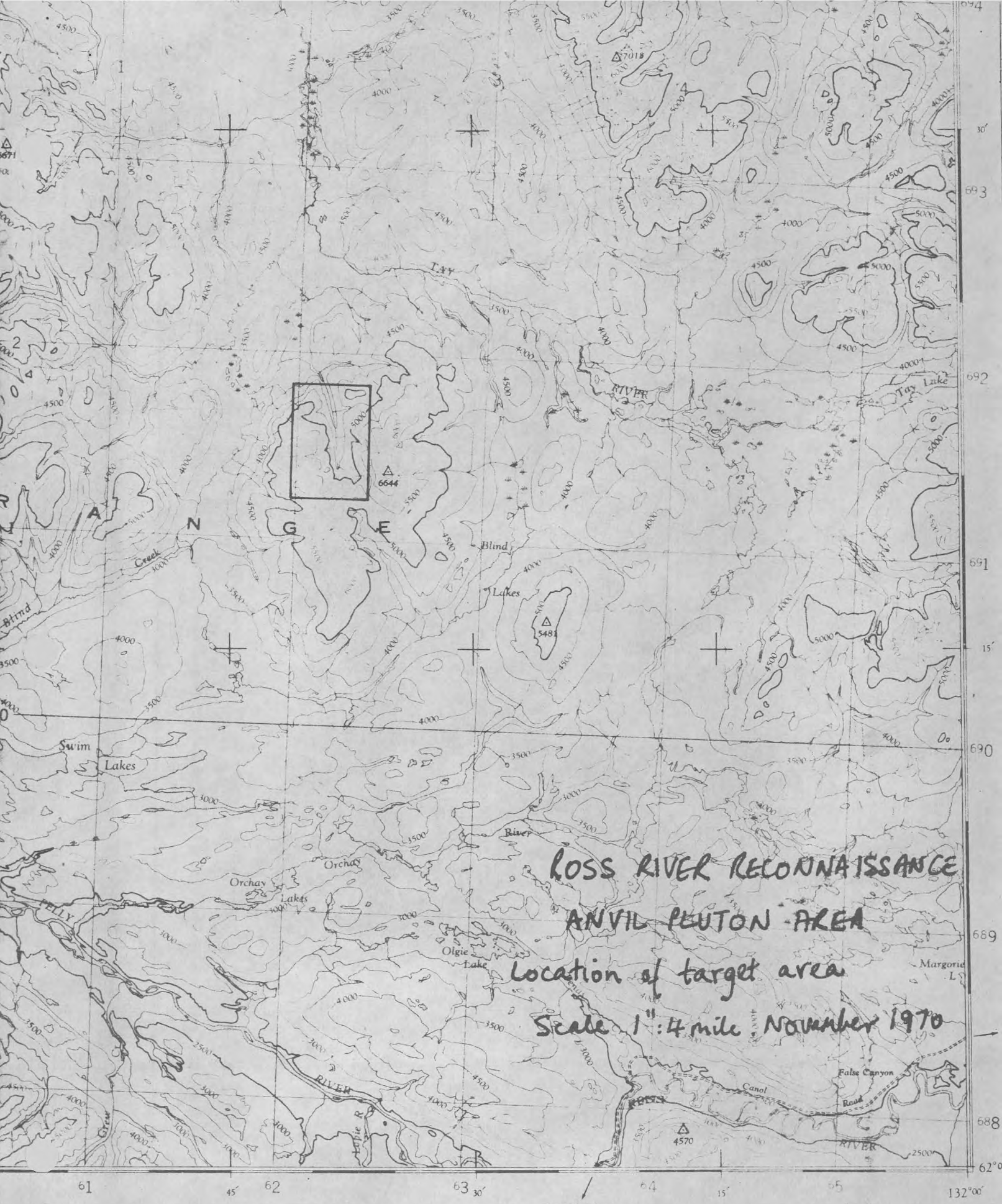
Ian Turnbull.

Reference:

Ross River Reconnaissance Program, Project 70003  
12th May 1970 and  
30th June 1970  
by D. C. Findlay.

Attached Plans:

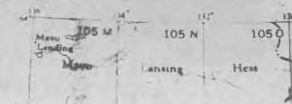
Location of Target Area  
Geology  
Drainage Geochem: Total Cu  
Total Pb  
Total Zn, Mn.  
Partial Cu  
Partial Pb.



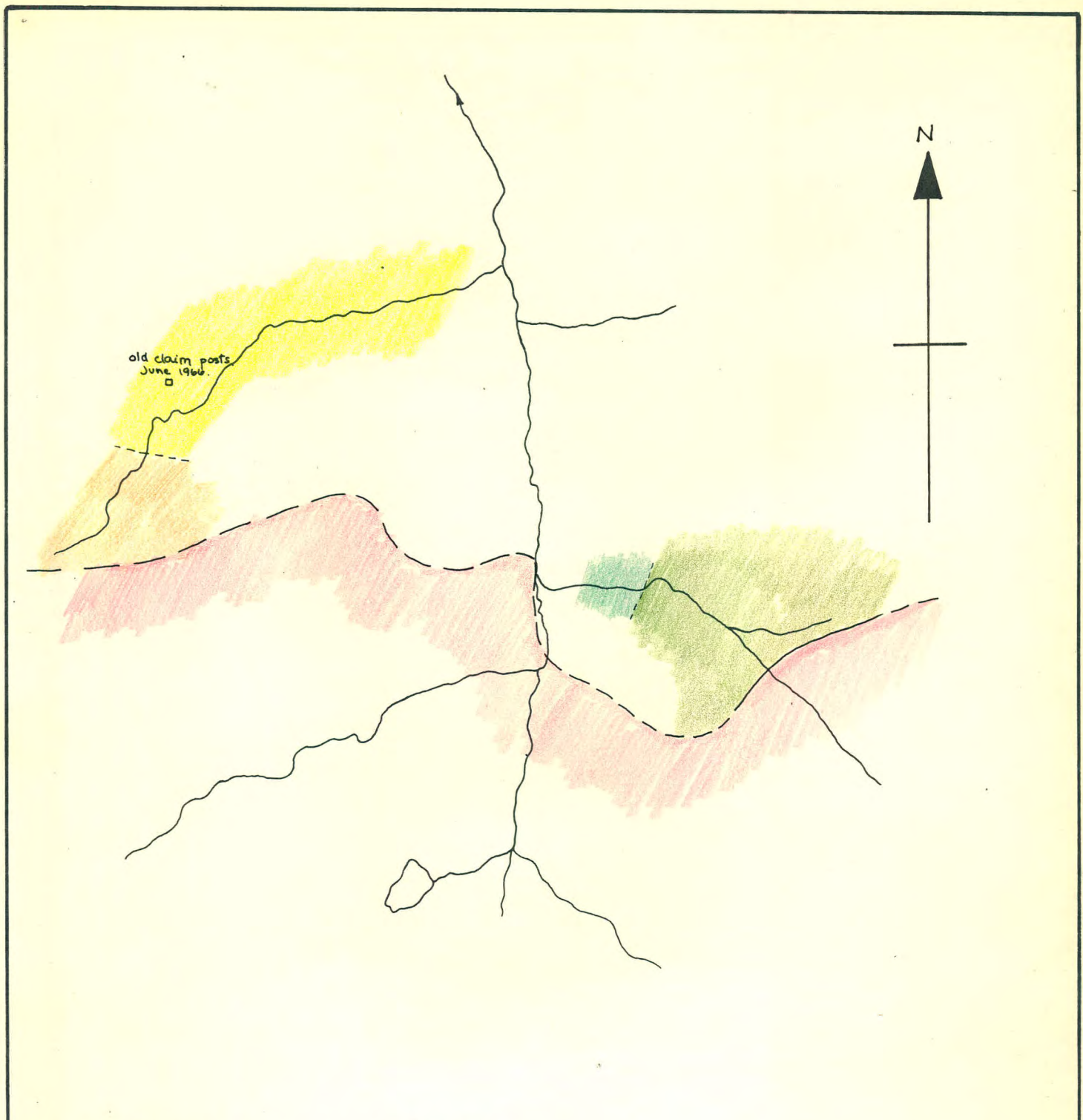
ROSS RIVER RECONNAISSANCE  
 ANVIL PLUTON AREA  
 Location of target area  
 Scale 1"=4 mile November 1970



Ross River 1m.  
 Contour interval 500 Feet  
 All Elevations in Feet above Mean Sea Level.  
 Universal Transverse Mercator Projection



DEPENDENCE



old claim posts  
June 1966.  
□



Unit II. Medium grained quartz monzonite and granodiorite

- Unit 7
- quartz sericite schist
  - phyllite, numerous qtz. veins.
  - orange-brown stained argillite → shale
  - hornfels and qtz. veins.

Airphotos A 12371-408  
A 12850-142

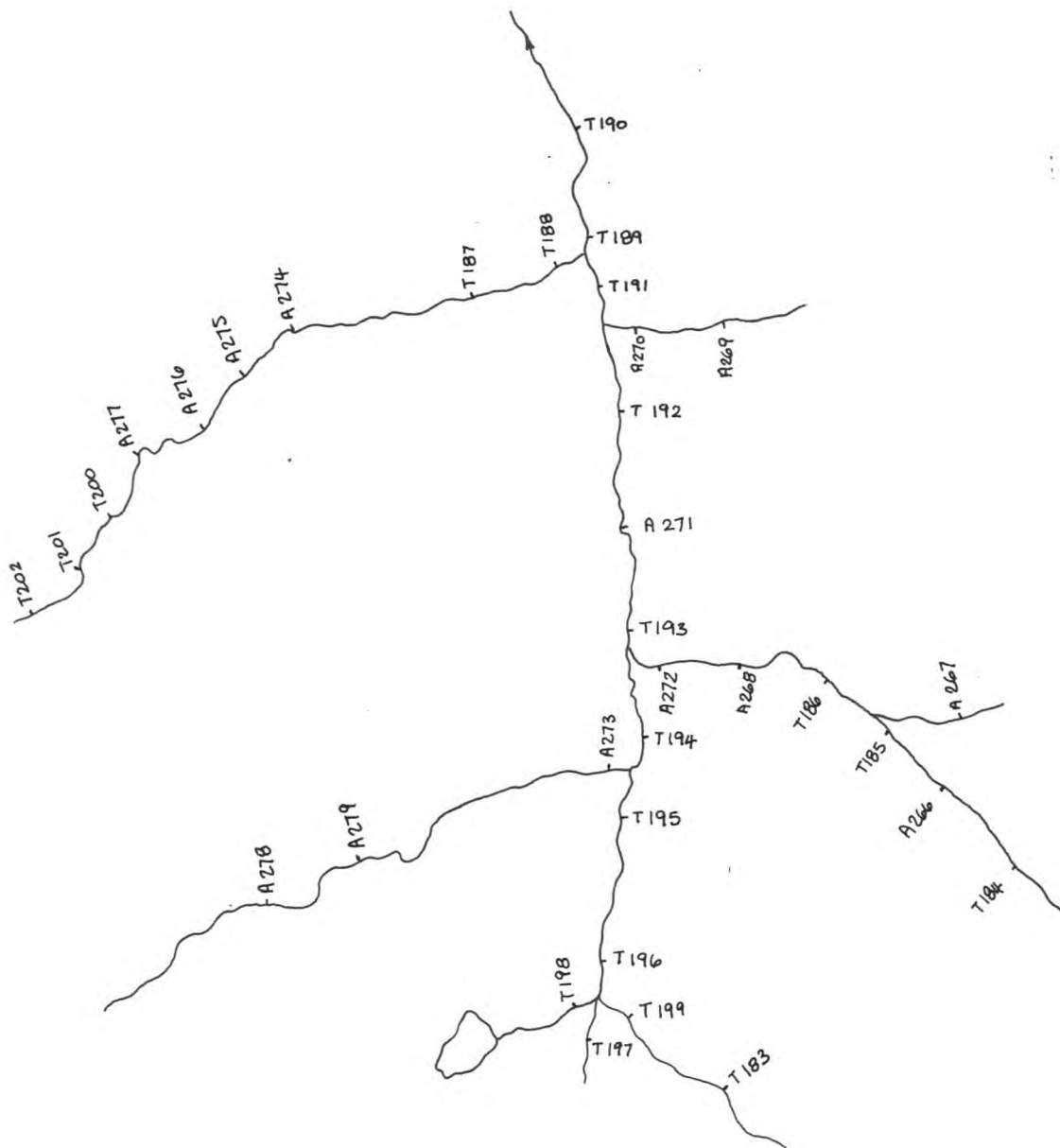
CYPRUS EXPLORATION CORPORATION LTD.

ROSS RIVER RECONNAISSANCE  
ANVIL PLUTON AREA

GEOLOGY.

SCALE 2 INCH: 1 MILE

NOVEMBER 1970



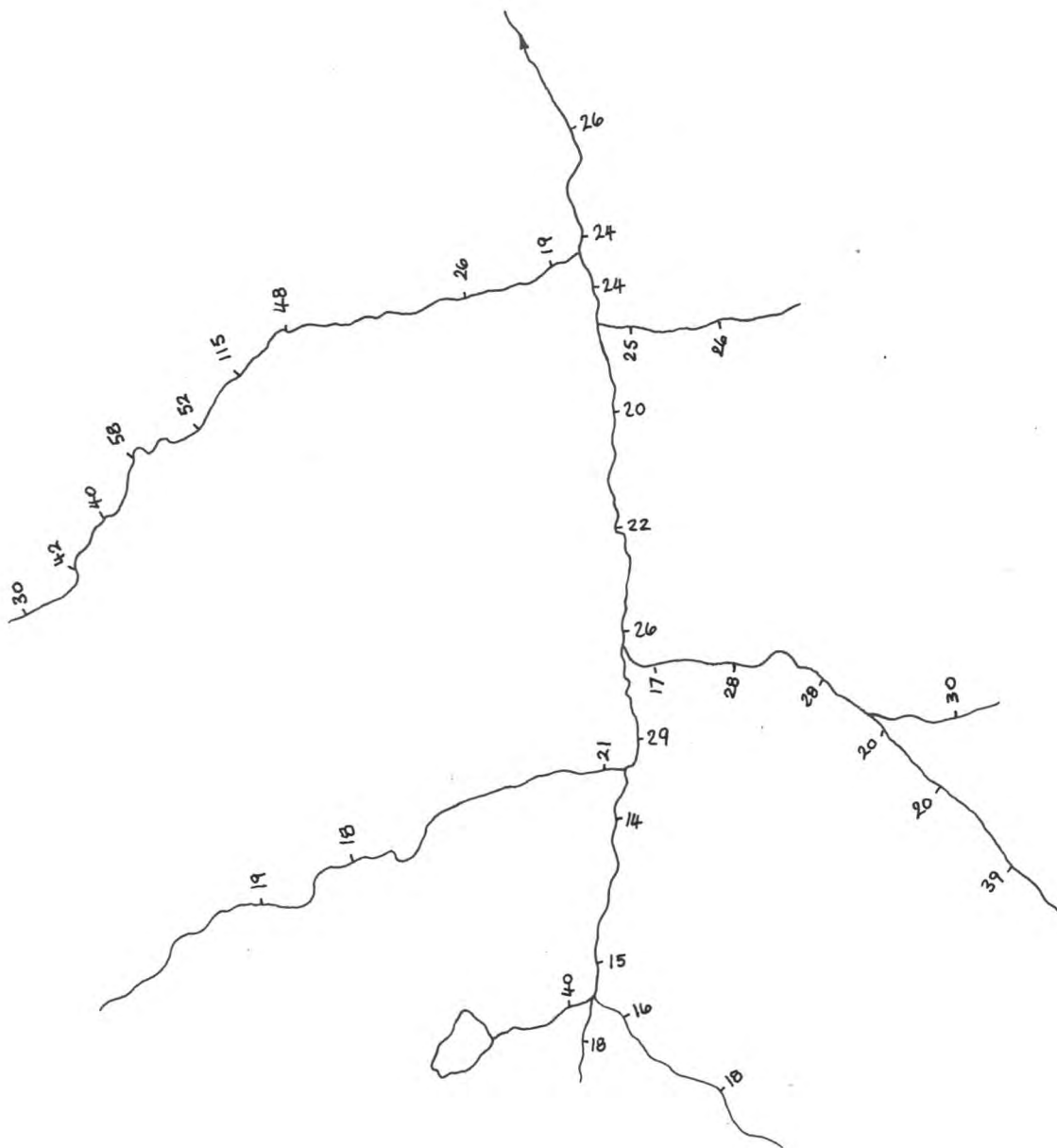
CYPRUS EXPLORATION CORPORATION LTD.

ROSS RIVER RECONNAISSANCE  
ANVIL PLUTON AREA

SILT SAMPLE LOCATION PLAN

SCALE 2 INCH: 1 MILE

NOVEMBER 1970



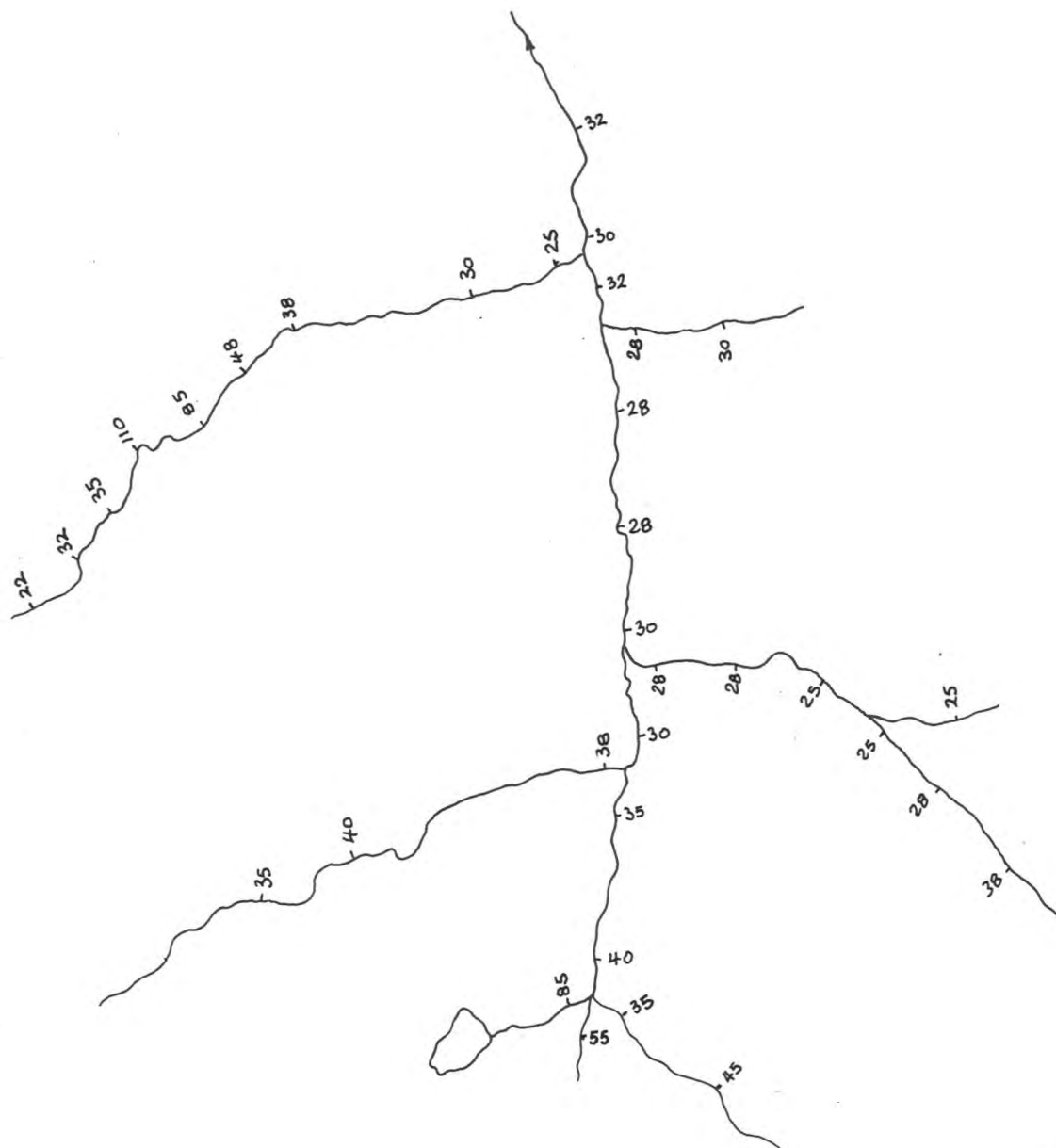
CYPRUS EXPLORATION CORPORATION LTD.

ROSS RIVER RECONNAISSANCE  
ANVIL PLUTON AREA

DRAINAGE GEOCHEM.  
Total Cu.

SCALE 2 INCH: 1 MILE

NOVEMBER 1970



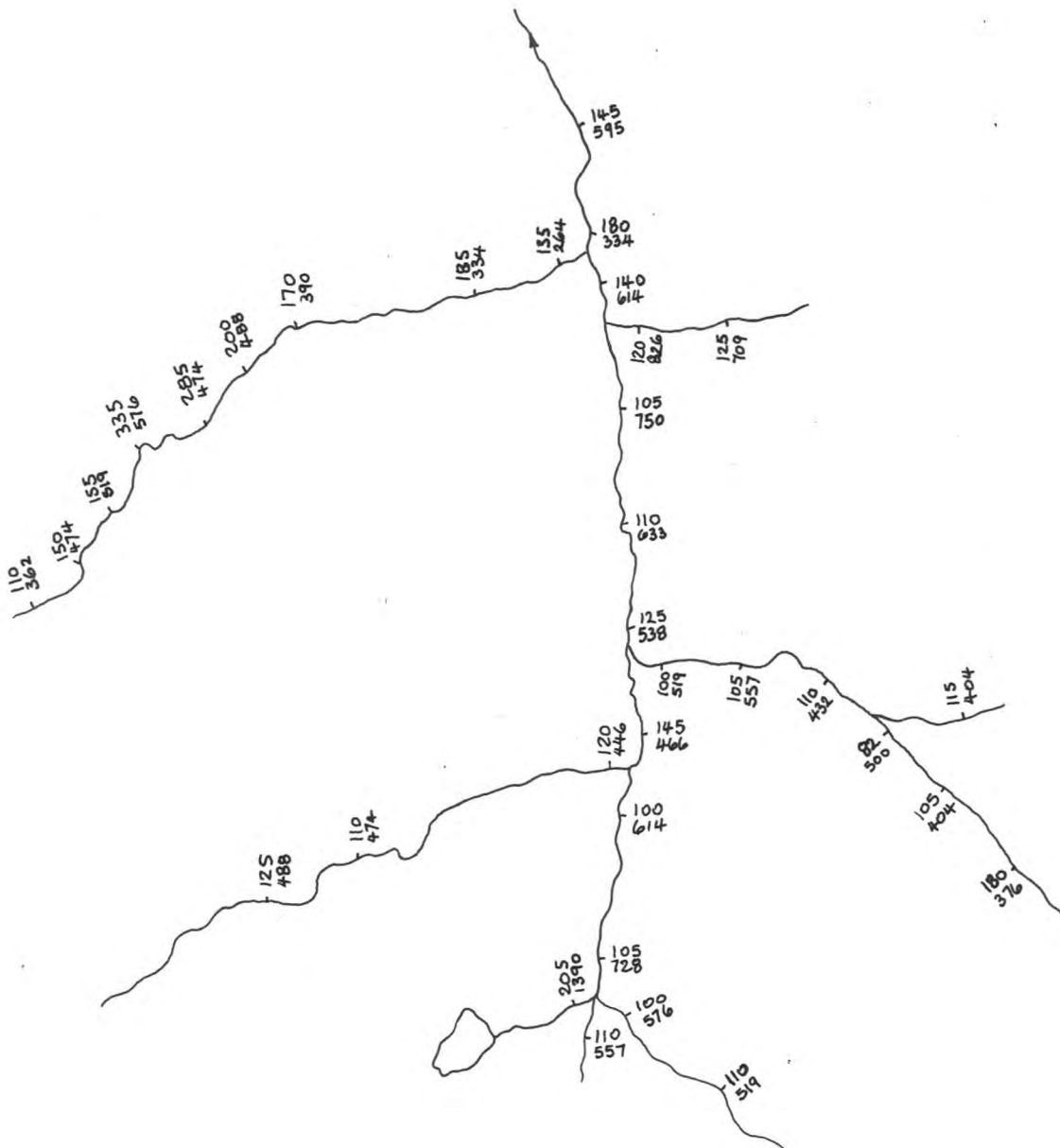
CYPRUS EXPLORATION CORPORATION LTD.

ROSS RIVER RECONNAISSANCE  
ANVIL PLUTON AREA

DRAINAGE GEOCHEM.  
Total Pb.

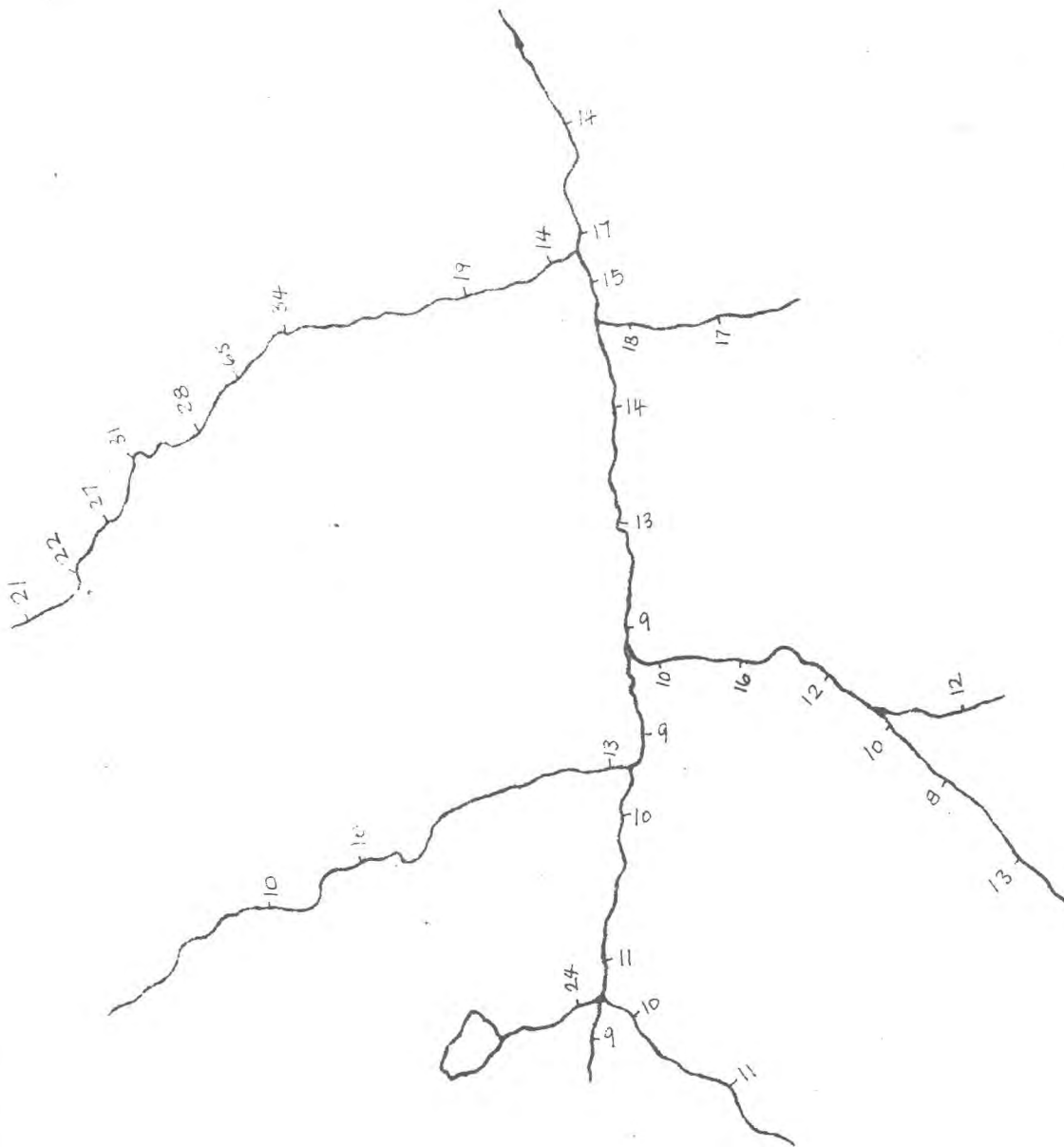
SCALE 2 INCH: 1 MILE

NOVEMBER 1970

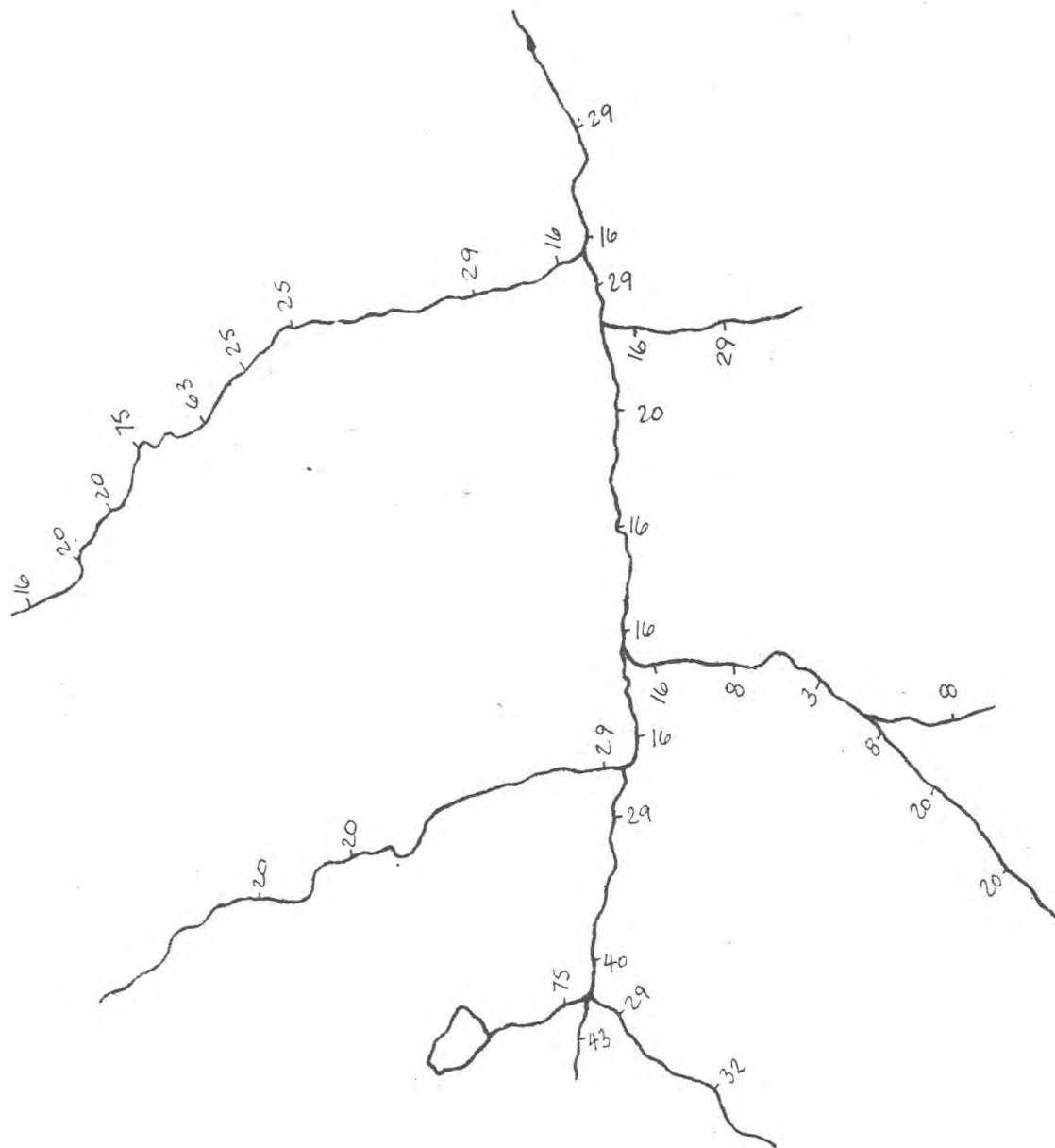


Zn. ppm.  
Mn. ppm.

CYPRUS EXPLORATION CORPORATION LTD.	
ROSS RIVER RECONNAISSANCE ANVIL PLUTON AREA	
DRAINAGE GEOCHEM. Totals Zn., Mn.	
SCALE 2 INCH = 1 MILE	NOVEMBER 1970



CYPRUS EXPLORATION CORPORATION LTD.	
ROSS RIVER RECONNAISSANCE ANVIL PLUTON AREA	
DRAINAGE GEOCHEM. Partial (HCl) Cu.	
SCALE 2 INCHES 1 MILE	NOVEMBER 1970



CYPRUS EXPLORATION CORPORATION LTD.

ROSS RIVER RECONNAISSANCE  
ANVIL PLUTON AREA

DRAINAGE GEOCHEM.  
PARTIAL (HCL) Pb.

SCALE 2 INCHES = 1 MILE

NOVEMBER 1970