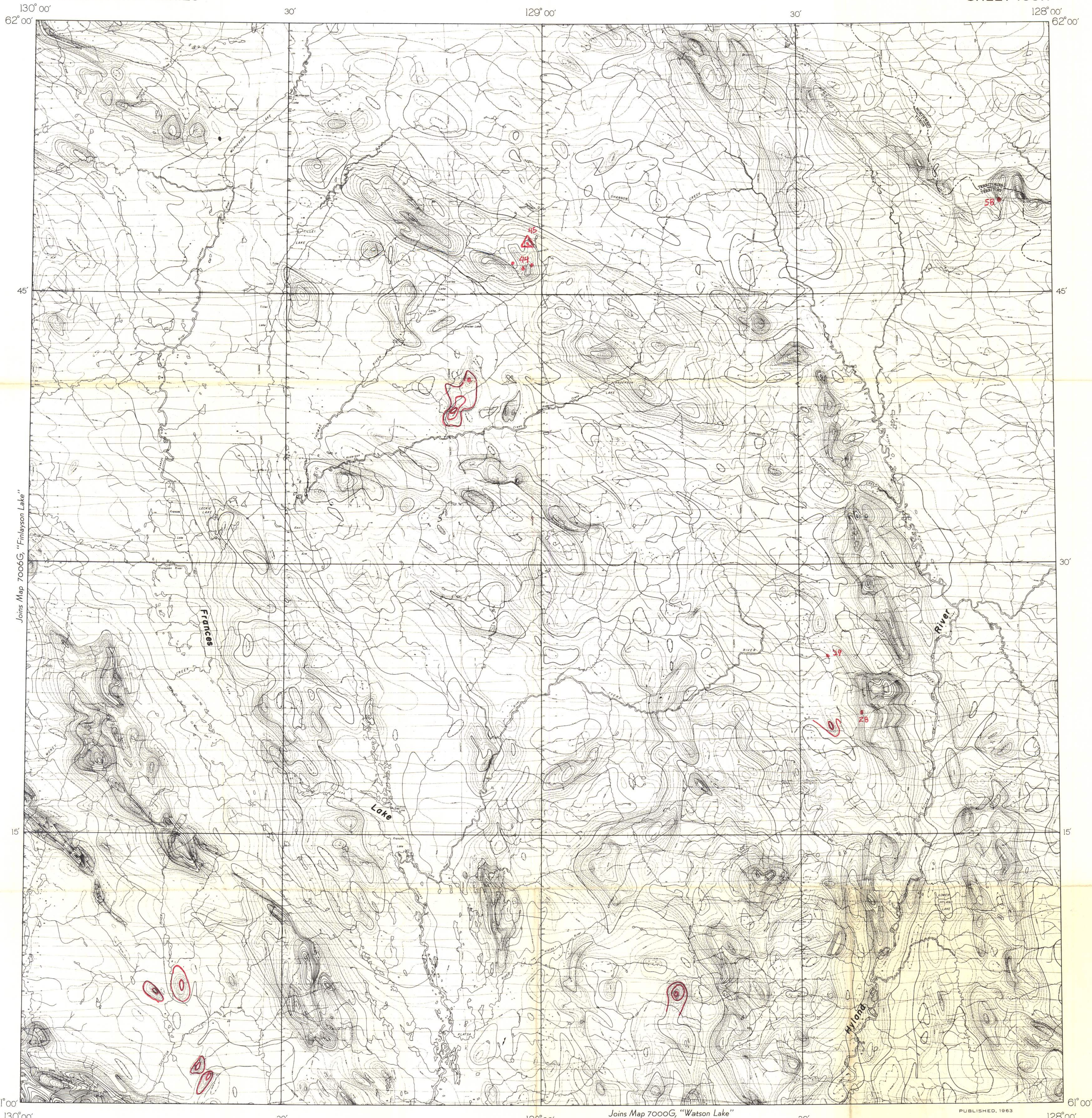




GEOLOGICAL SURVEY OF CANADA  
DEPARTMENT OF MINES AND TECHNICAL SURVEYS

AEROMAGNETIC SERIES

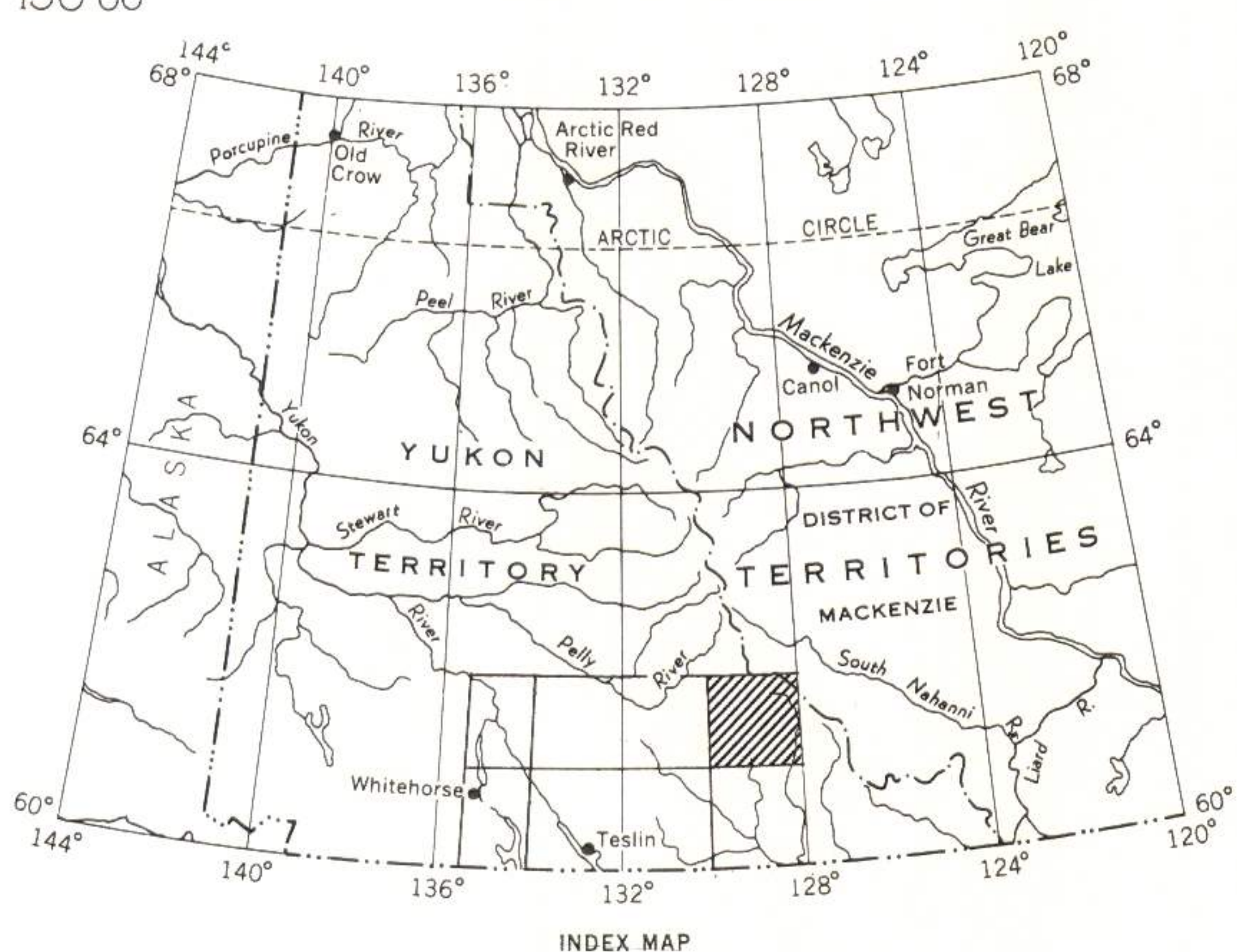
SHEET 105H



Joins Map 7006G, "Finlayson Lake"

Joins Map 7000G, "Watson Lake"

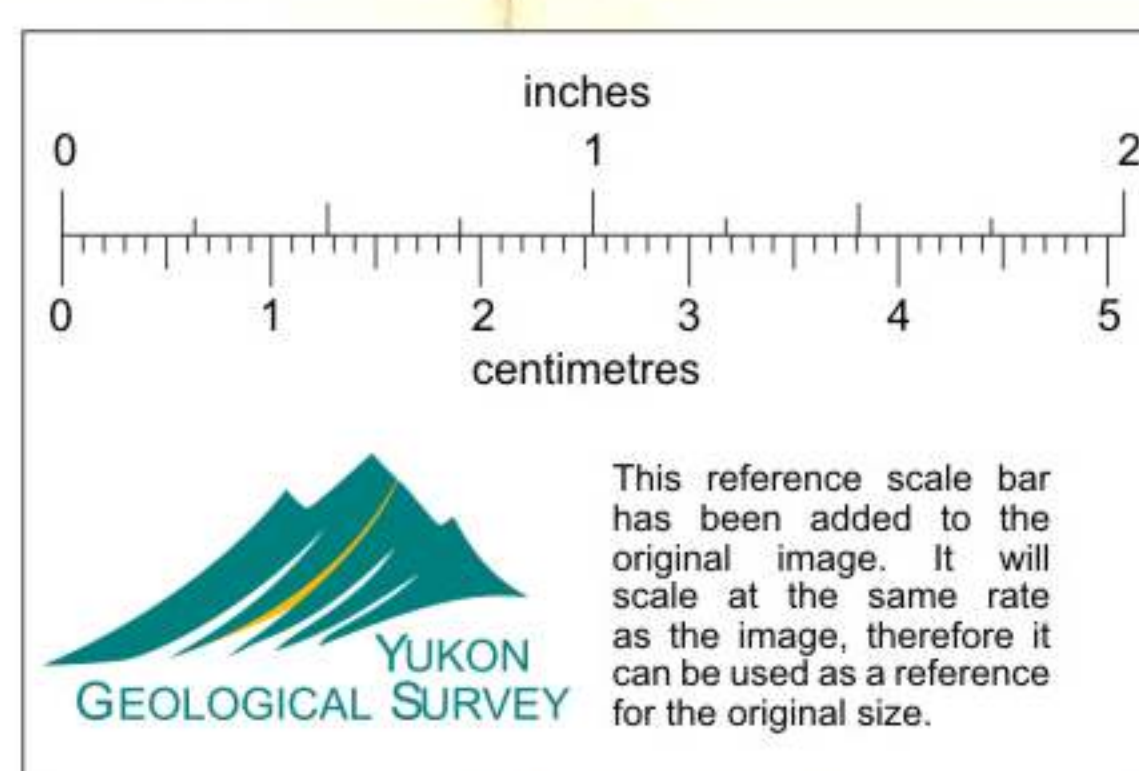
PUBLISHED, 1963



MAP 7007G

# FRANCES LAKE YUKON TERRITORY

Scale: One Inch to Four Miles =  $\frac{1}{253,440}$   
Miles



Airborne magnetic survey, June to September, 1961, by Aero Surveys Ltd. Vancouver; four mile map compiled from one inch to one mile geophysical maps published by the Department of Mines and Technical Surveys.

No correction has been made for regional variation

GEOPHYSICS PAPER 7007G  
FRANCES LAKE  
YUKON TERRITORY  
SHEET 105H

013670