

SW Corner of Francis Lake Sheet.

013705

105 H 4

105-H-4

PHOTO #

9 PD - 38 -	ROCK CHIP SAMPLE			A12189-435
39 -	SOIL -	rust-stained		A12245-288
40 -	2	$\frac{1}{2}$	SILT	"
41 -	3	$\frac{1}{2}$	SILT	"
42 -	3	1	SILT	"
43 -	3	1	SILT	"
44 -	ROCK CHIP SAMPLE			A12189-435
45 -	SOIL -	RUST STAINED		"
46 -	40	- 2		A12189-434
47 -	25	4		"
48 -	30	3		"
49 -	2	$\frac{1}{2}$		"

105114

No NOTES
But see overlay
for photo
A12189-429

bedding
155/40 SW

pure 1st & irregular
white chert lenses & bands
to 411 thick No fos. noted

44
41
see side 42

1st 1/2

~~10501~~

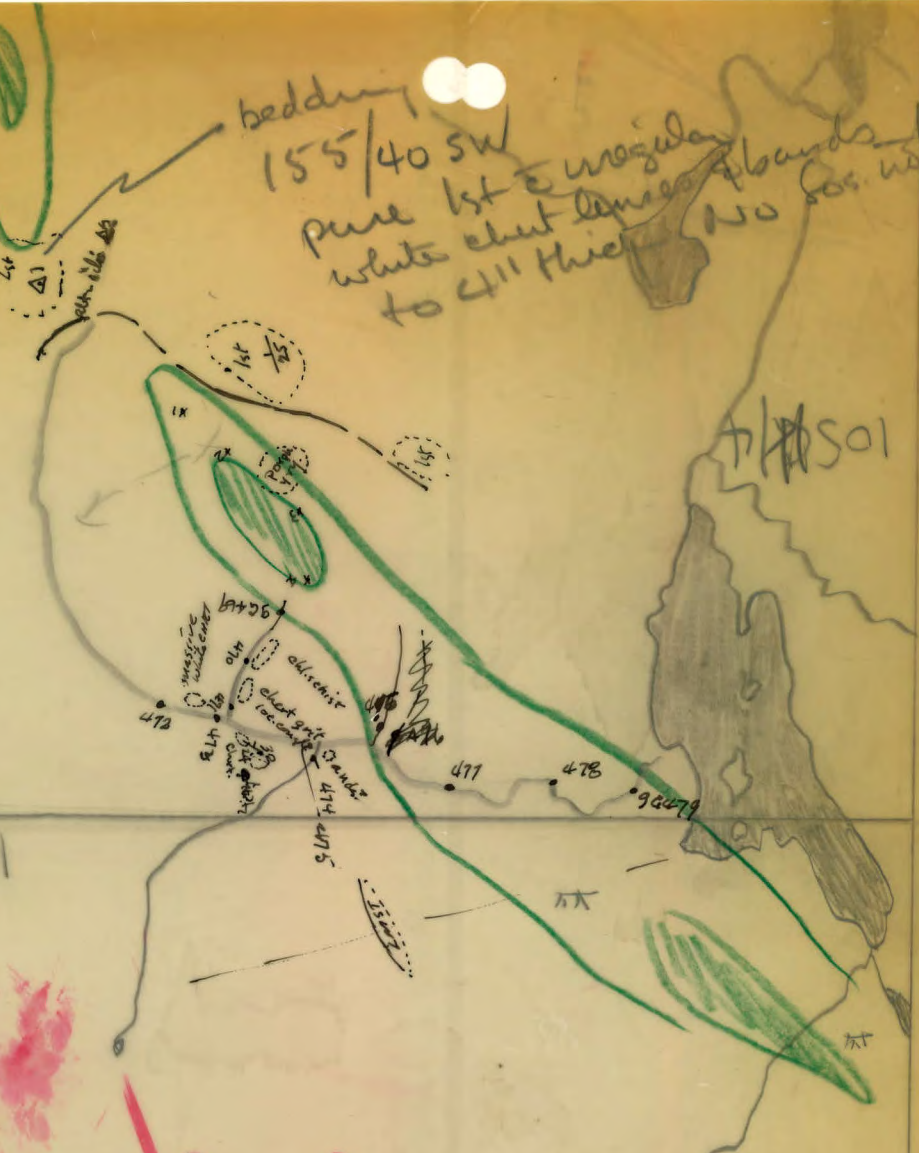
massive
chert
472
473
474
475
476
477
478
93479

~~10501~~

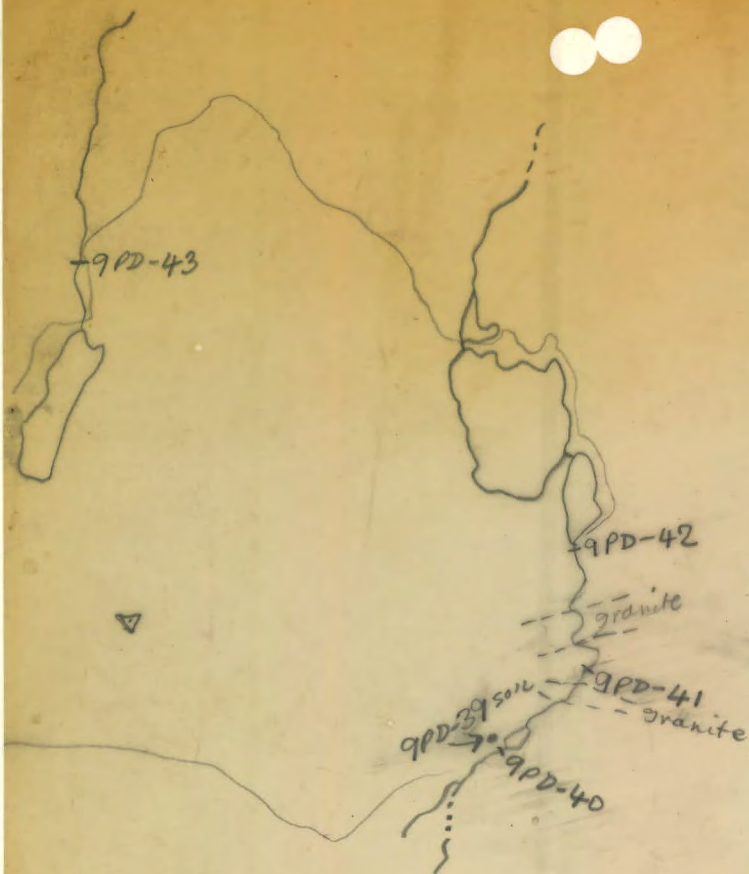
Plot 4

Plotted by

96
GOTWIN



105H4

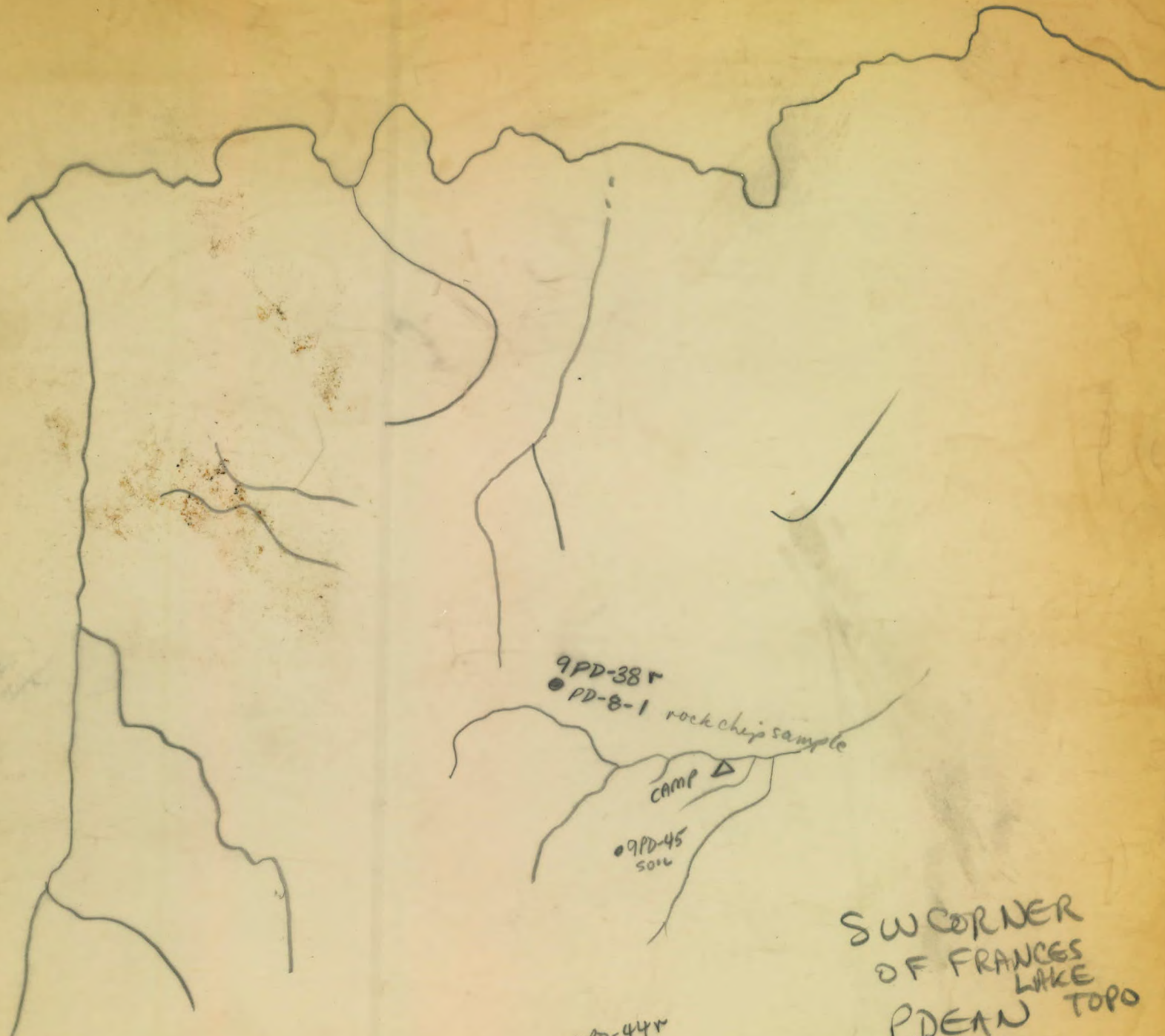


Southern corner of
FRANCES LAKE
TDRD

A12245-288

P. DEAN

105H4



9PD-38r
● PD-8-1 rock chip sample

CAMP ▲

● 9PD-45
soil

● 9PD-44r

● PD-8-2

SW CORNER
OF FRANCES
LAKE
P. DEAN TOPO
A12189-435

105G1

105H4



SW CORNER OF FRANCES
LAKE SHEET
P. DEAN

A12189434

105 H4

N ↑

SAMPLE NO.	to
N.T.S.			
PHOTO			
SAMPLER			
PROJECT			
SCALE			
DATE			
GEOGRAPHIC LOCATION:			
SHEET	of
SAMPLE LOC PLOTTED			
VALUES	"		
GEOLOGY	"		
REMARKS:			

X99D-50 PANNING
Δ CAMP

A0245-288

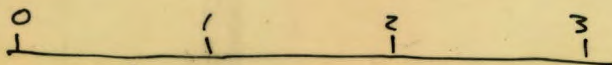
99D-52
(look) →
vicinity of
Contact

bonef scarn
& thin limy beds
skeletal

99D-51 PANNING

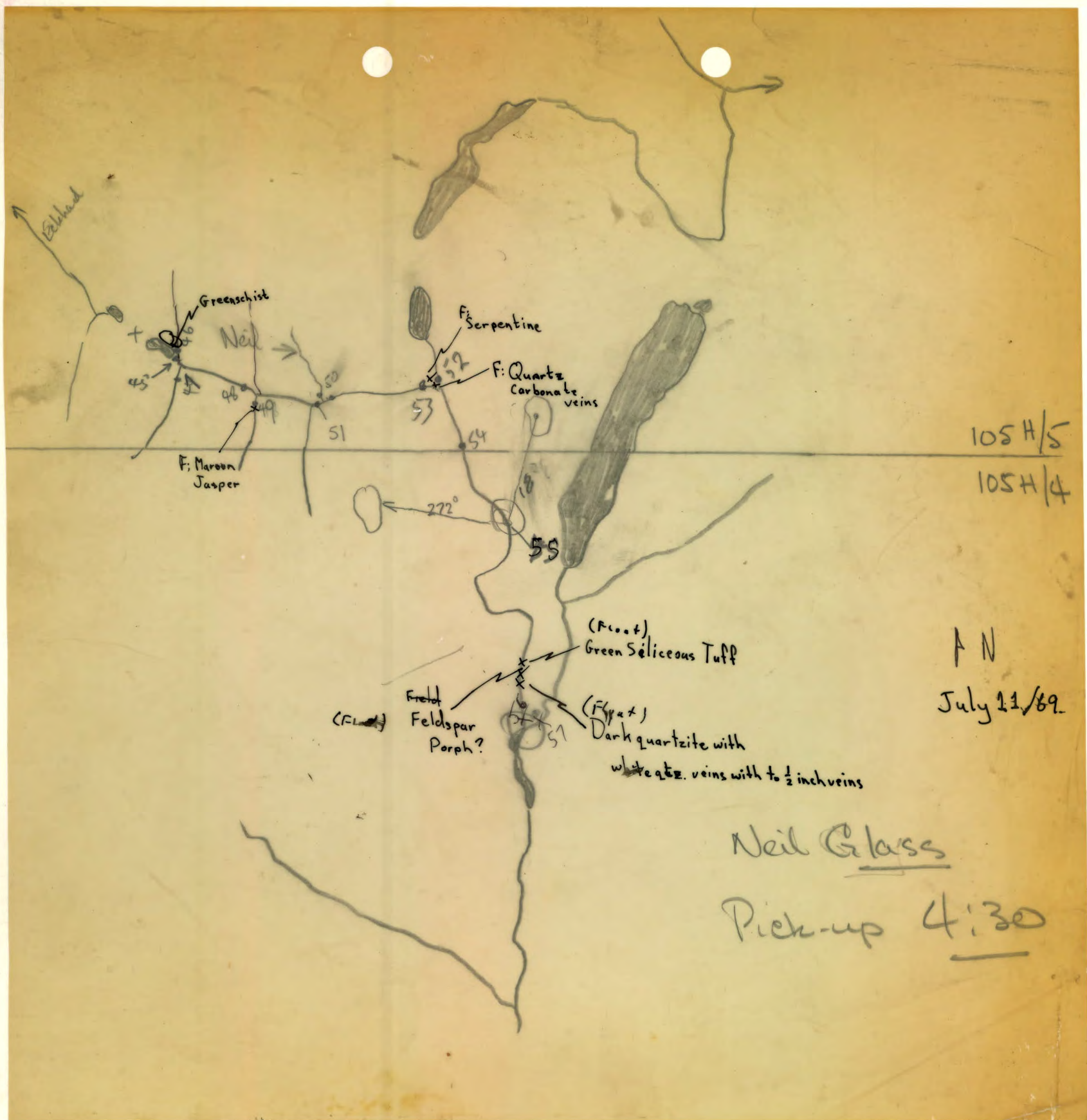
P. DEAN

Neil S. Glass
July 7/69



1" = 1 mi

map → 105 H/4



105H/5

105H/4

A N

July 11/89

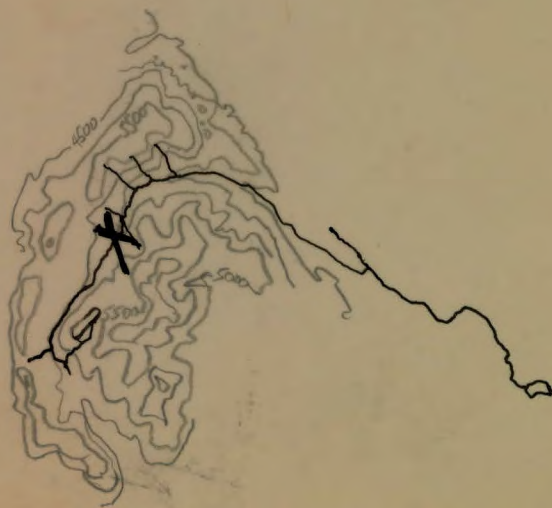
Neil Glass

Pick-up 4:30

105 1/4

A
N

Neil S. Pan



A
N

↑
N



RAY WELLS
JULY 7, 1969

AIR PHOTO
A 12245-29292

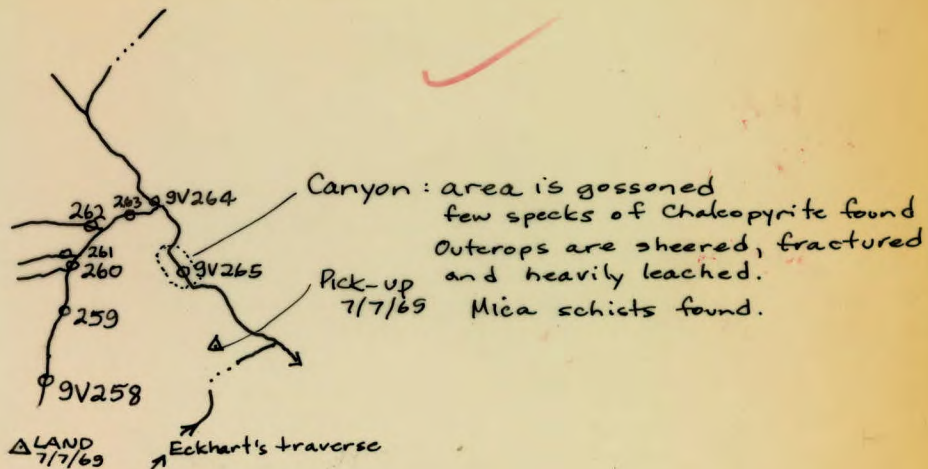
1" = $\frac{1}{2}$ mi.

RK SAMPLES
TAKEN

MAP 105 H/4
MAP 105 H/4

Walter Hamilton
105 1/4
A-12281-133-142
15/1/69





MAP: 105 H/4

(FRANCES LAKE
4 MILE)

SCALE: 1" = 1 mile

PHOTO: A12245-293

NAME: G DENTON
(# 'V')

DATE: 7/7/69

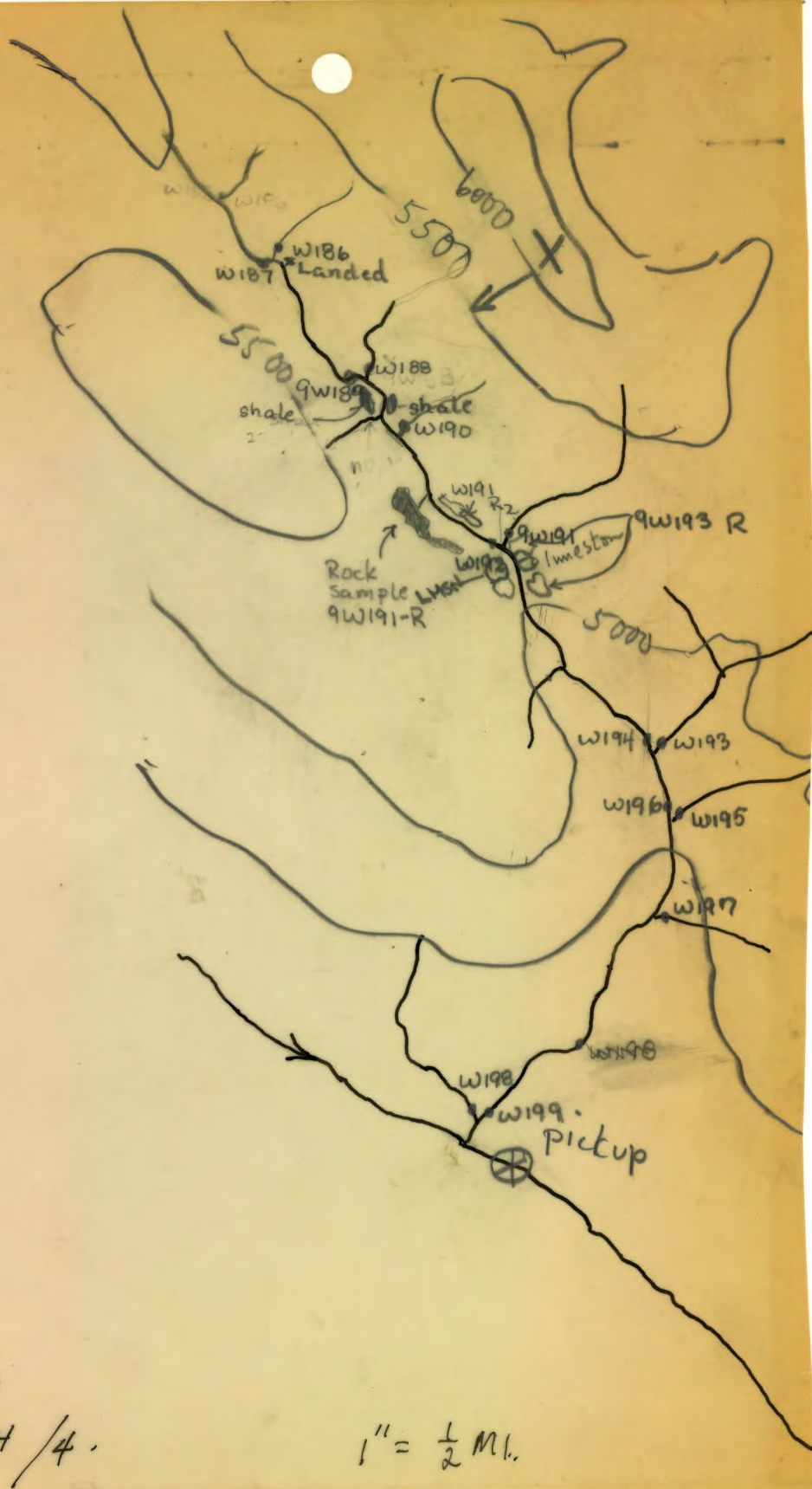
NB.

TRACING FROM

GSC AEROMAG

1:63,360

25



Werner Gruenwald July 7/69
A12245-290 Map 105 H / 4.

1" = 1/2 Mi.

W. Greenwald
15/2/69
105 N/4 - N-5

