

013721

ATLAS EXPLORATIONS LIMITED

(N. P. L.)

330 MARINE BUILDING
355 BURRARD STREET
VANCOUVER 1, B. C.

MEMO TO: R. E. G. Davis
E. O. Chisholm
C. L. Smith

FROM: John S. Brock DATE: January 11, 1967.

Re: MINERAL SHOWINGS - FRANCES LAKE AREA

In reference to the attached topographic maps, each showing has been noted in the corresponding numbers applied to items listed in this summary:

Taylor's part of Frances Lake
Tools et Taylor

✓ #9 ✓ FR 1: The DON mineral claim group staked by Don Taylor in 1959 with Gordon Tool. This property lapsed in 1960 and was re-staked by Jack Copeland in 1961. As a result, it lapsed again and was re-staked by George Green in 1962. The property was examined by Kennco in 1964, and in March 1966 the property was staked again by Hugo Brodel for Don Taylor and Bert Nesbit. To date a total of 12 claims cover silver, lead, zinc, moly mineralization in quartzite.

Tools et Taylor

✓ #10 ✓ FR 2: Copper prospect discovered by Jake Hundere and John Graham, examined by Fyn Campbell and T. L. Sadlier-Brown.

Copper quartzite Sadlier Labs

Add

✓ #11 ✓ FR 3: Copper tungsten prospect, 40 claims of which were originally staked by Merle Martin of Watson Lake. In 1965 the property was examined by Mount Billings Ventures and re-staked in September of 1966 by Cassiar Asbestos Corporation who covered the known showing and surrounding area with approximately 500 claims.

✓ #12 ✓ FR 4: Copper tungsten property, originally 10 claims, examined by Kennco in 1959. The claim groups have now lapsed.

✓ #13 ✓ FR 5: Barite, lead, zinc showing, 16 claims staked by Pete Risby June 8, 1965. Examined by Eric Ostensoe of Mount Billings Ventures. Property reported to have two trenches, both across mineralization. Claim group is now under option to Ramada Mines who, as of December 1966, have made a decision to renew their option for another year.

Add

[Handwritten scribbles and signatures]

- #1 ✓ FR 6: Mat Berry Mines main showing consisting of silver, lead, zinc mineralization in arsenopyrite and chalcopyrite. The ground is held by approximately 90 claims. Development work to date has included hand trenching and diamond drilling.
- ✓ #14 ✓ FR 7: Copper, nickel, silver, lead, zinc and cobalt mineralization, covered by 24 claims staked by Pete Risby. Showing has been hand trenched and geology done by Eric Ostensoe. Property is now under option to Ramada Mines.
- ✓ #15 ✓ FR 8: Copper property originally examined in 1935 by Gavin Gerome of Asarco. The property has been re-staked many times and is presently under option to Silver Key Mines by Ron McBean who recently staked the area in July 1966.
- le ✓ #16 ✓ FR 9: Asbestos showing staked by Risby in 1964 for the Frances group. The property was then optioned to John Mansville who had development work conducted by Harold Smith. The mineralization is described as being patchy and consisting of 1/2" fibres. The 24 claims lapsed in 1966.
- ✓ #17 ✓ FR 10: 24 claims staked by Alec Mercier in April of 1966 over reported asbestos showing.
- ✓ #18 ✓ FR 11: Copper showing staked by Risby and Vic Needle in 1962 for Yukon Pacific group. Claims lapsed in 1963 and were re-staked during March of 1966 for Highland River Mines who now own the 48 claim block. Norquest geologist, Gib McGinnes, reports chalcopyrite replacement mineralization in limestone.
- ✓ #19 ✓ FR 12: Copper, lead, zinc showing staked in 1963 for Norquest Syndicate, subsequently examined by G. McGinnes who allowed claims group to lapse.
- ✓ #20 ✓ FR 13: 24 claims covering copper, lead, zinc showing owned by Norquest Syndicate. Claims still in good standing with development work done by cat trenching.
- *3 ✓ #21 ✓ FR 14: 300 claims covering Norquest Syndicate's Blackjack Mountain main showing.
- ✓ #20 ✓ FR 15: 40 claims belonging to Norquest Syndicate Pine Tree showing.
- ✓ #21 ✓ FR 16: Lead, zinc showing of Highland River Mines. 10 claims staked in March 1966.

*22 FR 17: Copper showing staked in 1964 for Yukon Pacific group, now lapsed.

4 FR 18: 24 claims covering copper showing staked by Mount Billings Ventures in 1965. Re-staked in 1966 by Able Linecutting. The showing is reported to have some trenching done over it.

*23 FR 19: Mount Billings Ventures "45 Creek group" reported large low grade copper deposit.

FR 20: Mount Billings TRUTCH group. Silver, lead, zinc showing, trenched, but now open.

? *24 FR 21: Kern group, originally trenched by Mount Billings and now held by Asarco.

*25 FR 22: Copper showing, 8 claims staked in 1964 by George White of Watson Lake. Claim group now dropped.

*26 FR 23: Copper showing staked by Merle Martin in 1963. 8 claim group, now dropped.

WATSON LAKE SHEET

W 1: Copper showing staked by Ed Colpen in 1964. 4 claims still held by Colpen.

W 2: Groundhog group. 8 claims staked by Hans Anderson over copper showing in 1964.

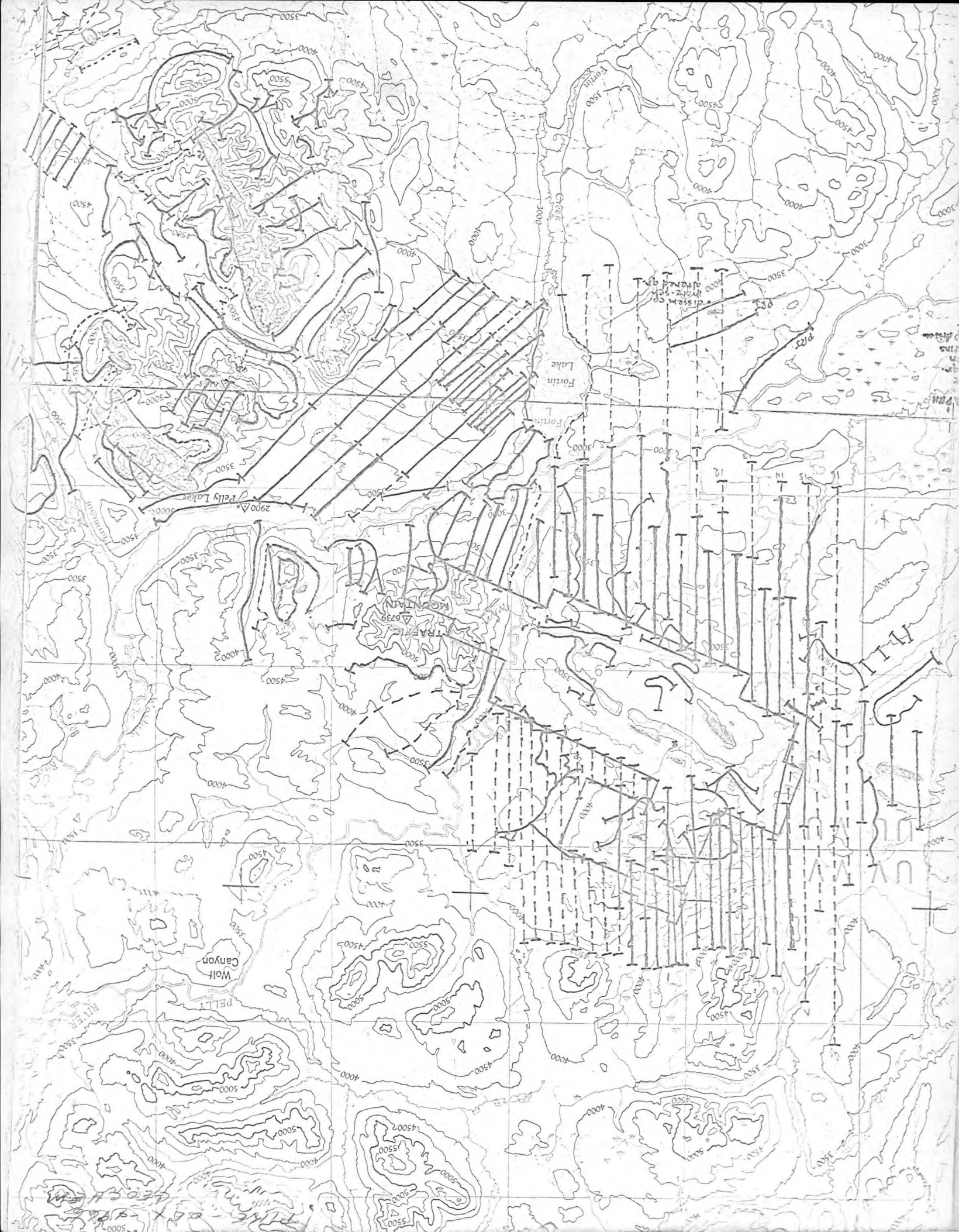
W 3: Arsenopyrite copper zinc showing, 10 claims, originally held by Kopler and Ball, now lapsed.

NAHANI SHEET

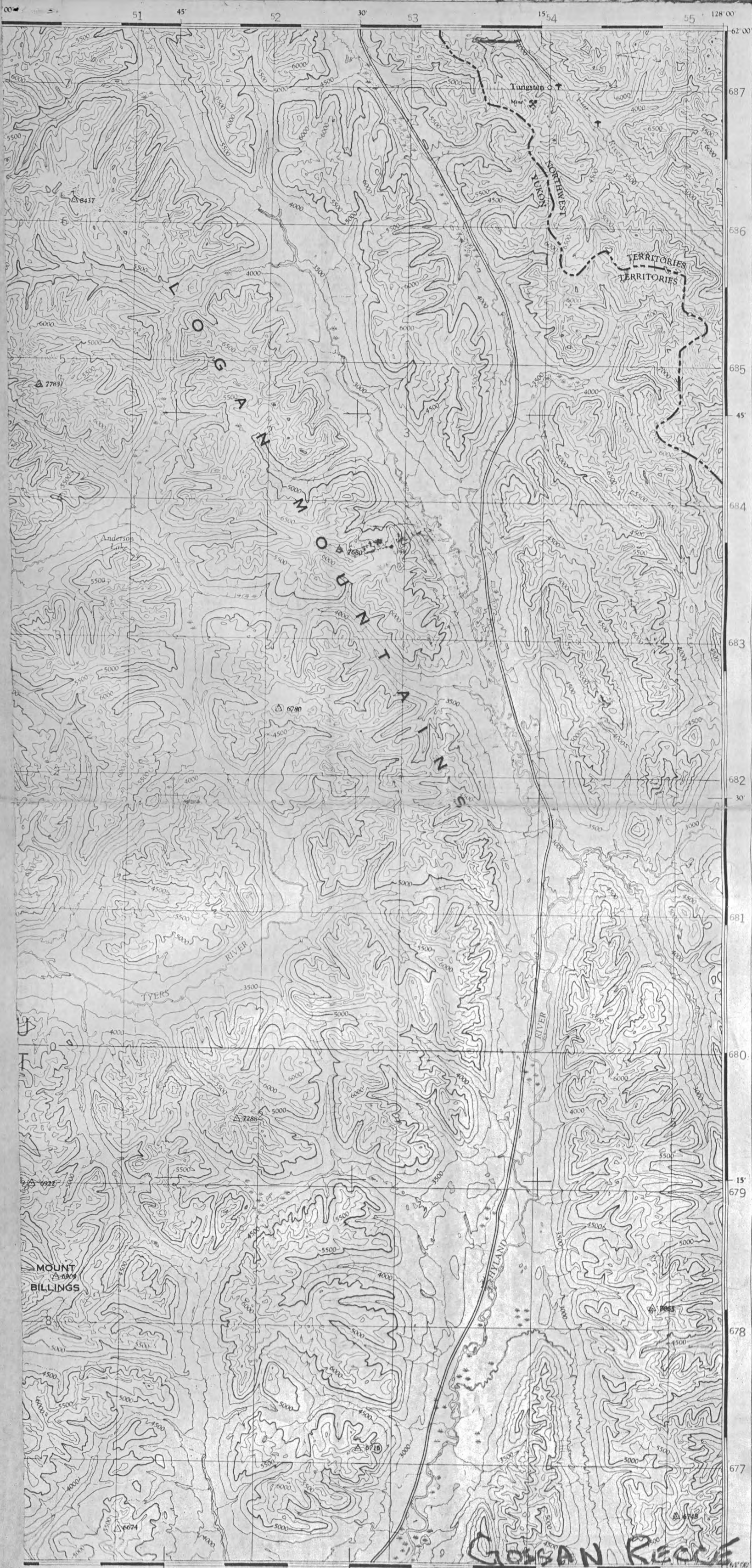
N 1: Copper showing found by Geological Survey of Canada.

Cu yellow
Pb-Zn-Au Grey
77

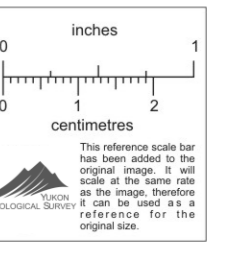
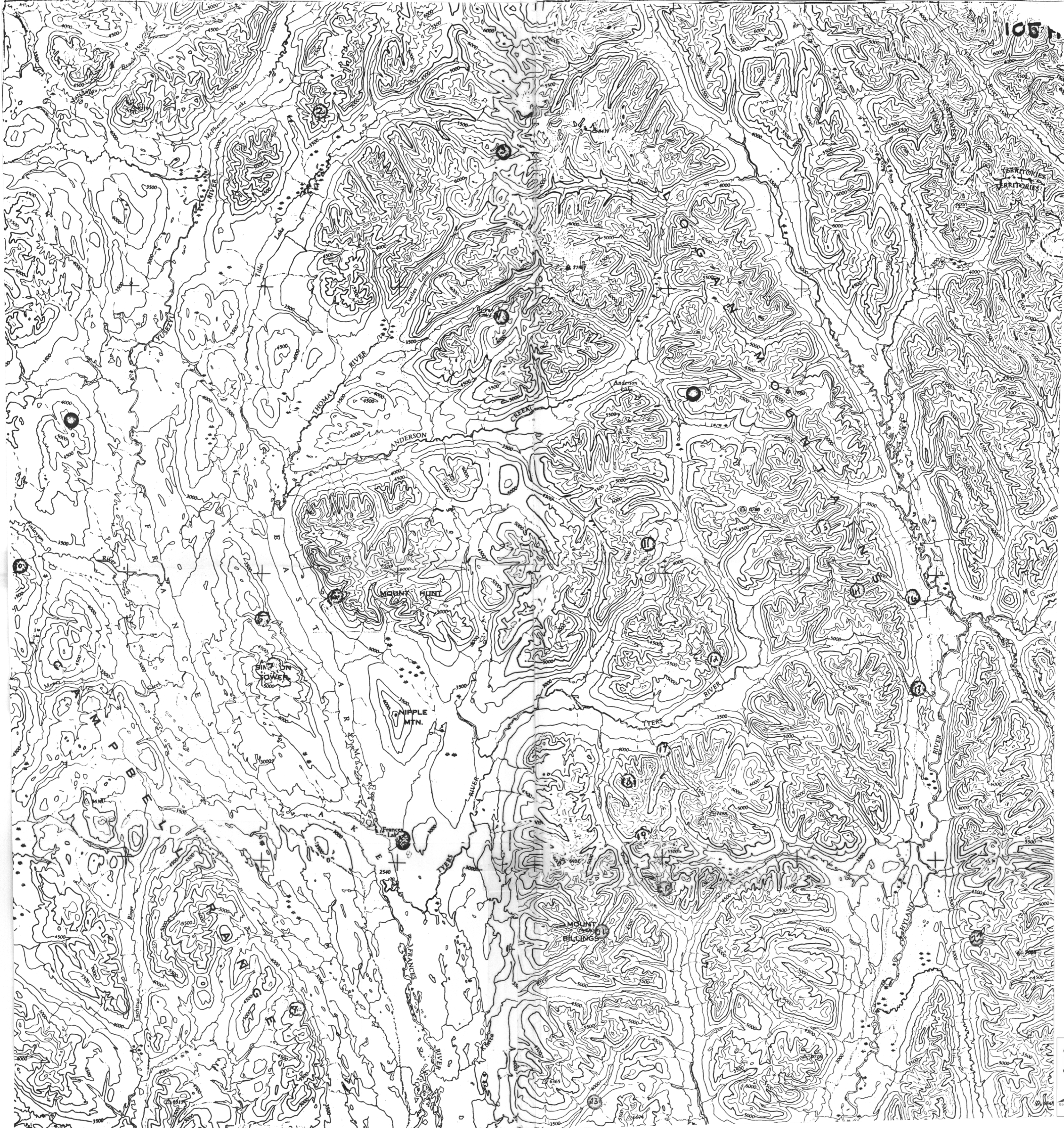
* 9 - 26 - From Mineral showing Map -
Francis Lake Area, by J. L. Brock,
Jan. 11, 1967











Refer to this map as: 105H EDITION 3 ASE SERIES A 502

See Phelps Dodge
Leak Dunn - Mackenzie Sound

4 zones 15-20' each -
W 0 3 Cu, Pb, Zn,
NW Expd. 1956
J.A. Rutherford

7
NW explor - Bustin Group
Bene Group (perm. Cu, Woz)
Brodella Cu showing attached 70cl 1959

only 1
1951

looked at by C Dunn
by Karl Spryger
in parallel

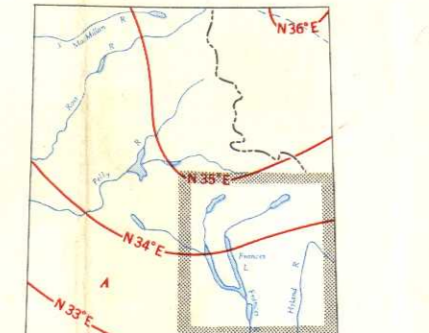


GRID ZONE DESIGNATION 100 000 M SQUARE IDENTIFICATION	TO USE A STANDARD REFERENCE ON THIS SHEET TO NEAREST 1000 METRES
9 V V U W U 6 8 0 T T T W	TRIANGULATION STA 1 Read letters identifying 100,000 metre square in which the point lies. 2 Locate first letter (V or W) and line to left of point and read (800) figure, taking the line either on the top or bottom margin, or on the line itself. 3 Estimate tenth from grid line to point. 4 Locate from 100,000 M grid line the 1000 metre point and read (050) figure, taking the line either on the left or right margin, or on the line itself. 5 Estimate tenth from grid line to point. LAMPY REFERENCE 45 00000 If reports beyond 10" in any dimension, Grid Zone Designation as 9VWT0583

TEN THOUSAND METRE
UNIVERSAL TRANSVERSE MERCATOR GRID
ZONE 9

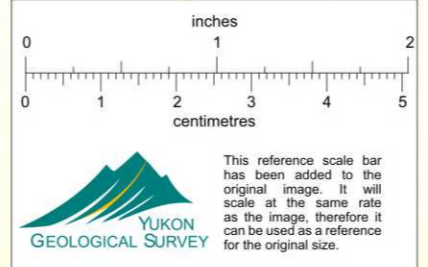
THE DECLINATION OF THE COMPASS NEEDLE, 1951.

Surveyed, compiled, drawn and printed by the ARMY SURVEY ESTABLISHMENT R.C.E., 1040-51
Aerial photography by R.C.A.F., 1949.
Edition 3 printed 1964.



Scale 1:250,000
1 inch to 4 Miles Approximately
Miles 0 5 10 15 20
Kilometres 0 5 10 15 20

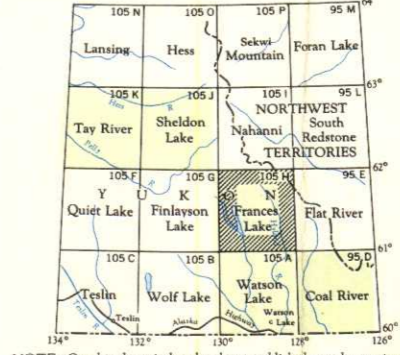
REFERENCE	
Road, Hard Surface, All Weather	More than 2 Lanes
Road, Hard Surface, All Weather	Less than 2 Lanes
Road, Loose Surface, All Weather	More than 2 Lanes
Road, Loose Surface, All Weather	Less than 2 Lanes
Road, Loose Surface, Less than 2 Lanes	All Weather
Road, Loose Surface, Less than 2 Lanes	Dry Weather
Railway, Multiple Track	
Railway, Single Track	
Boundary, International	
Province or State	
City or District	
Reservations, Indian, Military, Park, etc.	



Contour interval 500 Feet.
All Elevations in Feet above Mean Sea Level.
North American Datum 1927

REFERENCE

Triangulation Station	Spot Elevation, in feet	257
Contour, Elevation	Wooded Area	
Depression	Swamp or Marsh	
Approximate		
Stream, Intermittent	Navigation Light	W.L. 241
Dem. Falls		
Aerodrome, on Land	Elevation in Feet 250	
Aerodrome, on Water		
Main Electric Power Line		



NOTE: On the above index the sheets published are shown in red.

FRANCES LAKE
YUKON TERR.-NORTHWEST TERR.

SHEET 105H
THIRD EDITION