

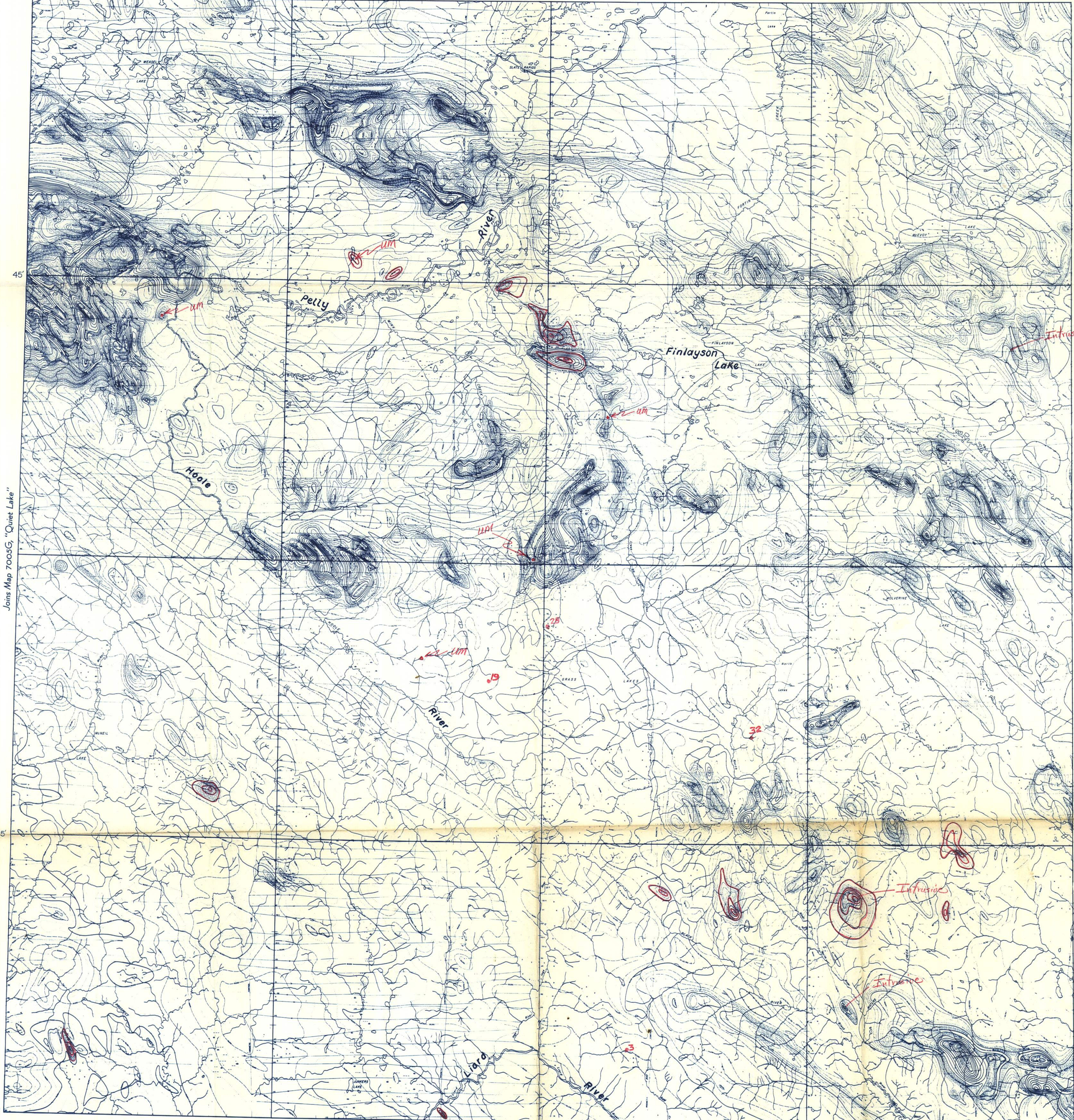


GEOLOGICAL SURVEY OF CANADA
DEPARTMENT OF MINES AND TECHNICAL SURVEYS

AEROMAGNETIC SERIES

SHEET 105G

132° 00' 30' 131° 00' 30' 130° 00' 62° 00' 61° 00'



N.C.M.I.
Properties
3
19
28
32

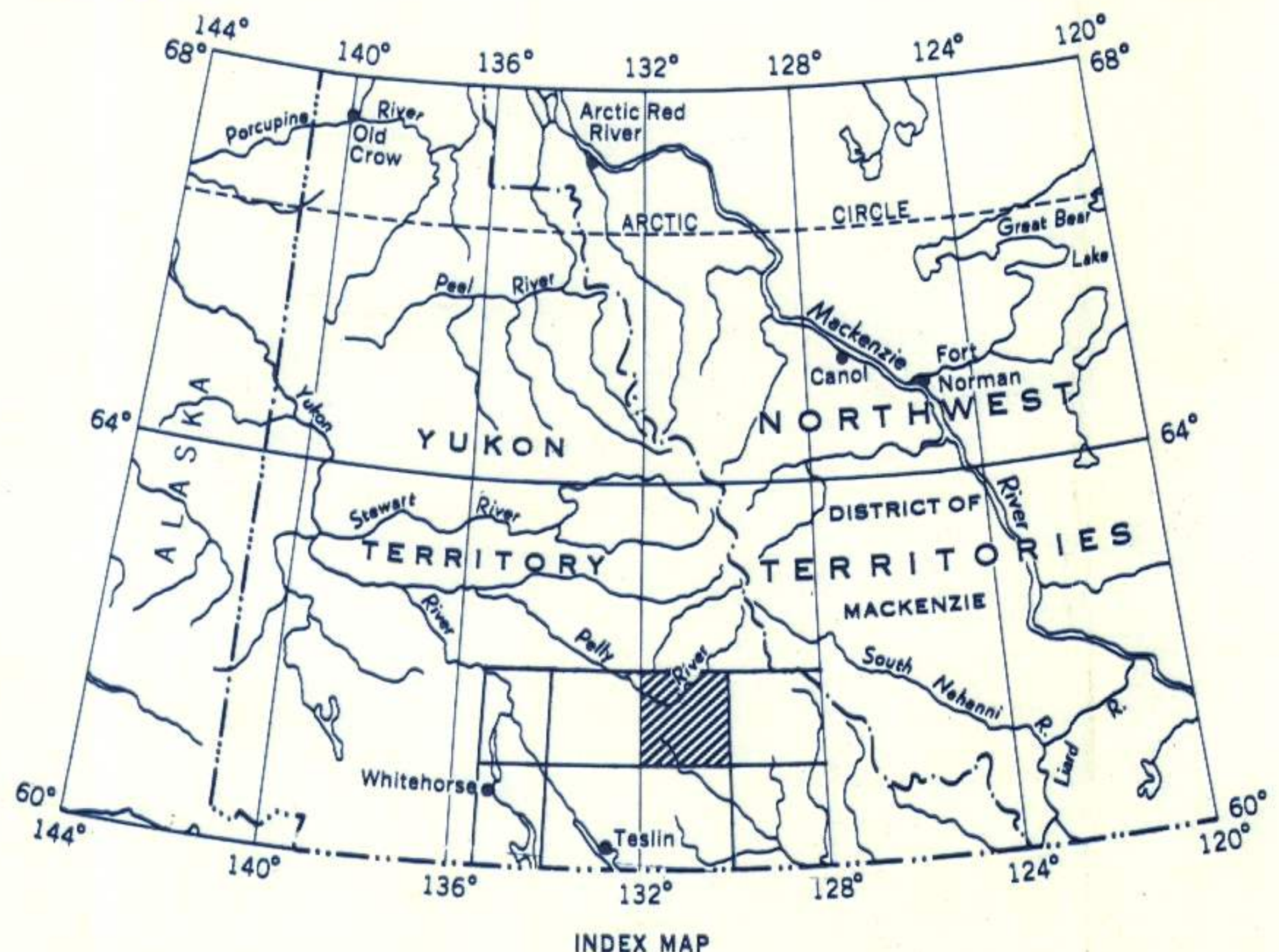
Joins Map 7005G, "Quiet Lake"

Joins Map 7007G, "Francis Lake"

Joins Map 7001G, "Wolf Lake"

PUBLISHED, 1963

132° 00' 30' 131° 00' 30' 130° 00' 61° 00'

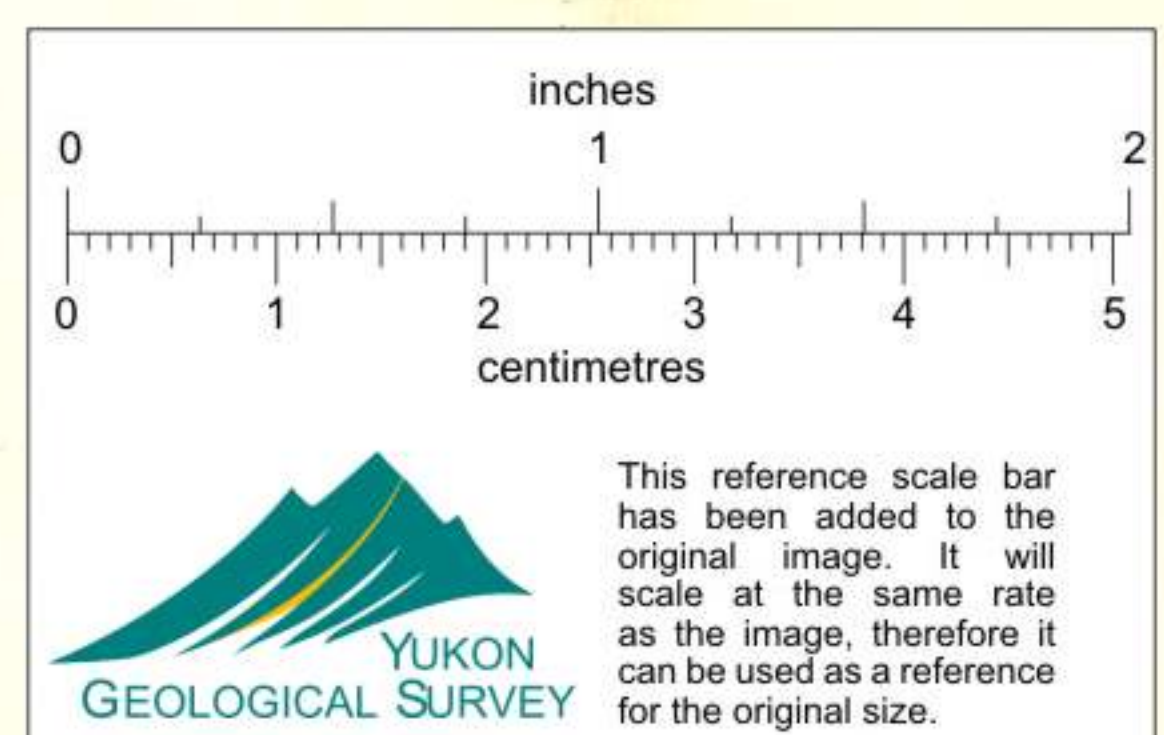


MAP 7006G
FINLAYSON LAKE
YUKON TERRITORY

Scale: One Inch to Four Miles = $\frac{1}{253,440}$
Miles 4 2 0 4 8 12

Airborne magnetic survey, June to September, 1961, by Aero Surveys Ltd.
Vancouver; four mile map compiled from one inch to one mile geophysical maps
published by the Department of Mines and Technical Surveys

No correction has been made for regional variation



GEOPHYSICS PAPER 7006G
FINLAYSON LAKE
YUKON TERRITORY
SHEET 105G

013880