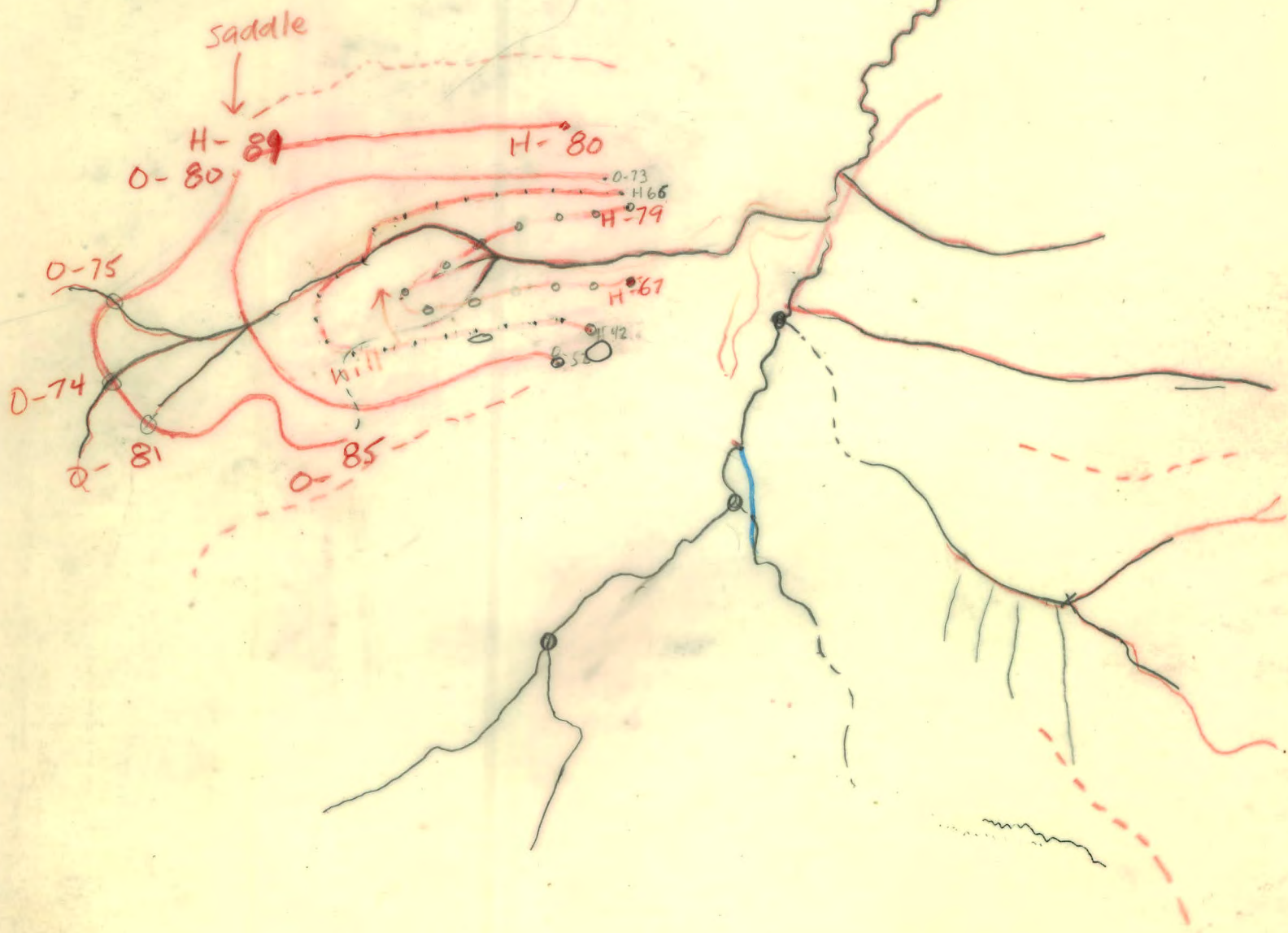


Fig. L.
Follow-up
105G-1



013897

N
P. DEAN
27-30 July 1969



A12343-84

1056

Field sheet

10561

N
↑

P. DEAN

27-30 July 1969

G-1

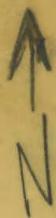


A 12348-85

105G1

P. DEAN

27-30 July 1969

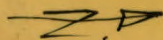




Fyre L. ↑
W. Hamilton N
July 28/69
1056/1 A12255-254

16

FINLAYSON ✓
(FIRE LAKE AREA)



Plotted
Cards



MINERALIZATION

- GALENA (IN QTE + SHST)
- CHARCO (MINOR IN QTE #1)
- PYRITE (PREDOMINATES)

SCALE: 1" = 1/2 MILE

PHOTO-A12189-207

JULY 29, 1969

R. WELLS

MAP 10541

see rocks samples for



another
day

JULY 31, 1969
FYRE LAKE AREA

GOENTON

MAP 105 G/01

SCALE: 1" = 1 mile

OK

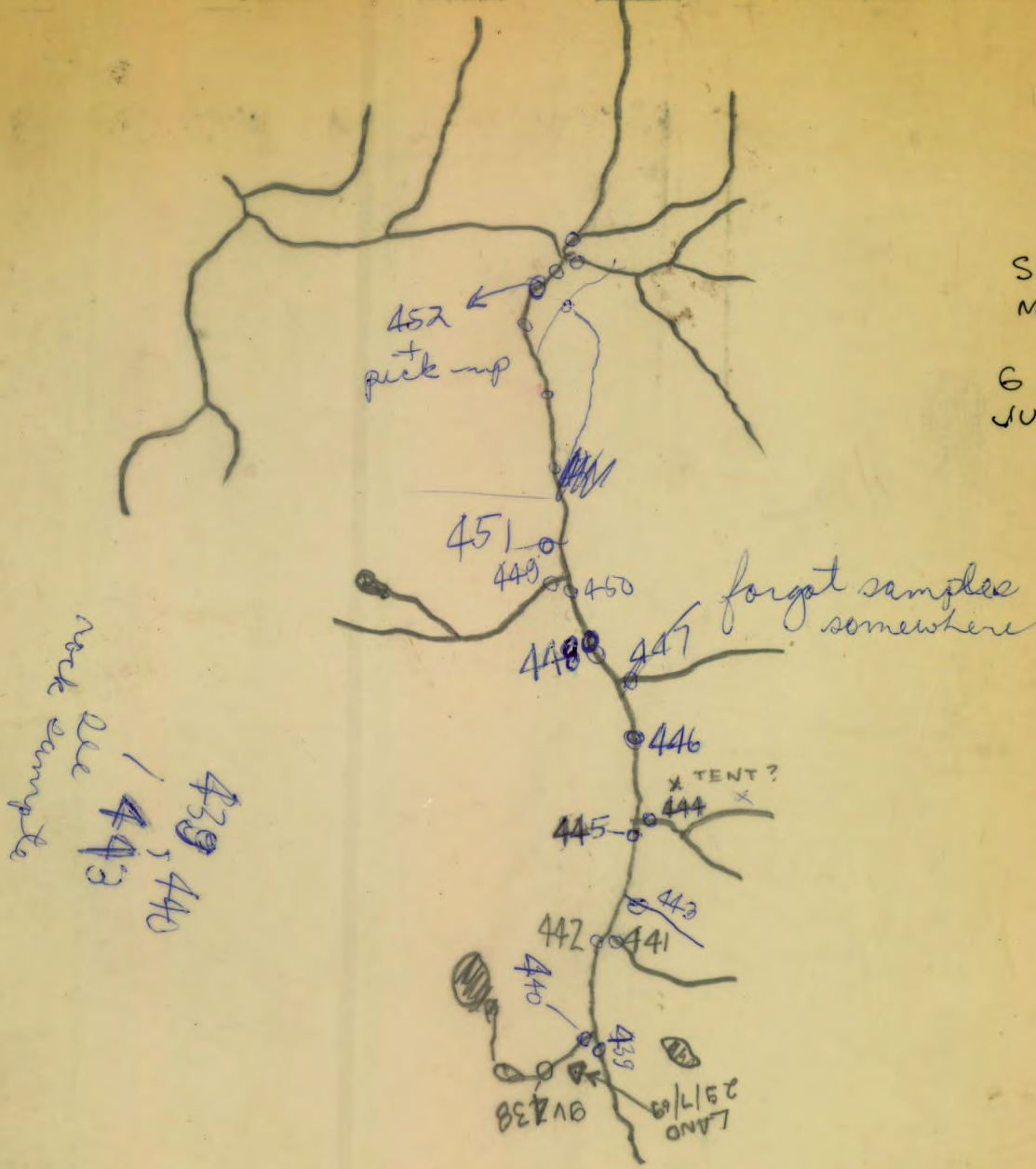
(2)

OK



SCALE 1" = 1 mile
MAP 105601

G DENTON
JULY 29, '69



TUESDAY
29/7/69
MAP 1056
FIRE LAKE



△ PICK-UP
ON RIDGE

TO FYRE LAKE
CAMP
NORTH
RIVER

427
428
OLD
CLAIMS

426

9V425
X
OLD CAMP-SITE
△ DROP
28/7/69

429

430

431

432

433

434

435

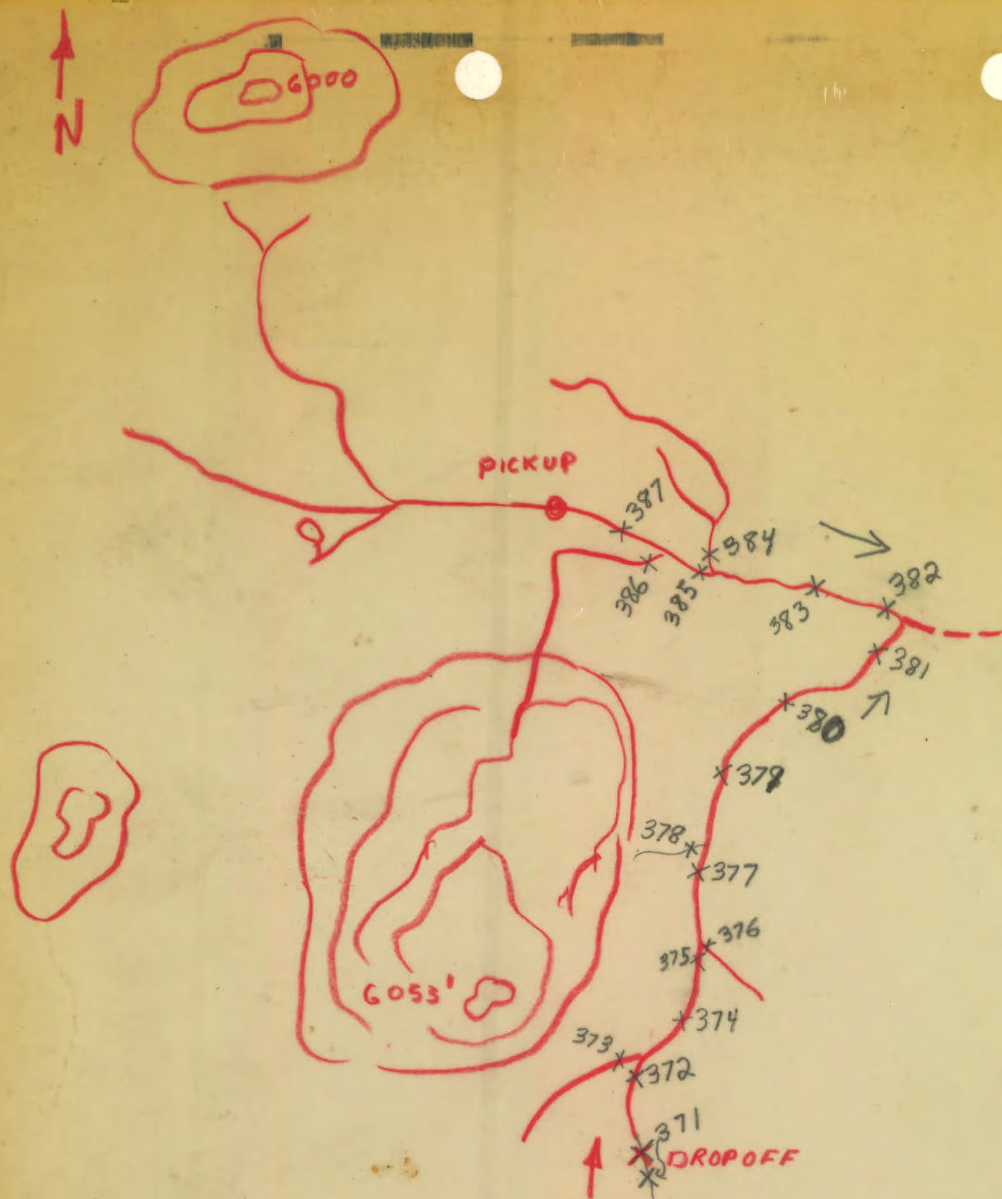
437

9V436

G. DENTON
FYRE LAKE AREA
JULY 28, 69
MAP 105 G/1

PHOTO: A 12189-220
SCALE 1" = .55 mi

↑
MOUNTAINS



Walter Hamilton
 29/7/69
 105 G/L
 1" = 1 Mi

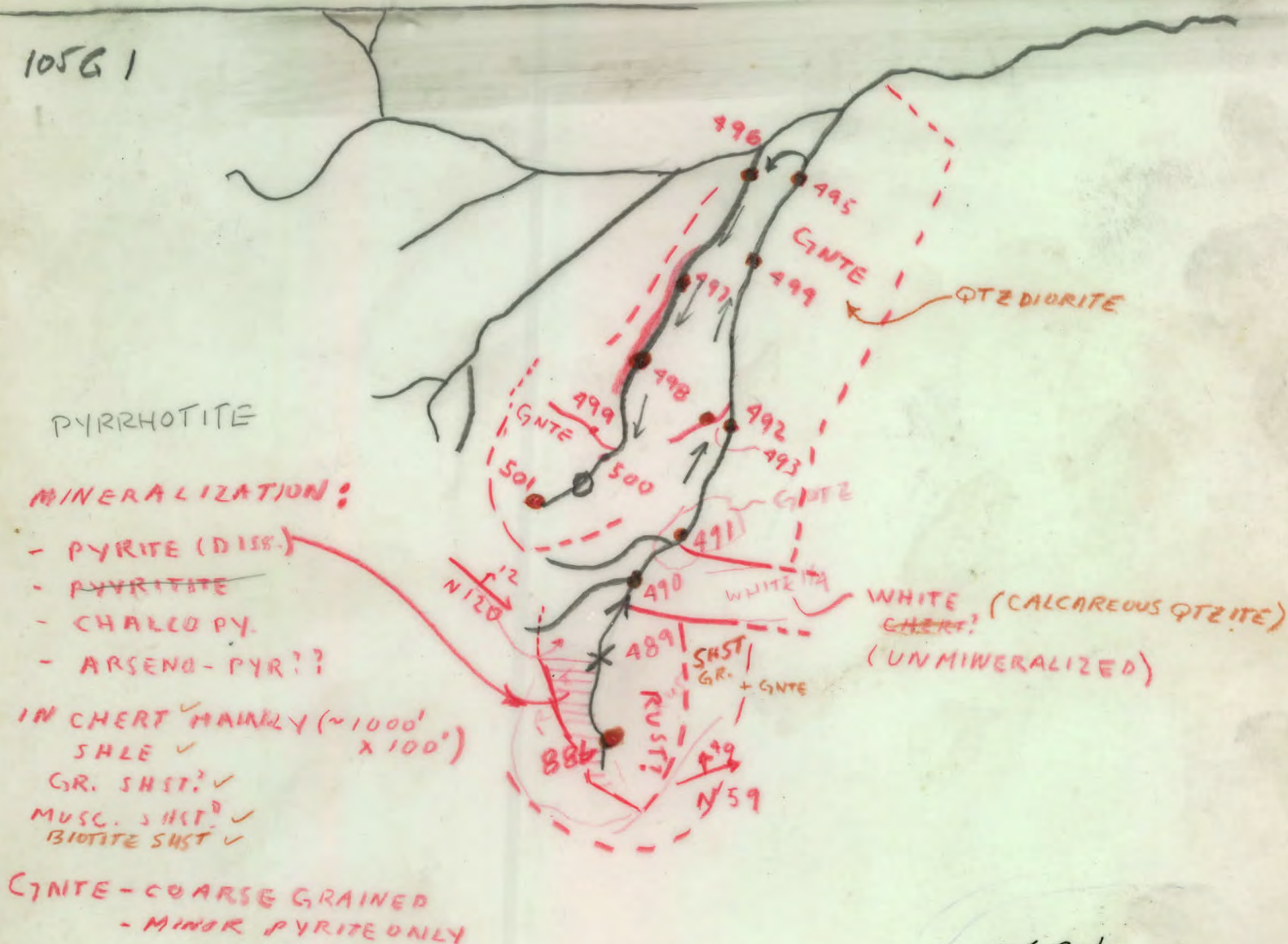
HHHHHH

FINLAYSON REGION (FYRE LAKE AREA)



You may go as arrows indicate
or zig zag across between creeks & pickup at bottom (tell McCord)
Traverse 1

105G1

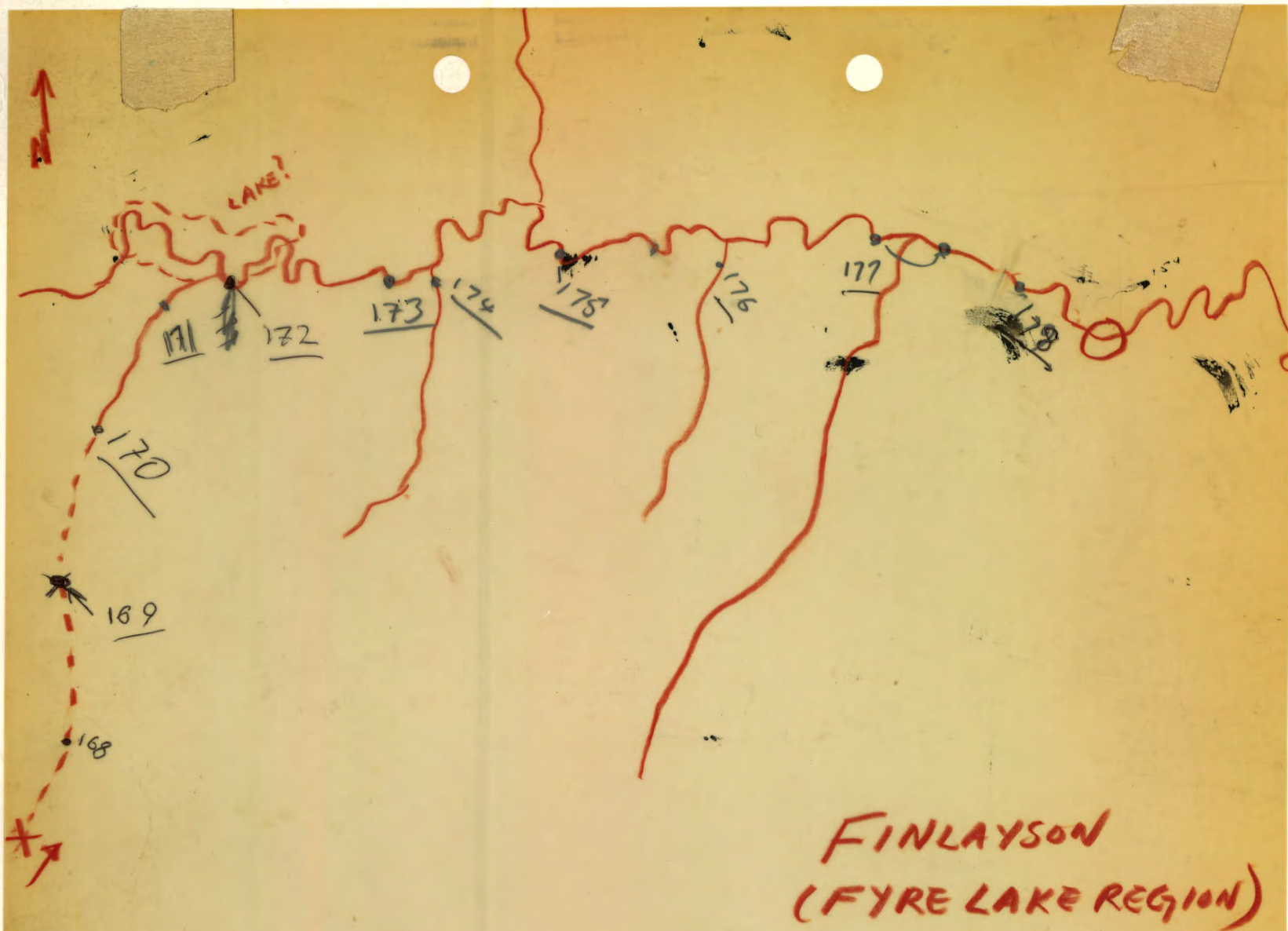


105 G-1

Aug 12, 69 12/18/69

Ray Wells

sample nos. 488 to 501



NEIL
JULY 30, 1969
1" = 1/2 mi

103 G/1

A12343-59



W. S. Glass
 105 G/1
 A 12189-208
 July 29

JN

27



Fyre L.
Neil Glass
July 28/69
1056/1
A12255-255

105 G-1

Fyne L.

Follow-up



A12189-308

John Ollie
Sept. 17/69



A12199-308

105G-1

Fyre L.
Follow-up



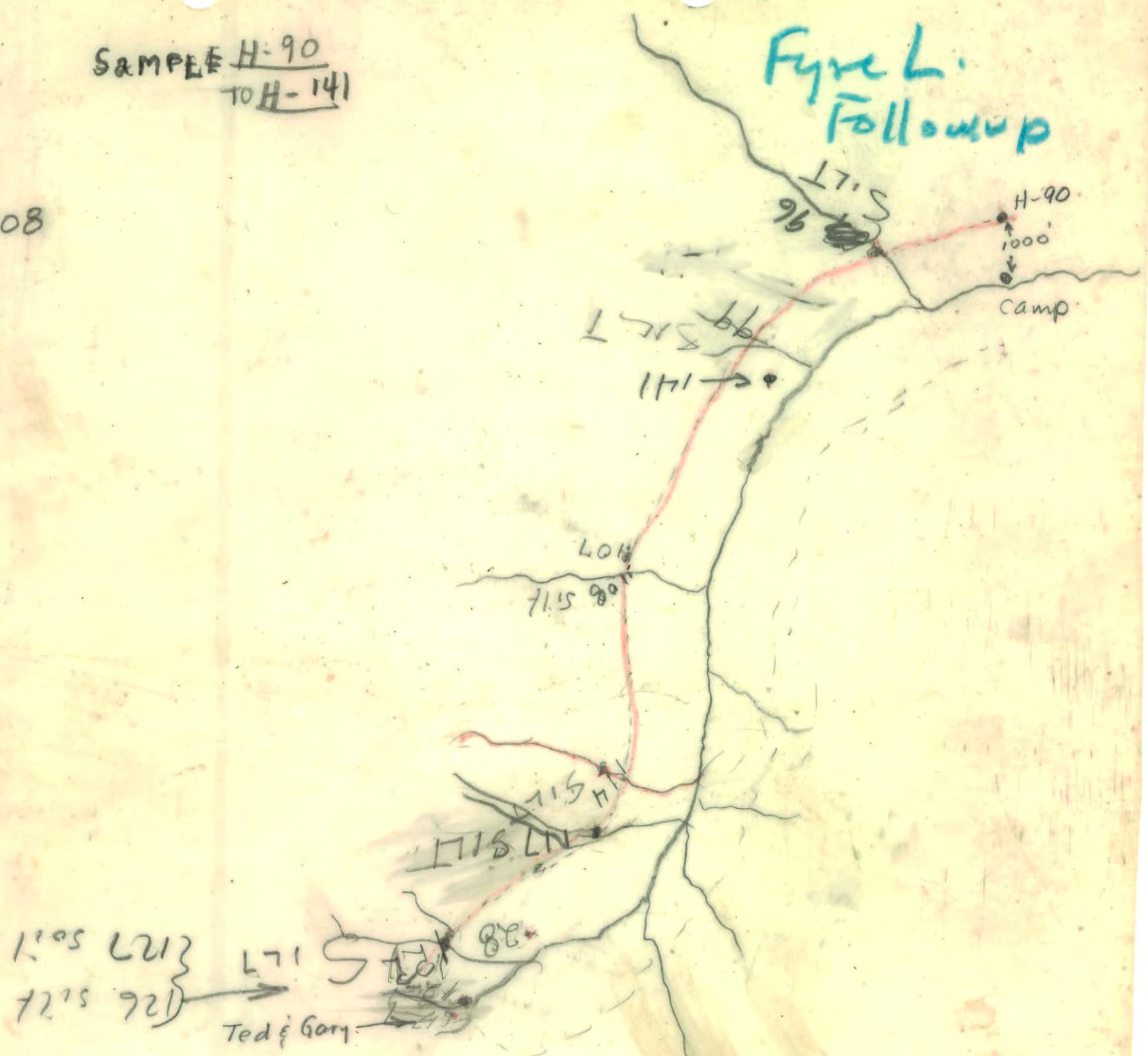


H. Atkinson
Sep 17, 69
A12189-308

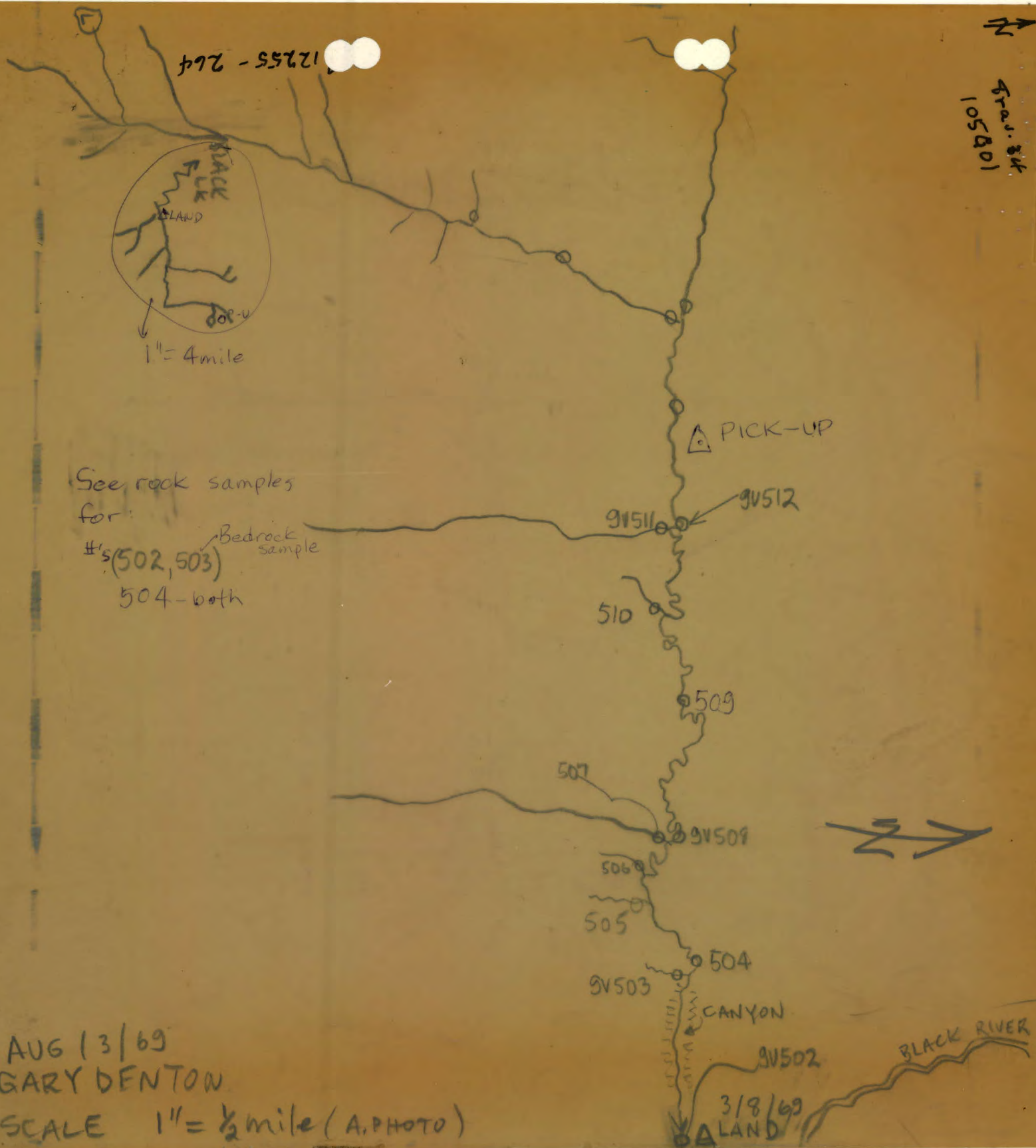
1/2 mi = 1"

SAMPLE H-90
TO H-141

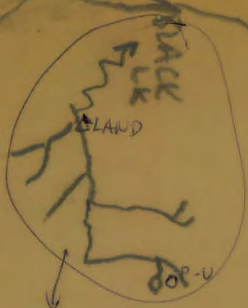
1056-1
Fyre L.
Followup



5700.84
105801



12755 - 264

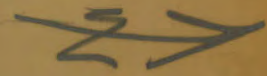


1" = 4 miles

See rock samples
for:
#s (502, 503)
504 - both
Bedrock sample

AUG 13/69
GARY DENTON
SCALE 1" = 1/2 mile (A. PHOTO)

318/69
LAND



105G-1

Fyre L.
Follow-up

A
N
G. Pearce
Sept. 10th
A12347-36

blackly jointed
capping
takes black
to dr brown?

glt. ls; gn. q. st.
P14 →
orange phre?
grey, black
chert, glt.
mica
orange with
phy. gl.
with cherty glt.

P15
carbonate
(dol?, barite?)

chl. amphi
(andesite)
cherty pyrite

chl. sd.
py, py, cpy
ls
scale sil
pyrrho

black
cherty glt.
abusey vugs

P13

P12

P11

P10

26
100

flaggy seric glt.
blackly glt. q. st.
crusy flaggy glt.

glt. ls
c. q. glt.

30

20

145

34

11

10

130

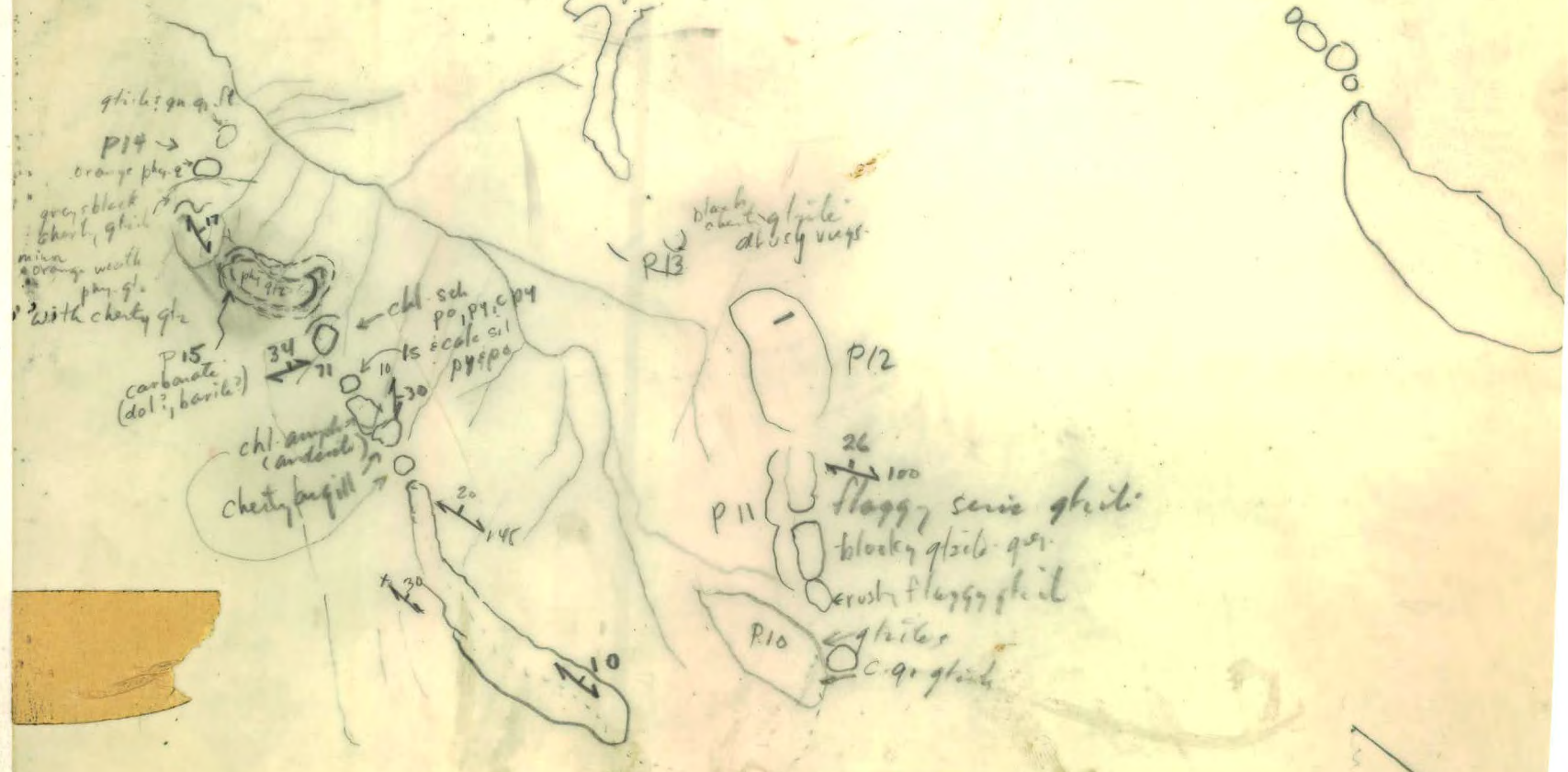
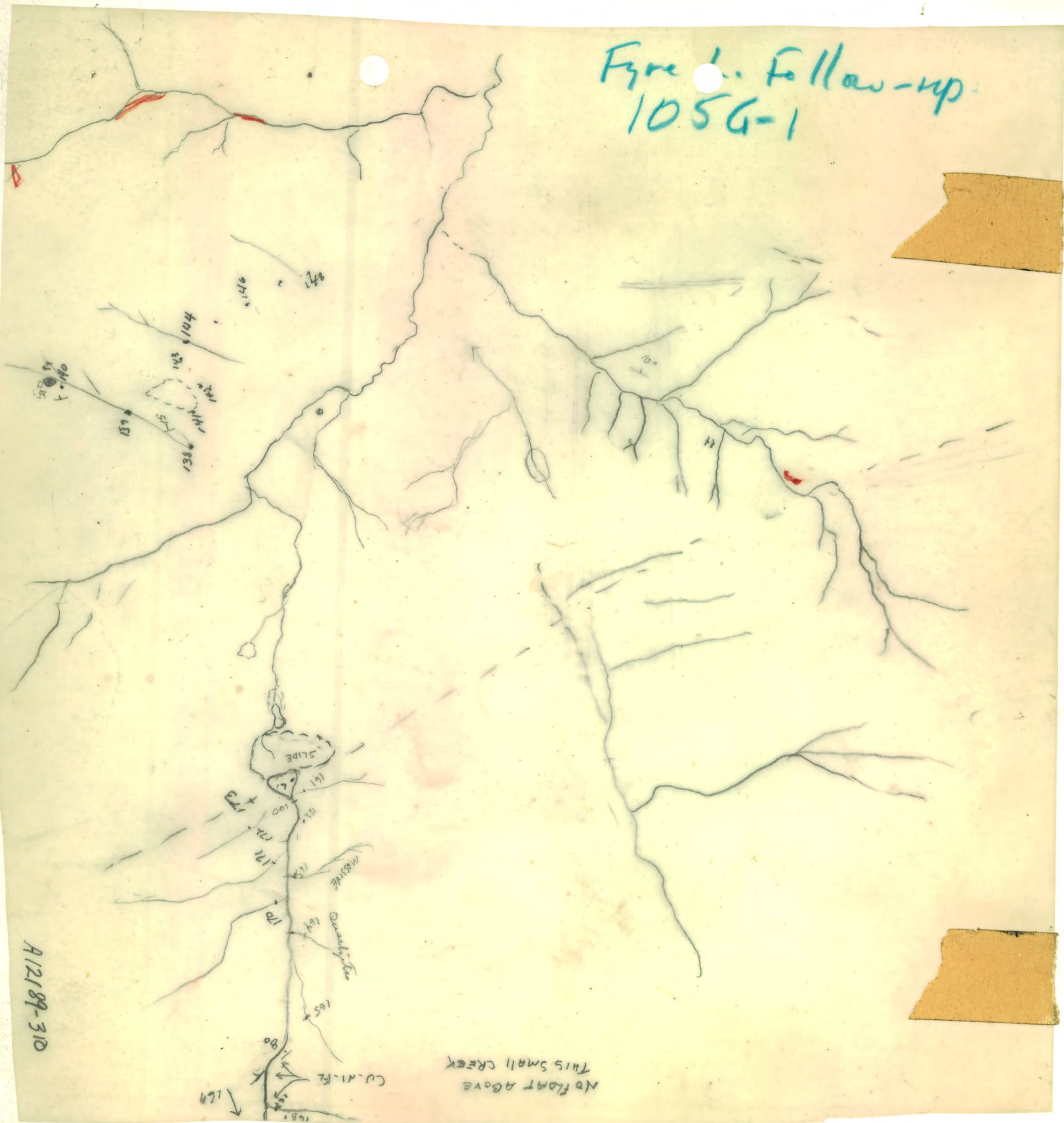


Figure 1. Follow-up
105G-1



A12189-310

NO FLOAT ABOVE
THIS SMALL CREEK

105G-1

Fyre L.
Follow-up

G. Pearce
Sept. 17th
Area #2
A12189307



A
N
G. Pearce

12343-86

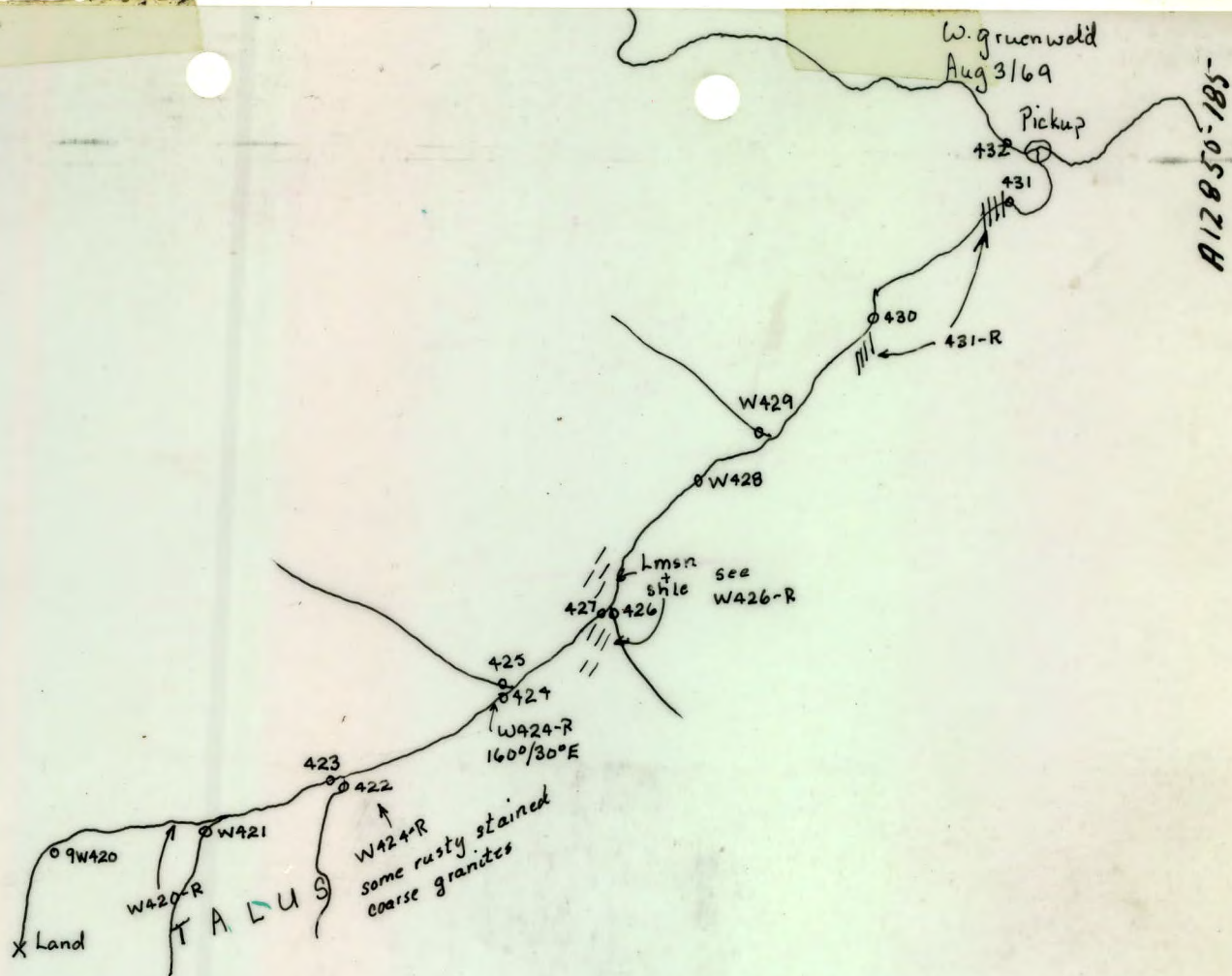
36 → 60
qtzic (ply)



Fyre Lake Follow-up

105 G-1

↑
N Trav. 23
105G 02 & 01
Nos



GRANITE
fine to coarse grained
- some containing
large rectangularly
shaped white feldspars

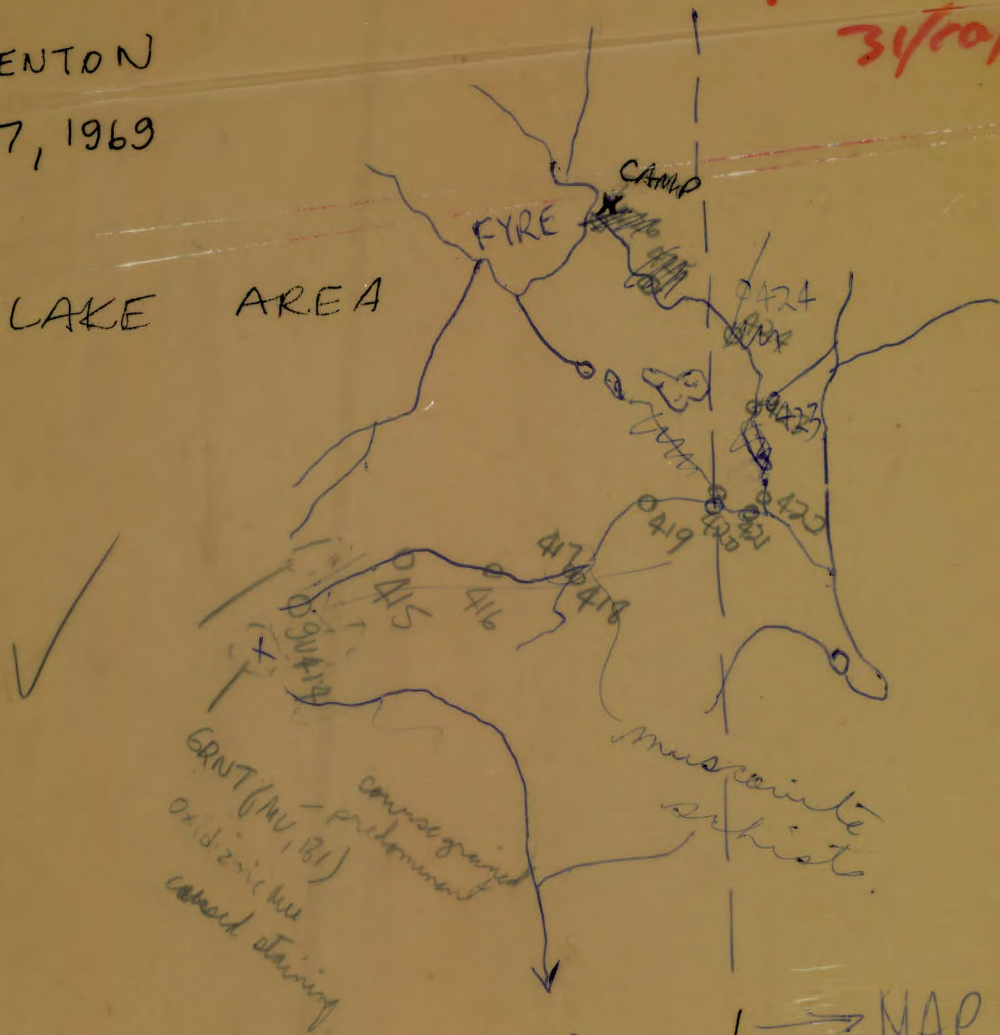
SCALE 1" = 1 mile
MAPS 105 $\frac{G}{1}$
105 $\frac{G}{2}$

GARY DENTON
JULY 27, 1969

Reyn L. Guel plotted
DND
3/10/69

FYRE LAKE AREA

27/7/69



MAP
105 $\frac{G}{2}$

MAP 105 $\frac{G}{1}$

UP BLACK RIVER

WATERS CK