

REPORT ON THE  
ANT MINERAL CLAIM GROUP

013941

FYRE LAKE AREA

Watson Lake Mining Division  
Yukon Territory

June 28 - July 29, 1967

N.T.S. 105-G-2

Longitude 130°38' West

Latitude 61°12' North

By:

Wayne J. Roberts

ATLAS EXPLORATIONS LIMITED

March 1970

TABLE OF CONTENTS

	<u>page</u>
LOCATION MAP .....	(i)
LIST OF CLAIMS .....	(ii)
KEY MAP .....	(iii)
INTRODUCTION .....	1
LOCATION AND ACCESS .....	1
GEOLOGY.....	2
GEOCHEMICAL SURVEYS .....	2
GEOPHYSICAL SURVEYS .....	2
CONCLUSIONS AND RECOMMENDATIONS .....	3

ILLUSTRATIONS

AIRBORNE ELECTROMAGNETIC MAP .....	4
AEROMAGNETIC MAP .....	5
GEOCHEMICAL VALUES MAP .....	6

LOCATION MAP

ANT MINERAL CLAIM



37 15' 38 39 131°00' 40 45' 41 30' 42 43 15'

MENT R.C.E., 1949-52.

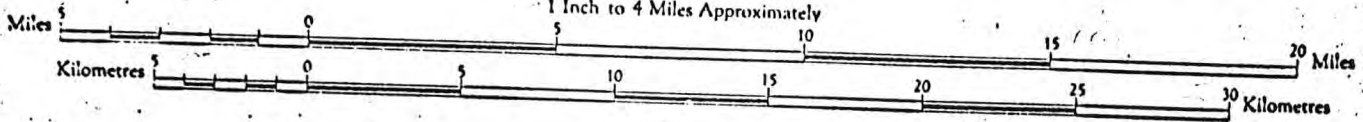
# FINLAYSON LAKE

## YUKON TERRITORY

Contour interval 500 Feet.  
All Elevations in Feet above Mean Sea Level.

Scale 1 : 250,000

1 Inch to 4 Miles Approximately



The general public may obtain copies of  
this map from the Map Distribution Office,  
Dept. of Mines and Technical Surveys, Ottawa,  
at 25 cents per copy.

### REFERENCE

Triangulation Station .....	△	Spot Elevation, in feet .....	257
Contours, Elevation .....	— 500 —	Woods Areas .....	
" Depression .....	— 1000 —	Swamp or Marsh .....	
" Approximate .....	— 500 —		
Church, School .....	⊞ ⊞		
Stream, Innumerable .....	— — —	Ferry .....	○
Dam .....	— — —	Navigation Light .....	⊙
Falls .....	— — —	Elevation in Feet 250 .....	⊙
Arrotrome, on Land .....	⊙	on Water .....	⊙
Main Electric Power Line .....	— — —		

(ii)

LIST OF CLAIMS

Claim Number

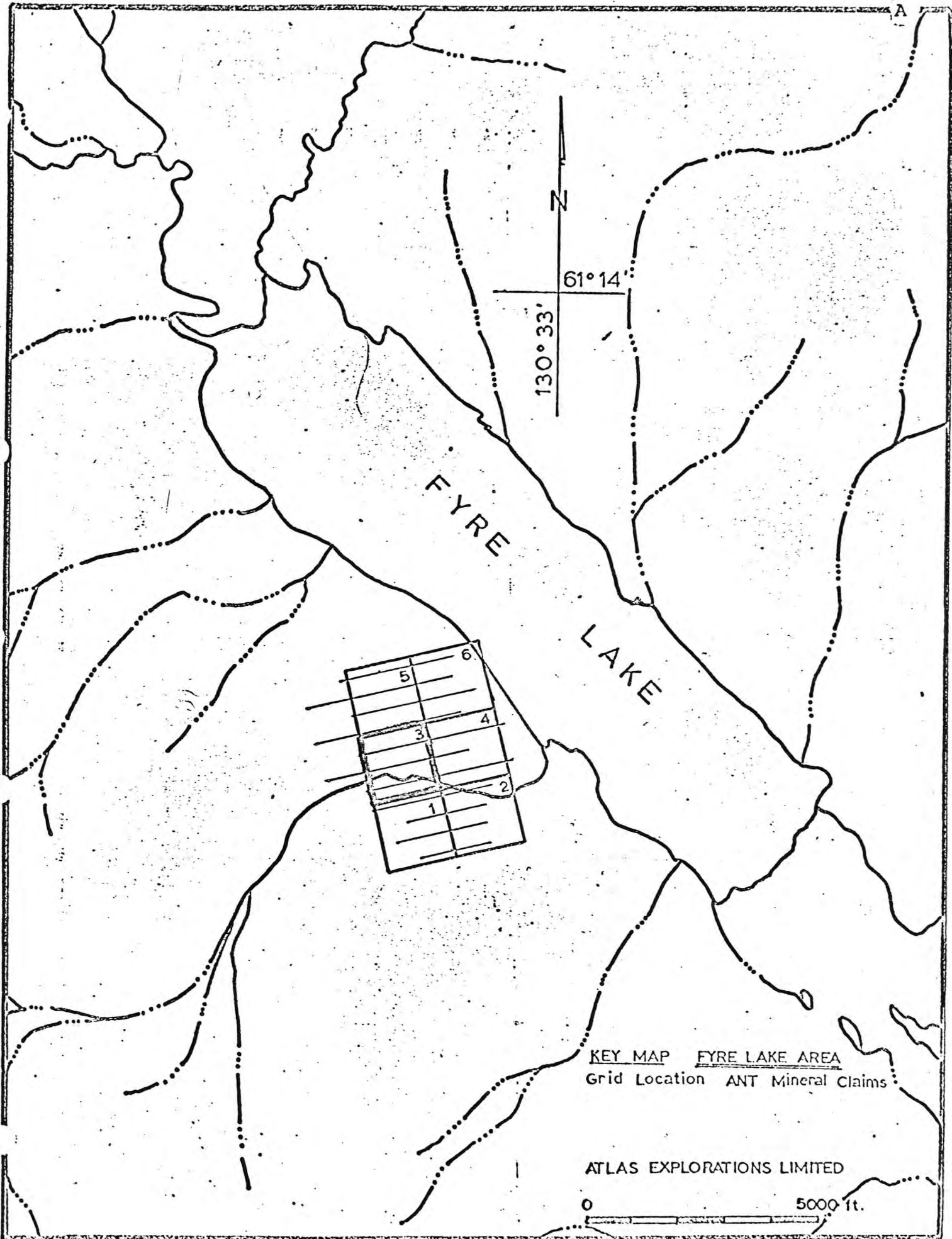
Grant Number

Date Recorded

Ant 1

Y7375

April 25, 1966



FYRE  
LAKE

5	6
3	4
1	2

KEY MAP FYRE LAKE AREA  
Grid Location ANT Mineral Claims

ATLAS EXPLORATIONS LIMITED

0 5000 ft.

# ATLAS EXPLORATIONS LIMITED

330 MARINE BUILDING  
355 BURRARD STREET  
VANCOUVER 1, B.C.

## REPORT ON THE ANT MINERAL CLAIM GROUP FYRE LAKE AREA

By

Wayne J. Roberts

### INTRODUCTION

After acquisition of a claim group in the Fyre Lake area, the region was flown with airborne electromagnetic and magnetic surveys. With the association of known mineralization to the geophysical anomalies on the nearby Dub Group, the Ant 1-6 claims were staked on a similar anomaly. Follow-up consisted of an established grid with associated geochemical, geophysical and geological surveys.

### LOCATION AND ACCESS

The remaining Ant Number 3 claim held in good standing is located on the western side of Fyre Lake, in the southeastern corner of the Finlayson Lake map sheet, N.T.S.105-G-2. It is approximately 80 miles southeast of Ross River and 32 miles south of Finlayson Lake.

Access is by float plane landing on Fyre Lake thence by float to the property.

### GEOLOGY

The Ant claim is located on the western side of the Fyre Lake fault, a parallel structure to the Tintina Trench.

A general sequence of quartz-biotite-chlorite schists striking northwest and dipping generally to the northeast, lies between sizeable stocks of intrusive granodiorite to the northeast and southwest. Also on the property, the schists are intersected by a series of northeast-trending cross faults, similar to that in the Anvil-Vangorda-Swim Lakes area.

Small greenstone intrusive bodies were noted as well as graphitic horizons on the group.

### GEOCHEMICAL SURVEYS

Both silt and soil samples were taken on two traverses across the claims but results did not show any evidence of anomalous values. The geochemical results are included at the end of this report.

### GEOPHYSICAL SURVEYS

The airborne electromagnetic survey defined an isolated conductor underlying the Ant number 3 claim with an associated aeromagnetic correlation. Ground electromagnetic and ground magnetic surveys indicated separate magnetic and electromagnetic anomalies, as shown on the accompanying maps.

CONCLUSIONS AND RECOMMENDATIONS

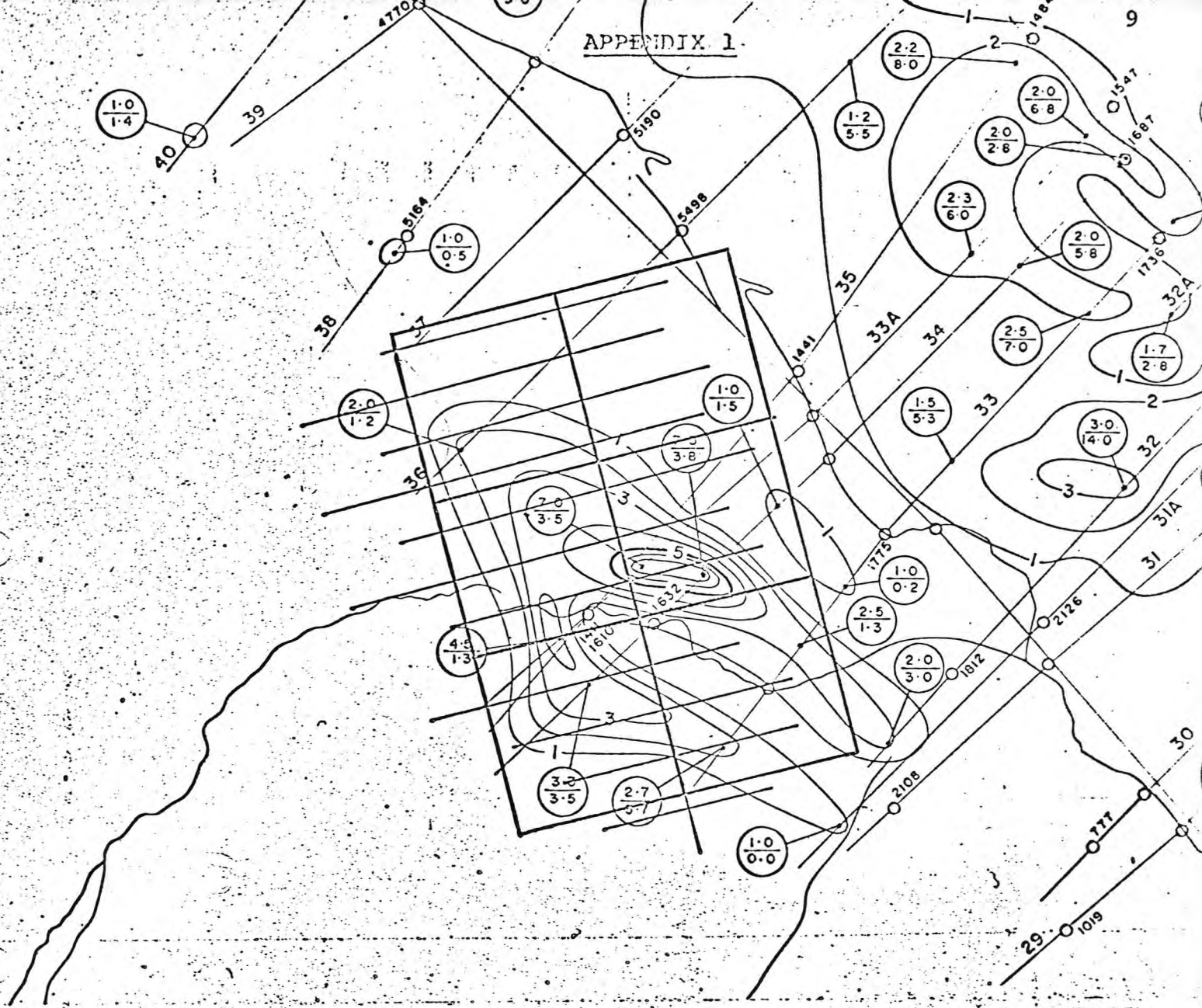
The airborne geophysical responses, investigated by geological, geochemical and geophysical follow-up, do not appear to relate to economic mineralization. The electromagnetic anomaly appears to be due to a graphitic horizon and there is a coincidence between magnetic high areas and greenstone intrusive bodies. It is recommended that further assessment would include a larger and more detailed geochemical survey as outcrop density is low in this area.

Respectfully submitted,



Wayne J. Roberts,  
Geologist.

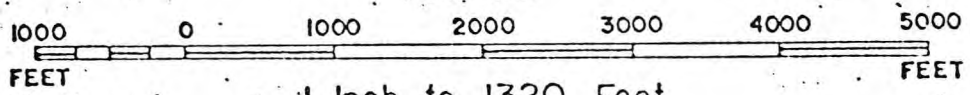
March 1970



# FYRE LAKE AREA

YUKON TERRITORY  
ANT MINERAL CLAIMS

SCALE



1 Inch to 1320 Feet

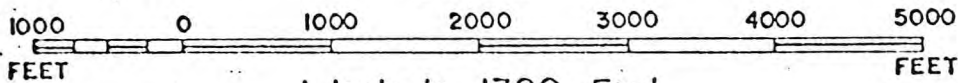
## ELECTROMAGNETIC MAP



# FYRE LAKE AREA

YUKON TERRITORY  
ANT MINERAL CLAIMS

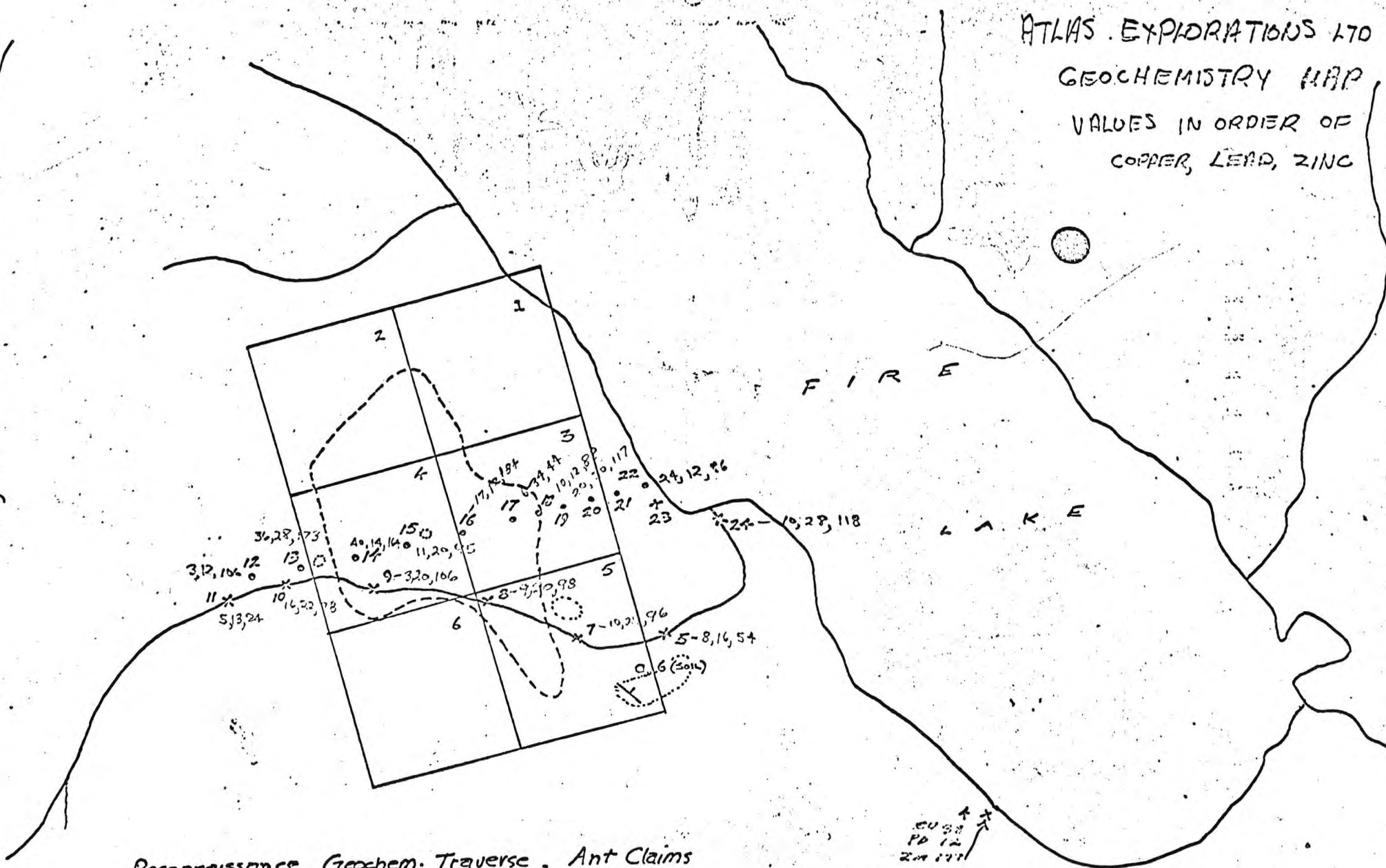
SCALE



1 Inch to 1320 Feet

## AEROMAGNETIC MAP

ATLAS EXPLORATIONS LTD  
 GEOCHEMISTRY MAP  
 VALUES IN ORDER OF  
 COPPER, LEAD, ZINC



Reconnaissance Geochem. Traverse, Ant Claims

- LEGEND:
- X SILT SAMPLE
  - o SOIL SAMPLE
  - OUTCROP AREA (APPROX.)
  - ⊞ MAG. ANOMALY

SCALE: 1 INCH TO 1500 FEET.

X  
 X  
 CU 52  
 PD 12  
 24 177

Note: all rocks seen are quartz mica schists  
 Sample Numbers are all prefixed with "T."