

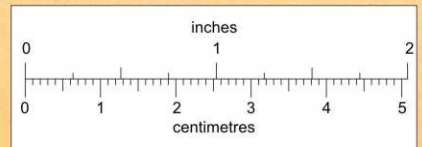
132° 00' 55' 50' Joins Map 13916, "Starr Creek" 40' 35'



61° 15' 132° 00' 55' 50' Joins Map 13636, "Prospect Creek" 40' 35' 61° 30'



GEOLOGY



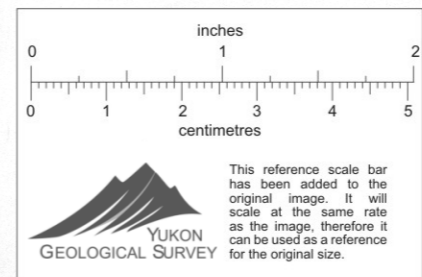
This reference scale bar has been added to the original image. It will scale at the same rate as the image, therefore it can be used as a reference for the original size.
YUKON GEOLOGICAL SURVEY

McNeil Lake

105 G

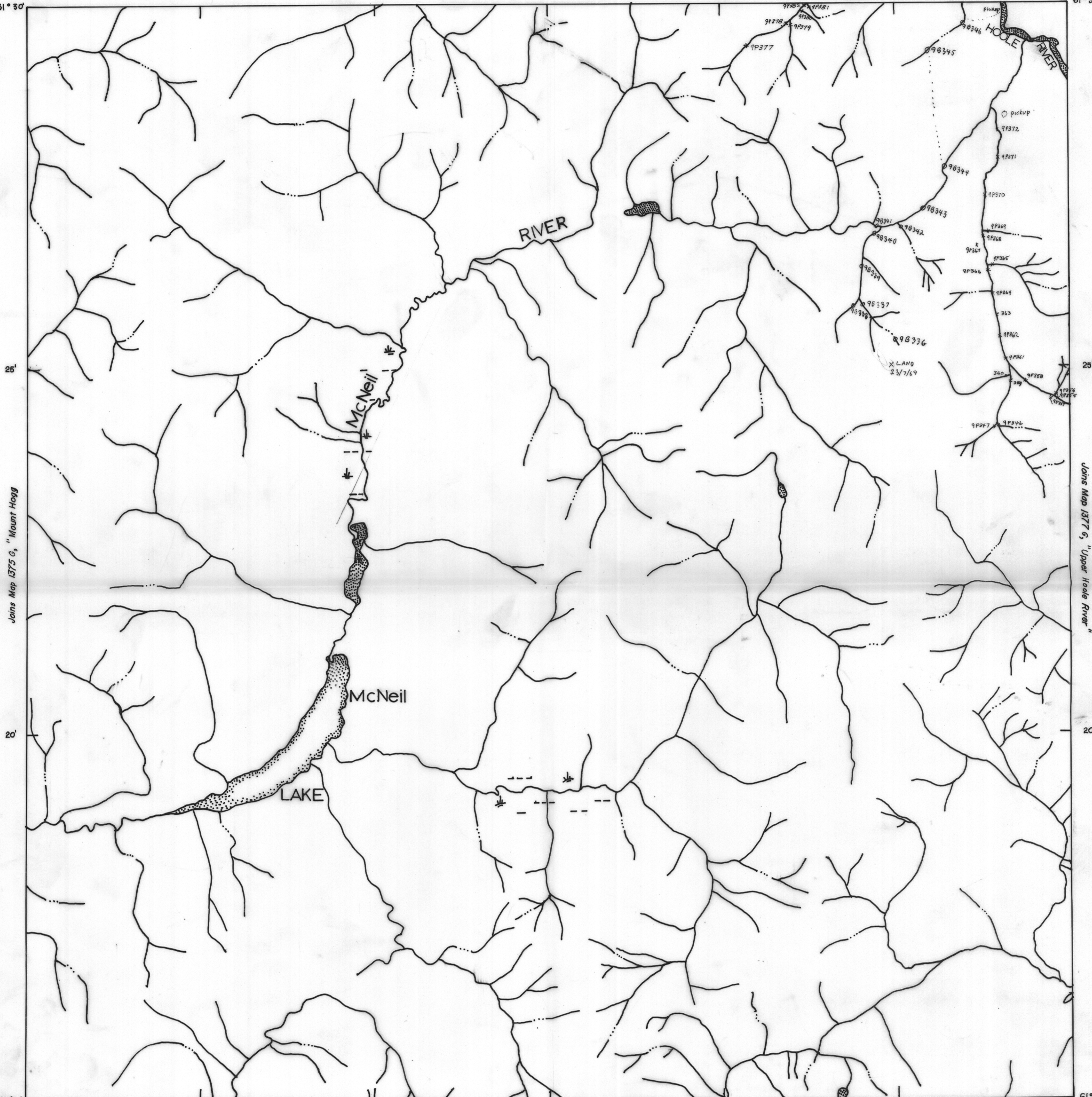
35,235,36,331 → 17,460,42,237
26,181,16,175 →
37,330,54,307 • 37,58,41,329
• 25,205,42,272
35,160,23,273 •
• 40,225,20,239

• 25,190,33,263
• 35,174,24,234
• 35,163,23,276
• 43,194,24,297
• 37,187,21,335
36,150,20,327 • 40,168,33,286
• 37,146,36,345
• 20,240,24,422
• 52,165,28,300 •
70,205,25,310 •
NO
SAMPLES •
• 52,142,34,284 •
• 40,186,31,249
• 40,200,30,313
• 35,205,28,323
• 37,214,32,357
40,220,33,355 • 35,162,31,248
37,146,36,345 • 23,82,38,255
• 25,183,27,345 •
25,47,22,212
37,370,42,313 • 33,365,33,279



105 G
5

U13961

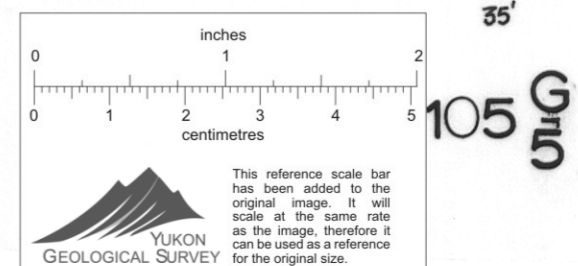


Joins Map 13756, "Mount Hogg"

Joins Map 13776, "Upper Hoole River"

GEOCHEMISTRY 1/2 0 1 2 3

McNeil Lake



105 G 5th