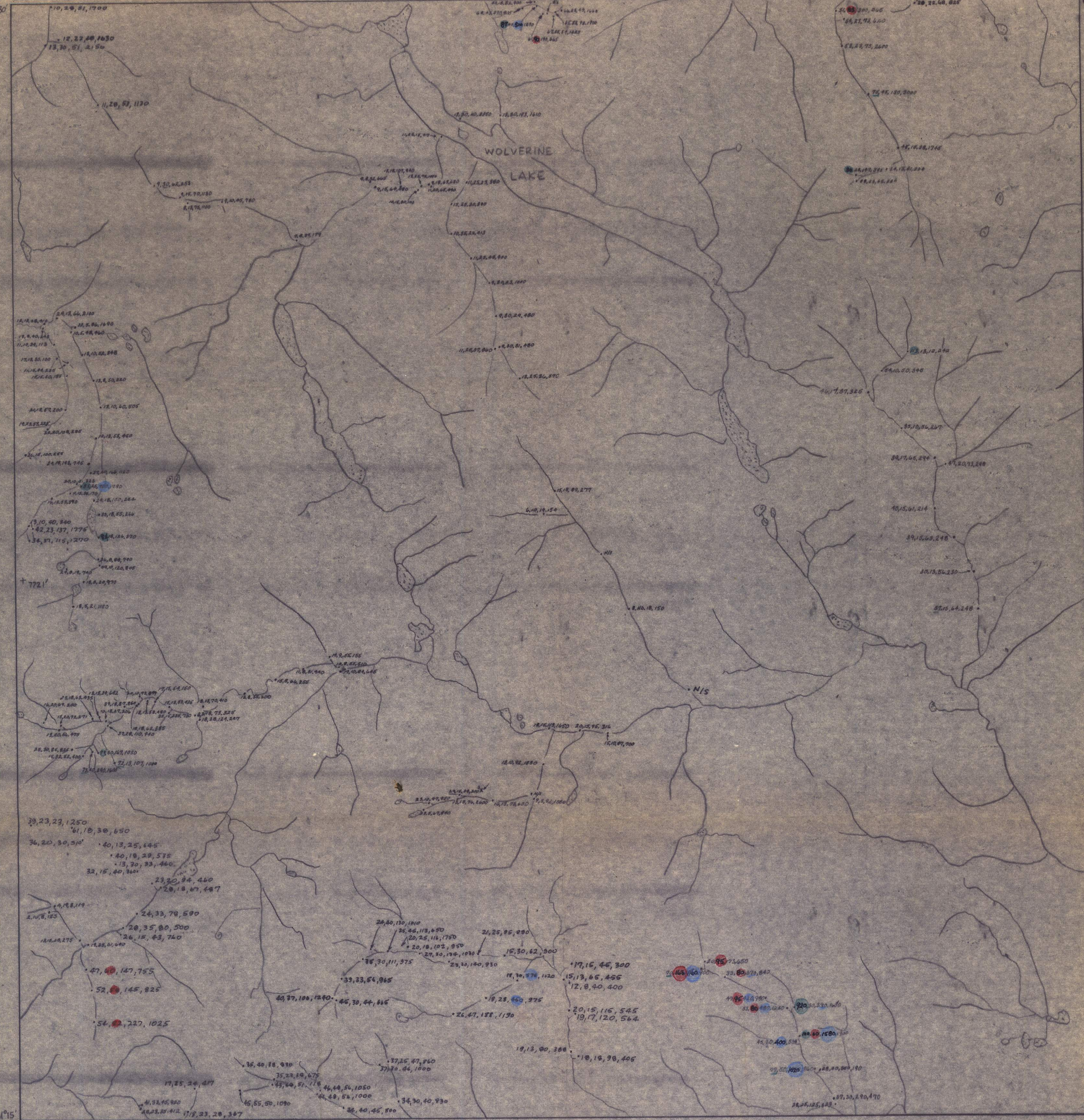


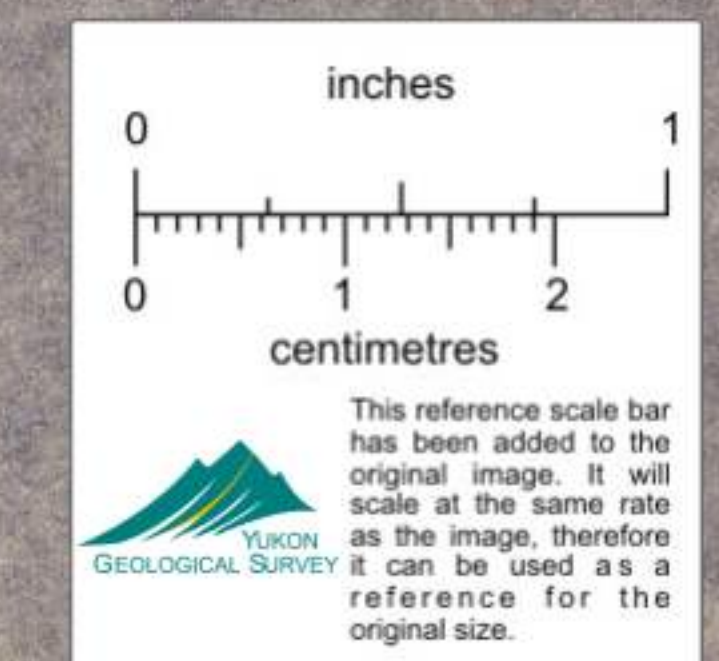
130°30' 61°30' 130°00' 61°30'



- Cu • 80-120 ppm, • 120-200 ppm, • > 200 ppm
- Pb • 60-90 ppm, • 90-150 ppm, • > 150 ppm
- Zn • 400-600 ppm, • 600-1000 ppm, • > 1000 ppm

WOLVERINE LAKE

Cu, Pb, Zn, Mn



014027

105 G 8