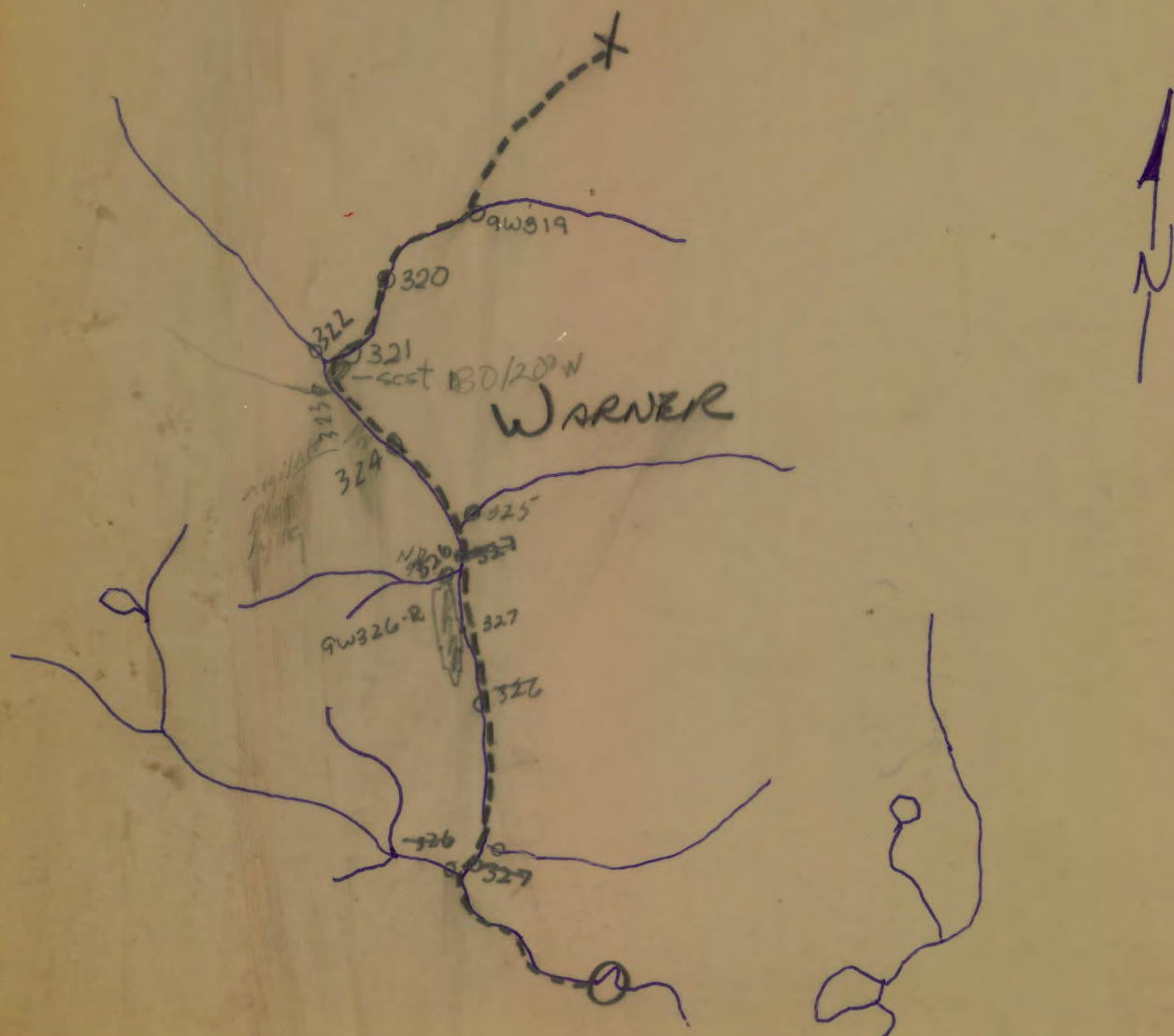


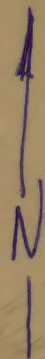
15609

July 24/69



014032

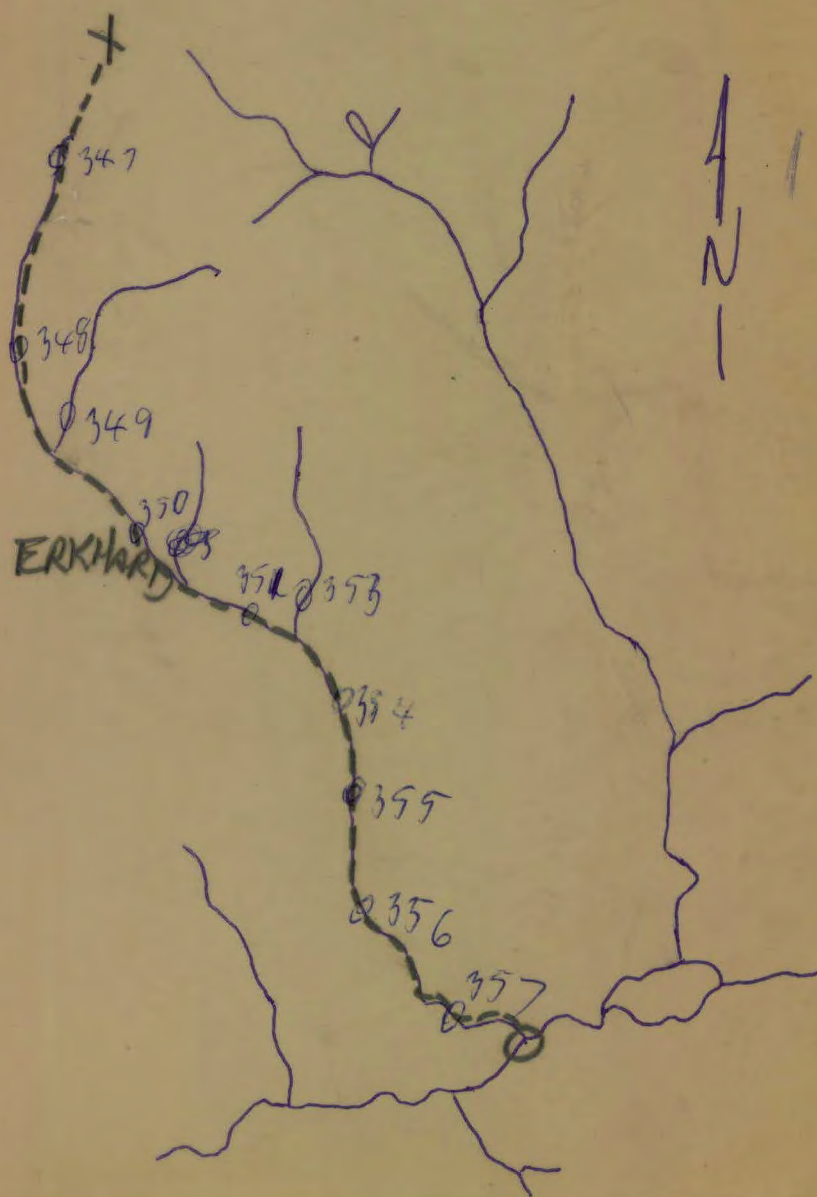
105609



105 G09

61°45'

130°



# FINLAYSON REGION

Plotted  
Cross ✓

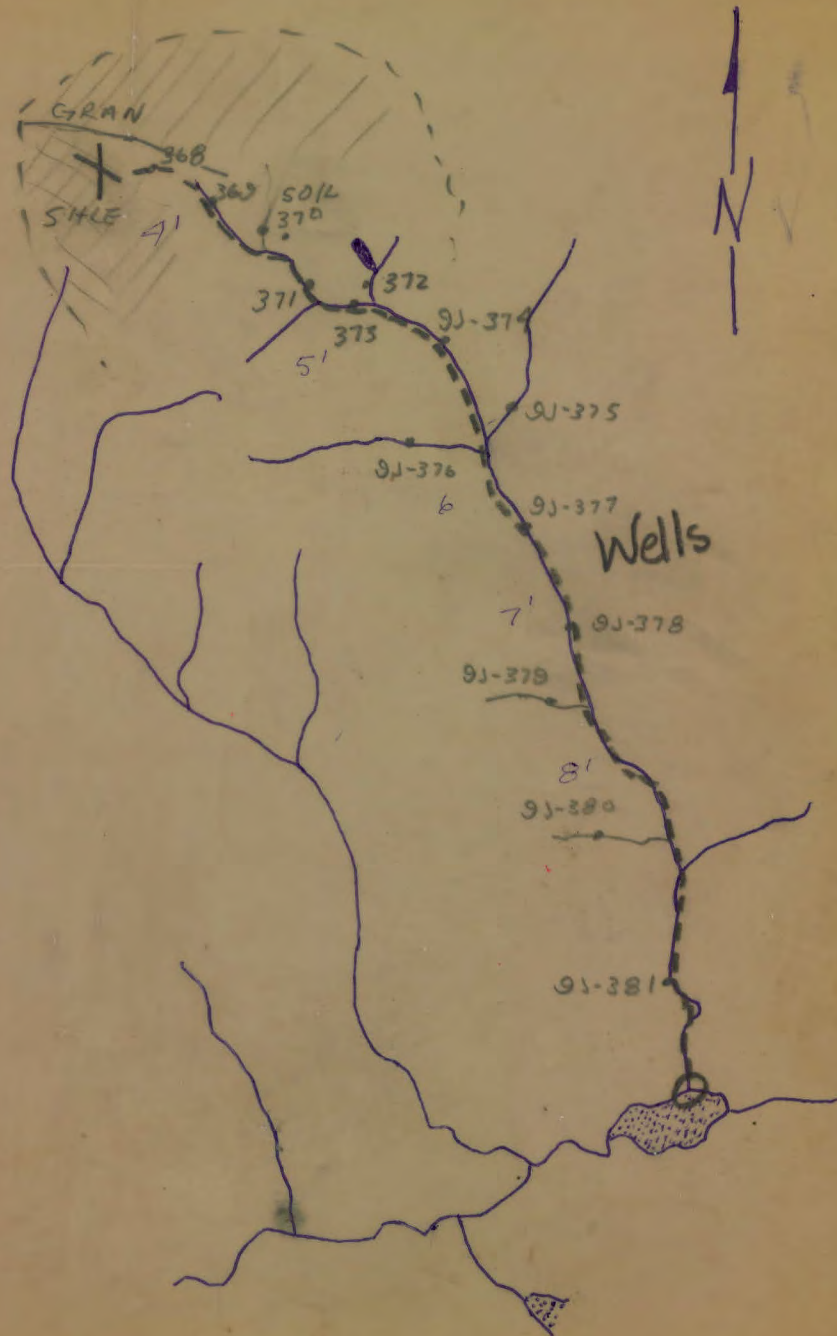
105G09

61°45'

130°00'

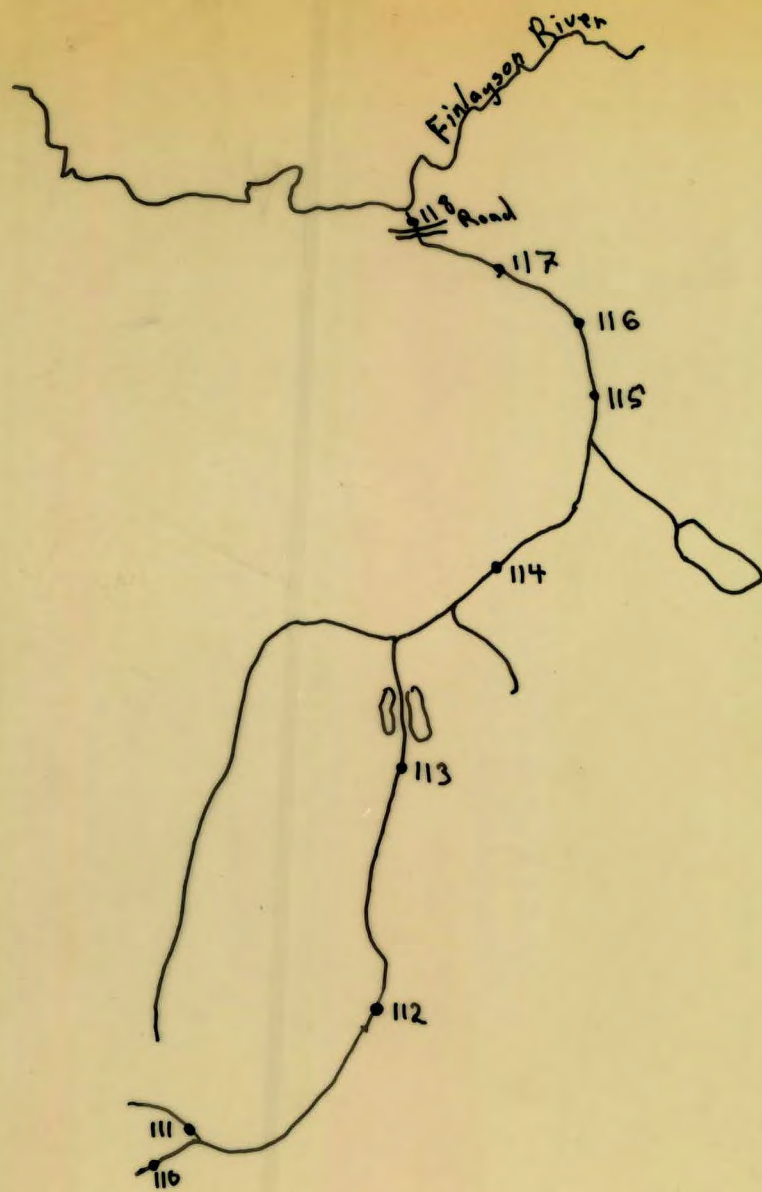
## MINERALIZATION

- MOLYBDENUM
  - PYRITE
  - CH. PY.
  - PYRITITE
  - TUNGSTON
  - Ag?
- IN GRAN + CONTACT  
SHALES (GRAPHIC)  
- LMSN



RAYWELLS  
SCALE 1" = 1 MI

JULY 29, 1969



Neil S. Glass

105 G/9

A

Neil Glass

105 G/9

1 in = 1 mile

